



Rapporto del Servizio di Elettronica 2014/2015

Componenti del Servizio di Elettronica, come da foglio presenze:

- Paolo Musico (responsabile)
- Massimo Cariello
- Massimiliano Cresta
- Giuseppe Mini'
- Saverio Minutoli → dal 1 settembre 2015 part time al 30 %
- Fabio Pratolongo

Principali attività' (in ordine sparso) sulle seguenti sigle:

- Jlab12
- Borexino/Darkside
- Lhcb
- Totem
- KM3Net
- Topem
- INFN-E



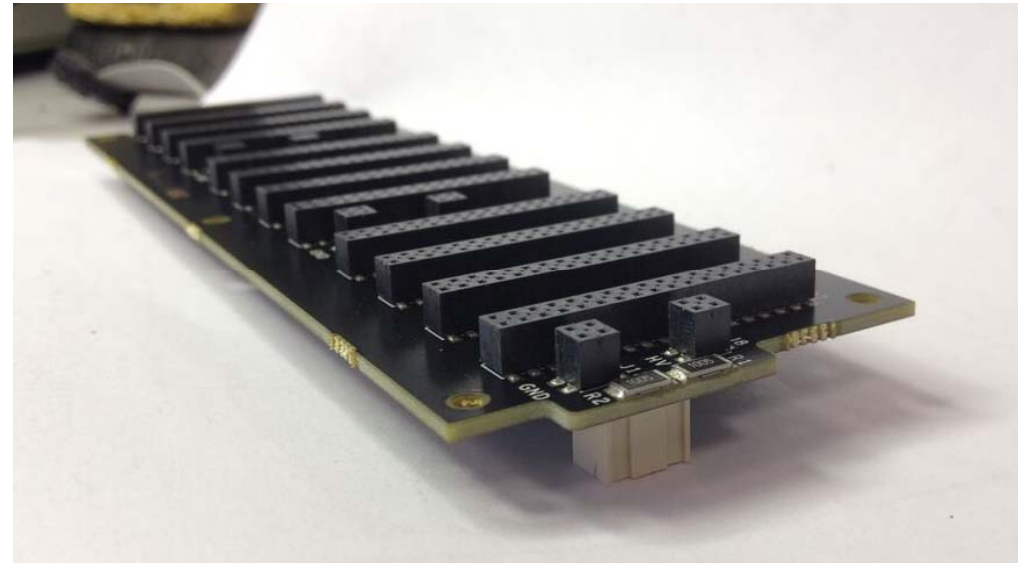
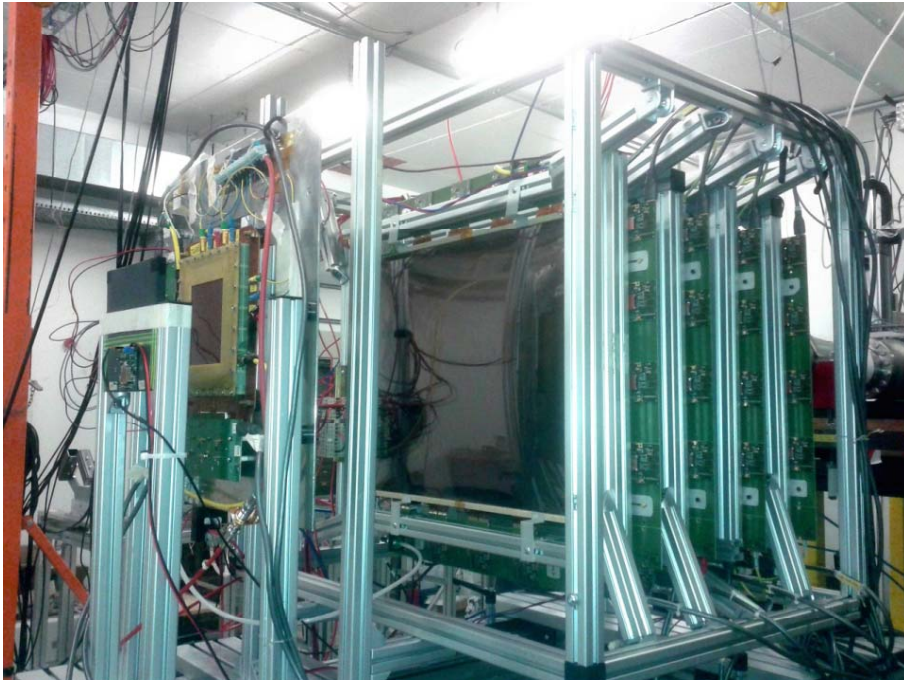
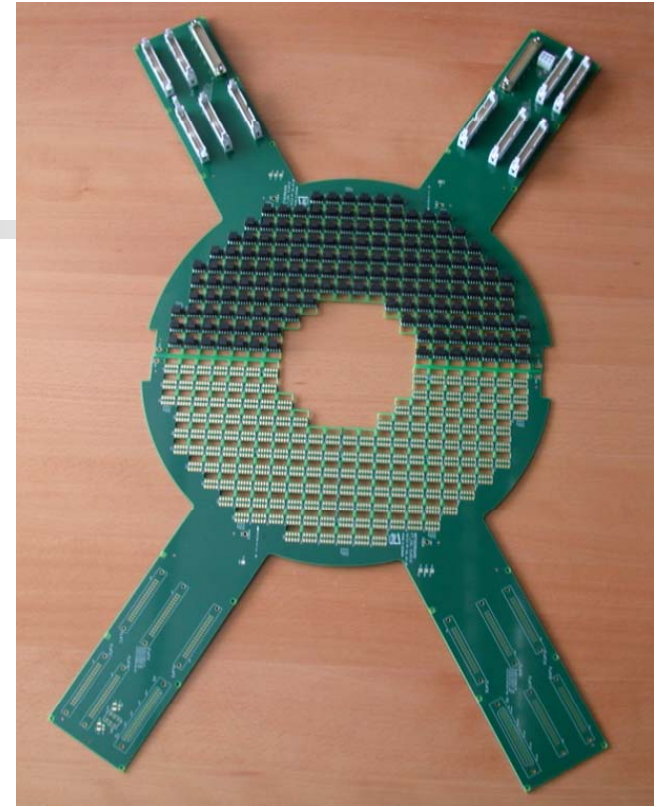
Jlab12 et similia

GEM readout

Forward tagger (Ft-cal, Ft-hodo),
HPS, BDX, Clas-Med

AstrO

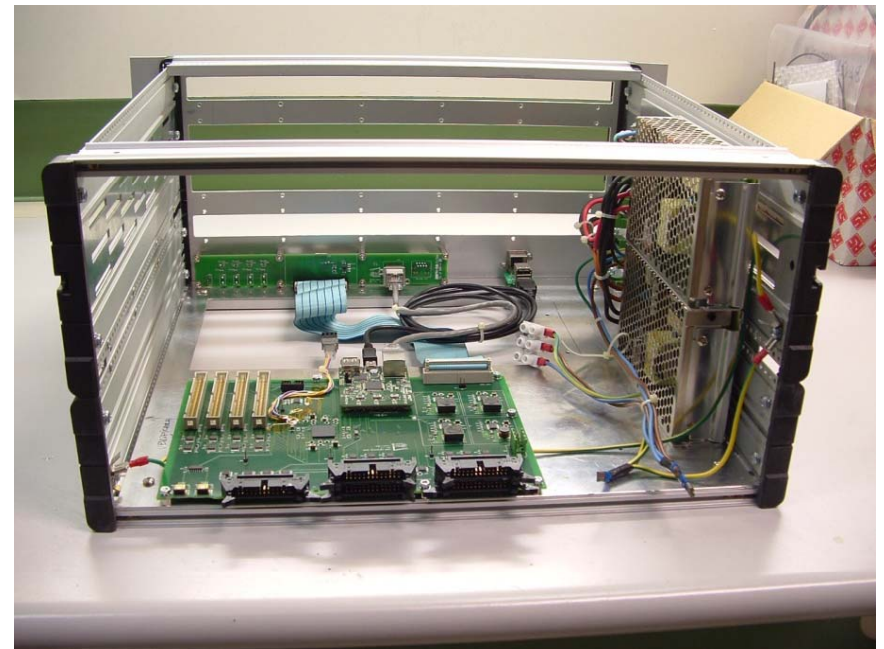
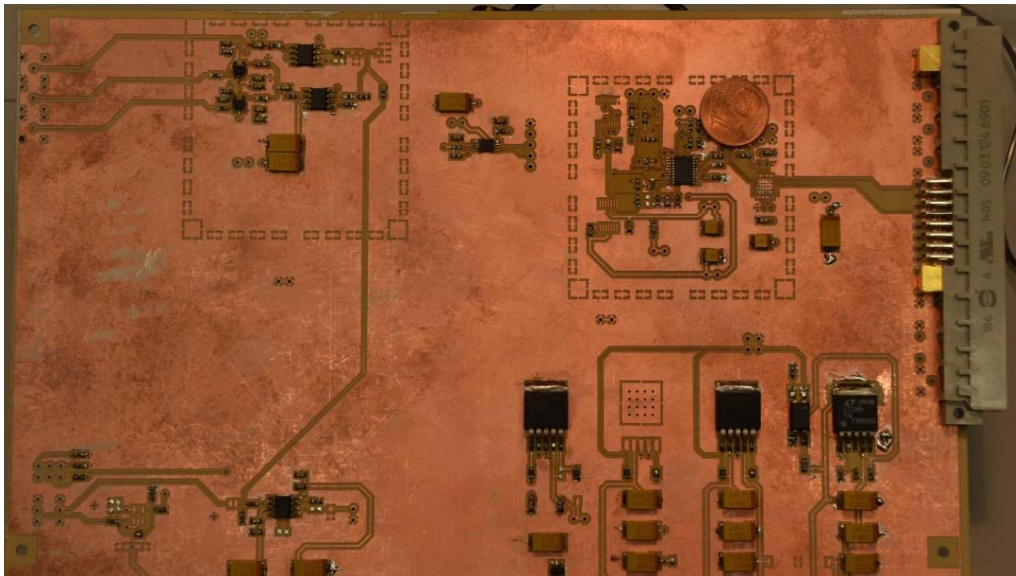
Scintilla





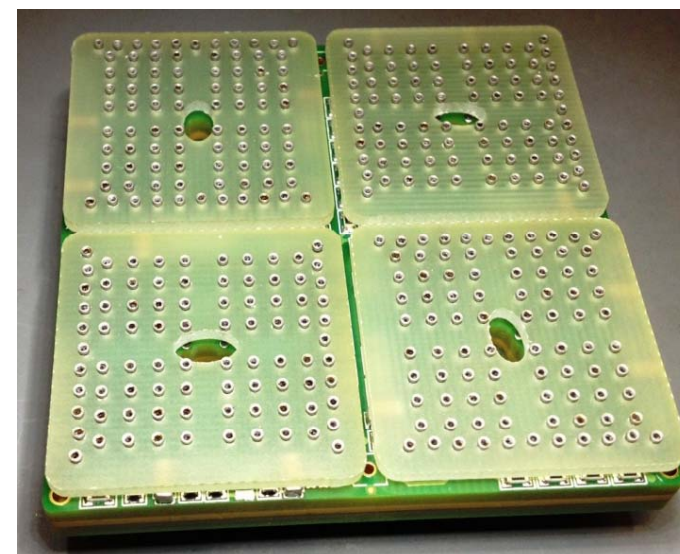
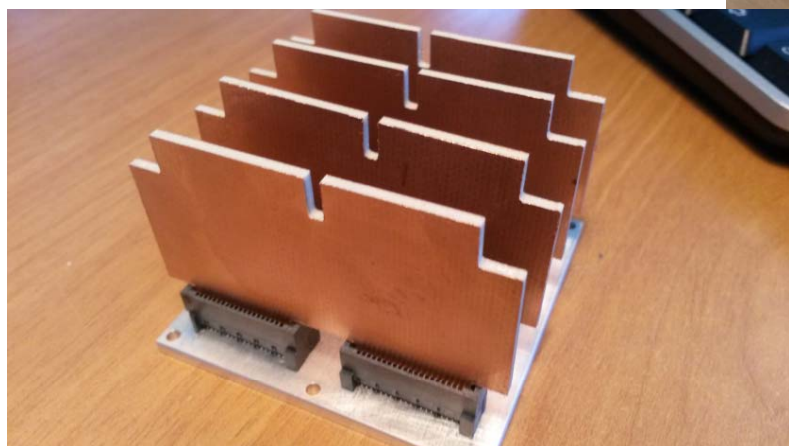
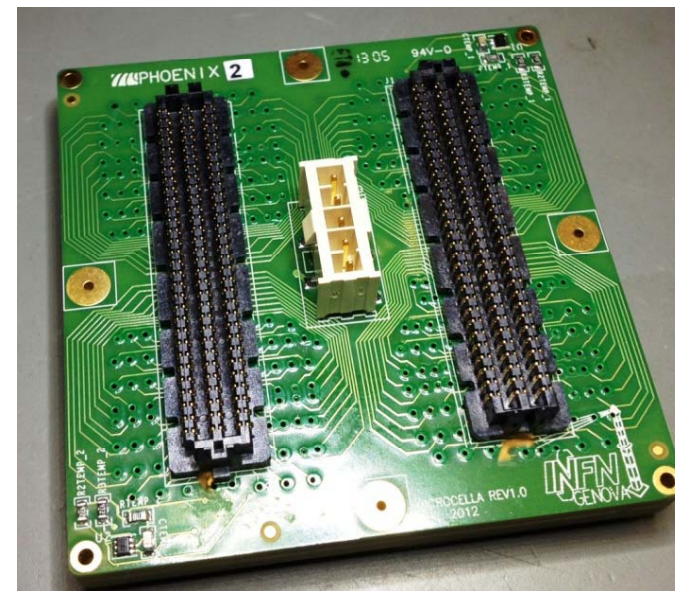
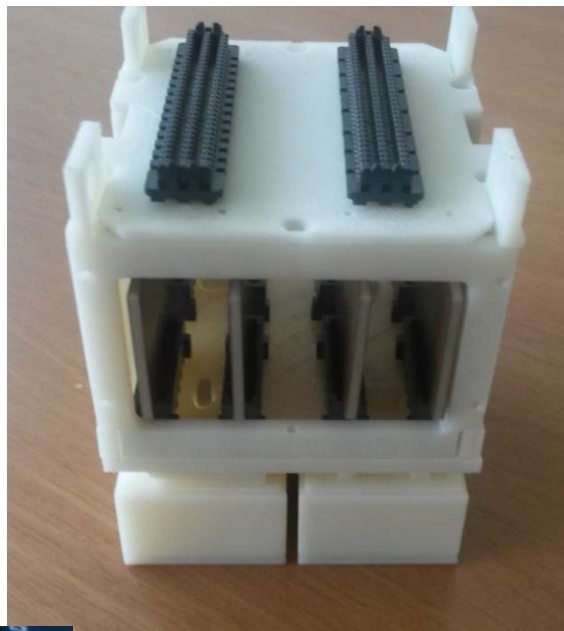
Borexino/Darkside

Nuovo front-end per PMT per Darkside
Studio nuovo sistema per Borexino

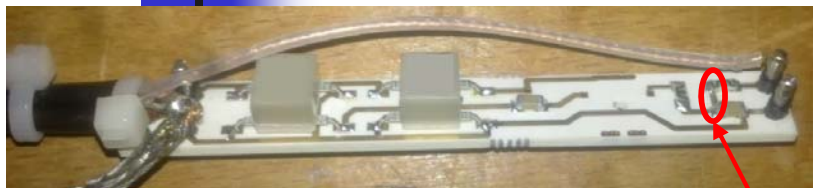


LHCb

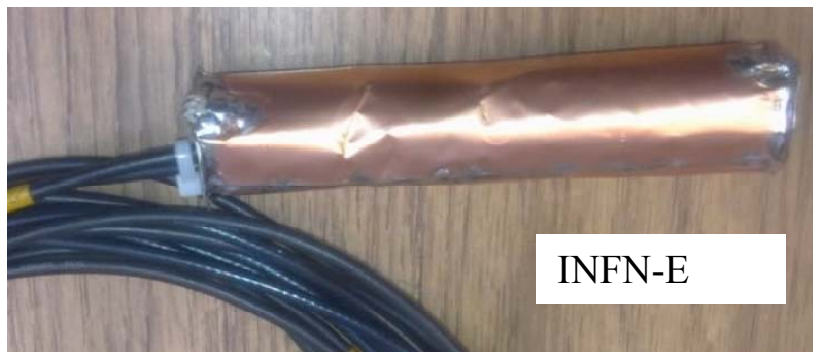
Microcella 4 MAPMT
Microcella 1 MAPMT
Mockup meccanici



INFN-E & LHCb



Front-End Diamond Mono

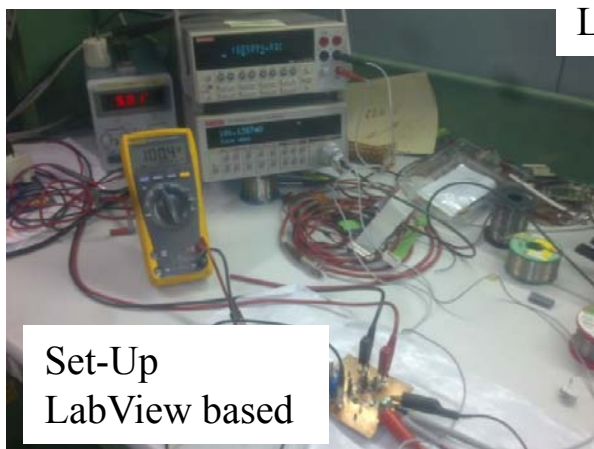
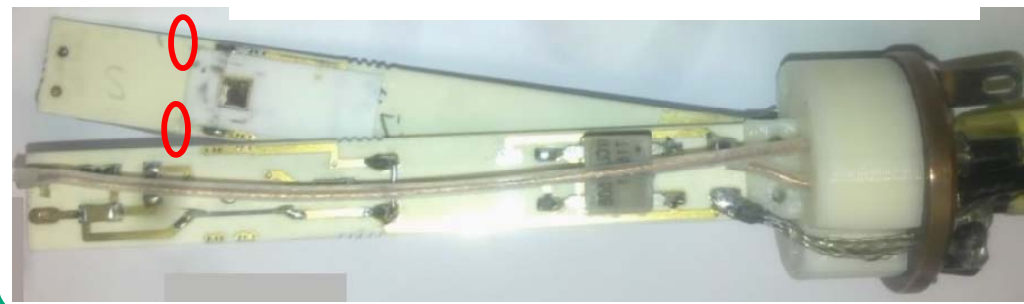


INFN-E



INFN-E

Front-End Diamond Sandwich



Set-Up
LabView based

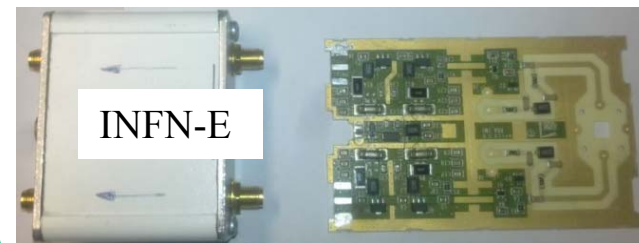
LHCb



Precision Low Side I Source
 μ Ohmetro 4
wires technique



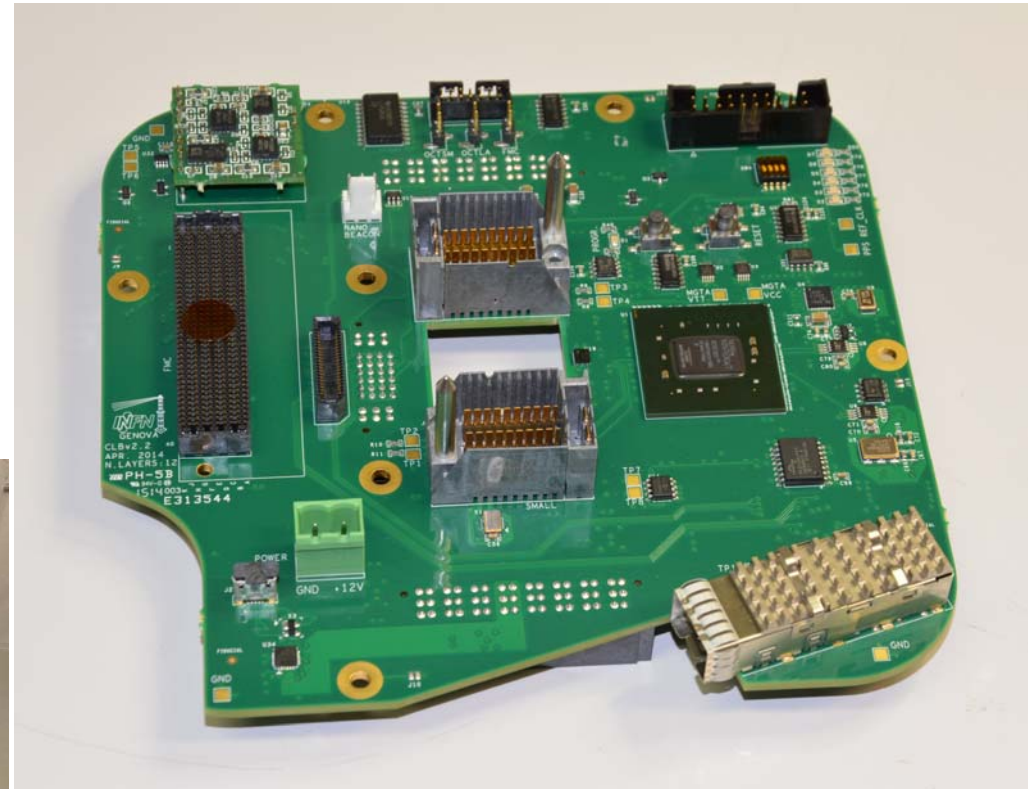
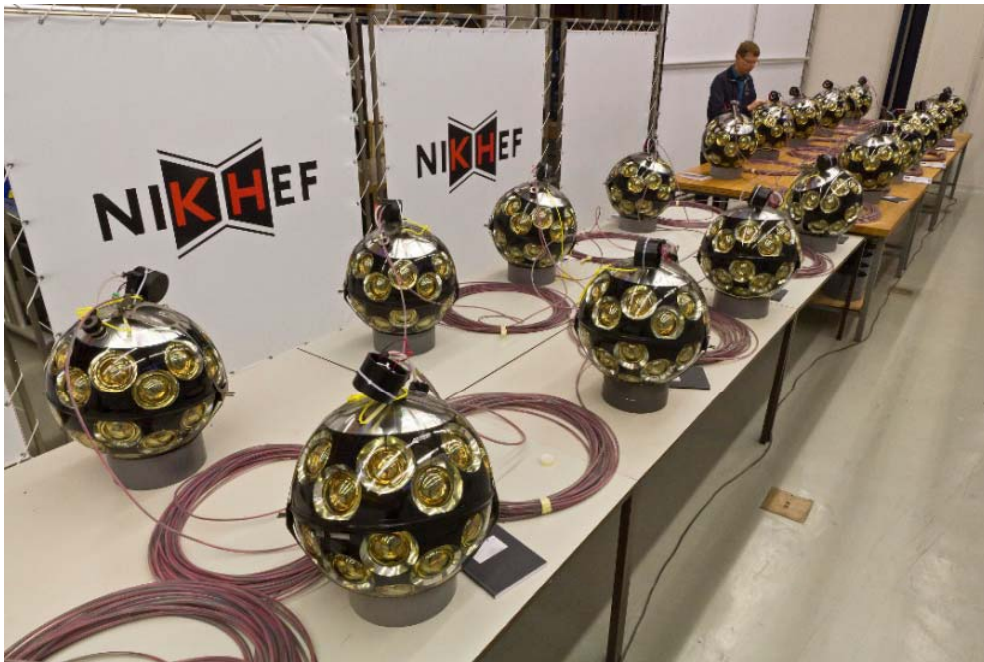
Diamond Low Noise Fast Preamp

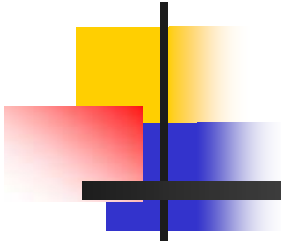


INFN-E

KM3NeT

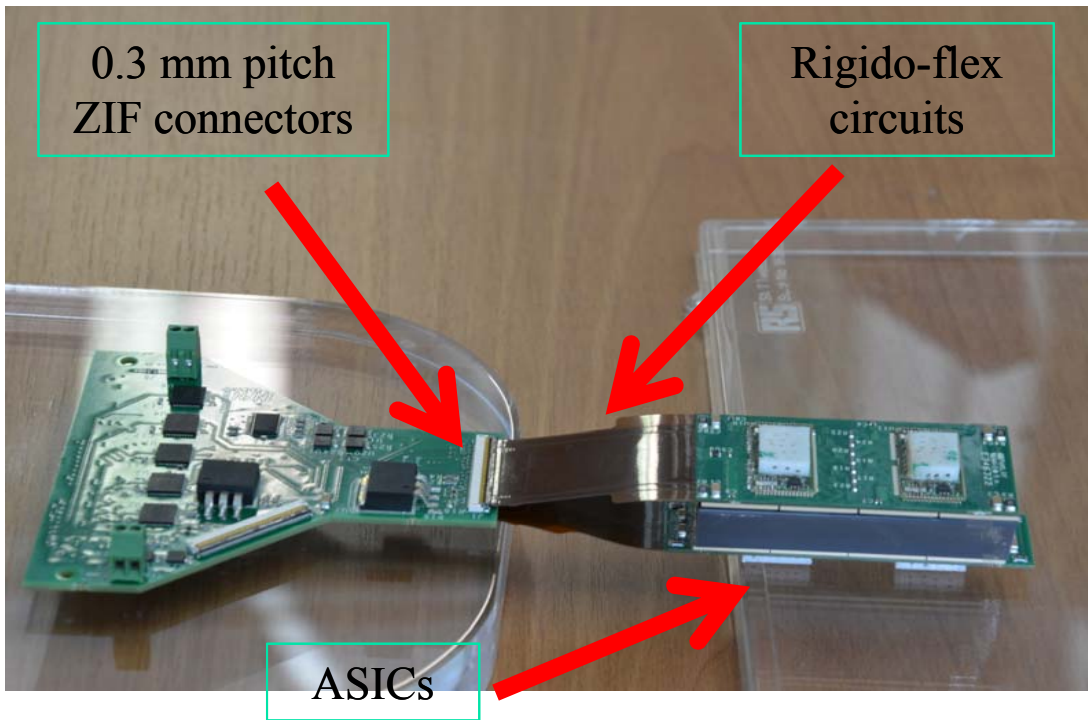
Progetto e prototipazione CLB
Gestione produzione (600 pezzi)
Gestione qualità'





TOPEM

Prototipo probe endo-rettale per PET dedicata



Nuova fresa per PCB

Installata in Febbraio 2015
Sostituzione della precedente
(\approx 1995)

Lavori fatti finora:

- n. 6 per MEG
- n. 5 per AEGIS
- n. 3 per Darkside/Borexino
- n. 3 per Clas12
- n. 1 per il Servizio
- n. 1 per Fontanelli R&D

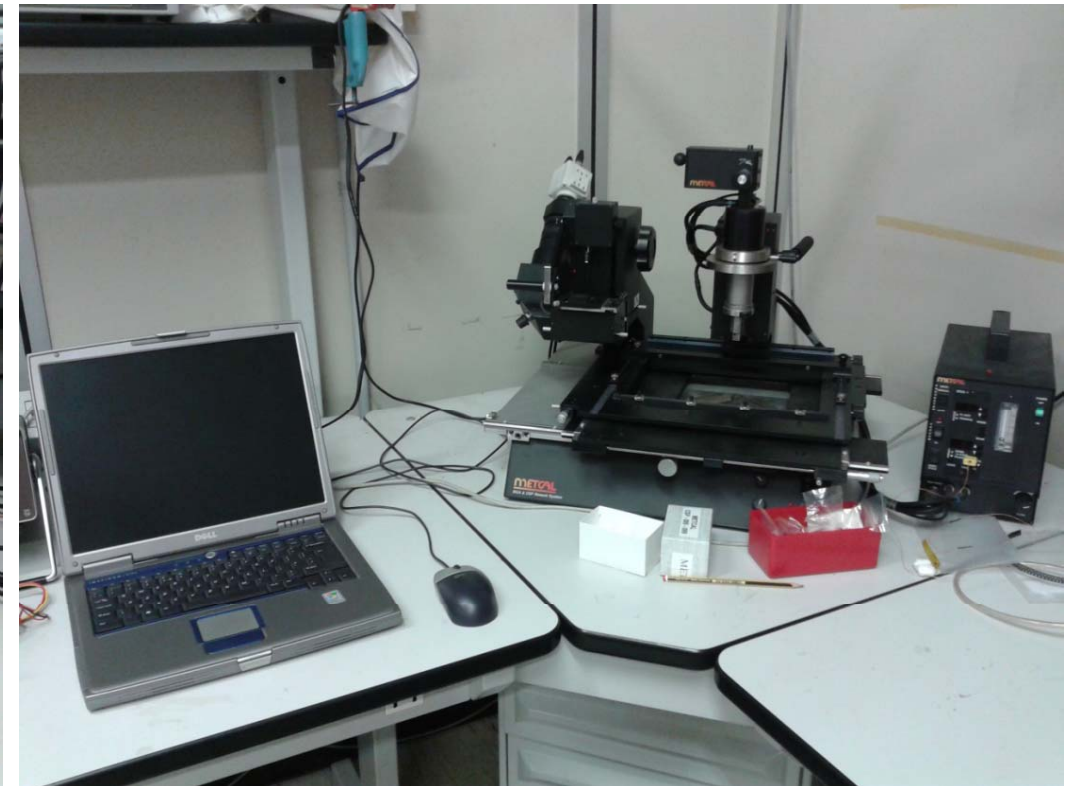
Totale: 79 PCB



Altre attrezzature di laboratorio elettronico

Microscopio ottico per analisi PCB

Sistema ad aria calda per rilavorazione IC complessi (fine pitch, BGA)



Richieste finanziarie per il 2015

Manutenzione software CAD elettronico: 5000 Euro

Acquisto alimentatore HV 4 canali (CAEN DT1470ET): 5600 Euro

Acquisto sistema di visione per ispezione e rilavorazione PCB
(Leica DMS300): 4900 Euro

Software aggiuntivo per Leica DMS300,
completo di PC dedicato: 2800 Euro

Materiale di consumo (metabolismo): 10000 Euro

