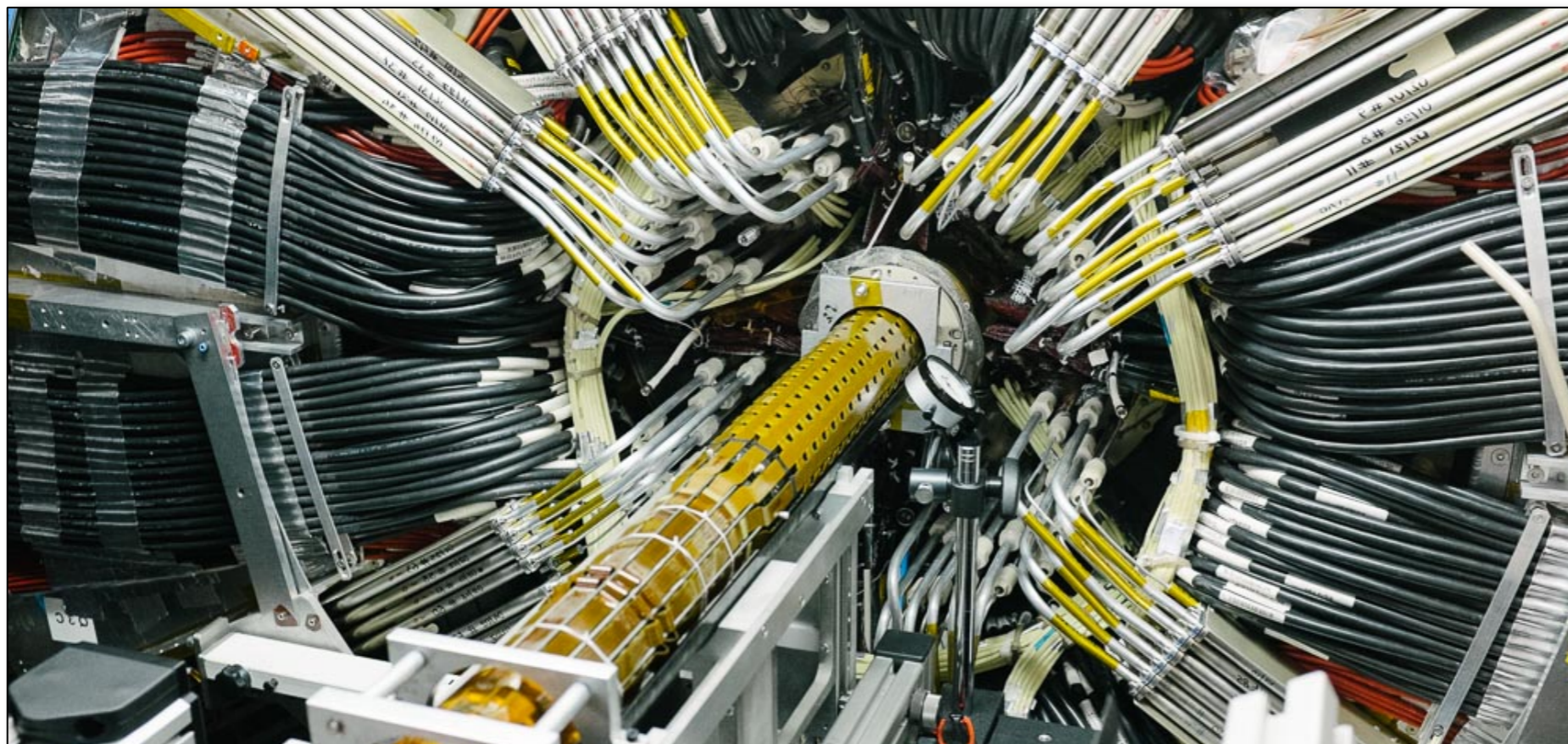
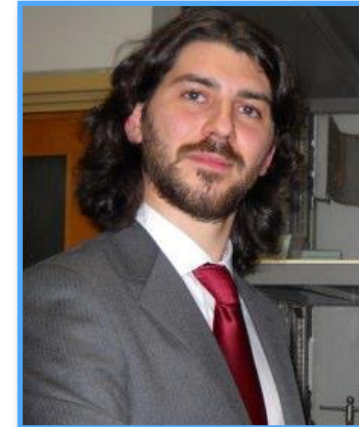


- Insertable B-layer, inserted in May 2014 in ATLAS
 - IBL is sitting at 33mm from the beam line
 - 14 staves, full azimuthal hermeticity
 - IBL is ready for the second run of ATLAS data-taking starting in June 2015
- During the IBL production some issue has been addressed and solved



- Issues met and solved during the IBL project
 - Wire-bonds oscillations in Magnetic fields
 - ▶ fixed frequency trigger veto implemented in DAQ
 - Wire-bonds corrosion
 - ▶ revision of the quality assurance setups
 - Failure in bump bonding procedure
 - ▶ change of the solder flux
 - Poor yield in the modules production
 - ▶ Implementation of IV measurements at the probe station

