

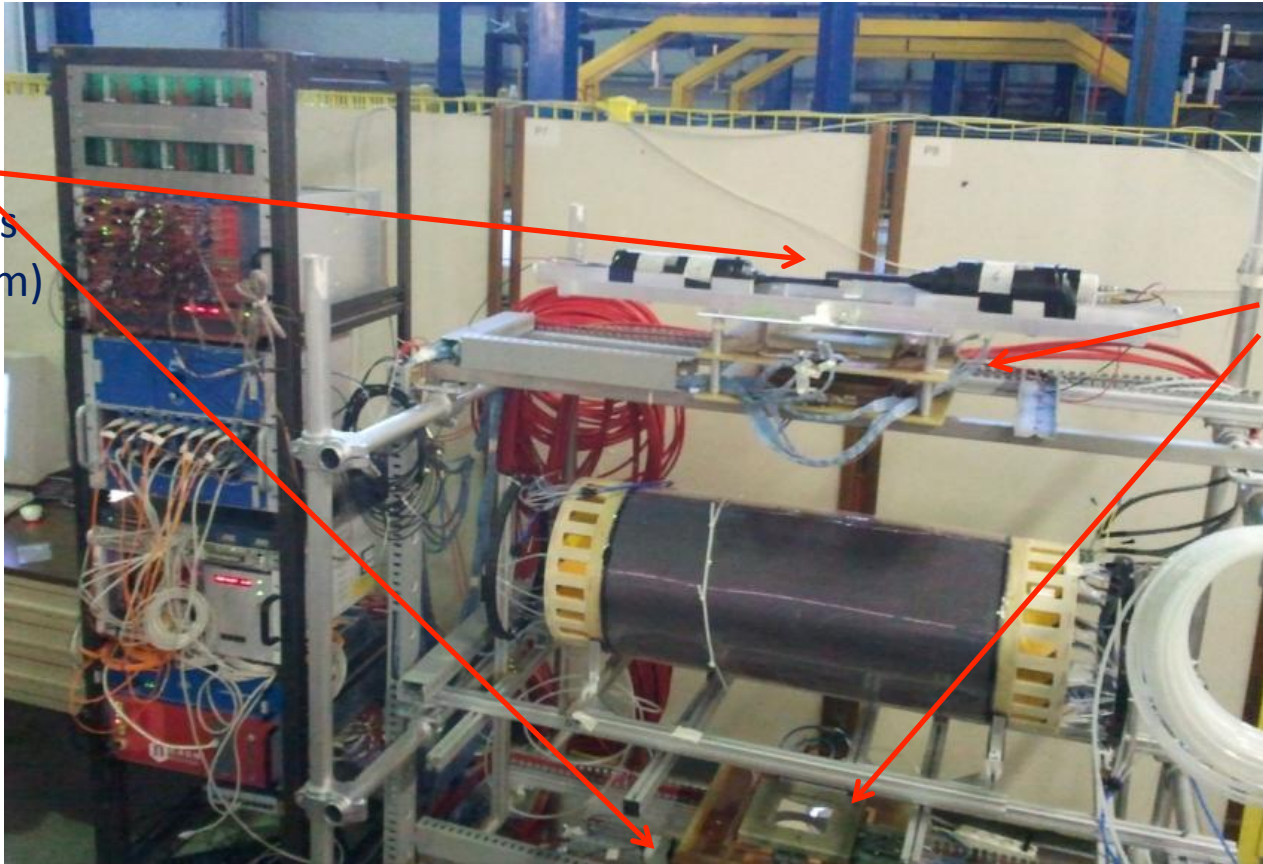
Status of CGEM project

G.Bencivenni

on behalf of IT-subgroup

Detector test: cosmic ray stand

- detectors instrumented with: final HV cables and distribution
final Gastone FEE and signal cables



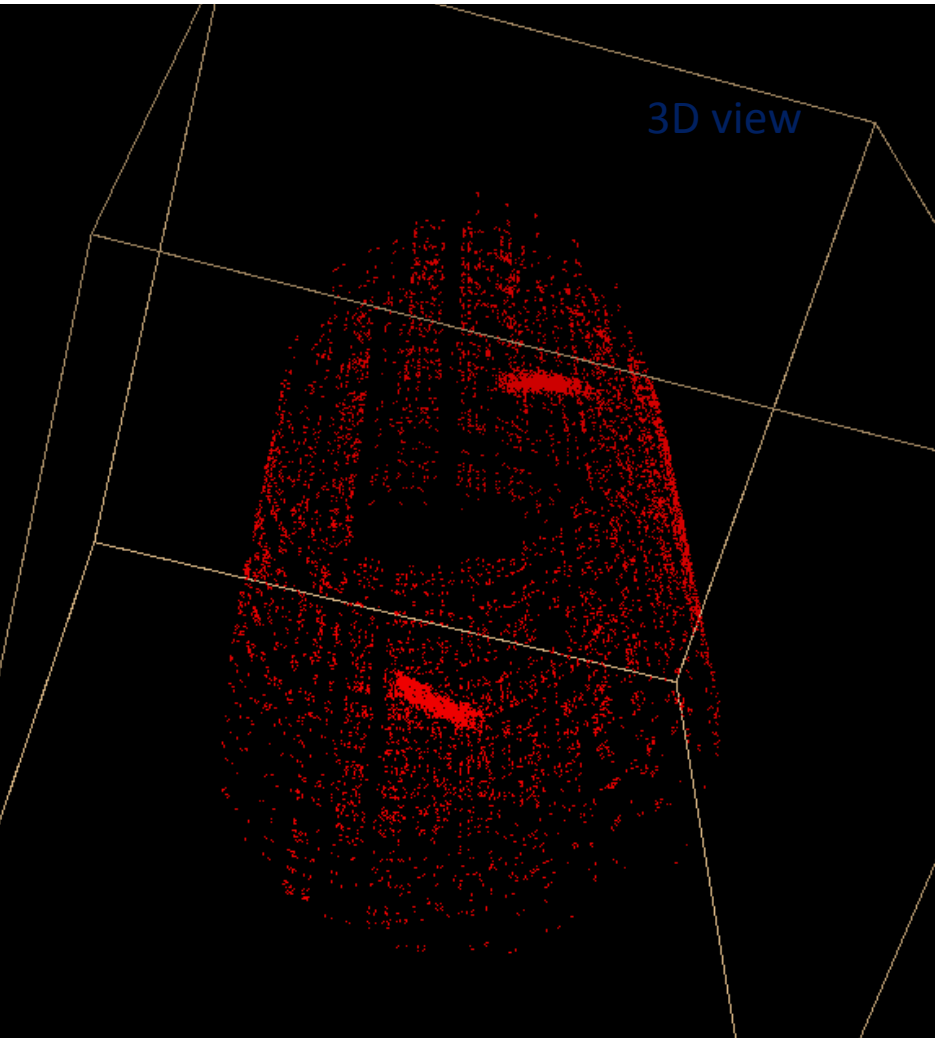
Trigger:
2 scintillators
(Top - Bottom)

External Tracking
System provided by
three small
Planar GEMs
PGEMs
(1Top - 2 Bottom)

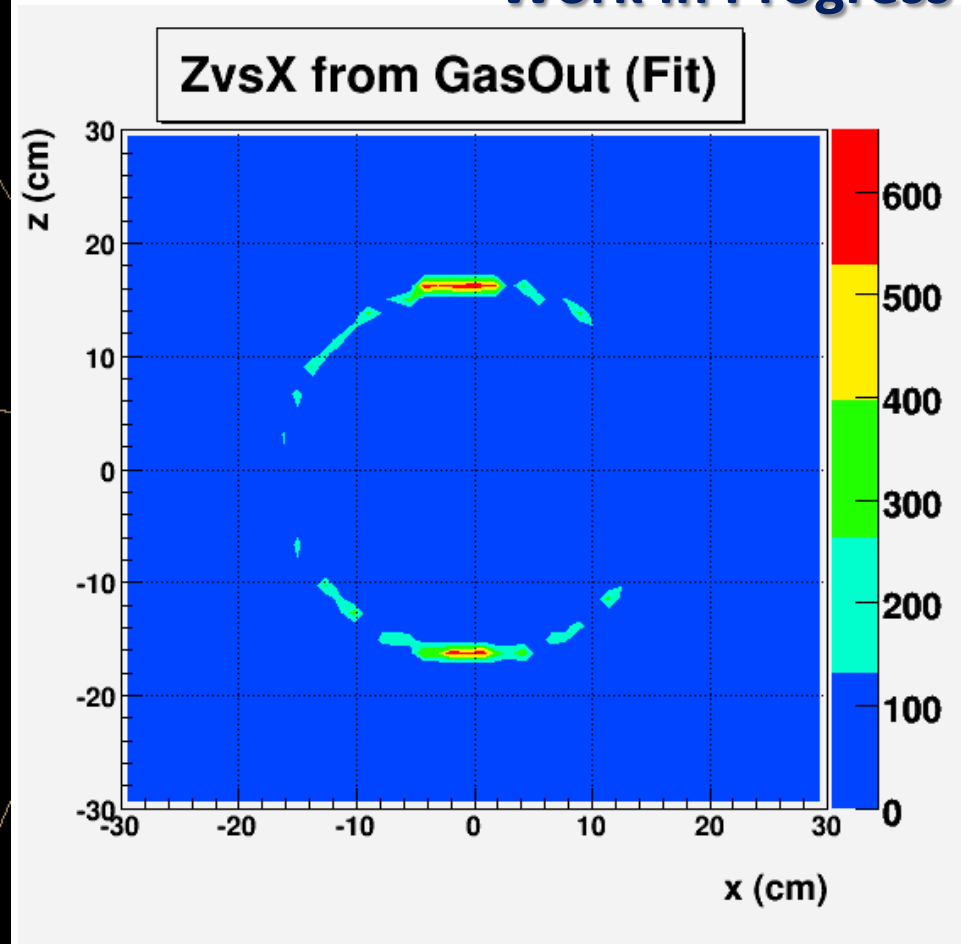
- The DAQ System uses the Final custom Global Interface Boards (GIB) and Transition Boards (TB)

Validation with cosmic-ray muons

- Selecting events using External Tracking provided by 3 Planar Triple-GEM



Work In Progress



IT Detector Construction Status

Layer2

- Built and sealed
- Tested with source
- Equipped with GASTONE-FEE
- Equipped with Blocking-Capacitor
- Tested with cosmic-ray muons

Layer1

- Built and sealed
- Tested with source in Current Mode
- Equipped with Blocking-Capacitor

Layer3

- Built and sealed
- Spacer grid inserted
- Tested with source
- Equipped with Blocking-Capacitor
- Under Test with cosmic-ray muons



Layer4

- material delivery from CERN: Nov 2012
- construction completion : Jan 2013

Layers Integration

- Insertion L1/L2/L3 and test with cosmic-rays: Dec 2012
- Integration of detector w/beam pipe: Mar 2013