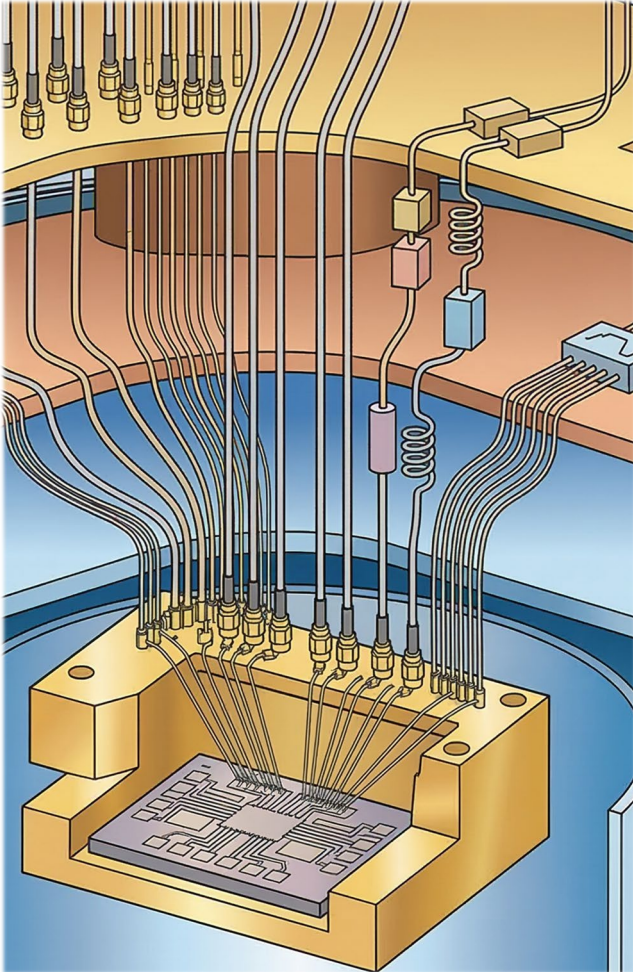


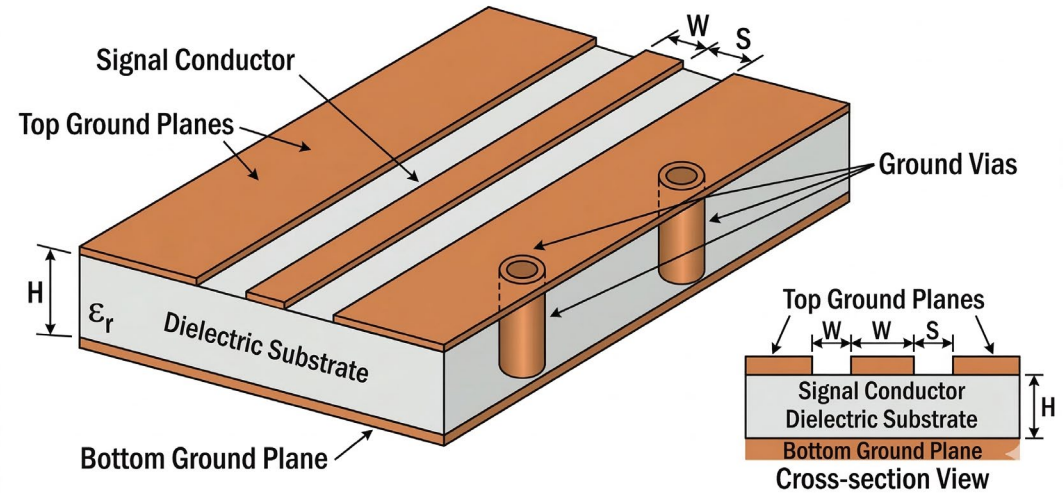
WP4 Packaging



Features/Requirements

- **RF Capabilities** 8 RF Lines up to 18 GHz
- **DC Capabilities** 20 DC Lines
- **Magnetic Shielding** Triple Al-Nb-High permittivity
- **Footprint:** Diameter 40 mm, Height 30 mm
- **Sample space** 10 x 10 mm²

Grounded Coplanar Waveguide (GCPW)



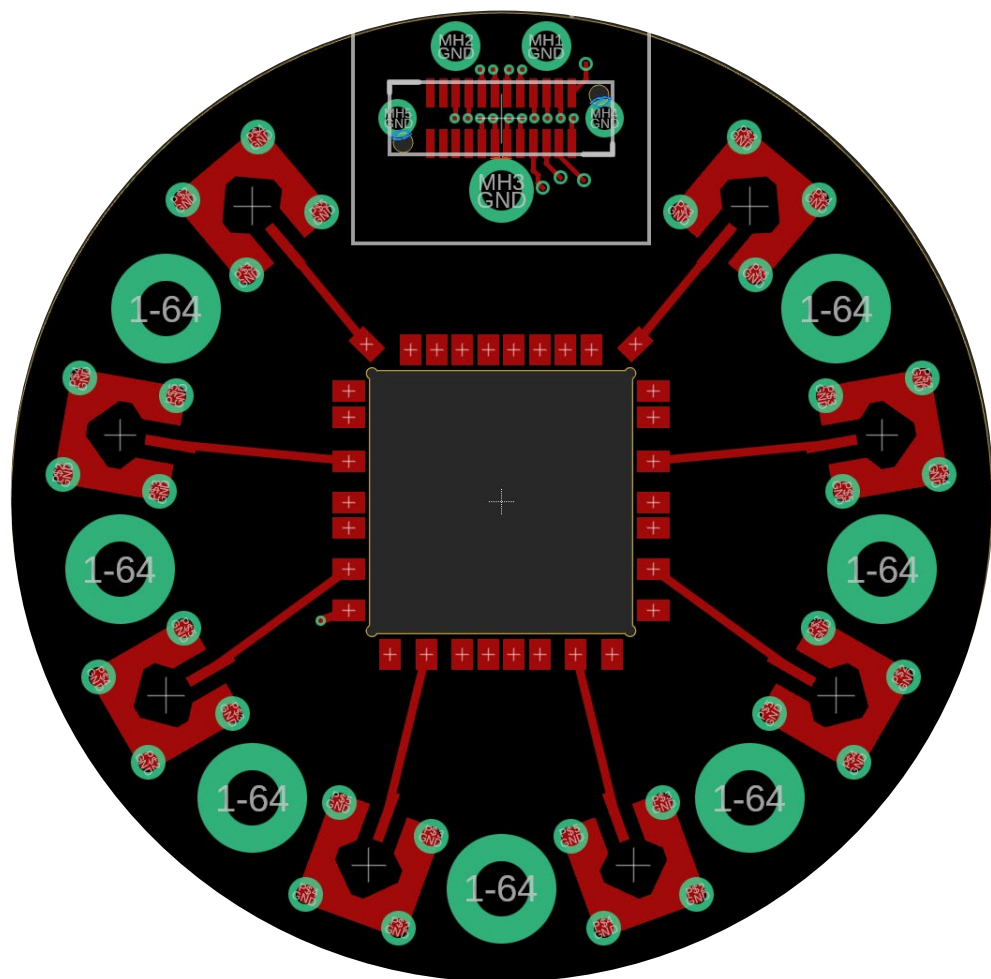
Multilayer structure



Design Specifications

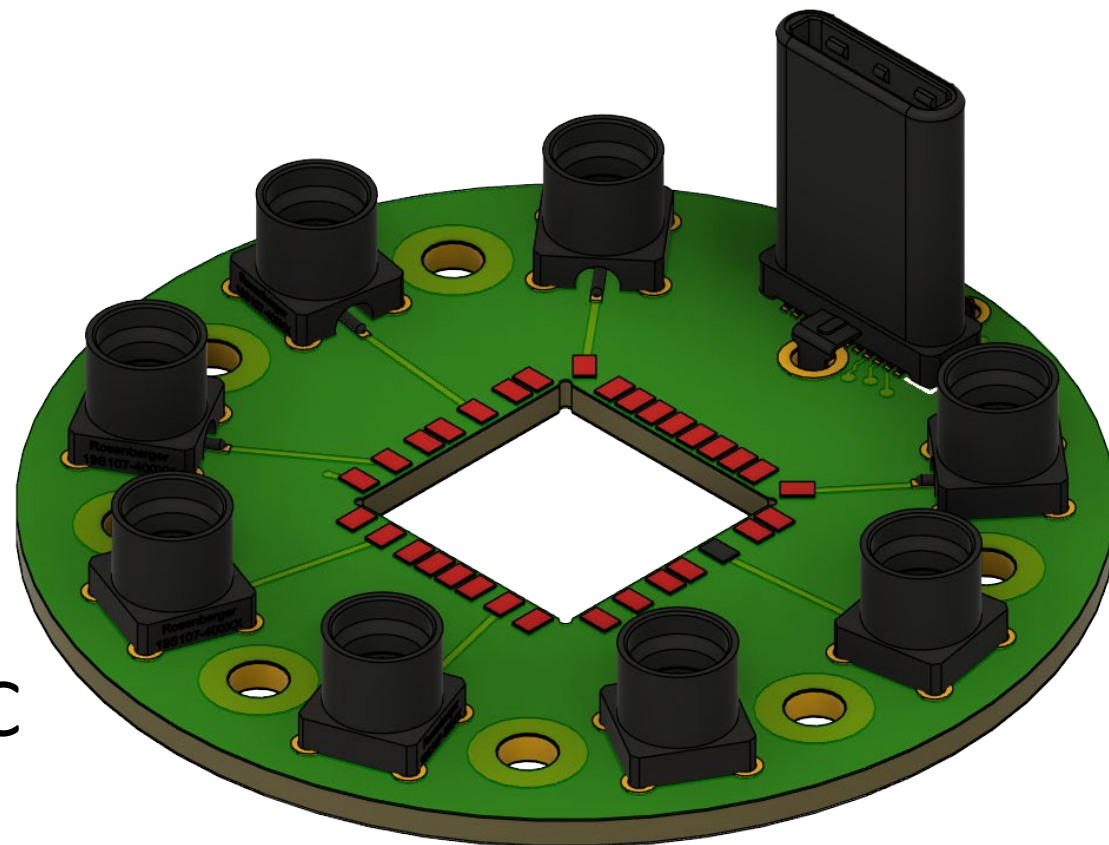
- Insertion loss: 0.5 dB
- Impedance: 50 +/- 2 Ohm

WP4 Packaging - PCB



8 SMP

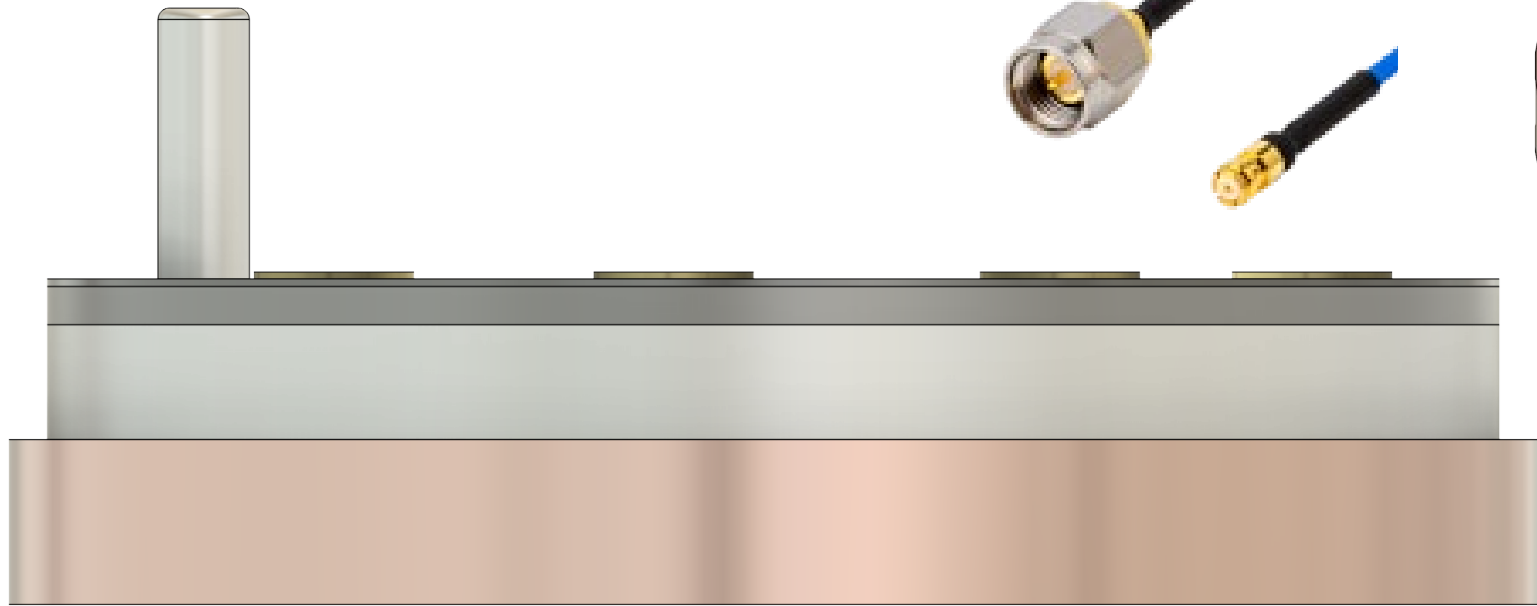
1 USB C



RF and DC
on all sides

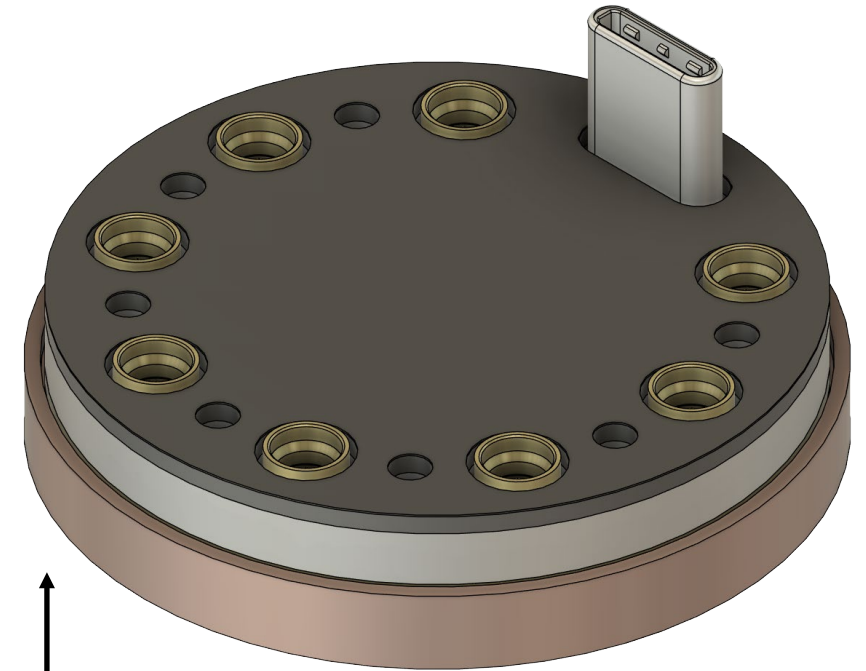
Packaging - Holder

Minicircuits - Hand-Flex
Interconnect

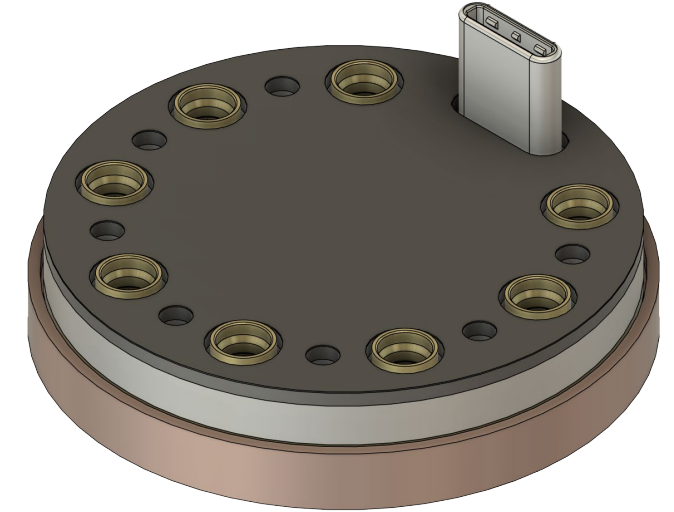
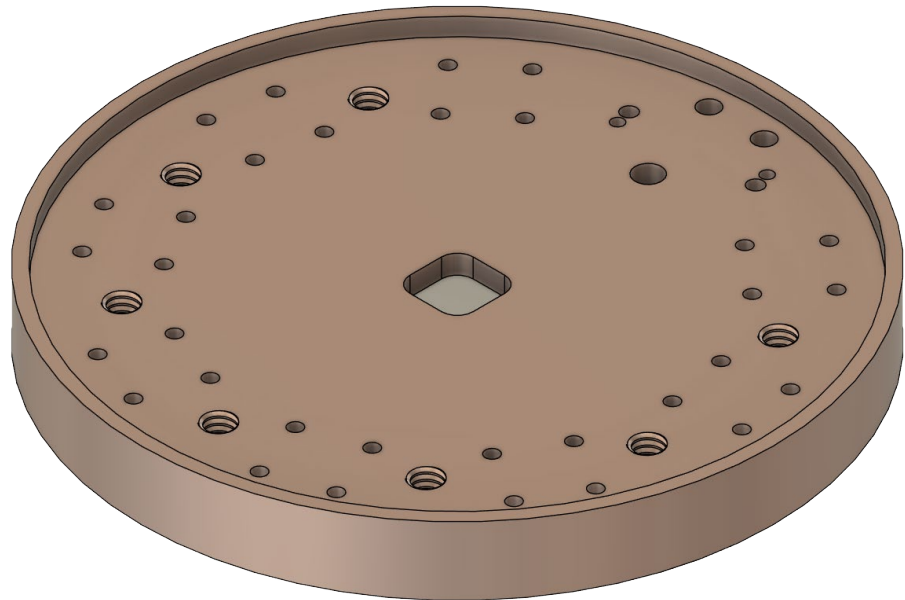


40 mm

8 mm



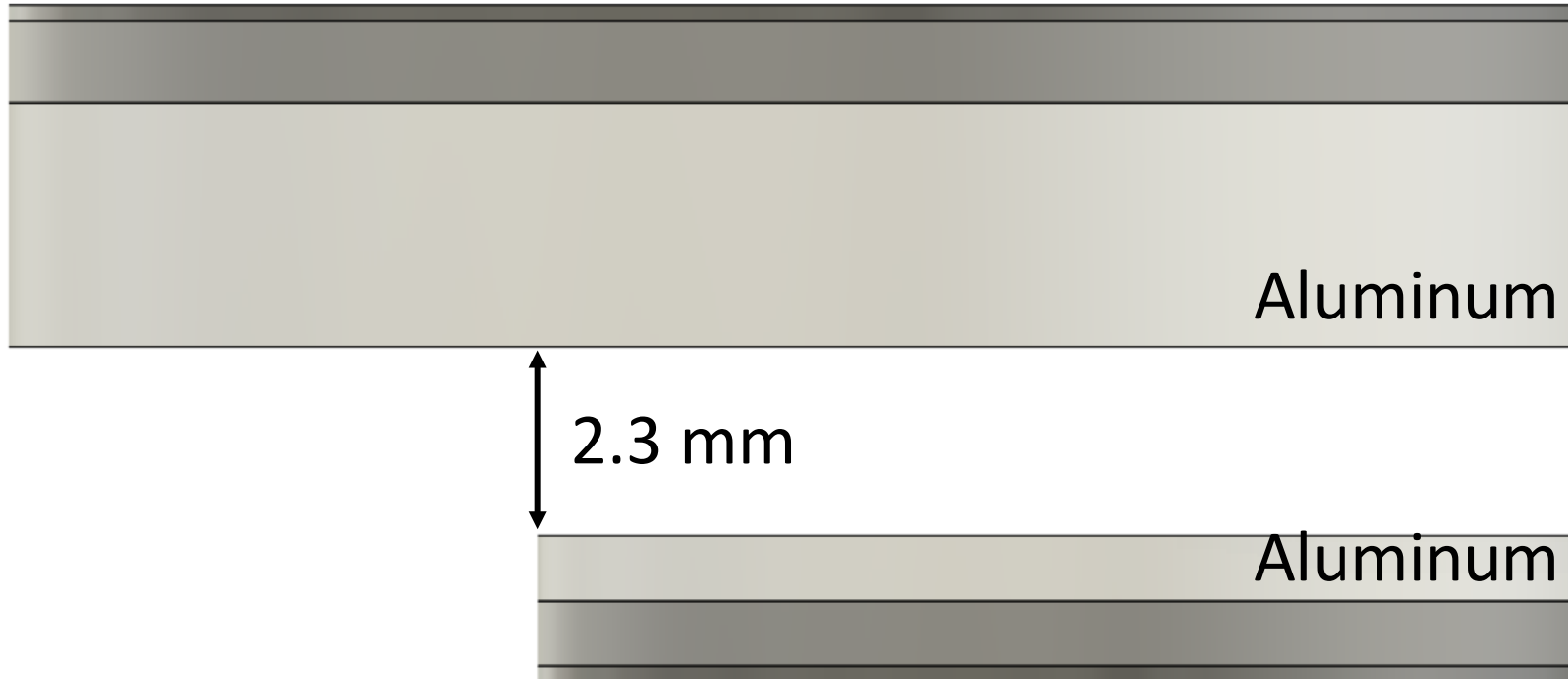
Monolithic Cu Base



- Cu CW004A (**Cu-ETP**) or **Cu OHFC**
- Integrated magnetic shield

Packaging – Mag. Shield

Metglas 2714A





Metglas 2714A

Niobium

*Target for a
Out-Of-Plane B
suppression?*

Niobium

WP4 Activity Status

- Sample Holder Design 
- Report on Electromagnetic simulations 
- Prototype fabrication **2-3 months**