

EuPRAXIA-DN Camp II: Science

14th-15th July, Lisbon, Portugal

Meeting Venue

Anfiteatro Abreu Faro
Instituto Superior Técnico (IST)
Av. Rovisco Pais 1
11049-001 Lisbon
Portugal

[Entrance to the site](#)



Overview of Activities

Sunday 13th July, IST (Anfiteatro Abreu Faro)

Welcome Reception from **18:00**

Monday 14th July, IST (Anfiteatro Abreu Faro, Cantinho do Avillez)

Registration from **8:30**

Camp Start **9:00**

Dinner at Cantinho do Avillez **19:00**

Tuesday 15th July, IST (Anfiteatro Abreu Faro)

Camp Start **9:00**

Camp ends **16:20**

Please see [Indico](#) for the full agenda.

EuPRAXIA-DN Camp II: Science

14th-15th July, Lisbon, Portugal

Arriving at IST



Entrance to the IST site

Please see subsequent slides for example routes to IST. We would recommend walking to the site as it is just 6 minutes away from Turim Alameda hotel.

Please use an app such as Google Maps for more precise directions.



When you arrive at IST, please look for **Anfiteatro Abreu Faro** in Complexo Interdisciplinar (highlighted in the red circle).

EuPRAXIA-DN Camp II: Science

14th-15th July, Lisbon, Portugal



WIFI @ IST

- A temporary guest network will be available, accessible through the tecnico-guest network.
- The account name is EuPRAXIA CAMP II
- The password is: A7jZn3

Accommodation

Please note, if you are a EuPRAXIA-DN fellow, or invited speaker based outside of Lisbon, accommodation has been booked for you.

The accommodation is at [Turim Alameda](#). You should have received an email to confirm this, but please get in touch if this is not the case.

A list of hotels in walking distance to the event venue can be found on the event's [Indico Page](#).

Please note the event organizer does not provide any special rates or recommendation for any of the hotels in Lisbon. The above list is based on proximity to the venue, it is not exhaustive, and it is provided only to facilitate your search of accommodation.

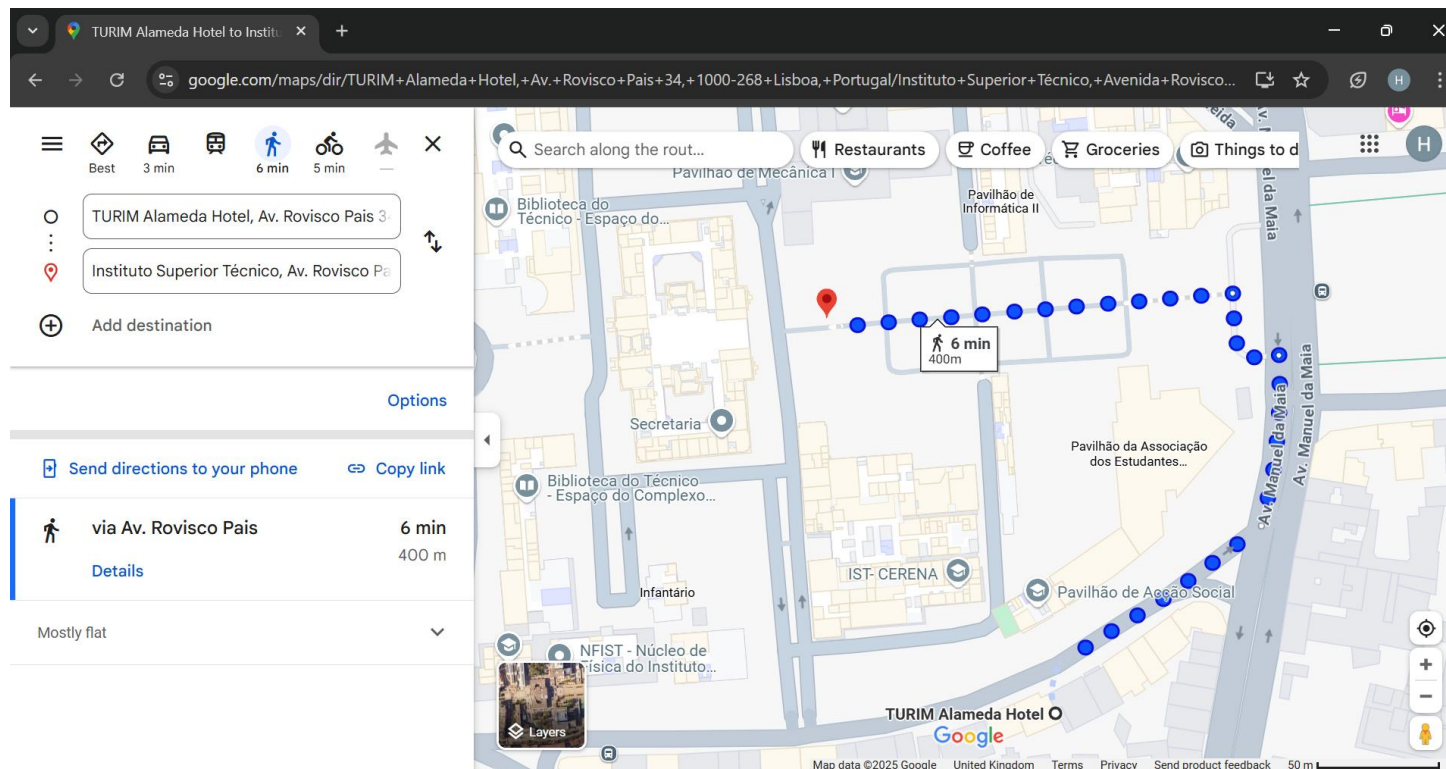
Please be advised that tourists must pay a City Tax when staying in Lisbon. This is usually a few Euros and will be payable to the hotel where you are staying.



How to get there - Walking route from Turim Alameda

The camp is located [here](#) (Av. Rovisco Pais, 11049-001, Lisboa).

Please see an example of a walking route from the Turim Alameda to IST. This will take approximately 6 minutes.



EuPRAXIA-DN Camp II: Science

14th-15th July, Lisbon, Portugal

Welcome Reception

The welcome reception will take place on Sunday 13th July from 18:00

- The welcome reception will be held at IST (Anfiteatro Abreu Faro)
- Light refreshments will be available

Dinner

Monday 14th July, from 19:00

[Cantinho do Avillez](#)

Rua dos Duques
de Bragança,
7 1200-162,
Lisbon

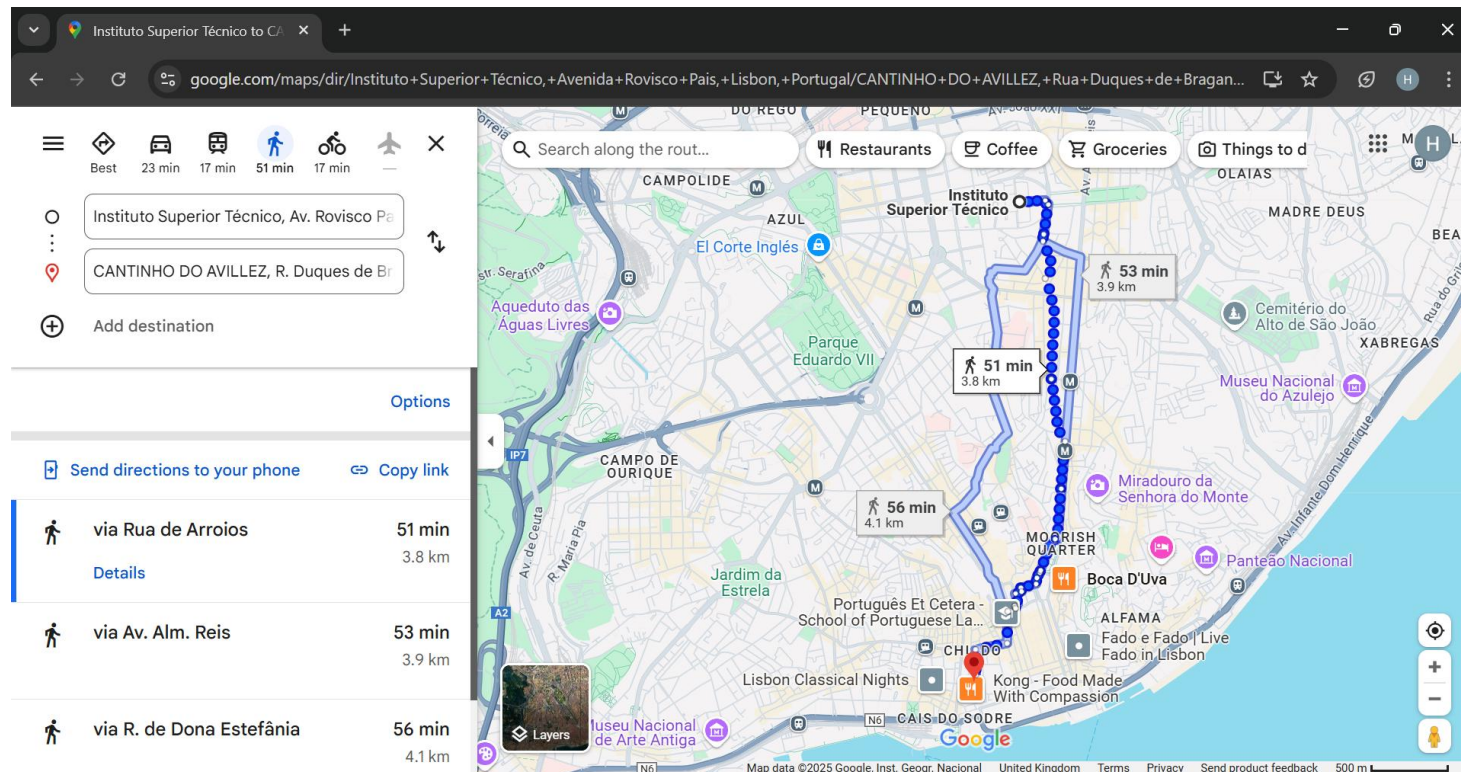


The restaurant is located [here](#). Please use Google Maps to research appropriate walking/public transportation routes.

How to get to Cantinho do Avillez (Workshop dinner venue) - Walking route from IST

The restaurant is located [here](#) (R. Duques de Bragança 7, 1200-162 Lisboa).

Please see an example of a walking route from IST to the restaurant. This will take approximately 50 minutes.



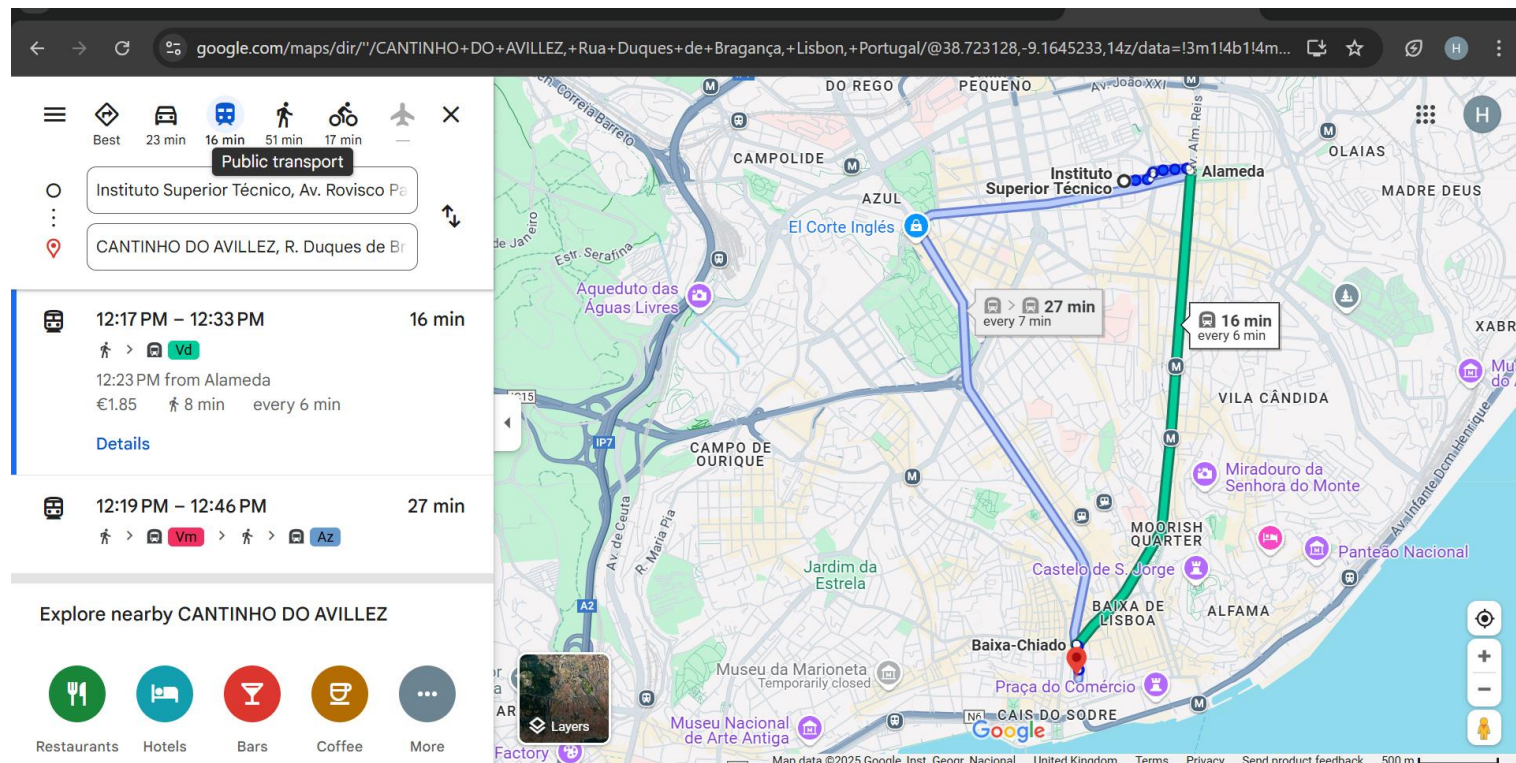
EuPRAXIA-DN Camp II: Science

14th-15th July, Lisbon, Portugal

How to get to Cantinho do Avillez (Workshop dinner venue) - Metro route from IST

The camp is located [here](#) (Av. Rovisco Pais, 11049-001, Lisboa). The restaurant is located [here](#) (Rua dos Duques de Bragança, 7 1200-162, Lisboa).

Please see an example of some public transport routes from IST to the restaurant, that will take from 15-30 minutes.



EuPRAXIA-DN Camp II: Science

14th-15th July, Lisbon, Portugal

How to get there from other locations

The camp is located [here](#) (Av. Rovisco Pais, 11049-001, Lisboa, Portugal).

Please use apps such as CityMapper or GoogleMaps to find directions to [IST](#) for the welcome reception and Camp, and to [Cantinho do Avillez](#) for the workshop dinner. If you need any assistance, please call Alexandra or Carsten, see contact information at the end.



EuPRAXIA-DN Camp II: Science

14th-15th July, Lisbon, Portugal



TÉCNICO LISBOA



UNIVERSITY OF
LIVERPOOL

EuPRAXIA
Doctoral Network

Metro Map



The Alameda station (circled in red) is close to the Turim Alameda hotel and IST. There is a direct route from the airport (the red line).

Tickets are available from vending machines at the entrance to the metro station.



EuPRAXIA-DN Camp II: Science

14th-15th July, Lisbon, Portugal



TÉCNICO LISBOA



UNIVERSITY OF
LIVERPOOL

EuPRAXIA
Doctoral Network



Image taken from Secret Escapes (via google)

**We look forward to
meeting you in Lisbon!**

**Contact in case
of Emergency**

Carsten +44 79 73 24 79 82

Alexandra +44 75 51 91 48 31

