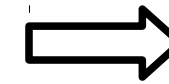


# **ETPO annual meeting scheduling**

# Brief update on scheduling's progress

## requirements and tool selection

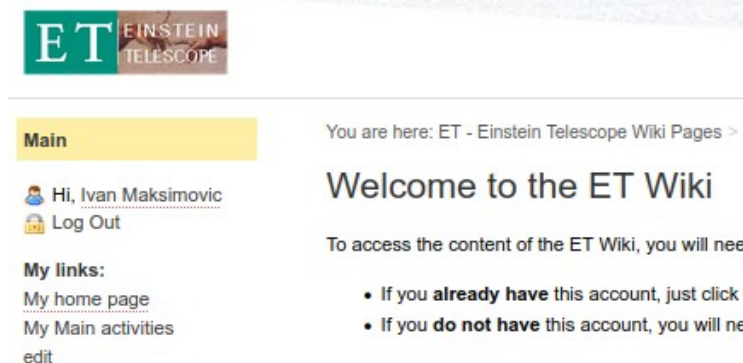
	JIRA	MS Project Server	ORACLE Primavera	Emptre dmsine	ClickUp	Project Libre	Monday
Compliance with all requirements	YES	YES	YES	YES	YES	NO	NO
If panels, comments							No critical path No sub-schedule Gantt limited
If No, comments							
Price for 200 sub-system manager		11 K€/year University tender 67 K€/year Commercial price	?	36 K€/year	84 K€/year	24 K€/year	
Price for 1300 Viewers		Same price for all ET users Premium 141 K€/y Enterprise 221 K€/y	?	78 K€/year	0 K€/year	?? K€/year	
Total price for 1500 users		141 000 €	215 000 €	114 000 €	84 000 €		
Tool year creation	2002	1984	?	2001	2017	2012	2012
Market share in %	22.90 %	9 %	?		N/A		3.00 %
Annual Revenue	9.9 B \$		?	> 50M€	4200 Millions/year		> 250M€
Number of project users	6500+ companies		?	300 000	10 millions		
Support, Training		YES	?	YES	YES		
Customize Dashboards and indicators	YES	YES	YES	YES	YES	YES	NO
Test in progress		YES	?	YES	YES	NO	YES
Extension plugin	YES		?	YES	YES	NO	NO
Extra plugin	Risk		?	Risk	Documents/free		
Extra plugin	Documents			Knowledge	Whiteboard/free		
Extra plugin				Documents	AI/paid		
visualization(Gantt, Kanban...)	YES	YES	YES	YES	YES	YES	YES
critical path	YES with AddOn	YES	YES	YES	YES	YES	NO
tasks manager (tasks association, indicators...)	YES	YES	YES	YES	YES	YES	YES
reporting (dashboard, indicators...)	YES	YES	YES	YES	YES	YES	YES
cloud storage	YES	YES	YES	YES	YES	YES	YES
full right mode (~200 users)	YES	YES	YES	YES	YES	YES	YES
read-only mode (~1300 users)	YES	YES	?	YES	YES	YES	NO
subproject schedule validation process	YES	YES	YES	YES	YES with addOn	YES	NO
schedule autoconsolidation update	YES	YES	?	YES	YES	YES	NO
software compatibility	YES	YES	YES	YES	YES	YES	YES
costs (traceability & distribution)	YES with AddOn	YES	YES	YES	YES	YES	NO
in-kind costs	YES with AddOn	YES	YES	YES	YES	YES	YES
EU laws agreement	YES	YES	YES	YES	YES	NO	YES
data (back-up & sustainability)	YES	YES	YES	YES	YES	NO	YES



2 solutions selected for evaluation

- Easyredmine
- Microsoft Project

## informations




meeting in Pisa in Oct 24

agreement of the scheduling's methodology  
with PBS/WBS architecture

## easyredmine

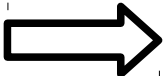
ready to start a evaluation  
with 10 project managers

program	ok
15 licences	ok
candidates	nok

## MS project

getting started

4 licences	ok
configuration	nok

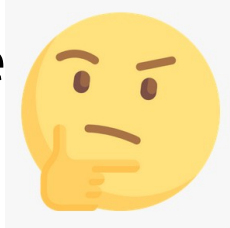
**first feedbacks**  **need for scheduling methodology's dissemination**  
same for risks, configuration....

 **aware managers to the scheduling's challenges**

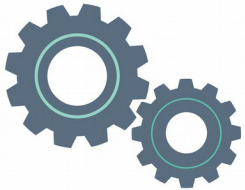
**scheduling training .....**

# Scheduling issues for ET management

How much of the budget do I have left at this stage of the project ?



Do I have the right resources in the right place throughout the project ?



Do I have the right informations to make the right decisions ?

How is the project evolving ?



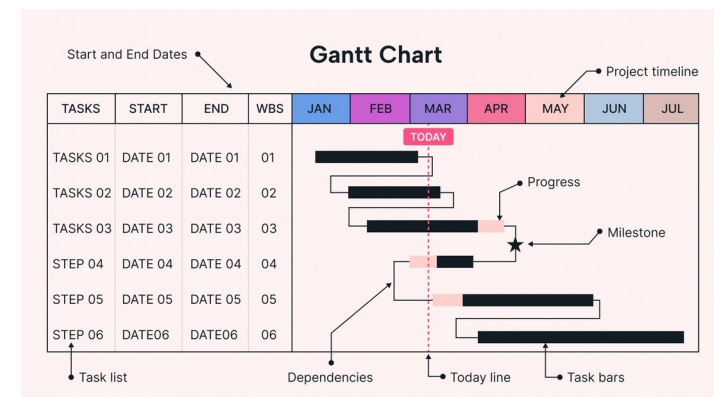
What is the deadline for this crucial stage of the project ?

What is impacting my subproject in terms of time ?



**solutions for these challenges :**

- methodology
- specific tools...



## ET-PO proposes training session for future ET project's managers



## ET-PO : feedback used as beta testing of schedule methodology



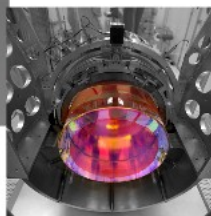
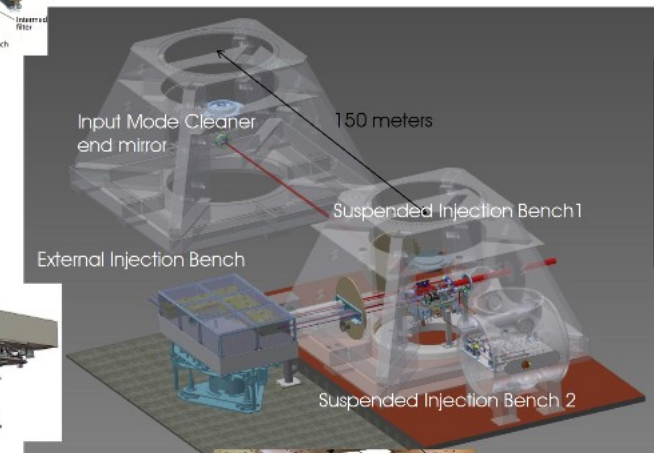
# Candidates : introduction to scheduling methodology

## 1) individual session by remote 2 hours



joint work session on a project  
involving 10 subsystems under the  
responsability of 10 managers

→ deeper familiarization







- allocation of responsibilities according ET governance WBS, PBS
- preparation and organization of tasks and timeline timeline chart
- estimation of the human resources and expertise number & type
- estimation of the equipment/materials budget costs





- give an overview of the project in real time
  - follow the defined timeline
  - report the human involvement and equipment costs
  - provides decision-making support to management
- GANTT chart  
critical path, alerts...  
dashboards  
indicators

## Requirements for such huge project

### Display

- ✓ visualization : Gantt, critical path, tasks manager, alerts...
- ✓ reporting : dashboard, indicators

### collaborative

- ✓ commercial online solution
- ✓ ~200 project managers in charge of the different sub-projects
- ✓ ~1300 scientists as viewers only
- ✓ sub-project schedule validation process
- ✓ schedule real-time update

### financial & legal standards

- ✓ costs traceability & distribution
- ✓ in-kind costs
- ✓ EU laws agreement
- ✓ data back-up & sustainability (> few decades provider failure, hacking...)

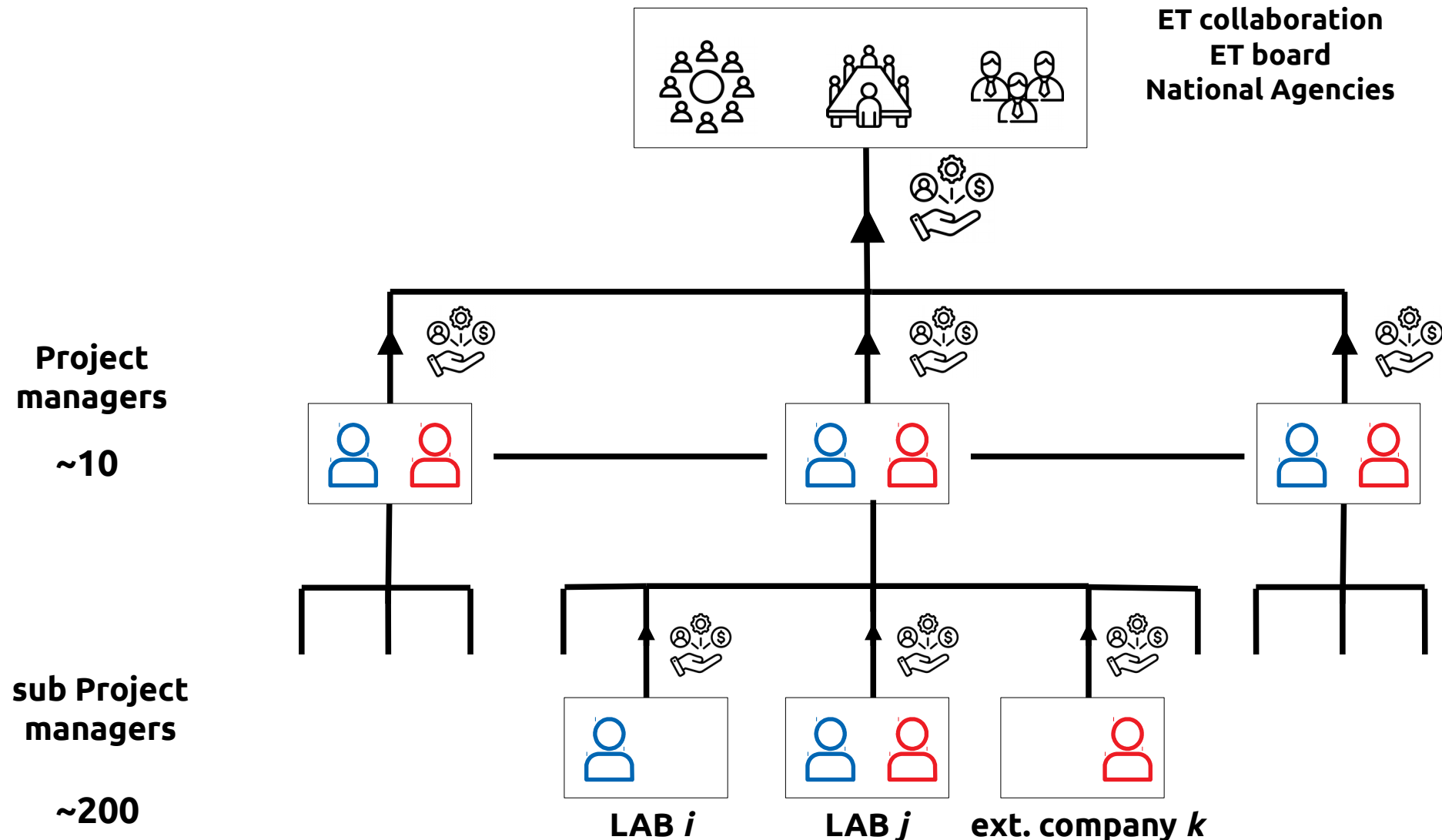
# Ideal organization : pair of **physicist** & **engineer** ?



EINSTEIN  
TELESCOPE

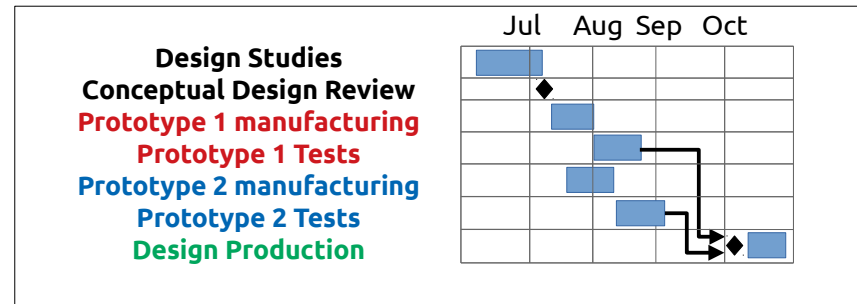


regular data upgrade & dashboard management

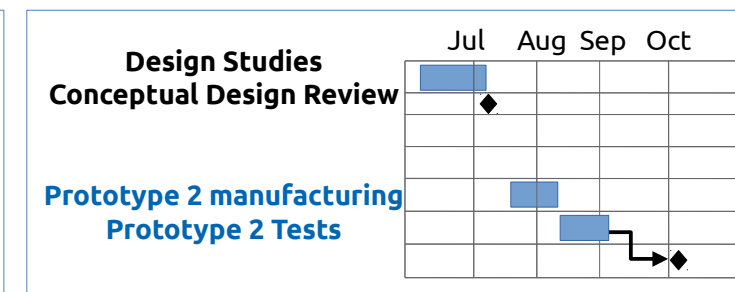
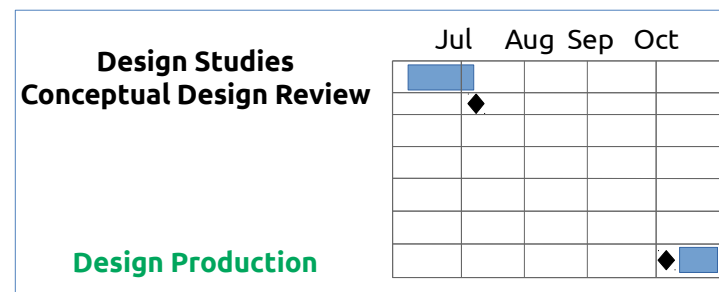
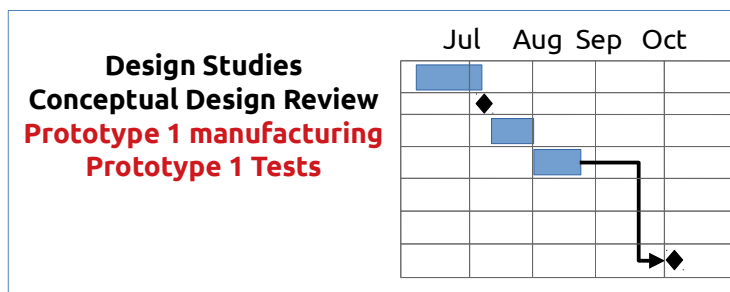
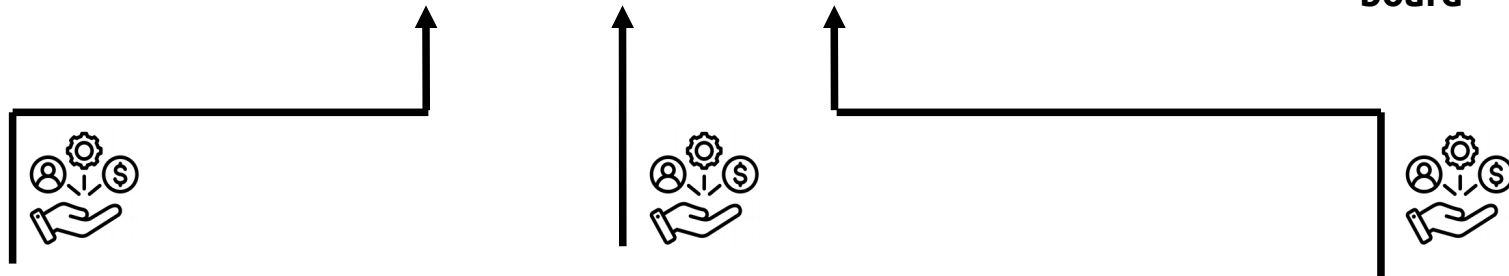


# Schedule real-time update for ET

  
Schedule admin



spent time  
real expenses  
risks



 Project  
Manager 1

 Project  
Manager 100

 Project  
Manager 200

- project's size and complexity requires ad hoc methodology
- need of on-cloud and user friendly commercial solution
- strong manager support needed to start : wiki, YouTube videos, online support...)
- training course :
  - individual training by remote 2 hours
  - joint session with 10 managers 1 day