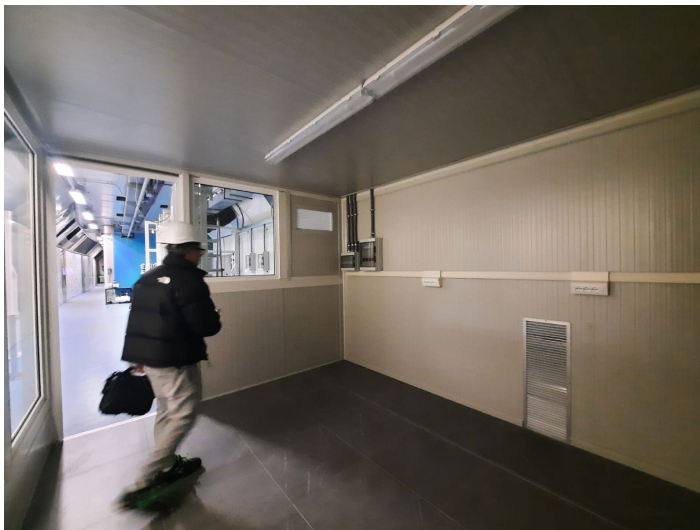


TC report

[Davide Fiorina – GSSI & INFN](#)

Works have started in 12/02/2025

- After a turbulent start, the HallF infrastructure is almost in place
- Final adjustments to be done today and tomorrow
 - Fix sliding door
 - Fix electrical panels conformity
 - Fix compressed air line



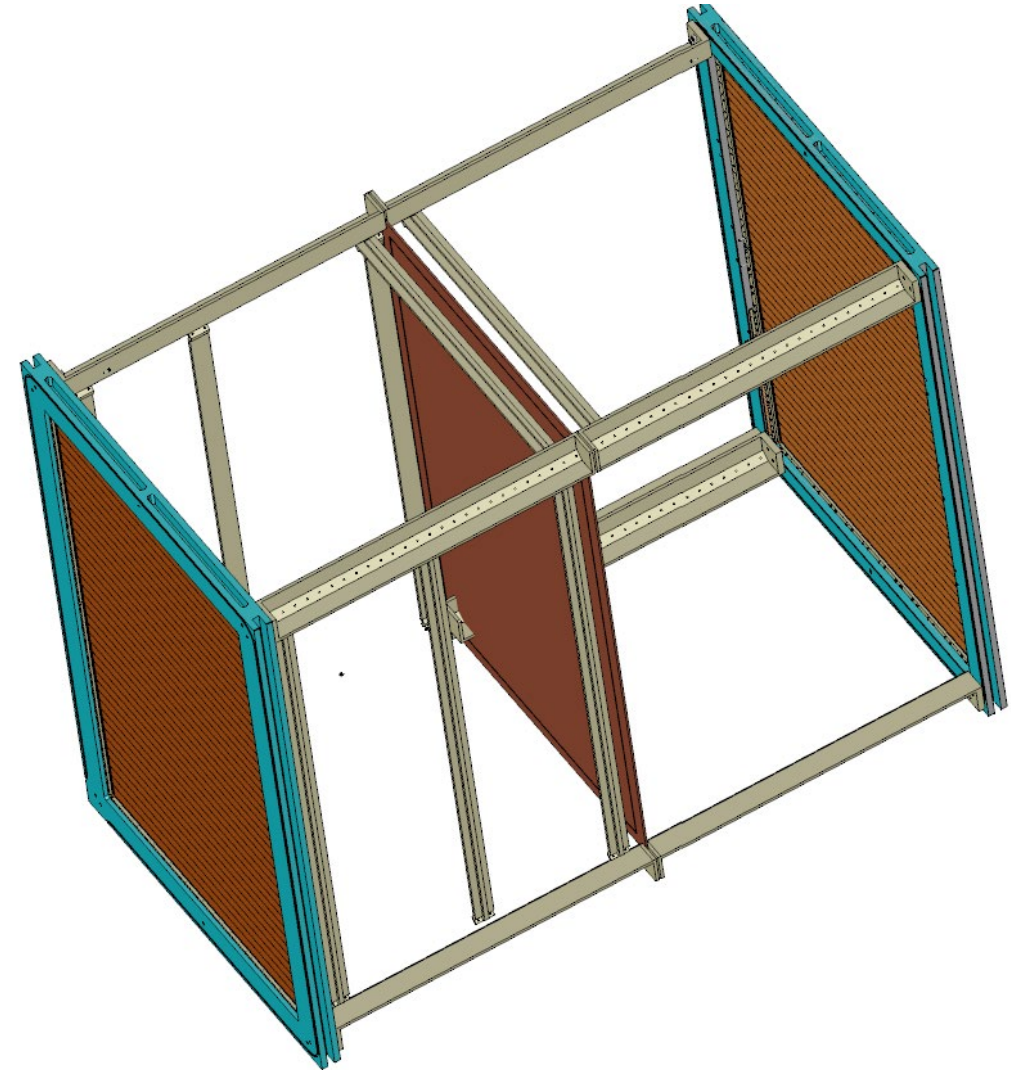
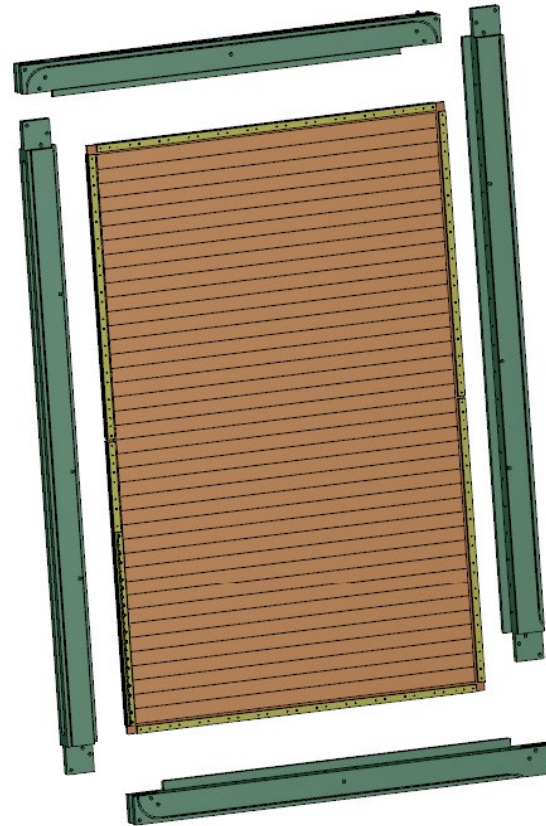
Daniele Pierluigi and LNF team

GEM frame

- Design finalized
→ 2x stack in production

Field Cage

- Preliminary design in place
- Many small adjustments to make to increase sufficiency the detail level for the real integration in the 3D model
- Task force is working with Daniele and the LNF team to achieve this ASAP



LNF and LNGS design team

- **New smaller source openings integrated both in PMMA and copper vesels**
- **PMMA**
 - Structural calculations are ongoing to understand the mechanical proprieties of the PMMA sides
 - Branches: less material, more cost (time and money)
 - Plain: more material, less cost (time and money)
 - Plexiglass window on camera interface
 - Understand the deformation of plexiglass under $<10\text{mbar}$ overpressure
 - Fixing the thickness

Cathode Integration (discussion with Roberto)

- Cable gland in copper plexiglass polymer sealing in PMMA banana cable for cathode
- Possibly from the top side of the detector

GEMHV (Roma1)

- Decoupling circuit designed by Roma1 soon to be produced and tested

