

Update on ITINERIS

WP5 marine Domain, Activity 5.7

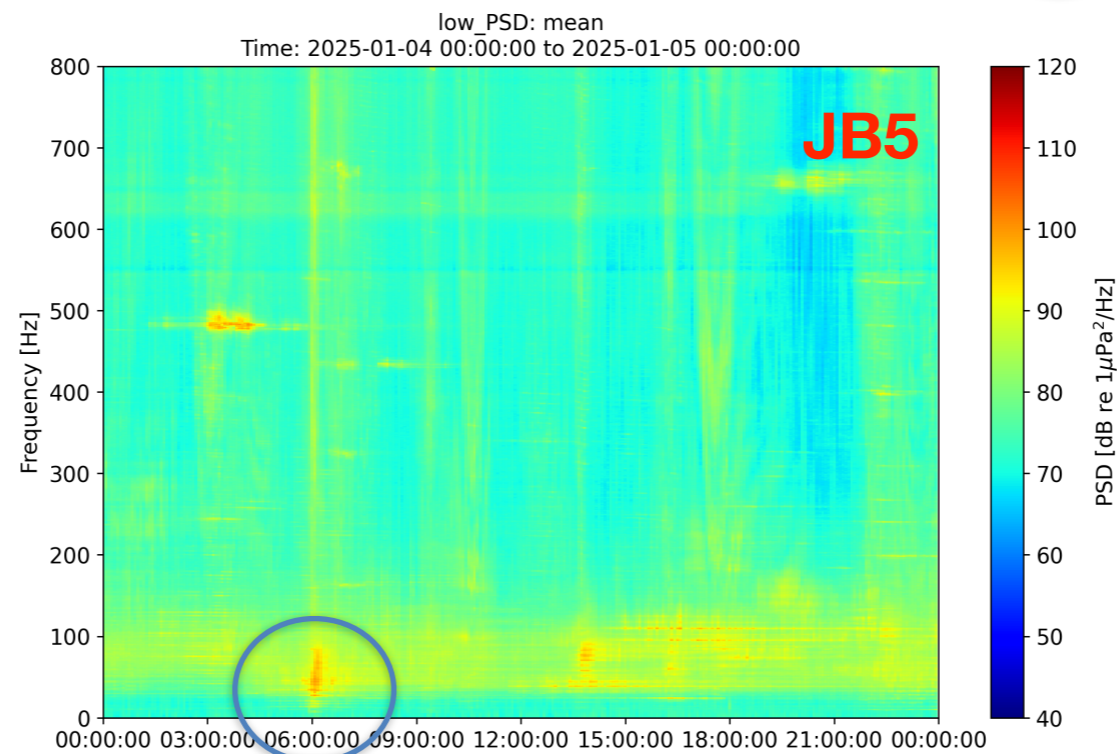
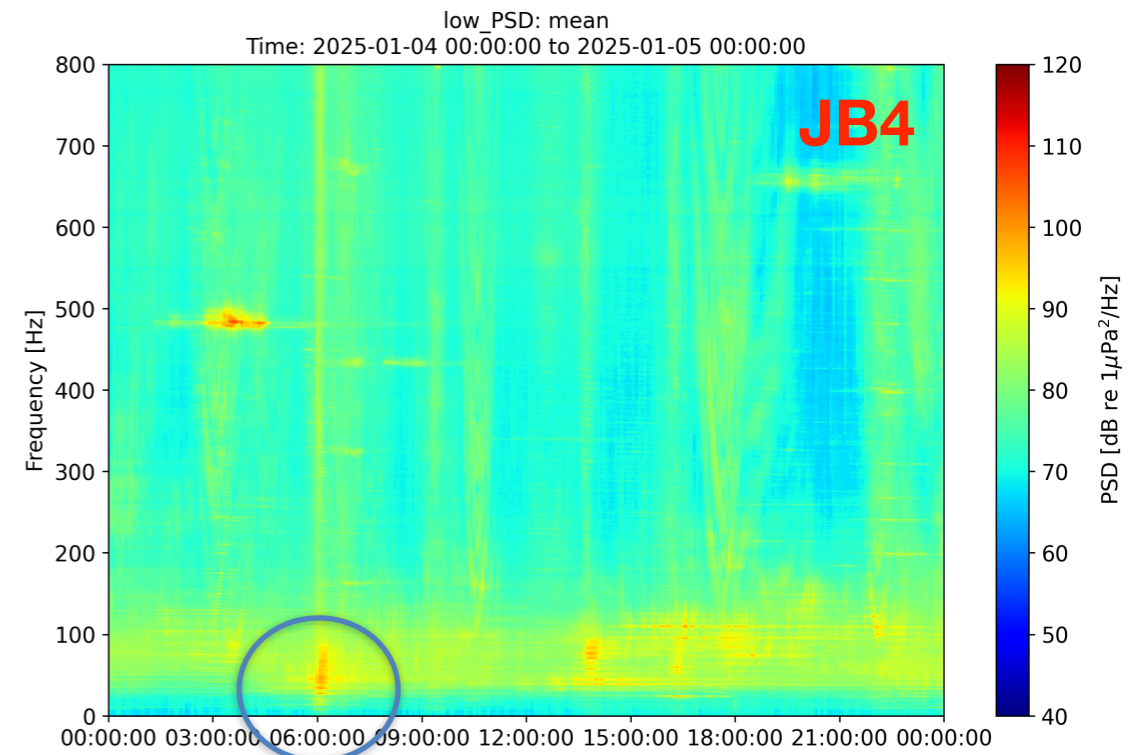
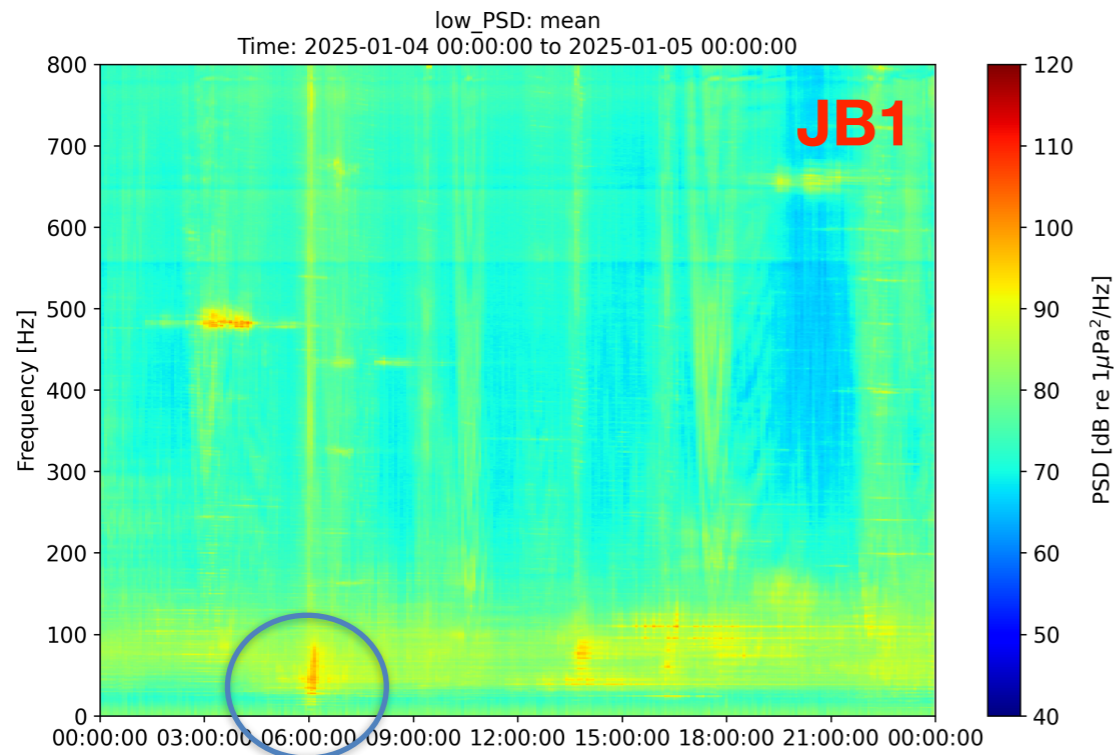
Simone Sanfilippo

WP5 marine Domain, Activity 5.7: Update 15-01-25

- **Hydrophone** (JB1, JB4 and JB5) **ON** since 14-11-2024 after sea camping and ARCA commissioning
 - Smooth data taking from 27-11-24
 - Data loss (about 25 mins per day) during first days operations, now fixed
 - **Earthquake** event of Jan 4th (5:57 UTC off-shore Syracuse) *probably detected* but hard to claim it from the spectrogram due to the presence of several ships in the area (see next)
 - On Jan 10th we **lost JB1** due to an ARCA PFE problem (still to be fixed)
 - *Last useful run is at 20:45 UTC*
 - *Last connection with hydro on JB1 at 20:53 UTC (~3 mins recording)*
- **ERDDAP** server is **up and running** since Dec 20th (<http://192.84.151.12:8080/erddap>) (some configuration parameters still pending, see *Danilo's slides*).

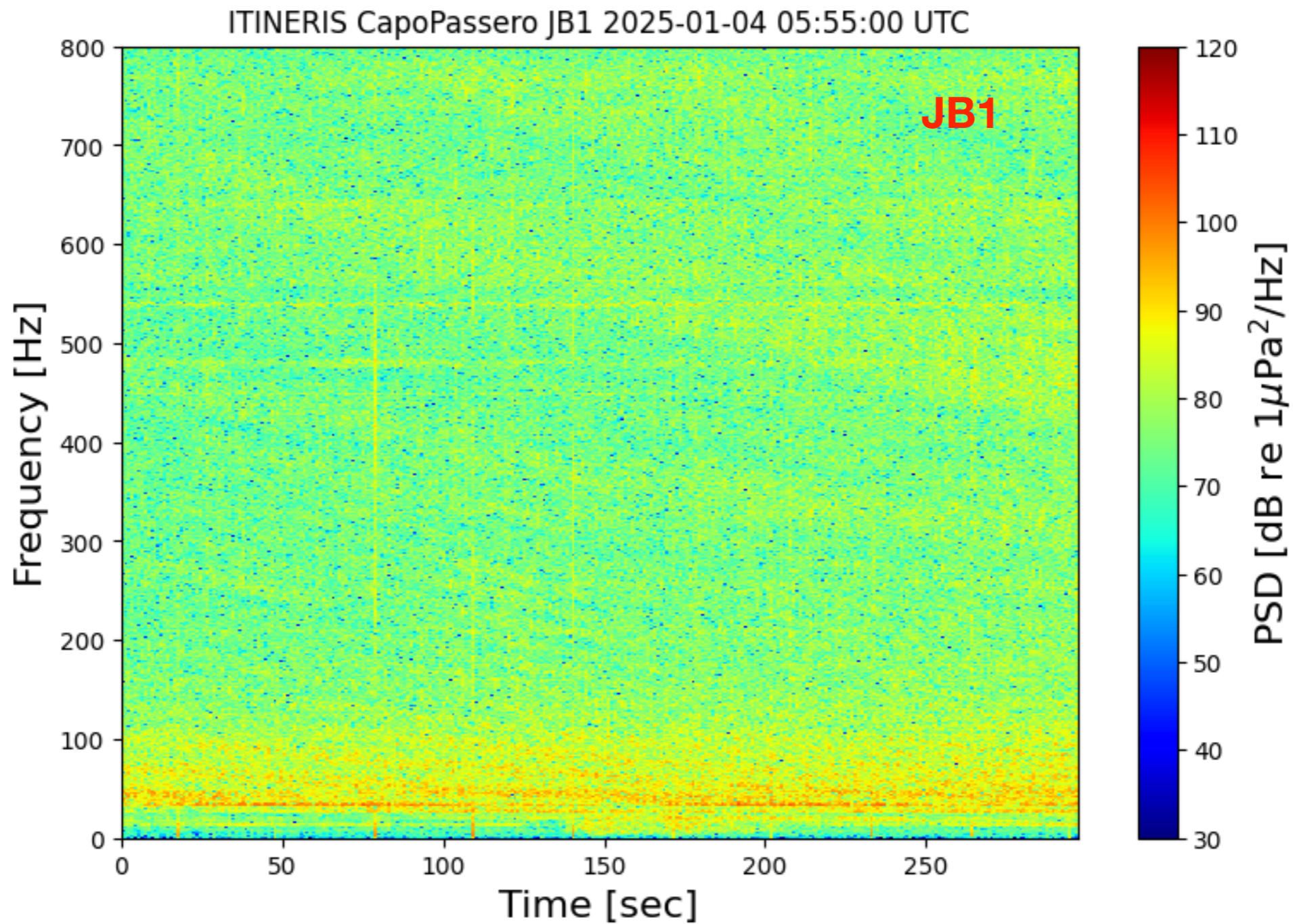
WP5 marine Domain, Activity 5.7

Earthquake event (Jan 4th @ 5:57 UTC)



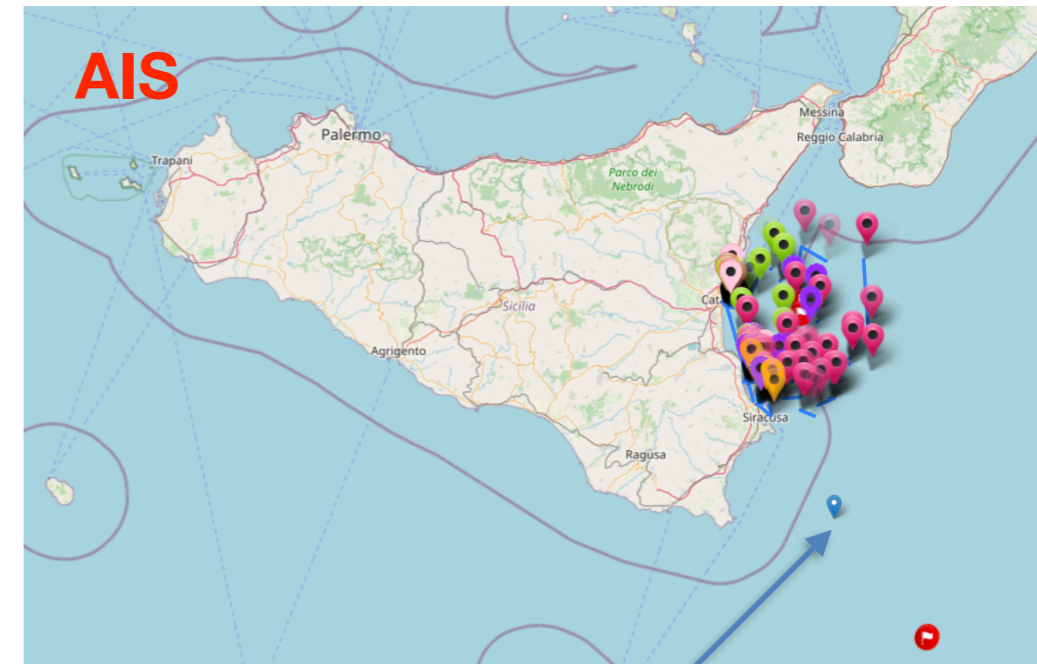
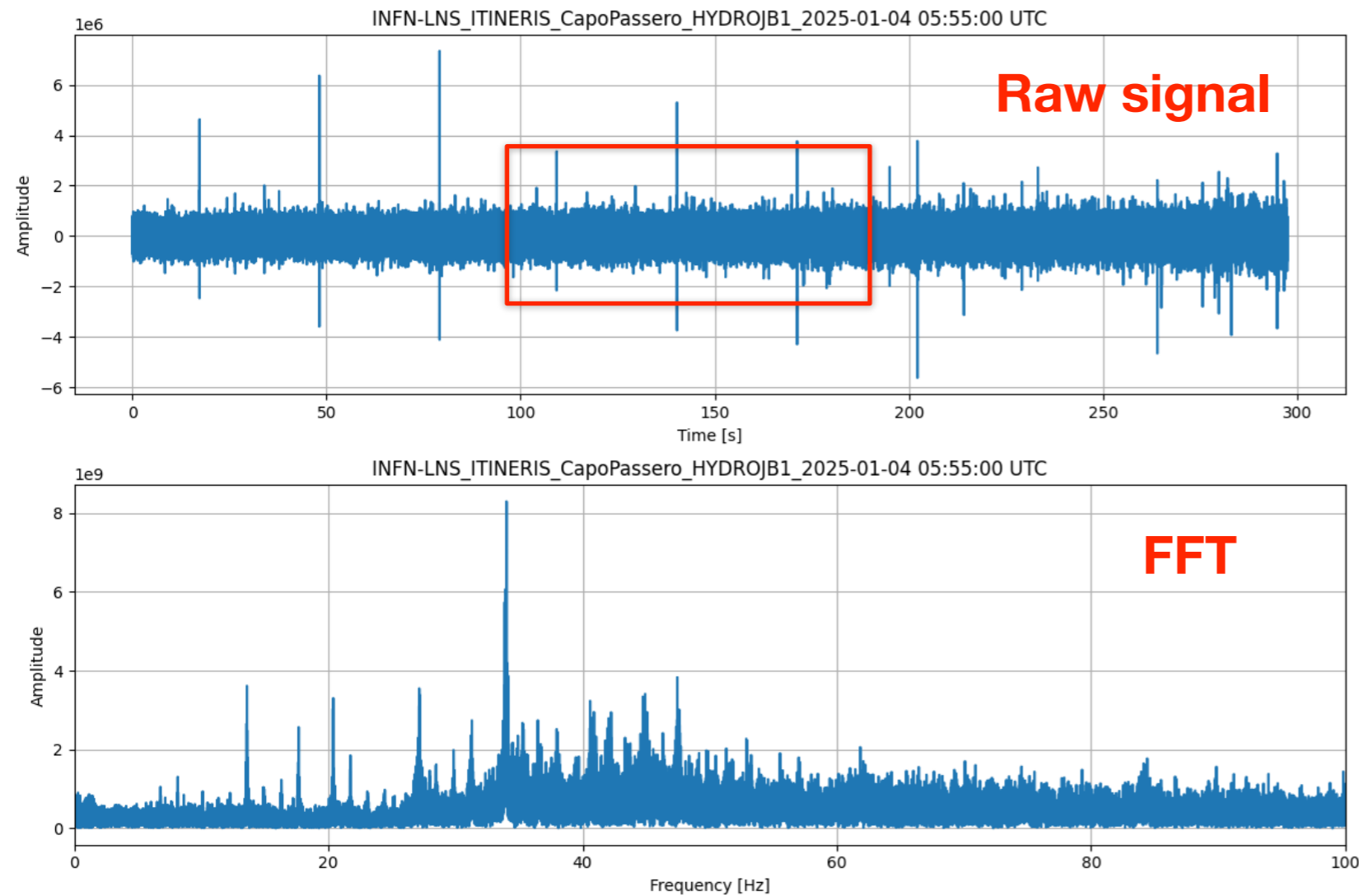
WP5 marine Domain, Activity 5.7

Earthquake event (Jan 4th @ 5:57 UTC) in details from JB1



WP5 marine Domain, Activity 5.7

Earthquake event (Jan 4th @ 5:57 UTC) from JB1



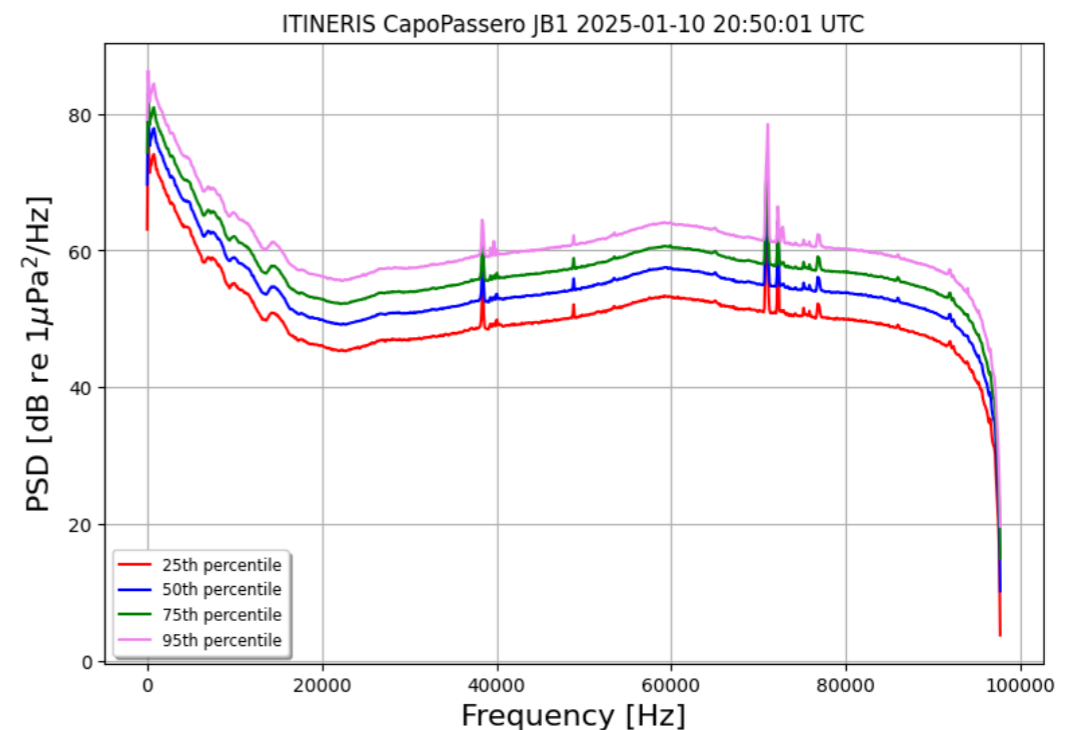
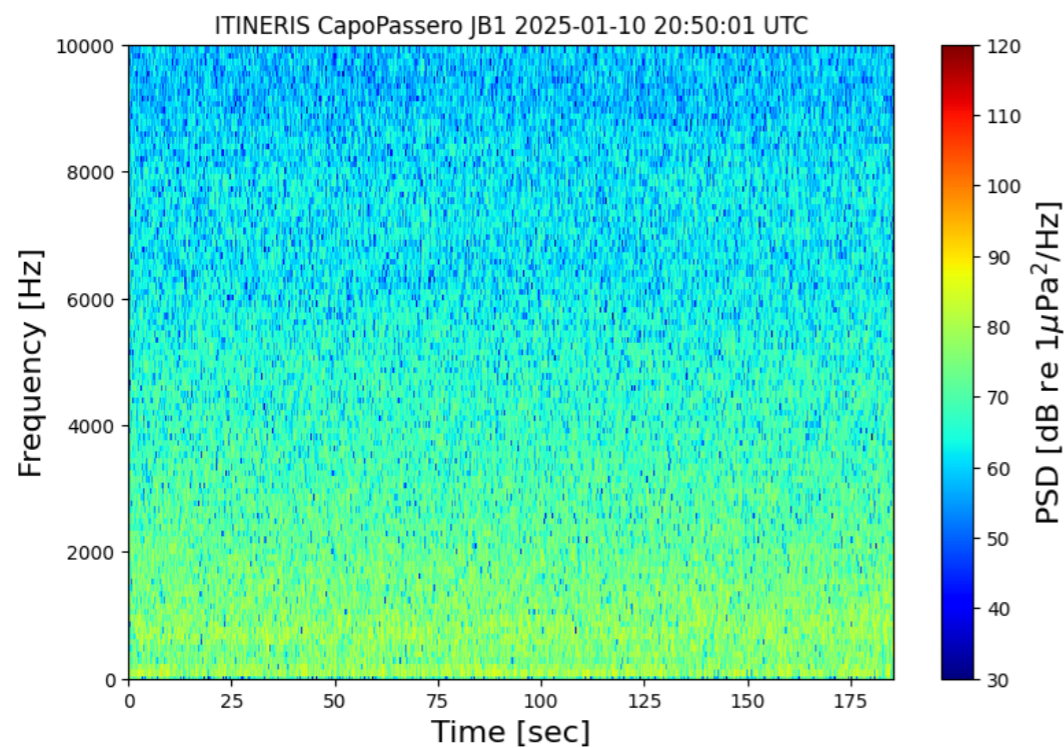
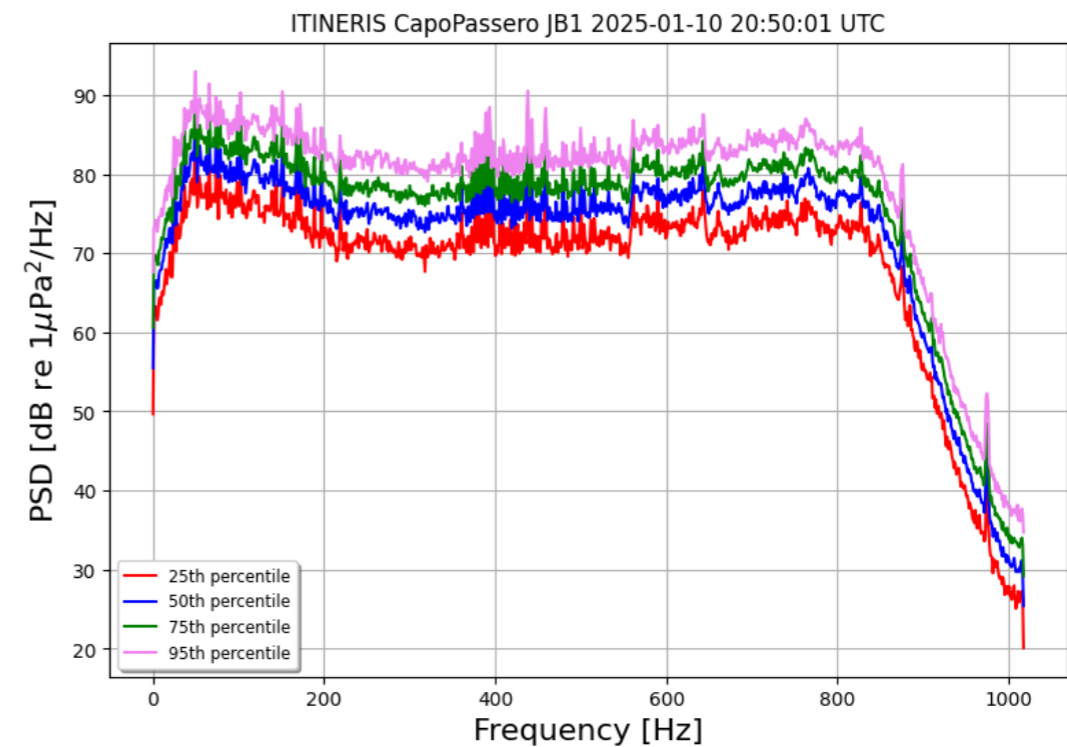
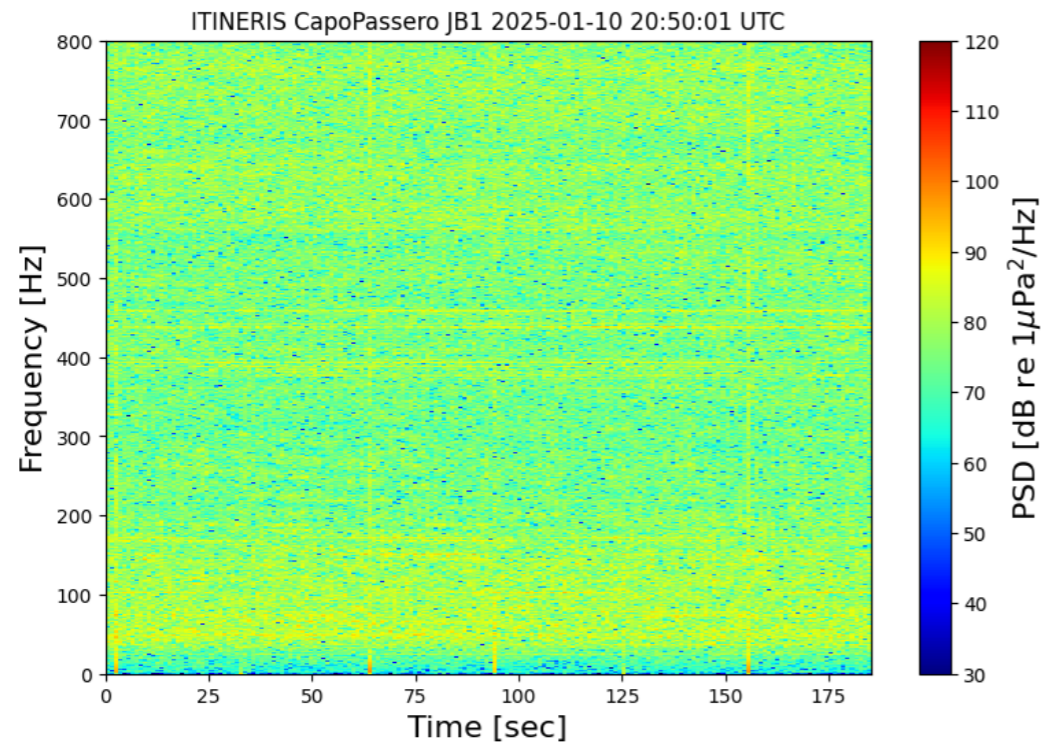
Earthquake (INGV)

ARCA Site (INFN - LNS)

Same results from JB4 and JB5

WP5 marine Domain, Activity 5.7

Last breath of ARCA (Jan 10th @ 20:53 UTC) from JB1



WP5 marine Domain, Activity 5.7: Data Storage update 15-01-2025

```
superuser@ST-DBRAW:/$  
superuser@ST-DBRAW:/$ df -h  
Filesystem                Size      Used Avail Use% Mounted on  
/dev/md0                   7.9G     1.4G   6.4G  18% /  
devtmpfs                   3.9G         0   3.9G   0% /dev  
tmpfs                      3.9G    240K   3.9G   1% /dev/shm  
tmpfs                      3.9G     30M   3.9G   1% /run  
tmpfs                      3.9G         0   3.9G   0% /sys/fs/cgroup  
tmpfs                      3.9G     28M   3.9G   1% /tmp  
/dev/loop0                 27M     767K   24M    4% /tmp/SynologyAuthService  
/dev/mapper/cachedev_0     30T     9.4T   20T   33% /volume1  
/dev/mapper/cachedev_1     20T     18T   1.9T   91% /volume2
```

- Data saving moved **from /volume2/RAWDATA to /volume1/DATARAW** because lack of disk space (I'm thinking to reserve 1 TB as *emergency buffer* on /volume2)
- According to our harvesting strategy we will keep 5 mins/hour file (currently removing (un)necessary files).