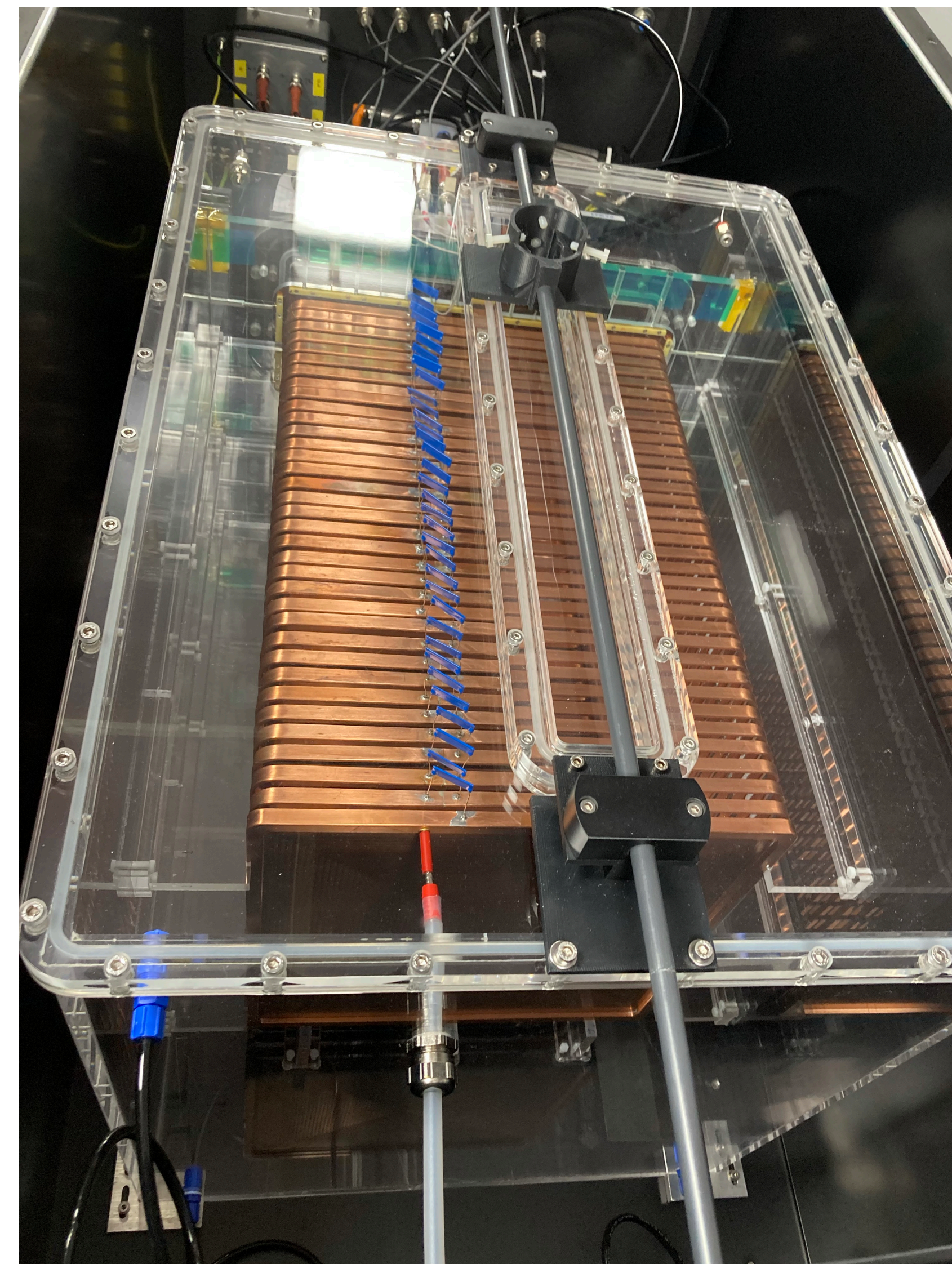


LIIME: status

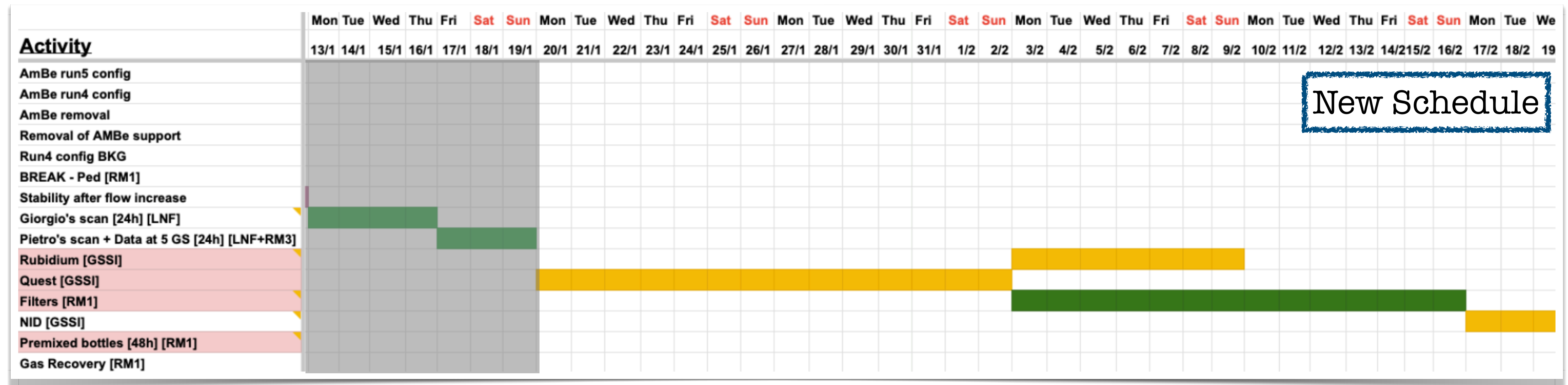
Stefano Piacentini

General Meeting

30/01/2025



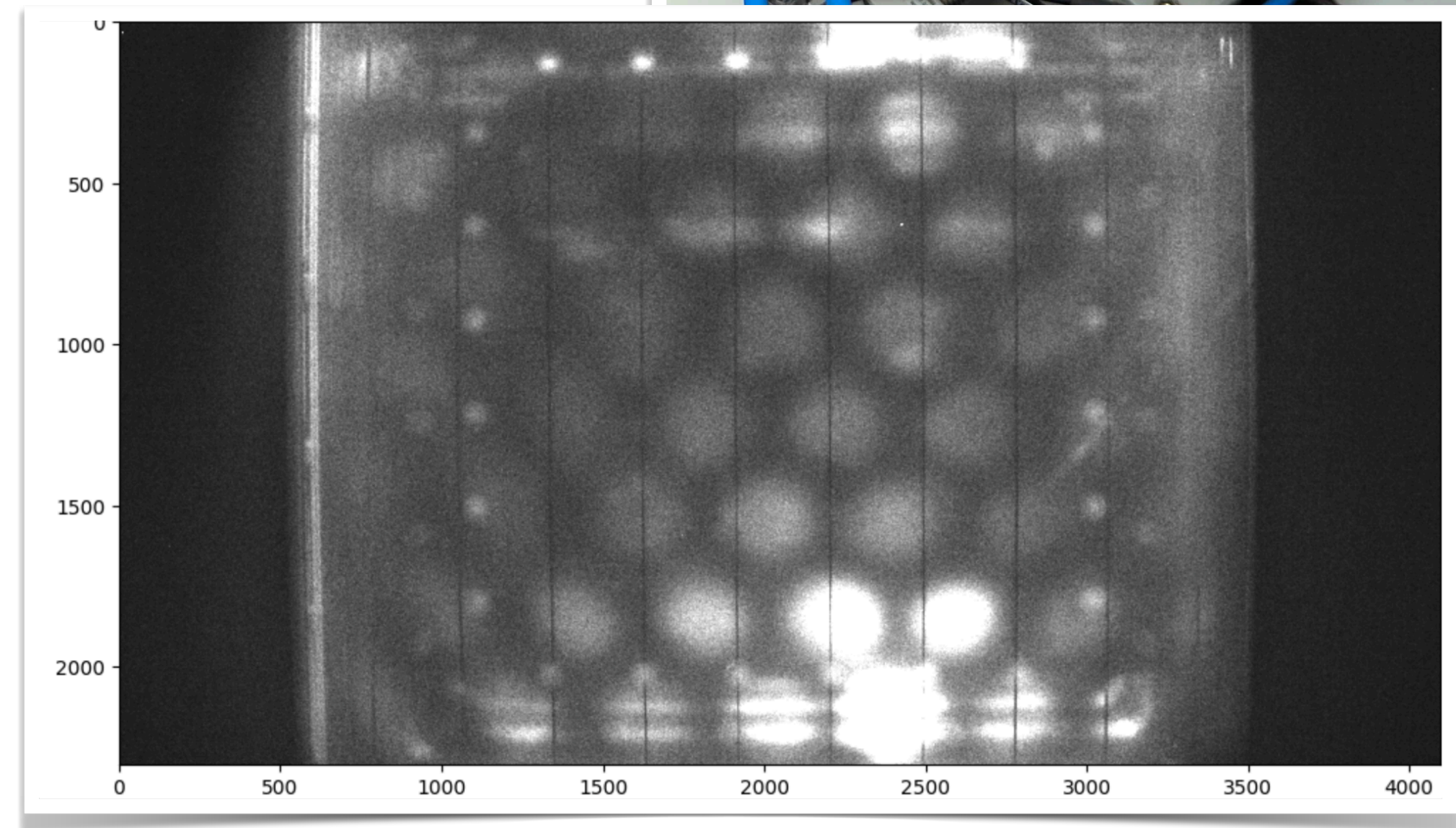
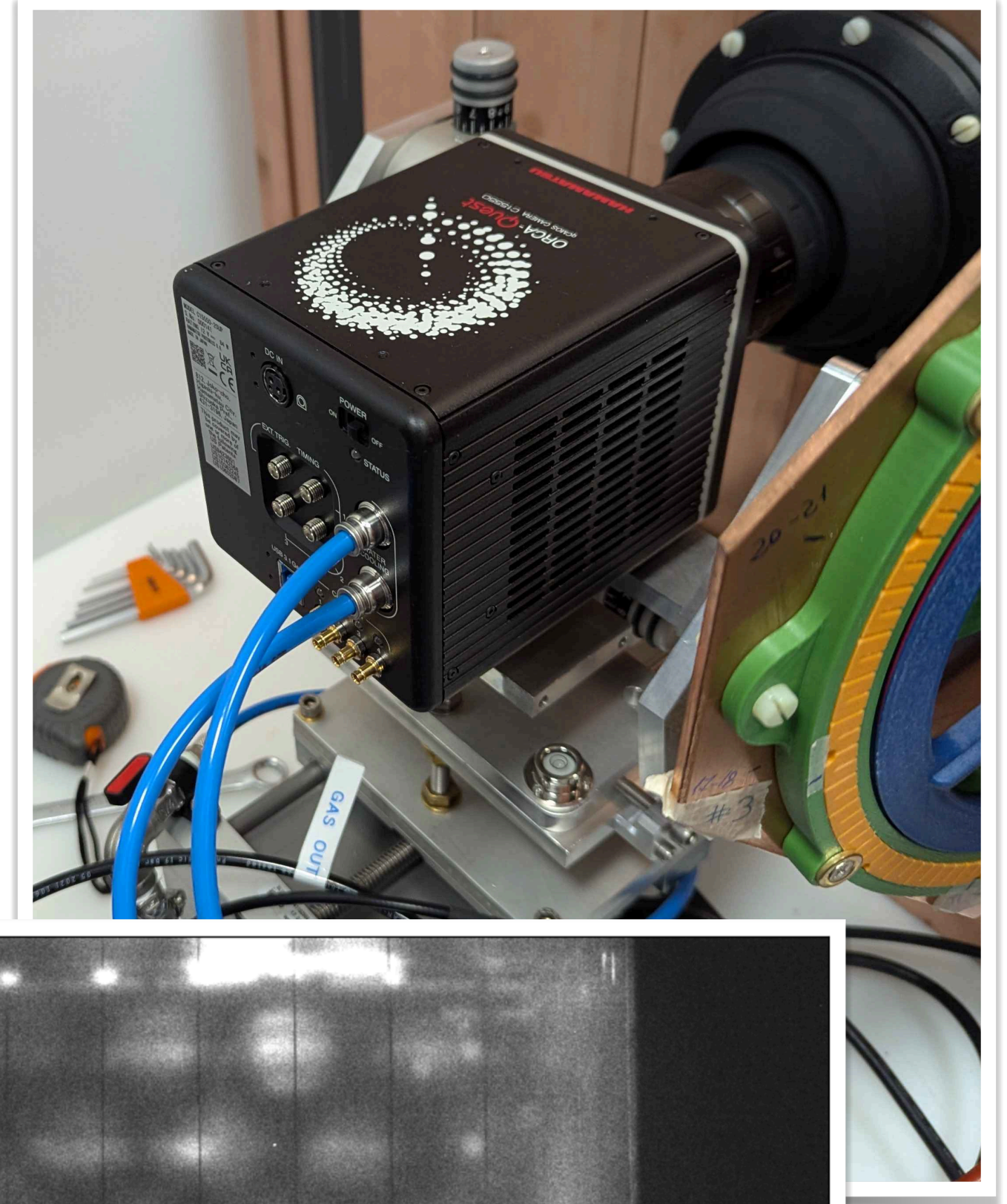
Tests in 2025: plans slightly changed



- **We received the ^{83}Rb source** two days ago, it's currently located in the LIME room, but we couldn't install it on the gas line yet, because we're missing specific adapters.
- Given the foreseen delay to obtain the source, **we started installing the QUEST 1 on the LIME setup** (see next slides)
- We received all the **filters** we need for the tests, we are coordinating with the technicians for the installation (foreseen to happen **next week**)

QUEST 1 in operation

- We successfully installed the **QUEST 1** on the LIME DAQ
- Lens installed for now is **EHD**
- **Water cooling** is active
- With the camera support currently installed we were not able to successfully image the entirety of the GEM plane (more space on the back was needed)
- However we used the LED installed inside the shielding to find the best alignment and focus



Data collected so far with Quest 1

- **We repeated all the scans in VGEM1, VDRIFT, VGEMALL and z** proposed by Giorgio and Pietro with the new camera
- We collected ~ 80 h of **water cooled pedestals** (needed for ML applications by our Brazilian colleagues)
- Since the **26th of January we are running background low gain data** with daily scans in z. However note that these are useful just for tests as the humidity is out of the “good condition” range as the humidity filters are saturated.

A few pictures

