

Remon van Gaalen

Simulations, analysis, and procedures definition for alignment, test and calibration of complex Adaptive Optics systems in the framework of the new generation of telescopes and instruments

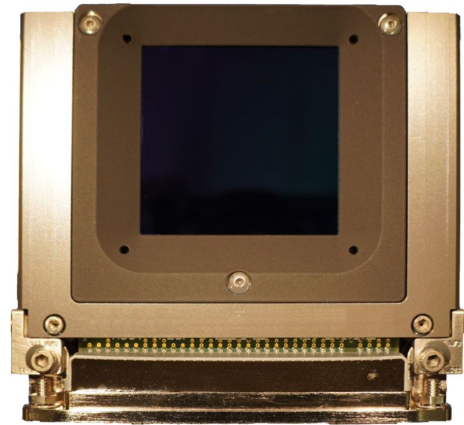
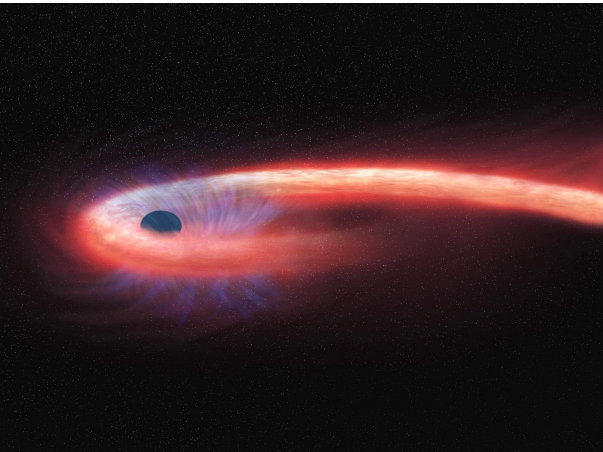


INAF - Osservatorio Astronomico di Padova



Background

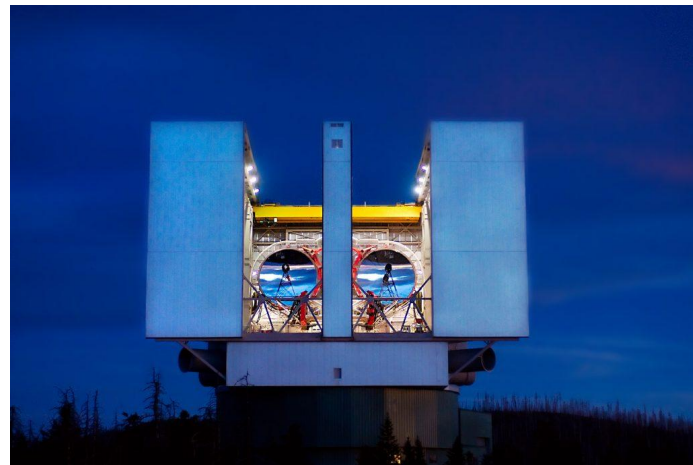
- Leiden University - BSc Astronomy / MSc Astronomy & Instrumentation
 - Compressed Sensing: Earth Observation Using a CASSI System
 - Analysing TDE Dust Echos
 - Tradeoff Study for METIS' N-Band Detector



Current Work

Simulations, analysis, and procedures definition for alignment, test and calibration of complex Adaptive Optics systems in the framework of the new generation of telescopes and instruments

- NirvanaVIS
 - Large Binocular Telescope
 - Speckle Holography
- MATTO
 - MCAO Testbench
- Detector Characterization



Current Work

Simulations, analysis, and procedures definition for alignment, test and calibration of complex **Adaptive Optics** systems in the framework of the **new generation of telescopes and instruments**

- NirvanaVIS
 - Large Binocular Telescope
 - Speckle Holography
- MATTO
 - MCAO Testbed
- Detector Characterization

