

WP6 Report

Low Radioactivity Measures

Status of materials

	alias	LNF	LNGS	in measure	measured	analysed
FC-kapton+Cu			x	no	yes	on-going
FC-PET+Cu	PVC		x	no	yes	yes
FC-PET+Cu no glue	PVC no glue		x	no	yes	on-going
FC-PET+Cu+glue	forato	x				
nylon6	PA6		x	no	yes	on-going
Foglio GEM			x	no	no	no
nylon screws			x	no	yes	no
steel screws			x	no	yes	no
SMD resistors			x	no	yes	no
CMOS camera				no	yes	no

Debugging the analysis method, to, asap, compare the three different FC foils

Optical windows



Visible on GIN?

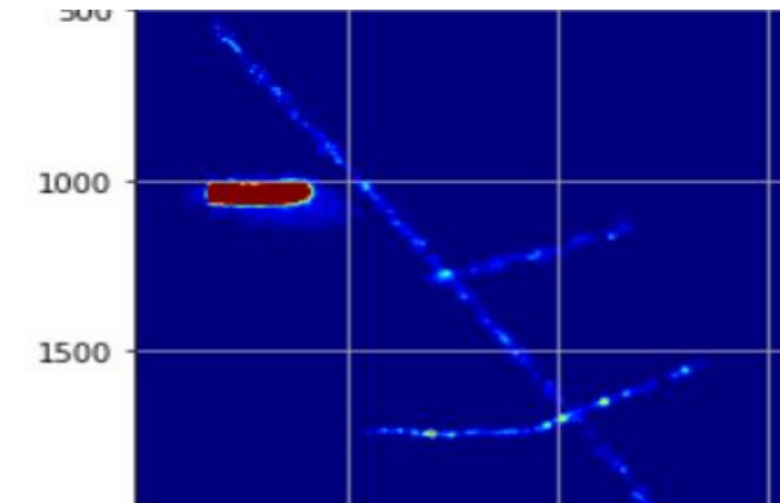
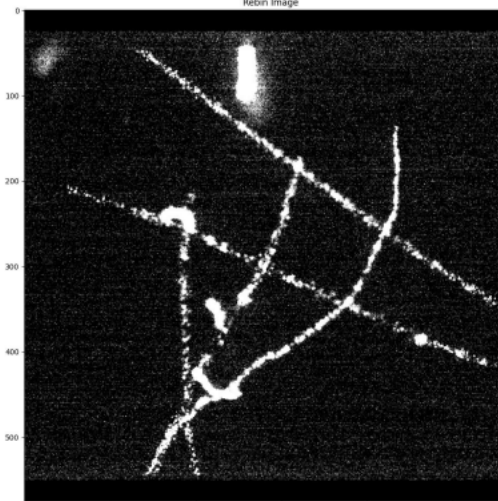


GIN

Dmax = 70 mm (corner GEM)
 x = 35 mm
 L = 155 mm

Estimated D-D' (max)
 25.8 mm = 515 px
 $\Delta_{co} = 75$ mm (blurry)

Should be Visible

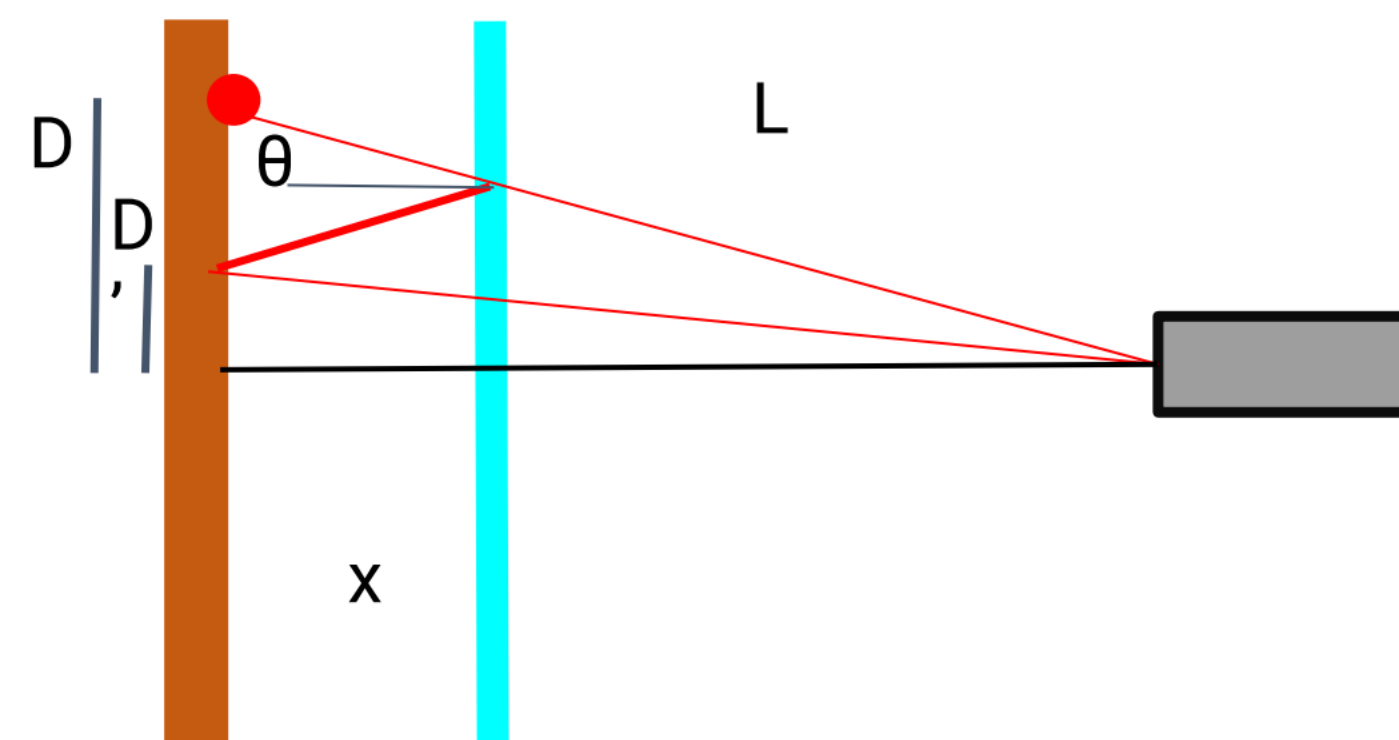


They are: But blurred:
 Is it different material of window?

LIME max (for comparison)

Dmax = 240 mm (corner GEM)
 x = 50 mm
 L = 623 mm

Estimated D-D' (max)
 35.6 mm = 230 px
 $\Delta_{co} = 107$ mm (blurry)



SCHOTT optical glasses (fused silica, glass etc.)

Transmission > 99% (PMMA has 92%, mylar less)