

2024 CNAO data taking

# Links

## .pptx of this presentation

[https://docs.google.com/presentation/d/1Meep0WRogN0\\_5a62veMSMKbM90kVWtIN/edit#slide=id.p2](https://docs.google.com/presentation/d/1Meep0WRogN0_5a62veMSMKbM90kVWtIN/edit#slide=id.p2)

## Detailed Calendar

[https://docs.google.com/spreadsheets/d/1rGJldfWLbzdLWMMYEsiSKyJ\\_caXKIWeN/edit?gid=275983815#gid=275983815](https://docs.google.com/spreadsheets/d/1rGJldfWLbzdLWMMYEsiSKyJ_caXKIWeN/edit?gid=275983815#gid=275983815)

## List of Participating People

<https://docs.google.com/spreadsheets/d/1dH8RXFKtWZcLapgrO81jF6kWqW2ikrAs/edit?gid=1137630794#gid=1137630794>

## Radioprotection

[https://drive.google.com/drive/u/1/folders/1Pu11mlr\\_AhnirZdUT95rVmSaWqFWf7SJ](https://drive.google.com/drive/u/1/folders/1Pu11mlr_AhnirZdUT95rVmSaWqFWf7SJ)

# Schedule

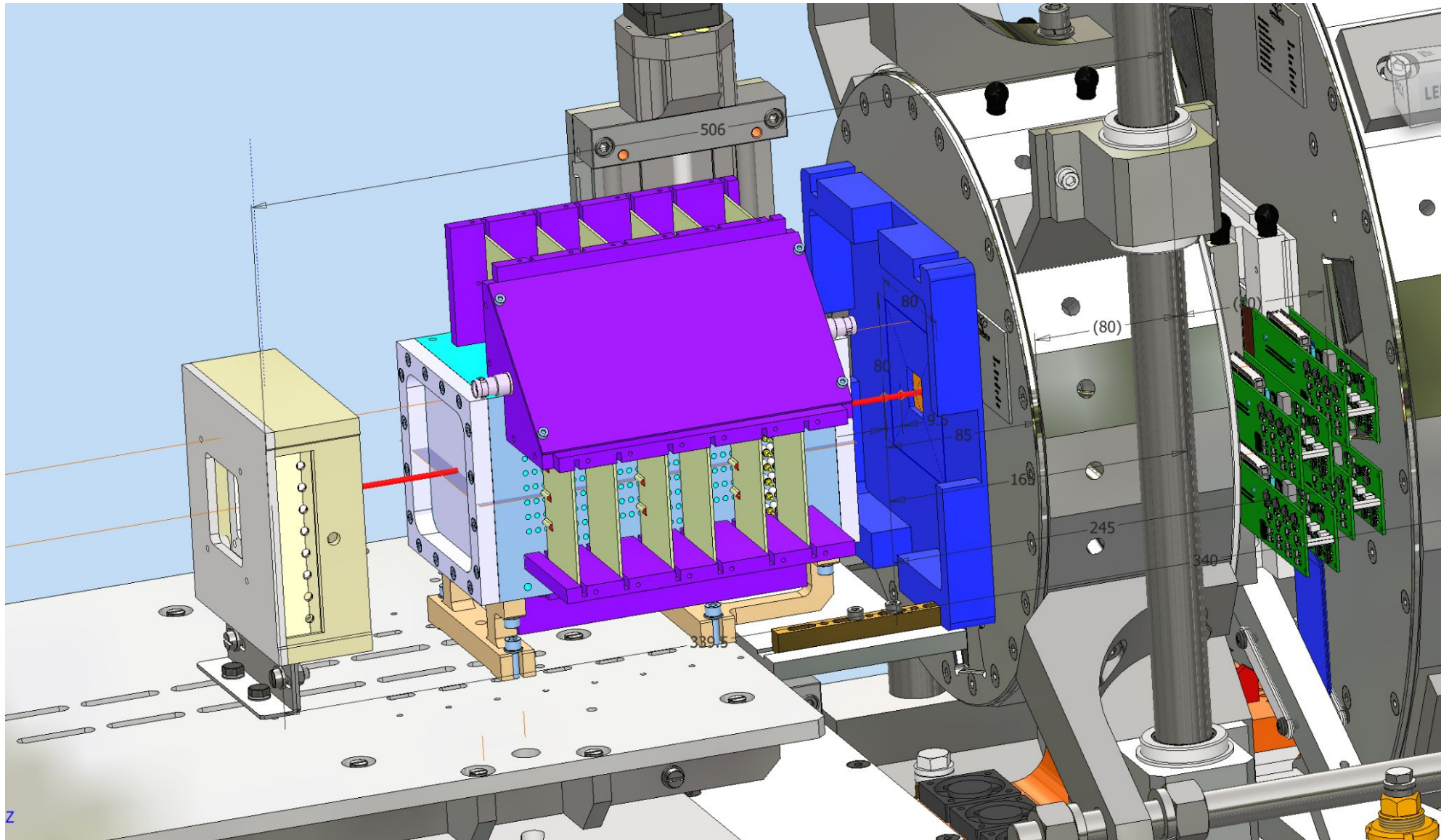
Monday	Tuesday	Wednesday	Thursday	Friday	Saturday	Sunday
28 Oct.	29 Oct.	30 Oct.	31 Oct.	1 Nov. <i>Installation</i>	2 Nov. <i>06:00 - 13:00</i> Beam Tuning TOFpRad	3 Nov. <i>06:00 - 13:00</i> Beam Tuning TOFpRad
4 Nov. <i>Access through construction site</i>	5 Nov. <i>Access through construction site</i>	6 Nov. <i>Installation</i>	7 Nov. <i>Installation</i>	8 Nov. <i>Installation</i>	9 Nov. <i>14:00 - 22:00</i> Beamtime	10 Nov. <i>14:00 - 22:00</i> Beamtime
11 Nov.	12 Nov.	13 Nov.	14 Nov.	15 Nov.	16 Nov. <i>06:00 - 13:00</i> Beamtime	17 Nov. <i>06:00 - 13:00</i> Beamtime
18 Nov. <i>22:00 - 04:00</i> Beamtime	19 Nov. <i>22:00 - 04:00</i> Beamtime	20 Nov. <i>Dismount</i>	21 Nov. <i>Dismount</i>	...	...	? <i>Collection of irradiated materials</i>

# Documentation

Documentation is the same of the last year, however, since some documents are still valid we need to verify what is missing...

To do so, please fill the participant list so we can check the status of each participant with the CNAO personnel. (if you are not sure about one person, add him in the list for now and then we will delete him from the list later)

# New vertex support



We should give an answer to Sandro asap about this configuration

# Measurement Plan

More physics data?  
Specific calibrations?

**All detector experts should send me the geometrical configuration of the detector and channel maps, for TW and Calo we already have the map but maybe it have to be updated**