

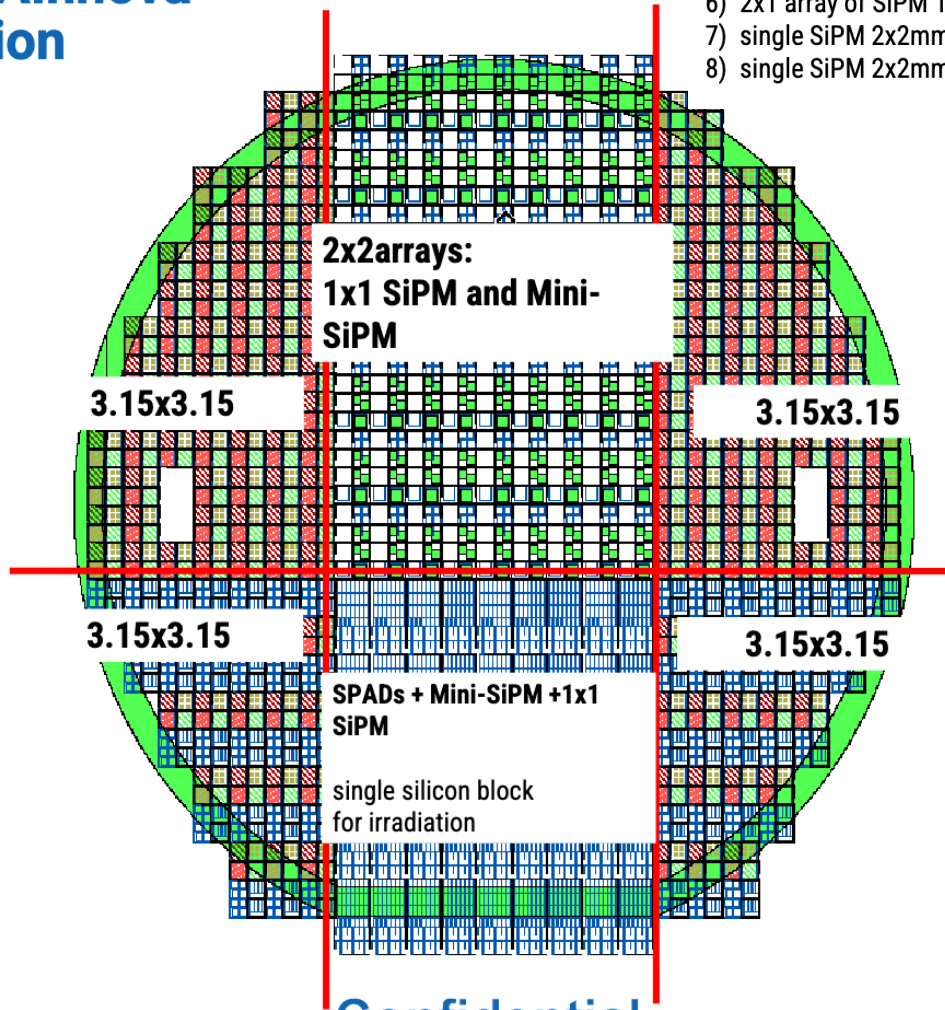
# AIDAInnova

Report Maria Ruzzarin (FBK) 3/6/2024

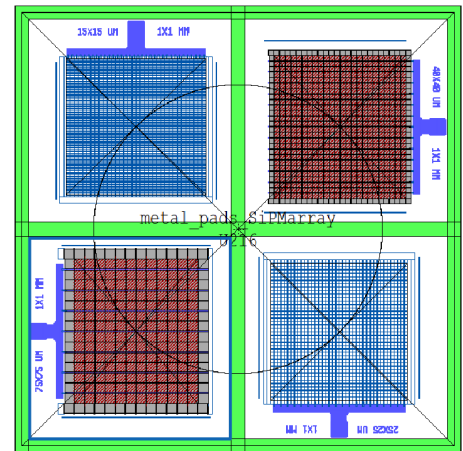
## NUV-HD for AIDAInnova Wafer composition

### Variants of 2x2 arrays:

- 1) 2x2 array of SiPM 1x1mm<sup>2</sup> with 15um-25um-40um-75um cell size
- 2) 2x2 array of SiPM 0.75x0.75mm<sup>2</sup> with 15um-25um-40um-75um cell size
- 3) 2x2 array of SiPM 0.5x0.5mm<sup>2</sup> with 15um-25um-40um-75um cell size
- 4) 2x2 array of SiPM 0.25x0.25mm<sup>2</sup> with 15um-25um-40um-75um cell size
- 5) 2x1 array of SiPM 1.5x1.5mm<sup>2</sup> with 15um+25um cell size
- 6) 2x1 array of SiPM 1.5x1.5mm<sup>2</sup> with 40um+75um cell size
- 7) single SiPM 2x2mm<sup>2</sup> with 15um cell size
- 8) single SiPM 2x2mm<sup>2</sup> with 40um cell size



Chip size 3.15x3.15mm<sup>2</sup>.  
The 2x2 array variants  
can be sub-singulated in  
4 individual pieces of  
1.57x1.57mm<sup>2</sup>



Confidential



# DMnet

Last annual meeting (the project will end in March 2025):

IBS Science and Culture Center, Daejeon, Korea from September 5th to 7th , 2024

<https://indico.ibs.re.kr/event/664/>

# Shifts

Name	Score/Due	Fraction
Hawaii	80.50 / 71.13	113%
KEK	0.00 / 8.89	0%
Ljubljana(Uni-LJ)	10.00 / 44.45	22%
Nagoya	102.50 / 62.24	164%
Padova	23.50 / 58.27	40%
Torino	31.50 / 35.56	88%
Cincinnati	107.50 / 84.95	126%
IIT-Hyderabad	75.50 / 71.13	106%
Pittsburgh	16.00 / 49.38	32%

TOP a+b  
40%

Nagoya	73.69 / 20.64	357%
Napoli	38.81 / 22.78	170%
Niigata	25.14 / 14.98	167%
Padova	7.23 / 10.67	67%

DP + Capitan + Navigator  
67%