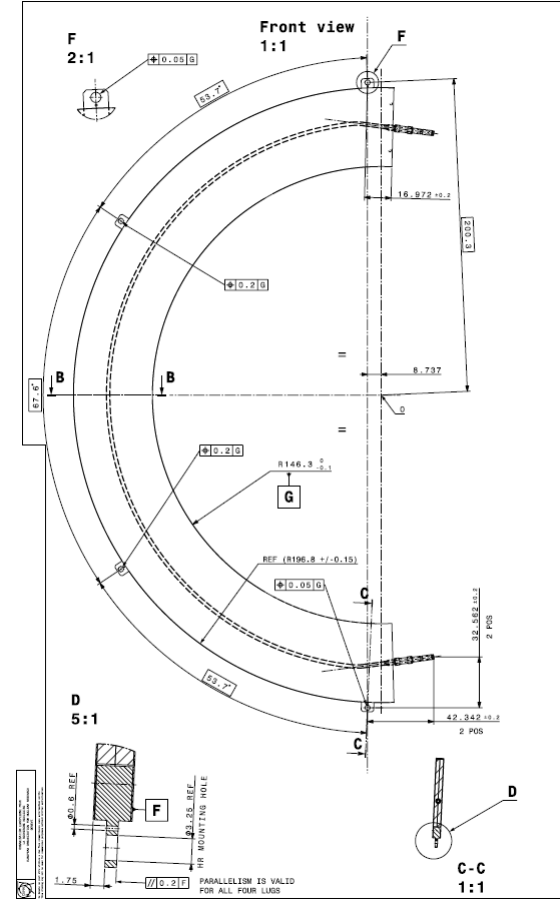
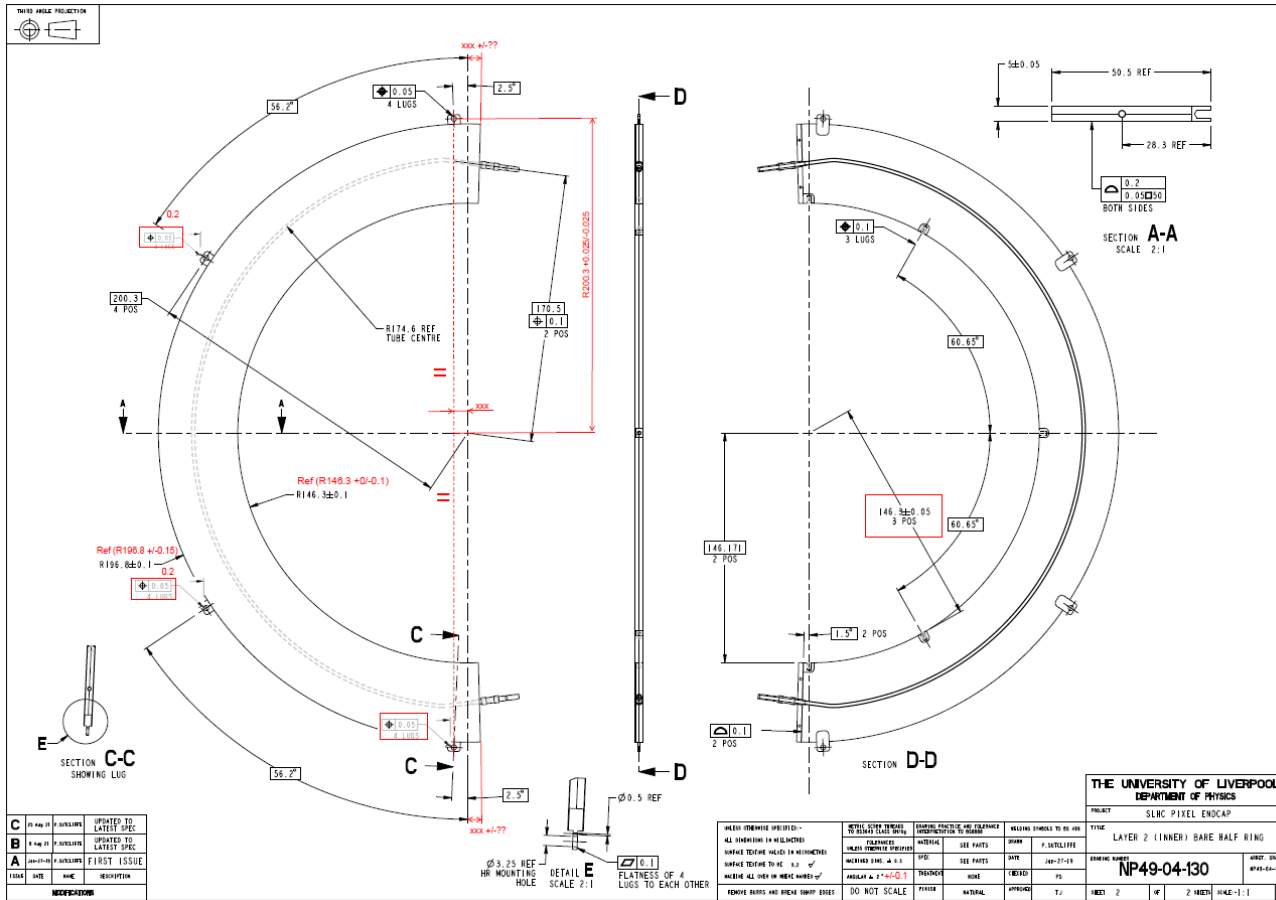

Bare Half Ring Drawings Status

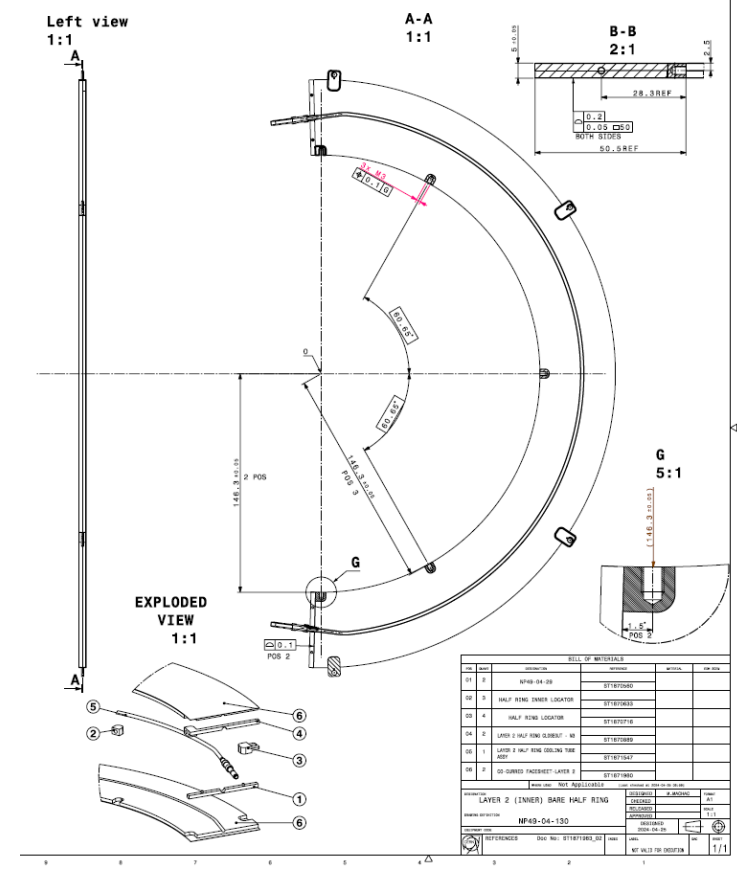
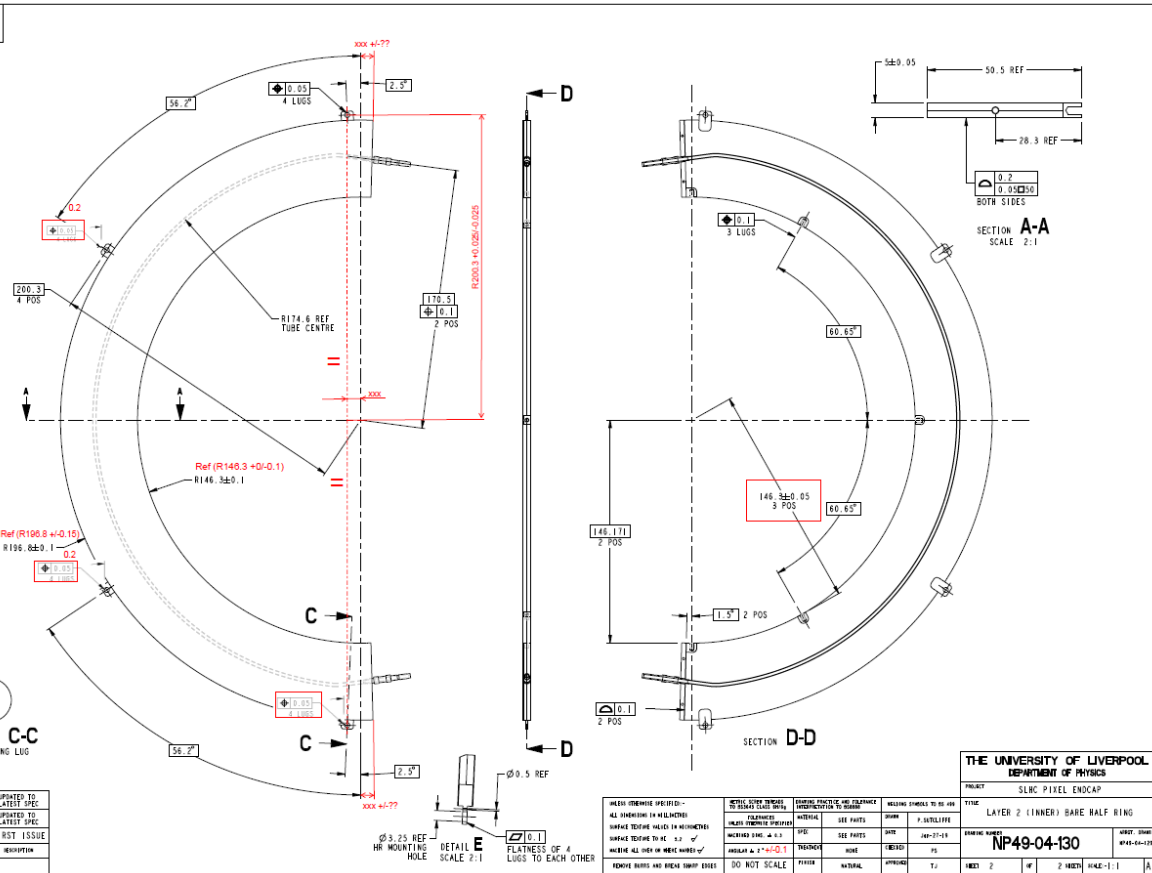
Martin Machač

07 May 2024

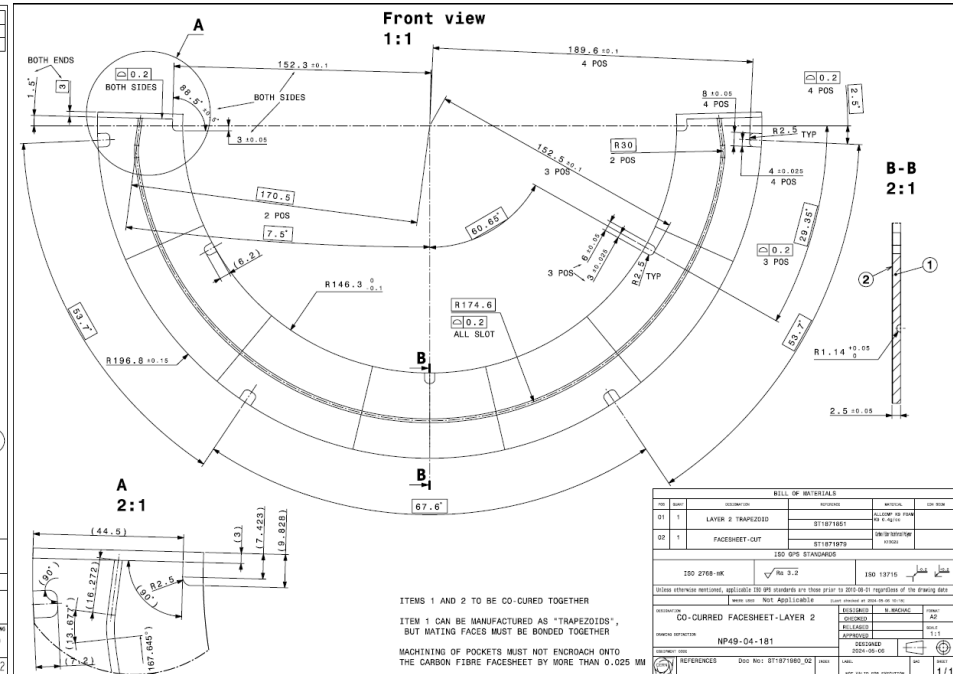
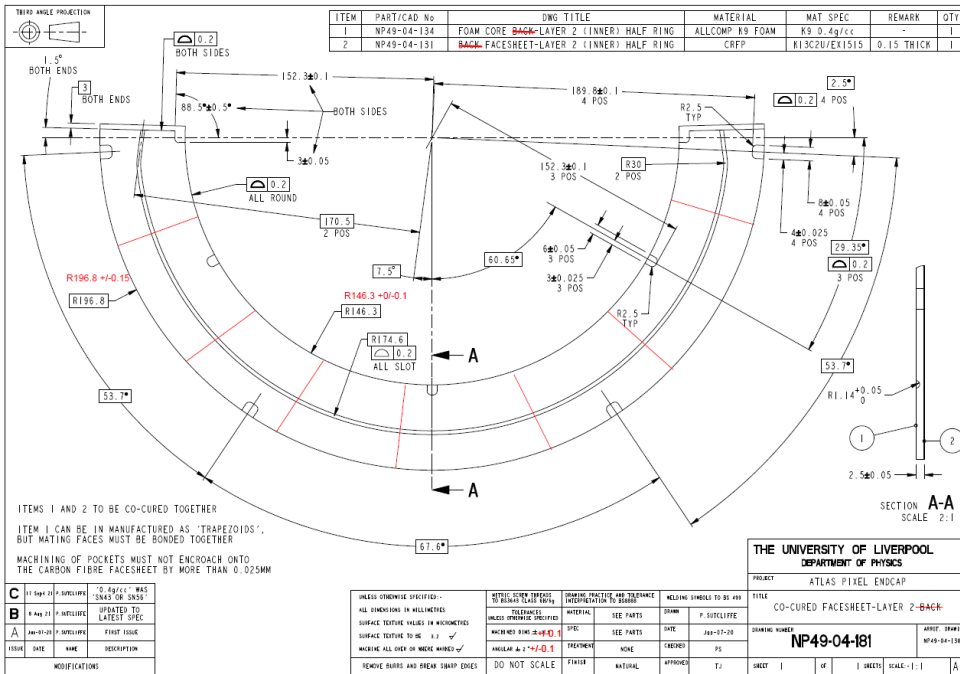
Layer 2 bare half ring assembly



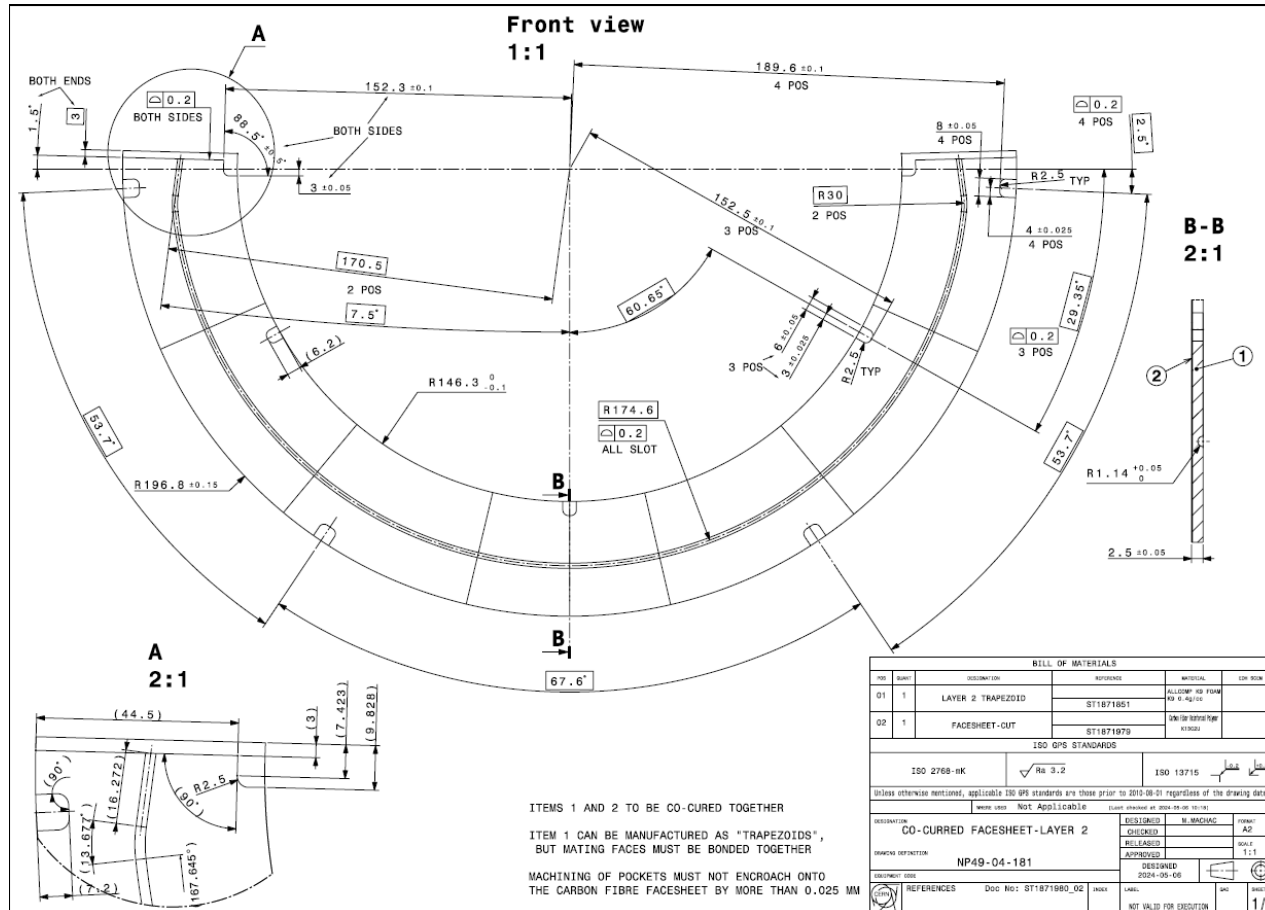
Layer 2 bare half ring assembly



Layer 2 co-cured facesheet



Layer 2 co-cured facesheet



Layer 2 cooling tube

| | | | | | |
|--------------------------------|-------------|---|--|-------------------------------------|--|
| G | TDC-000-802 | COPYRIGHT IN THIS WORK IS VESTED IN CERAMIC SEALS LTD. AND THE DOCUMENT IS ISSUED IN CONFIDENCE FOR THE PURPOSE ONLY FOR WHICH IT IS SUPPLIED. IT MUST NOT BE REPRODUCED IN WHOLE OR IN PART OR USED FOR TENDERING OR MANUFACTURING PURPOSES EXCEPT UNDER AN AGREEMENT OR WITH THE CONSENT IN WRITING OF CERAMIC SEALS LTD. AND THEN ONLY ON THE CONDITION THAT THIS NOTICE IS INCLUDED IN ANY SUCH REPRODUCTION. | Ceramic Seals LIMITED Westwood Industrial Estate Arkwright Street, Oldham OL9 9LZ Tel: +44(0)161 627 2353 Email: admin@ceramicseals.co.uk | | EDGES OF UNDEFINED SHAPE BS ISO 15715 |
| | DRAWING No. | | | | |
| REMOVE ALL BURRS & SHARP EDGES | | DO NOT SCALE | IF IN DOUBT ASK | REPORT ERRORS TO THE DRAWING OFFICE | |

TEST SPECIFICATION:
LEAK RATE: 10^{-4} mbar litre sec⁻¹

ELECTRICAL TEST TO 2kV DC

BRAZE MATERIAL:
SILVER/COPPER

NOT CONTROLLED

DETAIL B - SCALE 3:1

DETAIL D - SCALE 3:1

DETAIL C - SCALE 3:1

97.6% ALUMINA CERAMIC
OUTSIDE $\phi 3.80/\phi 3.75$
INSIDE $\phi 2.05/\phi 1.95$
LENGTH 10.0

NOTES:
 ① DIMENSIONS MARKED * ARE TAKEN FROM CERAMIC FACE.
 ② DIMENSIONS MARKED ** ARE TO RADII INTERSECT.

WAS 03-06190 SIMILAR TO TDC-000-797

A-A 1:1

B 20:1

| BILL OF MATERIALS | | | | REV | DATE |
|--|-------------|-----------------------------------|------|----------|------|
| QTY | DESCRIPTION | REVISION | DATE | BY | CHK |
| 001 | 1 | COOLING TUBE LAYER 2 (INNER HALF) | | | |
| | | FINE | | BTB/1105 | |
| 002 | 2 | TUBING TO CERAMIC ISOLATOR | | | |
| | | HEAT | | BTB/1106 | |
| <small> DRAWN BY: NOT APPLICABLE CHECKED BY: NOT APPLICABLE DATE OF CHECK: NOT APPLICABLE APPROVED BY: NOT APPLICABLE DATE OF APPROVAL: NOT APPLICABLE DRAWING No. NP49-04-154 ISSUE No. 001 DATE OF ISSUE: 2004-08-08 REFERENCE: DIM. REF: BTB/1547_00 NOT FOR SALE FOR DESIGN: 1/1 </small> | | | | | |

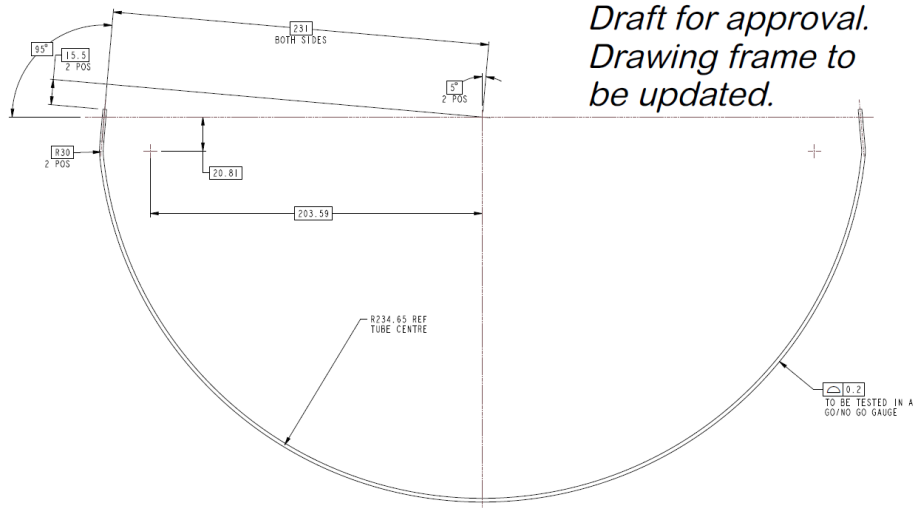
D2.275

| | | | | | | | | | |
|--|--|--|--------------------------------------|--|------|-------------|--------------------------------------|-----|----------|
| 0.4 SURFACES OR BETTER TO BE FREE FROM SCRATCHES OR OTHER DAMAGE | | | MATERIAL: TITANIUM CP2 OR AS STATED | | ITEM | DESCRIPTION | PART No. | QTY | MATERIAL |
| DIMENSIONS MM | | | TOLERANCES UNLESS OTHERWISE STATED:- | | DRN. | RTP | TITLE: | | A6 |
| | | | DIMENSIONAL | | | | TITANIUM TO CERAMIC ISOLATOR - SHORT | | |
| | | | GEOMETRICAL | | | | CUSTOMER REF: DRAWING No. | | |
| | | | ANGULAR | | | | | | |
| | | | SURFACE FINISH | | | | | | |
| | | | PROTECTIVE FINISH: CLEAN | | | | | | |

M197-03



Layer 2 tube

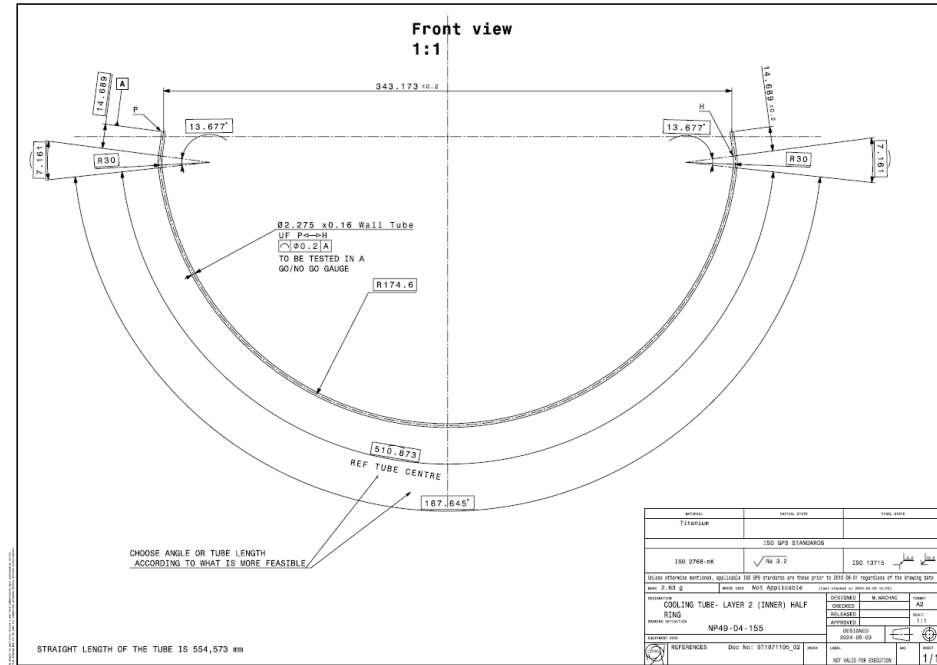


MANUFACTURE FROM Ø2.275 X 0.160 WALL TUBE

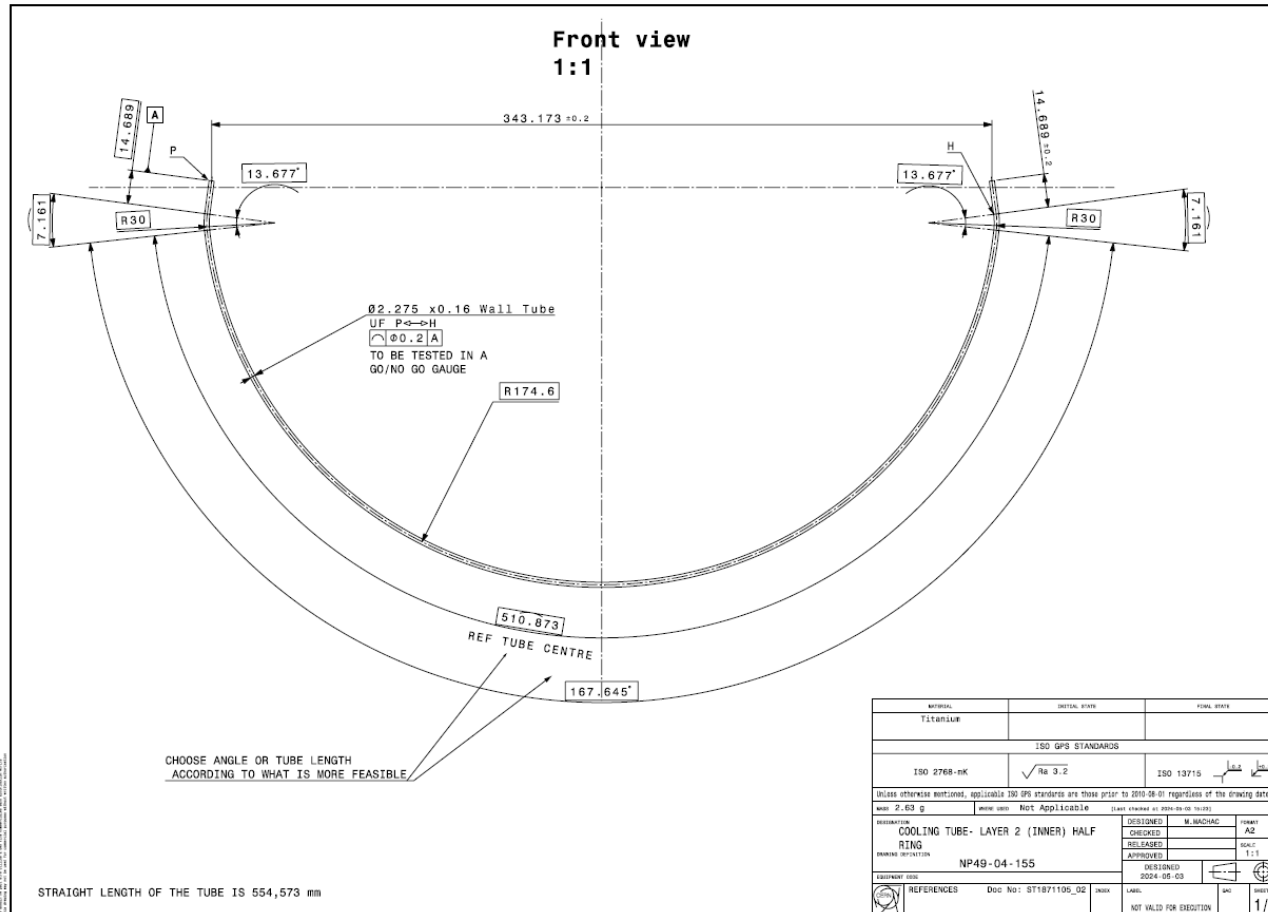
| | | |
|----------|-----------|-------------|
| 04-08-18 | LIVERPOOL | ENHET ISSUE |
|----------|-----------|-------------|

| | |
|-----|-----|
| 1.1 | 1.3 |
| 2* | |

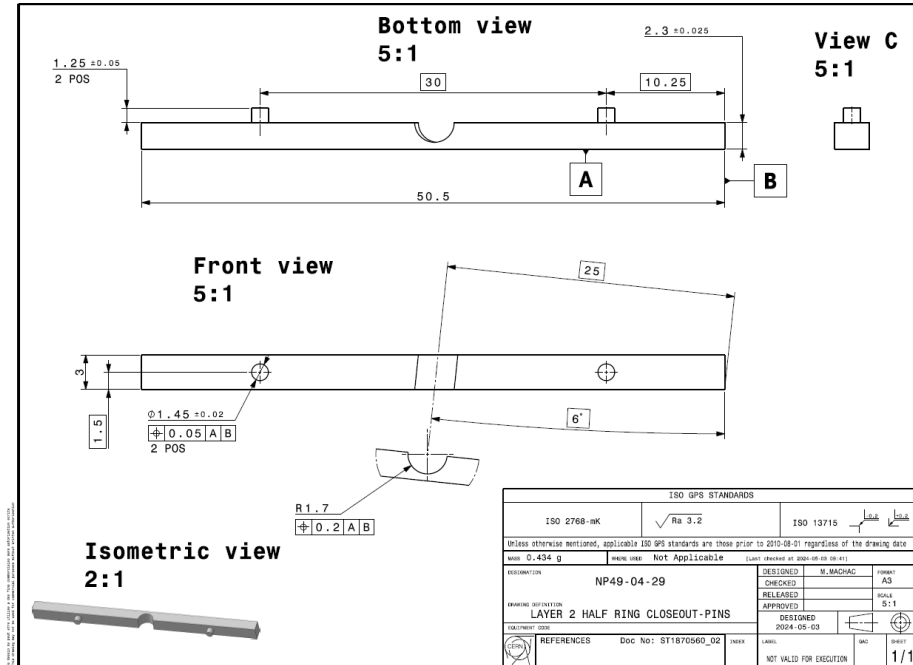
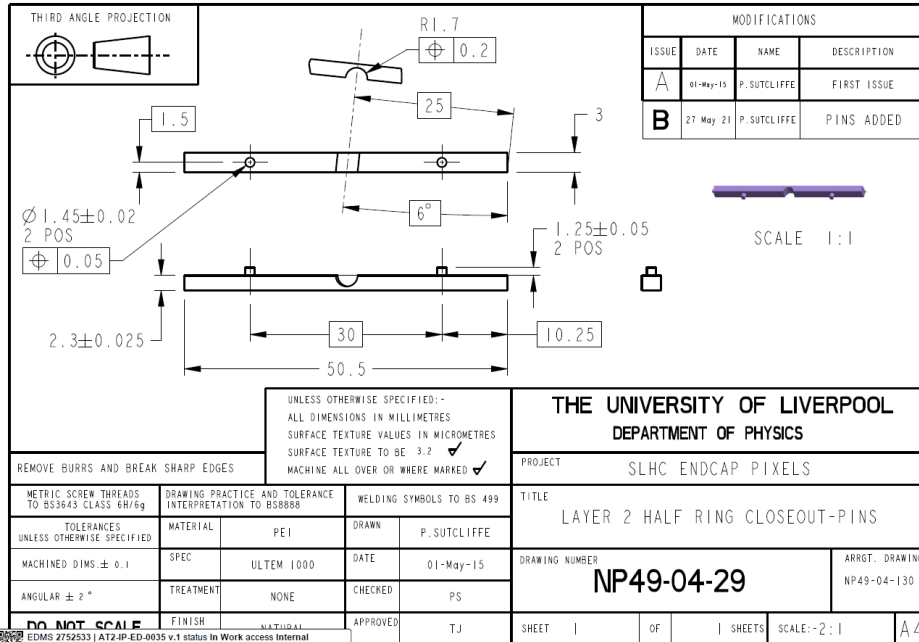
| SLHC PIXEL ENDCAP | | | | | | |
|---|-----------|-------------|---|-------------|----|--|
| COOLING TUBE-LAYER 3 (MIDDLE) HALF RING | | | | | | |
| TITANIUM | LIVERPOOL | | | | | |
| CP2 | 01-10-19 | | | | | |
| NONE | AL | | | | | |
| NATURAL | TJ | I | I | 1:1 | A2 | |
| | | NP49-04-155 | | 8849 01-156 | | |



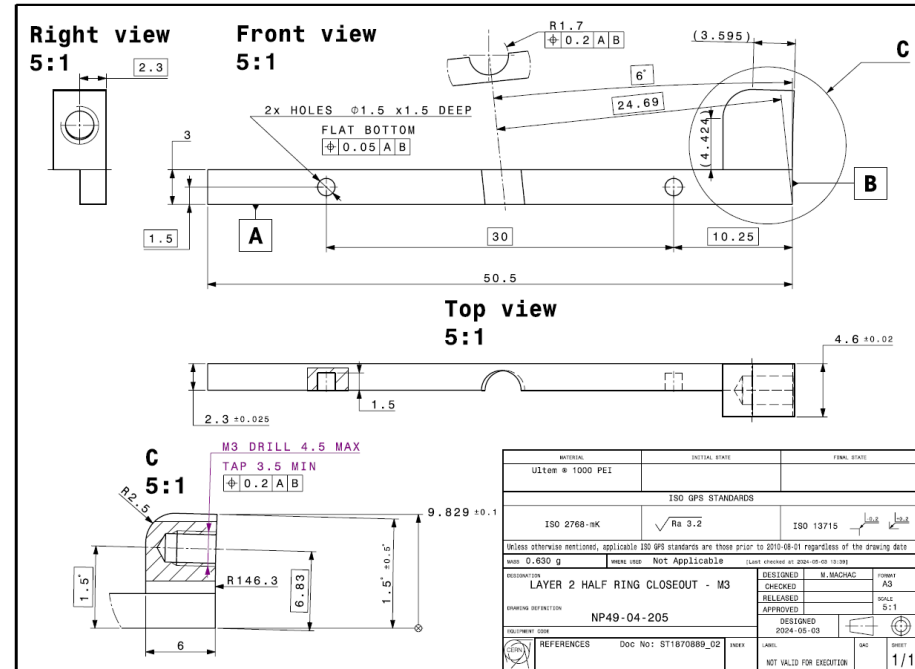
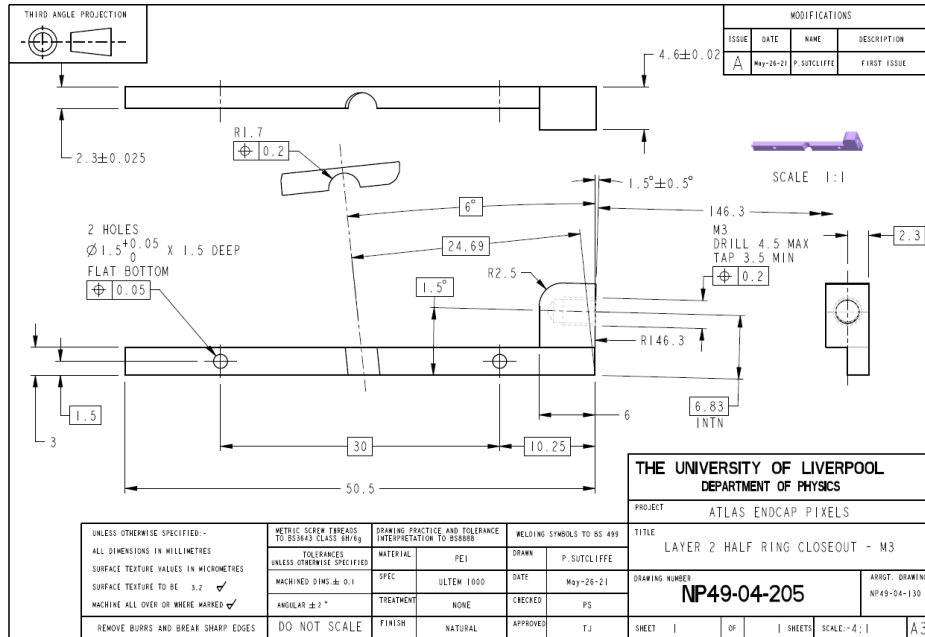
Layer 2 tube



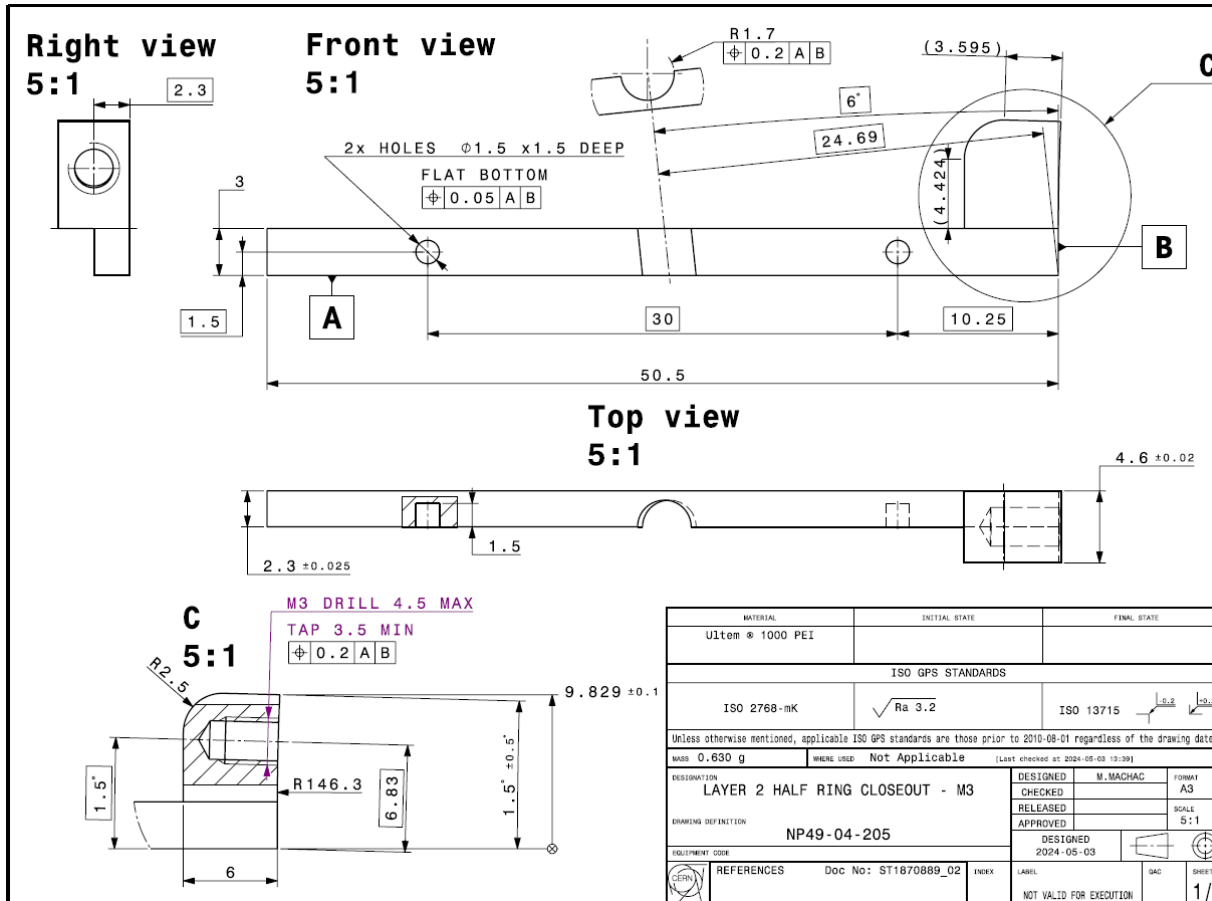
Layer 2 closeout with pins



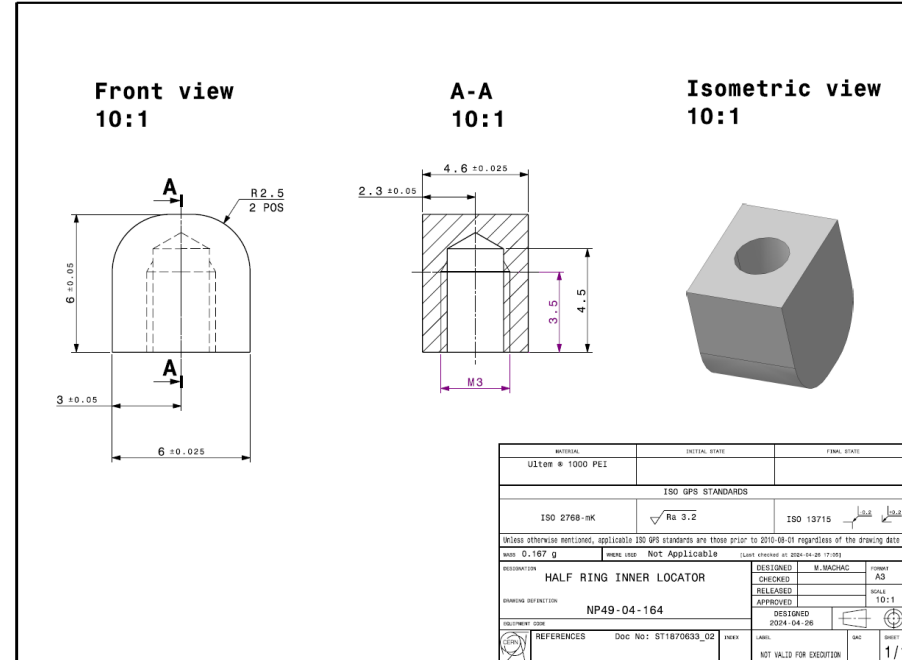
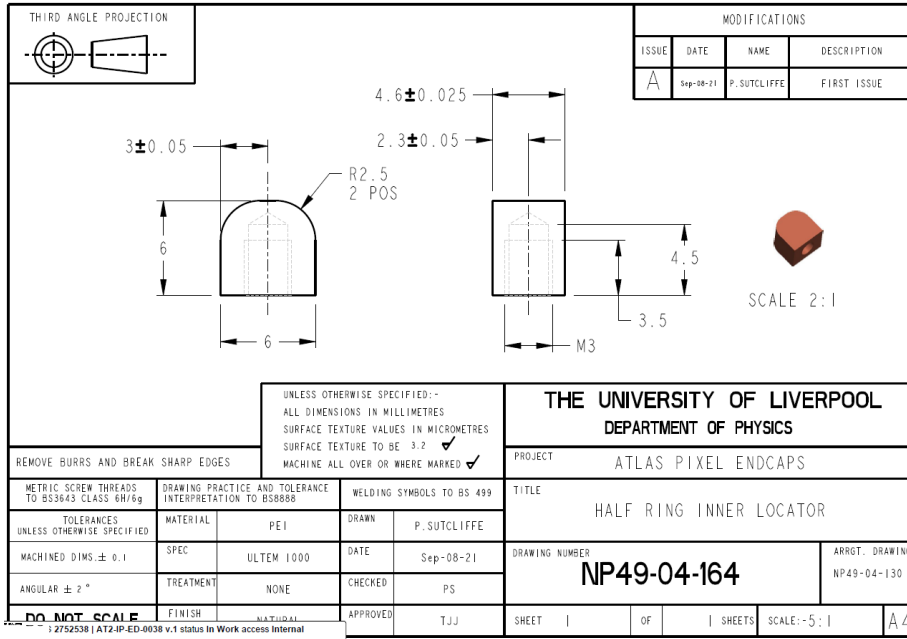
Layer 2 closeout with holes



Layer 2 closeout with holes



Layer 2 inner locator



Layer 2 locator

