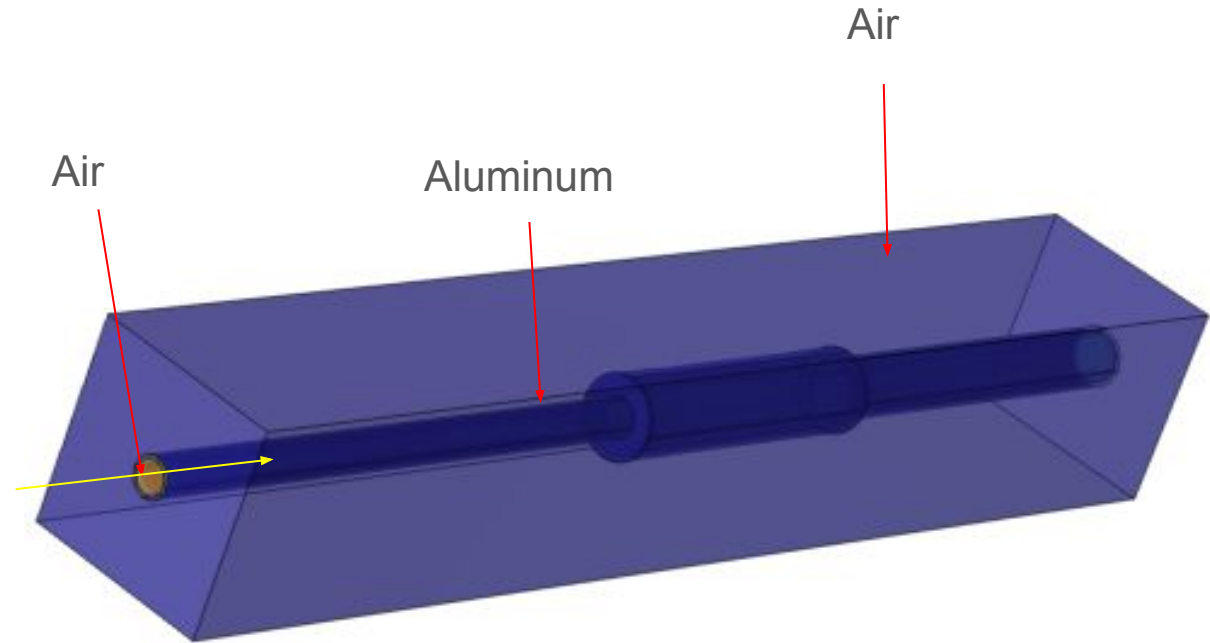


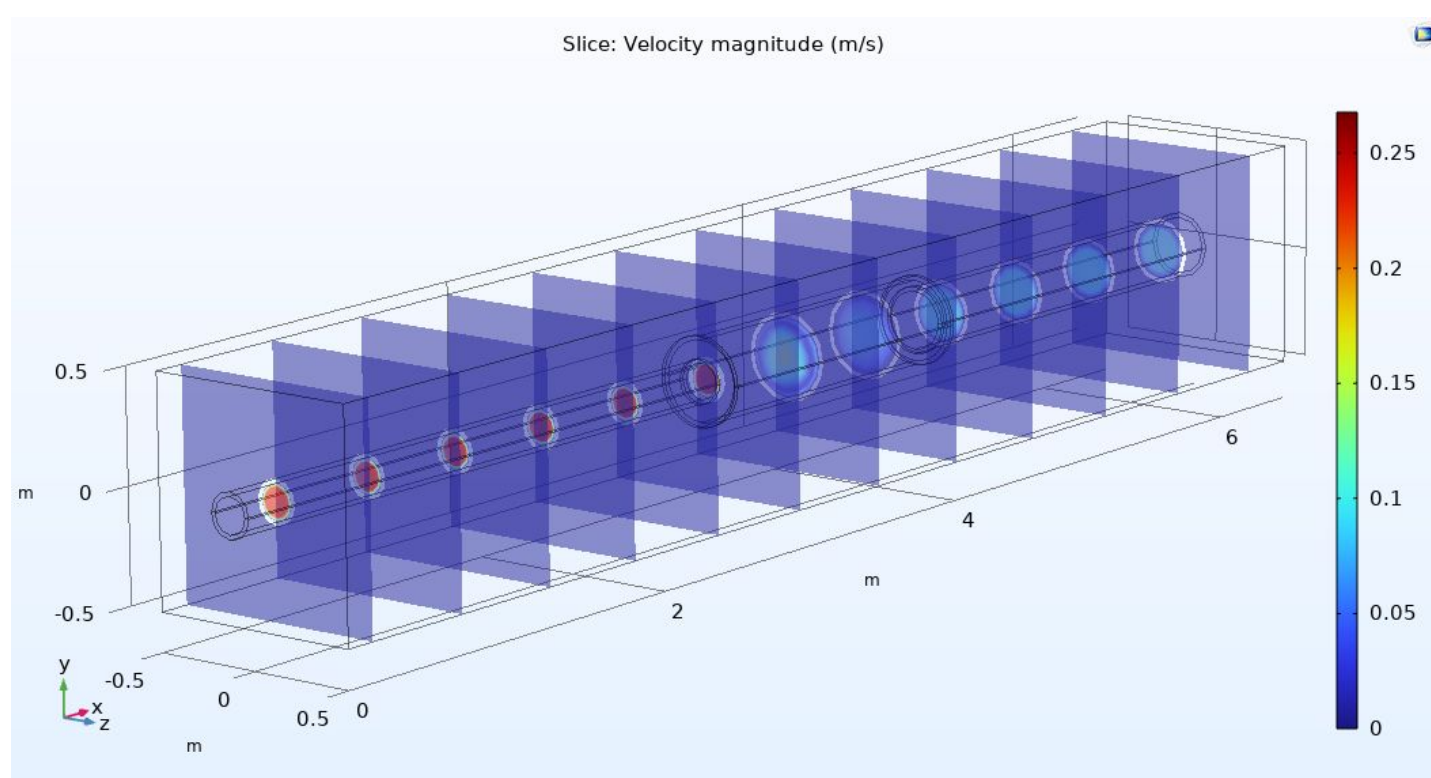
# FLUX SYSTEM

Simple system of coaxial cylinders with air flux at 0.2 m/s

Using Laminar Flow Interface



Slice plot of velocity:

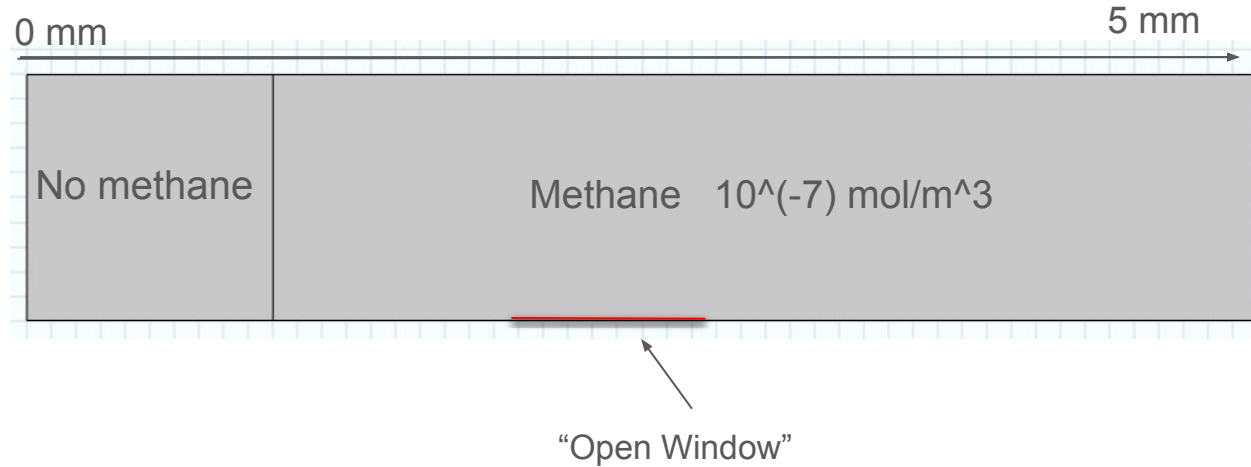


We still have problem with the simulation of Heat transfer

# DIFFUSION SYSTEM

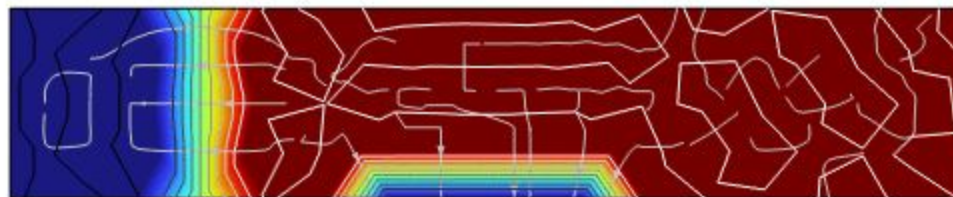
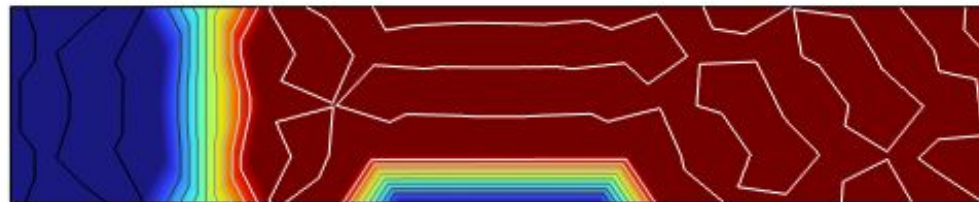
Starting with 2D simulation to get used to the Transfer of diluted  
Species Interface

Simple simulation of methane  
diffusion

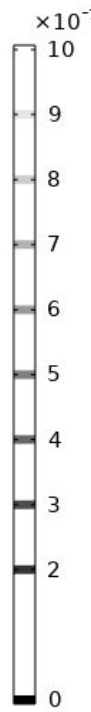
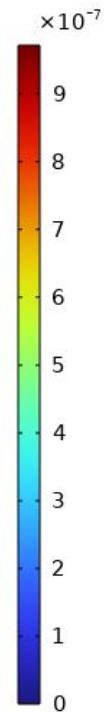
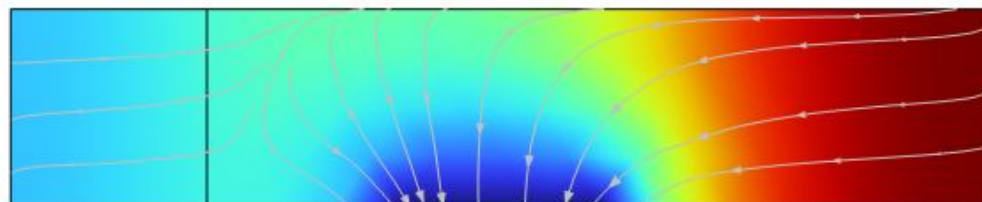


# CONCENTRATION PLOT

Start:



Finish:



## NEXT STEPS:

- Add mass source for methane
- Use Heat Transfer Interface
- 3D model for diffusion
- Make more complex geometry for the flow simulation