



U.S. DEPARTMENT OF  
**ENERGY**

Office of  
Science

## Mu2e News

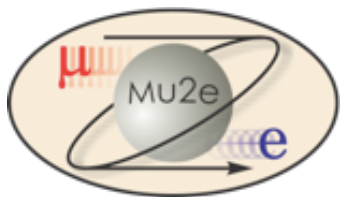
---

**Stefano Miscetti**

LNF INFN, Italy

**31 Jan 2024**

**Mu2e Italy Meeting**

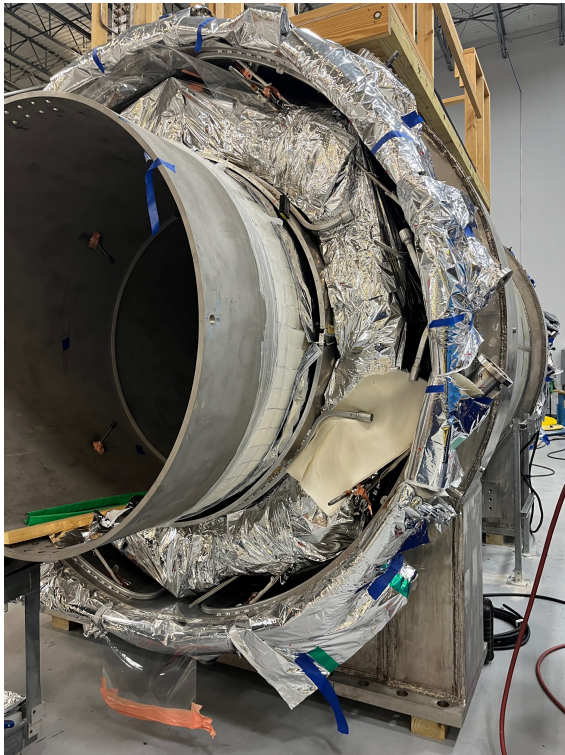


# Stato solenoidi – TS is almost done



✓ Installing collimator and then prepare for lifting  
Expected to be transported to Mu2e building end of February

# PS and DS : still “a long way to Tipperary”



PS .. Working on  
Chimney  
→ Delivery date  
**May 2024**

DS: coil winding is completed  
→ Installation of Coils 1-4, 5-6 OK  
→ Still drives Schedule + 2 months delay wrt IPR  
✓ Delivery date **End of October 2024**

# On-the-hall progresses

Very relevant step for startup of operations ... filling up Mu2e building also for Detectors

→ **Cable management system is done and installed**

Start routing cables on the trenches ...

South side first (DAQ+CALO), Center (Tracker), North (CALO,DAQ)

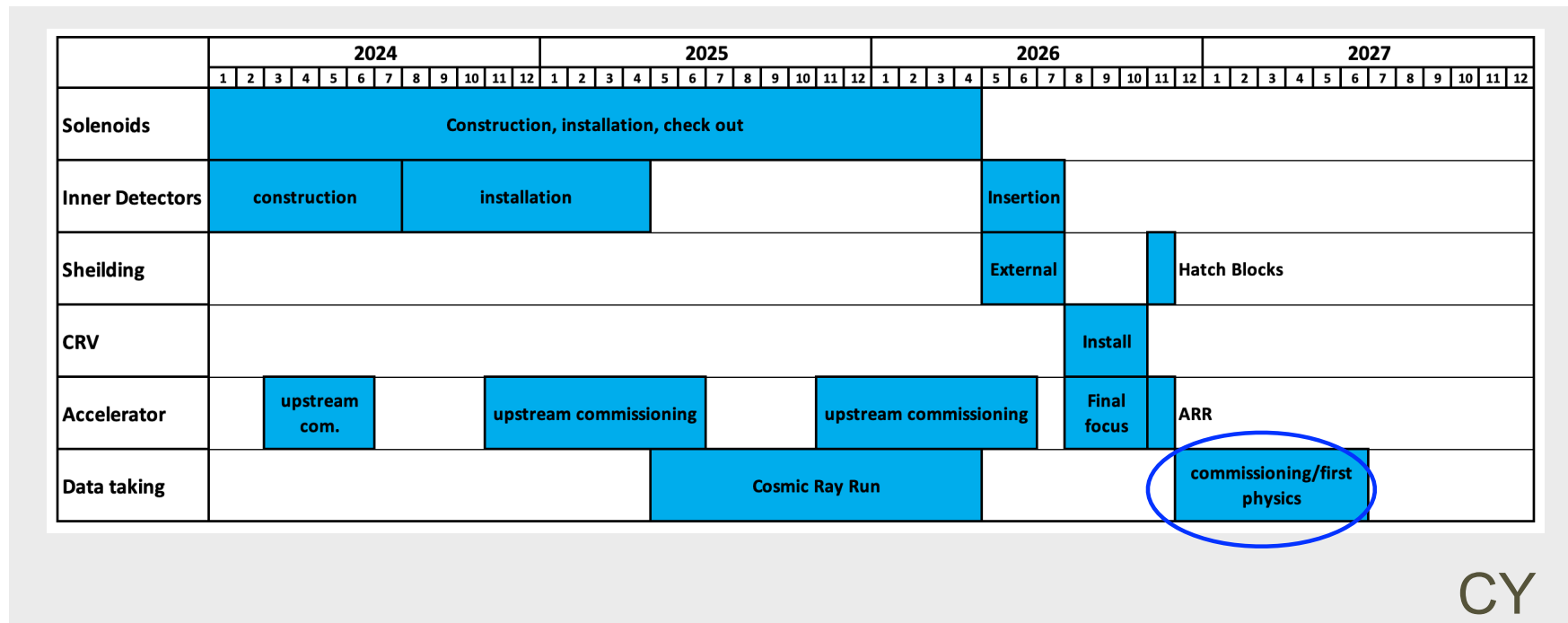
→ Next step once routing finished → installation of rails ... IFB procurement in progress



# New schedule presented at PAC – Jan 8-12

Beginning of January, two presentations at PAC

- Program Coordination – B.Casey: Mu2e status
- Co-Spokes - B. Bernstein – impact of beam delivery on Mu2e



- ✓ The meeting went pretty well.
- ✓ Comments during presentation were OK → **3 questions**
- ✓ recommendations back from PAC not yet received.

## 3 questions from PAC and replies (docdb# 47510)

---

- What is the Impact if the commissioning first physics run get shortened?  
Minimum Beam time to get reasonable physics before LS?

- 10% of Total # of POT is needed to make “a good physics case”
  - 3 months to commission the beam
  - 20 weeks (4-5 months) to get  $3.6E19$  POT
- We put 7 months in the schedule.

- Can the g-2 data be used to diagnose the extinction in the Recycler?

- Just barely. It looks like there are not all information just “plots”.

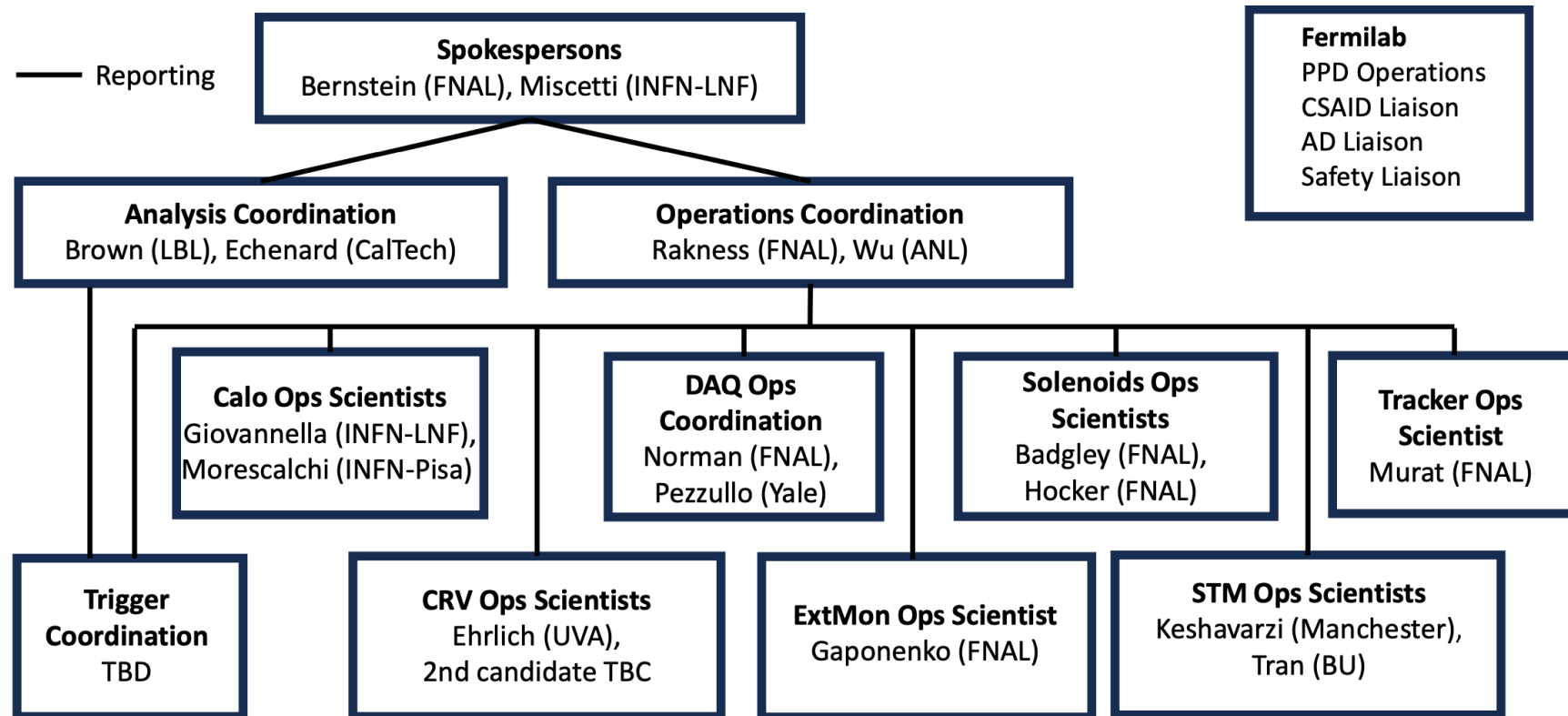
- Provide a measurement plan for diagnosing beam profile and extinction?

- Use the upstream ext.monitor done by quartz C detectors with its own DAQ system
- The system will be ready in time for when the beam will be available (March?)

Accelerator team proposed 3 beam studies to measure extinction:

1. As a function of Recycler beam intensity
2. As a function of 2.5 MHz recycler RF ramp rate
3. As a function of Recycler extraction and Delivery injection kickers

# ORG-chart news



- Weekly meeting of EEC started
- OPSCO have been populated, Weekly meeting started
- ANCO structure is almost ready →  
presentation next week @ weekly meeting  
Then start nominations and selections

# Next Mu2e meetings

---

## ☐ **Mu2e CM from 18 to 23 of March**

- ½-1 Day dedicated to OPS review preparation (not yet frozen)
- SW tutorials on Saturday

## ☐ **DOE IPR review on June (25-27)?? – FOR PROJECT**

- schedule & cost
- probably one detector report, short breakouts

## ☐ **B&R review for operations** → scale of \$\$\$ for operation 5 year plan

- under discussion ..
- Possibly end of July
- new OPS team will do it