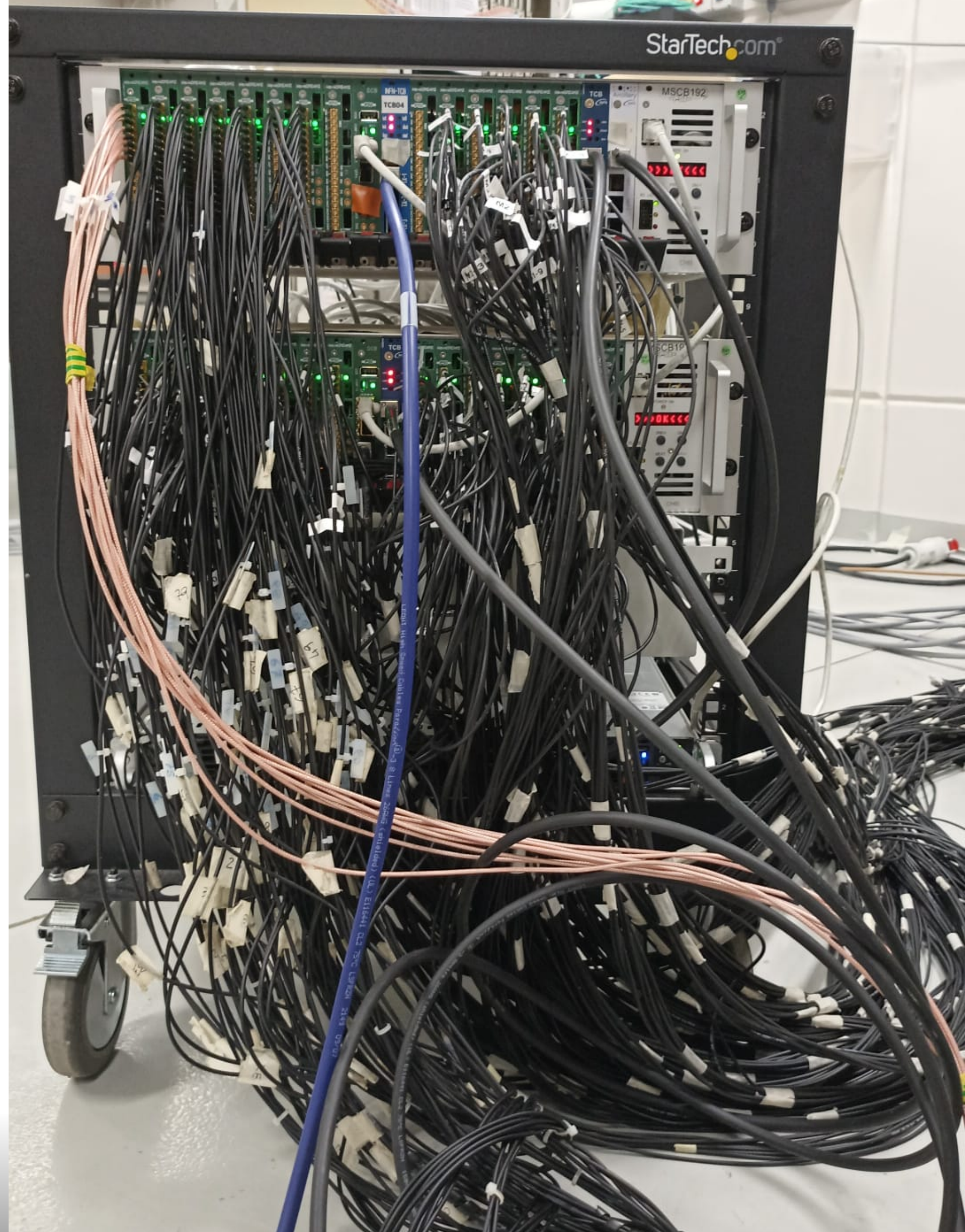


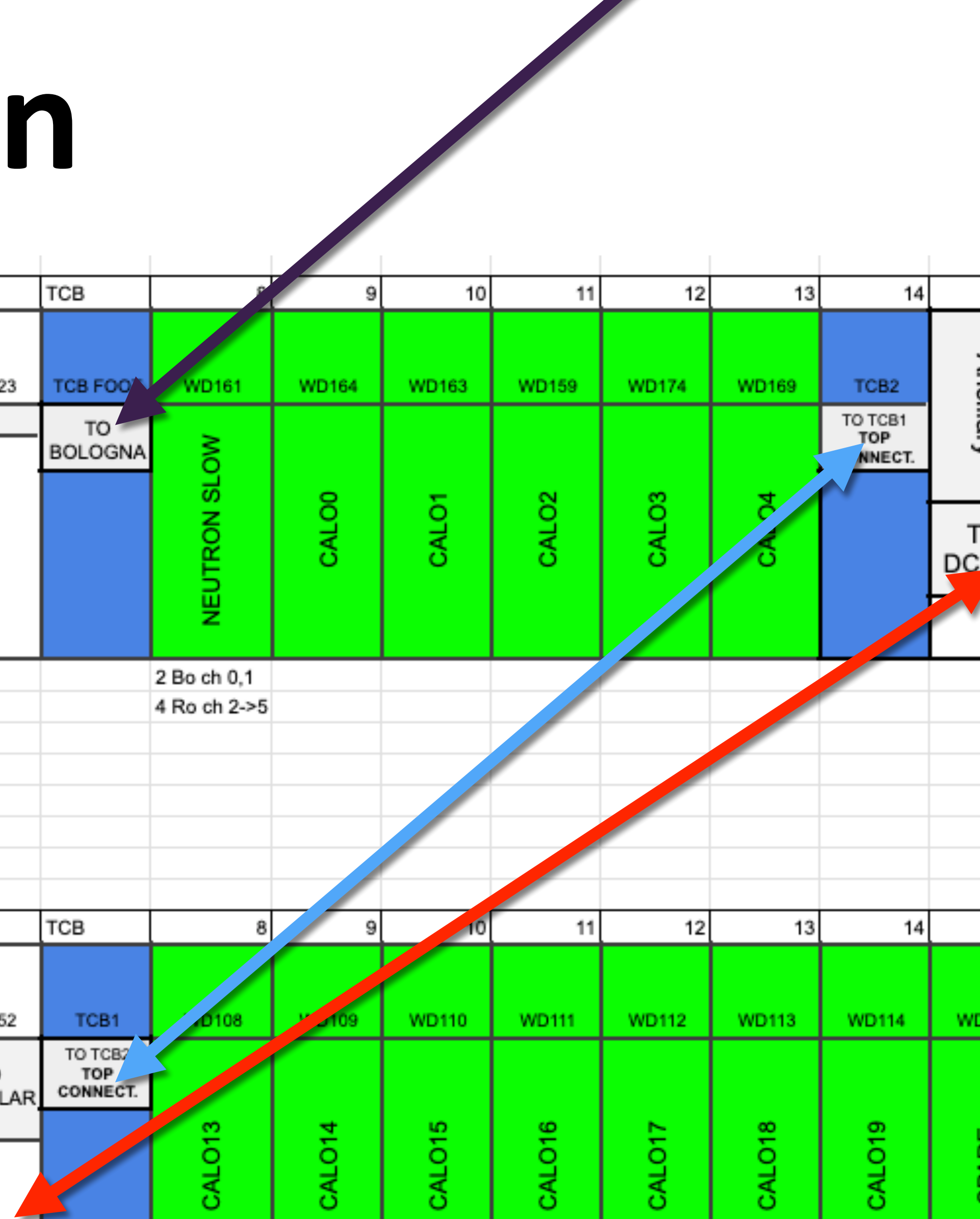
# WaveDAQ Trigger updates





# Channel association

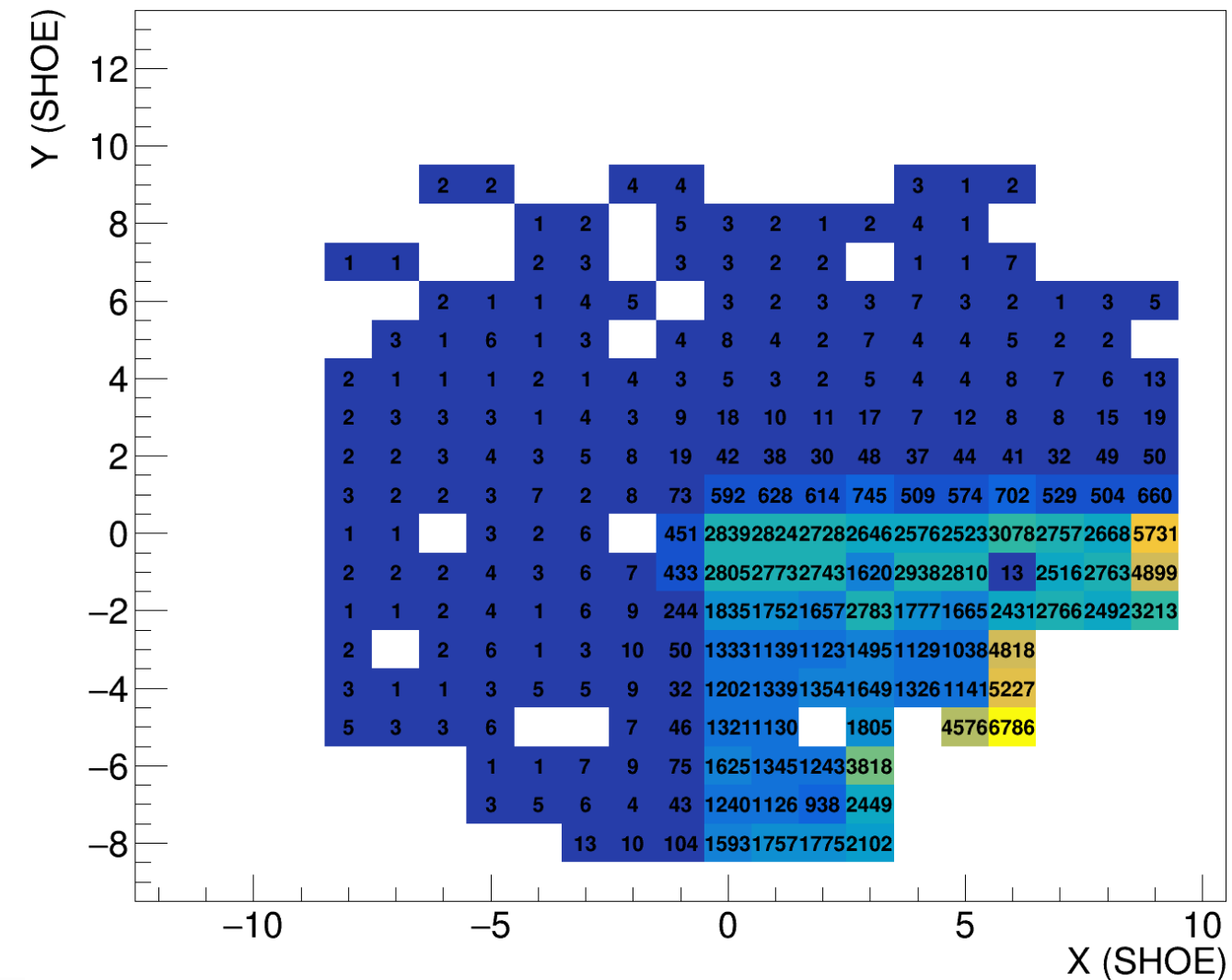
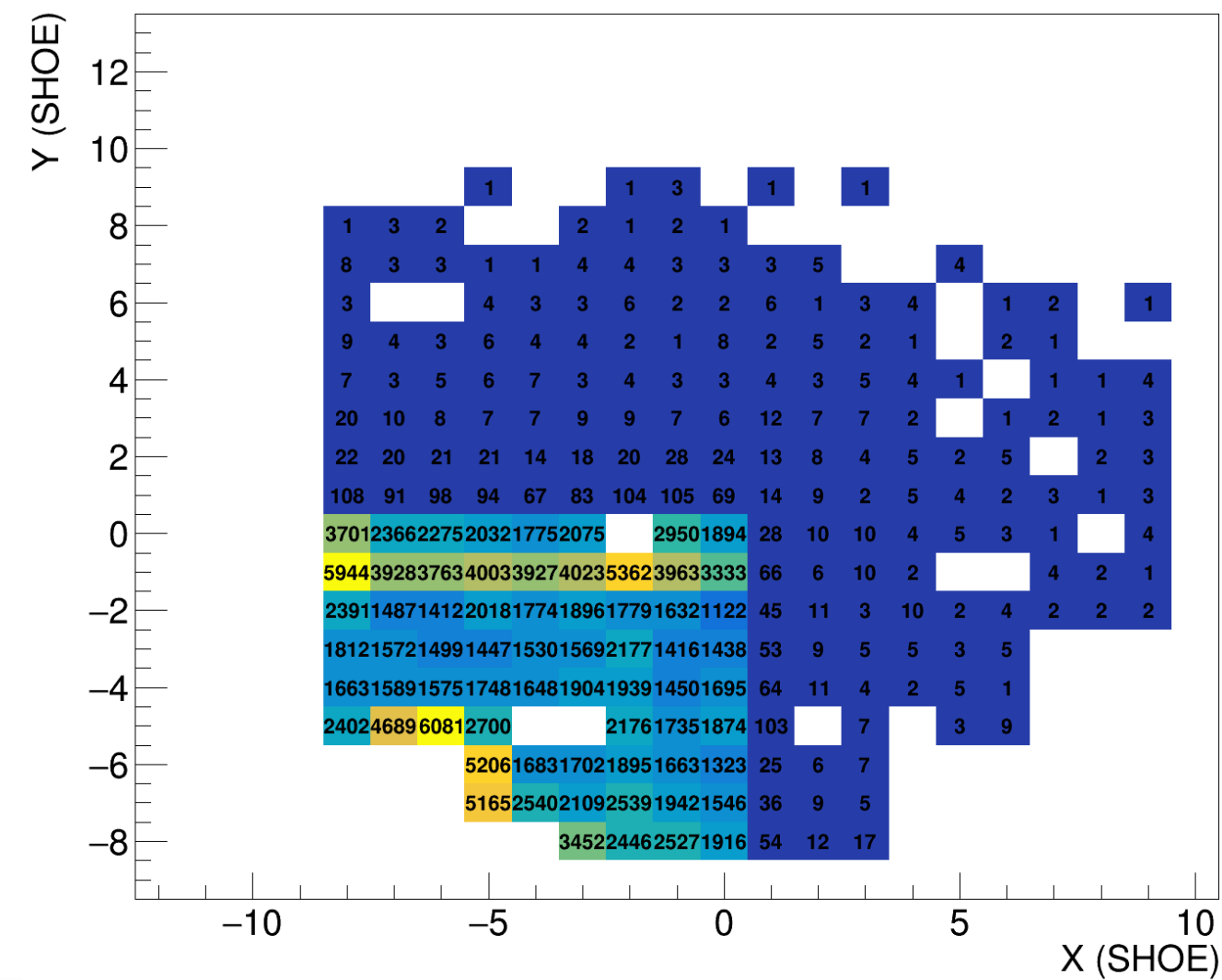
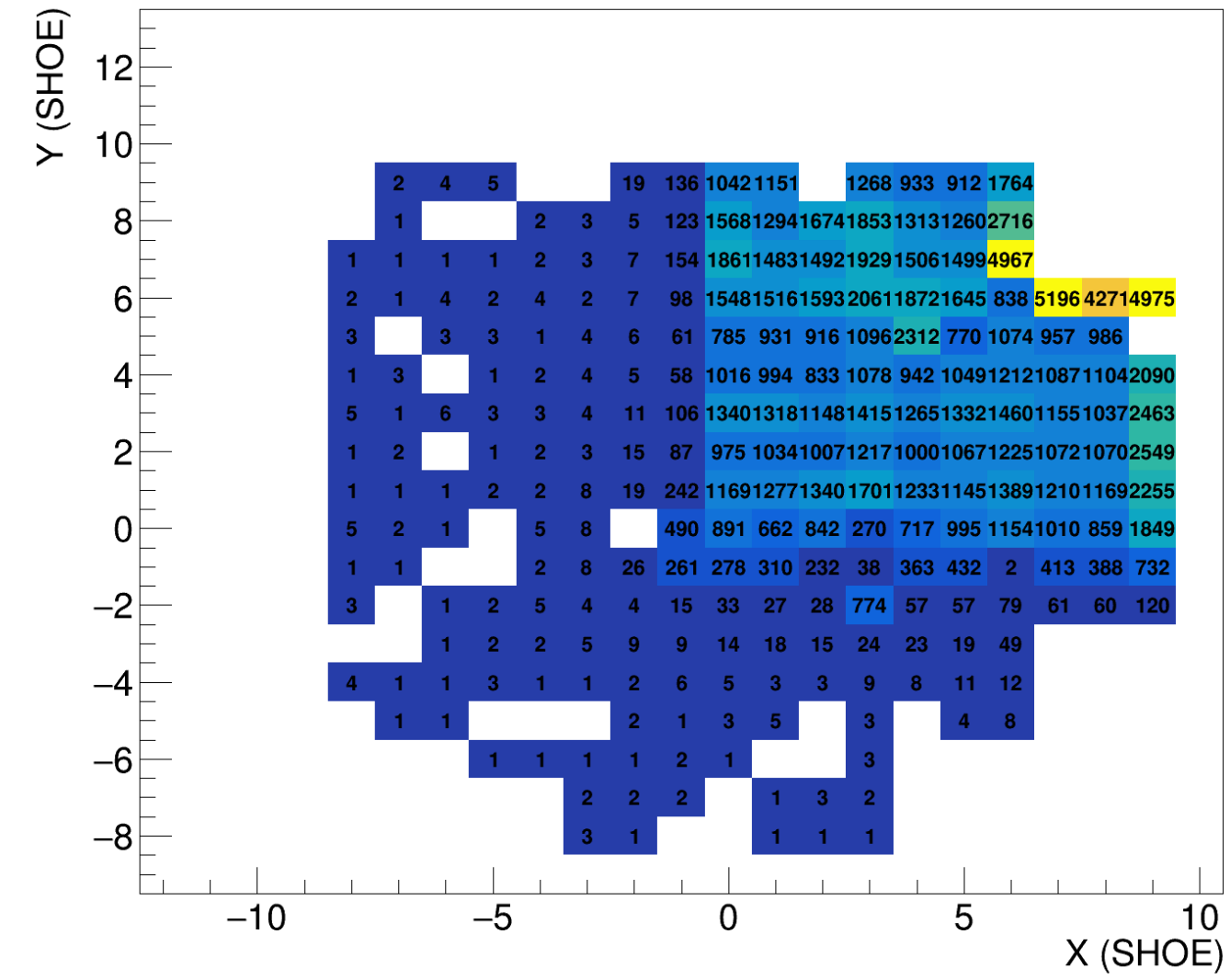
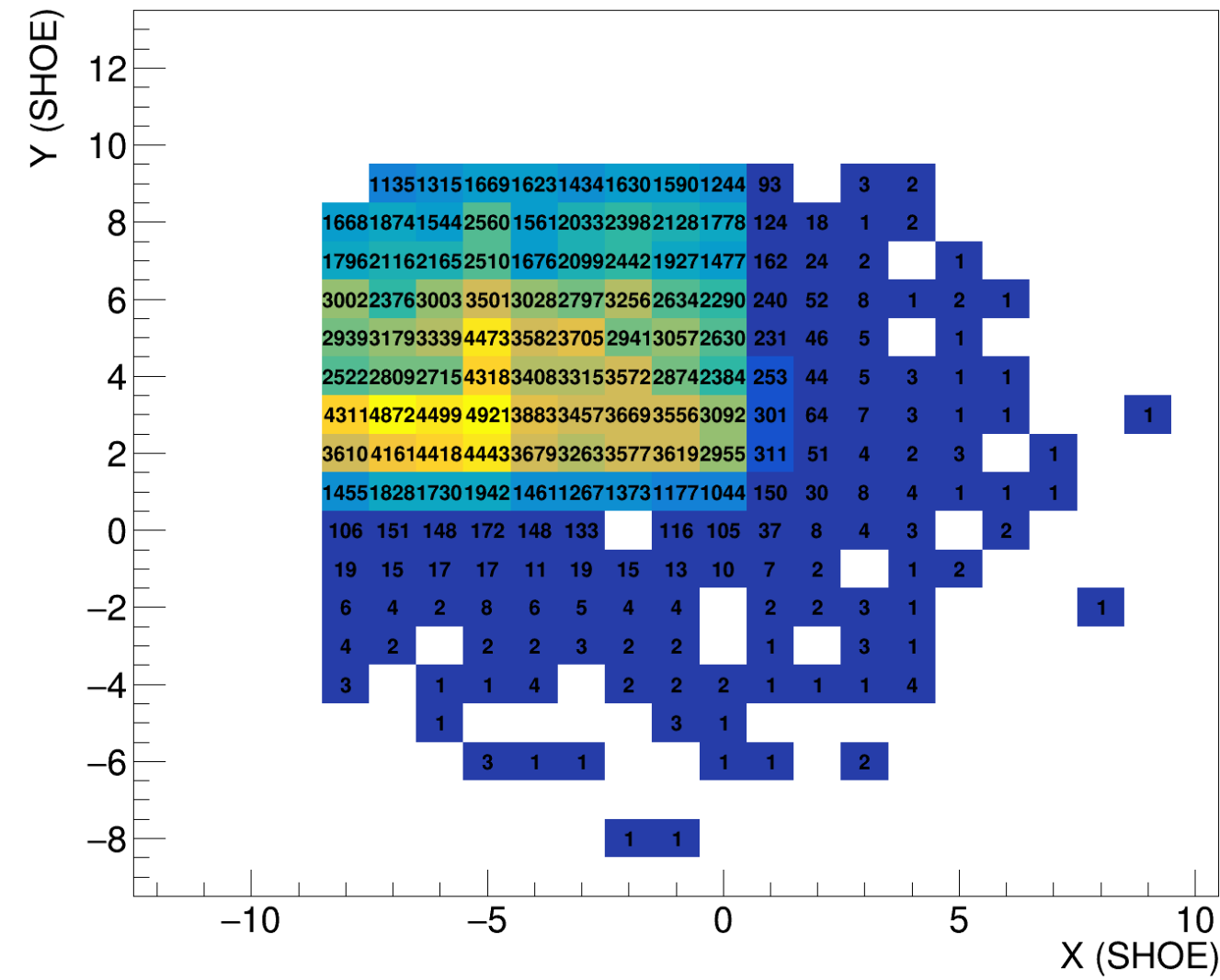
	0	1	2	3	4	5	6	7	DCB	TCB	8	9	10	11	12	13	14	15			
node association	WD27	WD165	WD170	WD167	WD168	WD158	WD166	WD160	DCB23	TCB FOO	WD161	WD164	WD163	WD159	WD174	WD169	TCB2	Ancillary	MSCB192		
	MARGARITA	TOFWALL0	TOFWALL1	TOFWALL2	TOFWALL3	TOFWALL4	TOFWALL5	NEUTRON SCINT		TO BOLOGNA	NEUTRON SLOW	CALO0	CALO1	CALO2	CALO3	CALO4	TO TCB1 TOP CONNECT.				
	TOFX	TOFX	TOFX/Y	TOFY	TOFY	TOFY	CentralBars 4 Bo ch 0->3 1 Ro ch4				2 Bo ch 0,1 4 Ro ch 2->5									TO DCB52	
node association	WD100	WD157	WD115	WD103	WD104	WD105	WD106	WD107	DCB52	TCB1	WD108	WD109	WD110	WD111	WD112	WD113	WD114	WD102	MSCB195		
	CALO5	CALO6	CALO7	CALO8	CALO9	CALO10	CALO11	CALO12		TO TCB2 TOP CONNECT.	CALO13	CALO14	CALO15	CALO16	CALO17	CALO18	CALO19	SPARE			
									TO ANCILLARY												



# Latest news - calo alone trigger

- Trigger number 30
  - *Global OR of all channels from both crates*
  - *any channel with individual threshold and mask as described in*
    - <https://docs.google.com/spreadsheets/d/1hk4Tdgfkv0YjdsjldSWQQZtwZSucif55sulnaugNLGw/edit#gid=439251397>
    - che “Configuration” tab for instructions, as for other detectors
    - *in case of doubts contact me so I can improve the page*

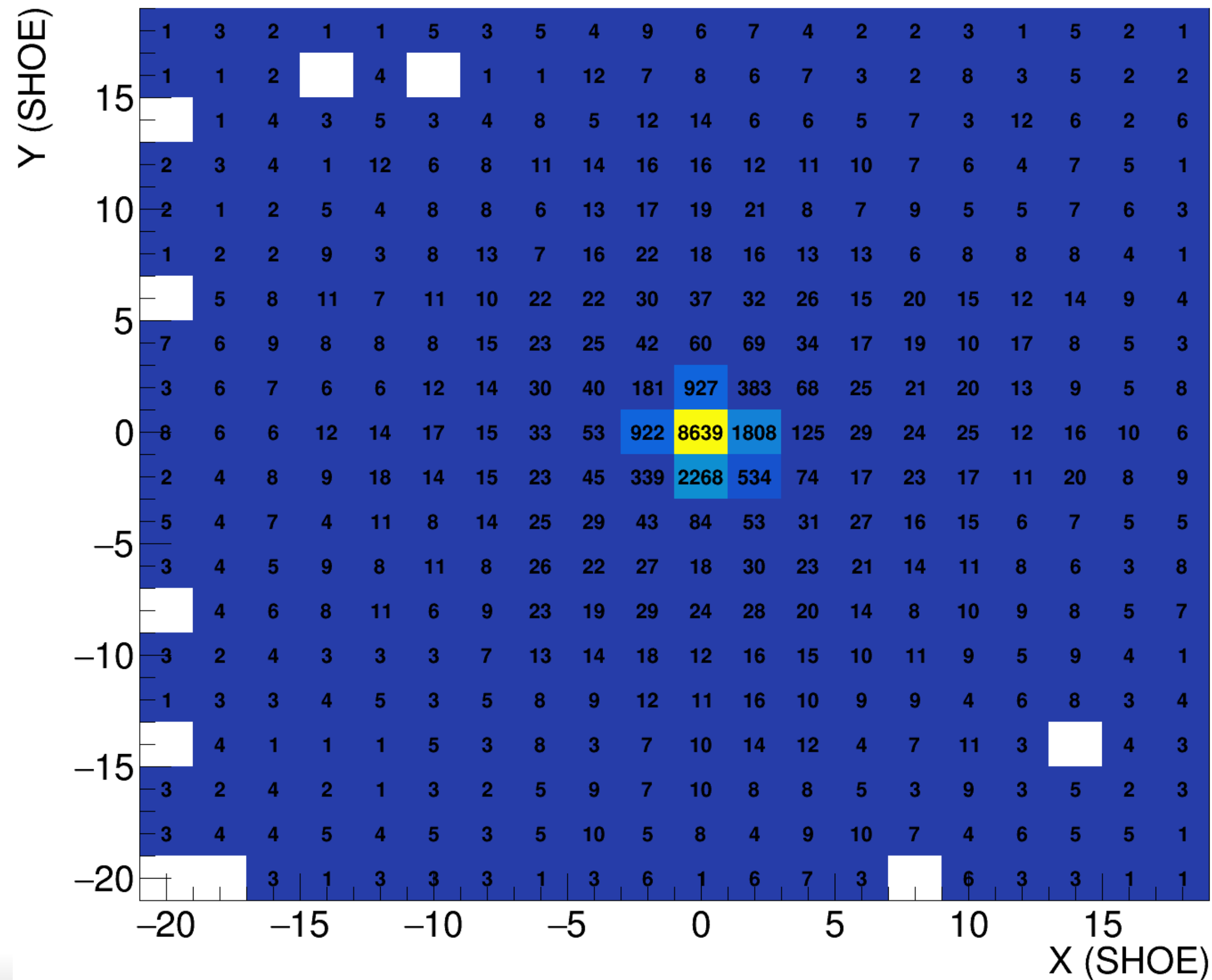
# Hit maps with calo alone trigger



# Latest news - “new” minimum bias

- Minimum bias available also at trigger number 0
  - *It was 40 before*
  - Same logic but highest priority in the trigger stack
  - *It was requested to have Minimum Bias trigger in the fragmentation runs as Minimum Bias only runs*
  - this has to be taken into account in analysis before and after 2023

# TW hit map



Minimum Bias events  
in fragmentation run

From first look  
at data distributions  
are fine



# Conclusions

- WaveDAQ deploy looks accomplished!
  - *No DAQ Issue in last data taking with the full readout of Start Counter + TofWall + Calorimeter (and in the past neutron detection devices)*
- Several triggers available
  - *Minimum Bias (Start Counter alone)*
  - *Tof Wall alone (and/or of bars)*
  - *Calorimeter Alone (or of all channels)*
  - *Fragmentation trigger*
  - *Auxiliary triggers for neutron measurements*