



Thursday Social Dinner



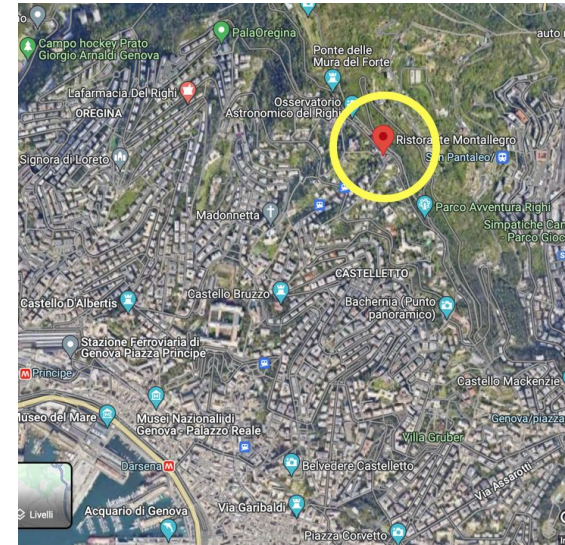
Università
di Genova

science
is
Scool
Cultural Association

RuleX

INFN
Istituto Nazionale di Fisica Nucleare

Conference Dinner: the mountains



Ristorante Montallegro, Thursday at 19:30



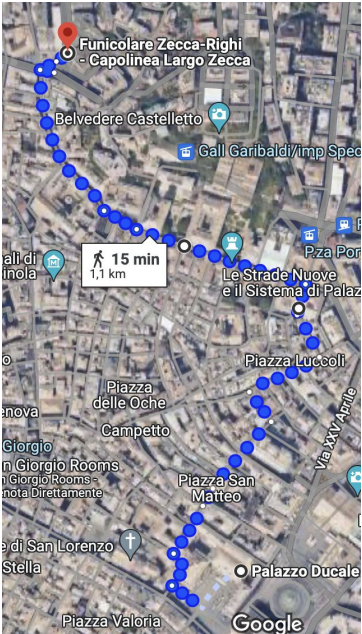
How to get to the restaurant Montallegro

- The best way to get to the restaurant is with the **funicolare Zecca-Righi**
- Google either “*Largo della Zecca*” or “*Funicolare Zecca Righi Capolinea*”
- It’s a 15 mins walk from Palazzo Ducale o a short bus ride (buses 18/20/34/35/36/40 from “*De Ferrari / Metr *” bus stop)
- If you walk, we suggest to go through *via Garibaldi* to admire the beautiful palaces
- Buy your ticket, get on the funicolare and get off at the final stop (Righi, ~12’ ride)
- The restaurant is called “*Montallegro*” just outside the station

Notes:

- 150 people should fit in just one go, but better to split to avoid overcrowding
- Enjoy the view from the top terrace at the final stop!

Funicolare Zecca - Righi



07:42 AMT

< AMT

FRI

L.go Zecca -> Righi

Timetable feriale of 01/08/2024

11:40	12:00	12:20	12:40	13:00
13:20	13:40	14:00	14:20	14:40
15:00	15:20	15:40	16:00	16:20
16:40	17:00	17:20	17:40	18:00
18:20	18:40	19:00	19:20	19:40
20:00	20:20	20:40	21:00	21:20

07:42 AMT

< AMT

FRI

Righi -> L.go Zecca

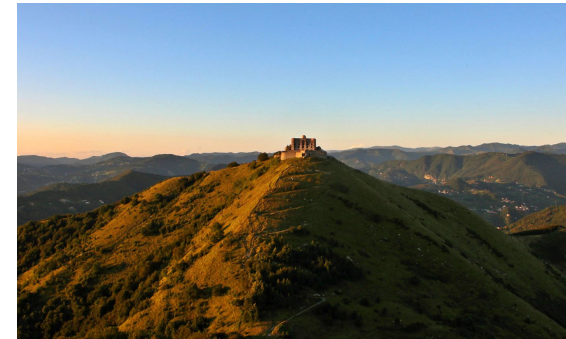
Timetable feriale of 31/07/2024

15:00	15:20	15:40	16:00	16:20
16:40	17:00	17:20	17:40	18:00
18:20	18:40	19:00	19:20	19:40
20:00	20:20	20:40	21:00	21:20
21:40	22:00	22:30	23:00	23:30
00:00				

Or roll down the hill

Alternative & extra routes

- You can split the travel in two
 - first take the “*Ascensore Castelletto Levante*” from **Piazza Portello**
 - enjoy the belvedere!
 - walk to the “*Stazione Carbonara*” stop of the funicolare **Zecca-Righi** (8’ walk)
 - join the others at the top
- You can enjoy a walk on the hillside before dining
 - reach Montallegro / Righi top station well in advance
 - walk uphill to the Peralto area (20/25’ walk)
 - enjoy the panorama or the trails in the Parco delle Mura
 - walk back downhill to ristorante Montallegro





Guided tour

- The tour guide Claudia Habich will meet you at the bottom of the main staircase (by the BOOST arrow sign) at 4:30pm
- She will be wearing a white t-shirt with blue stuff and an tourist guide badge