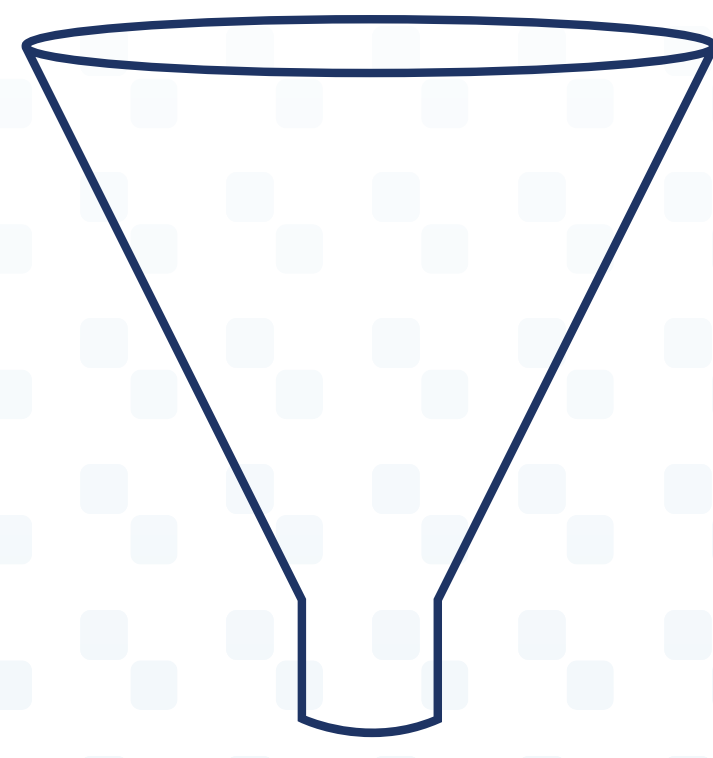


Data sources



Data aggregation



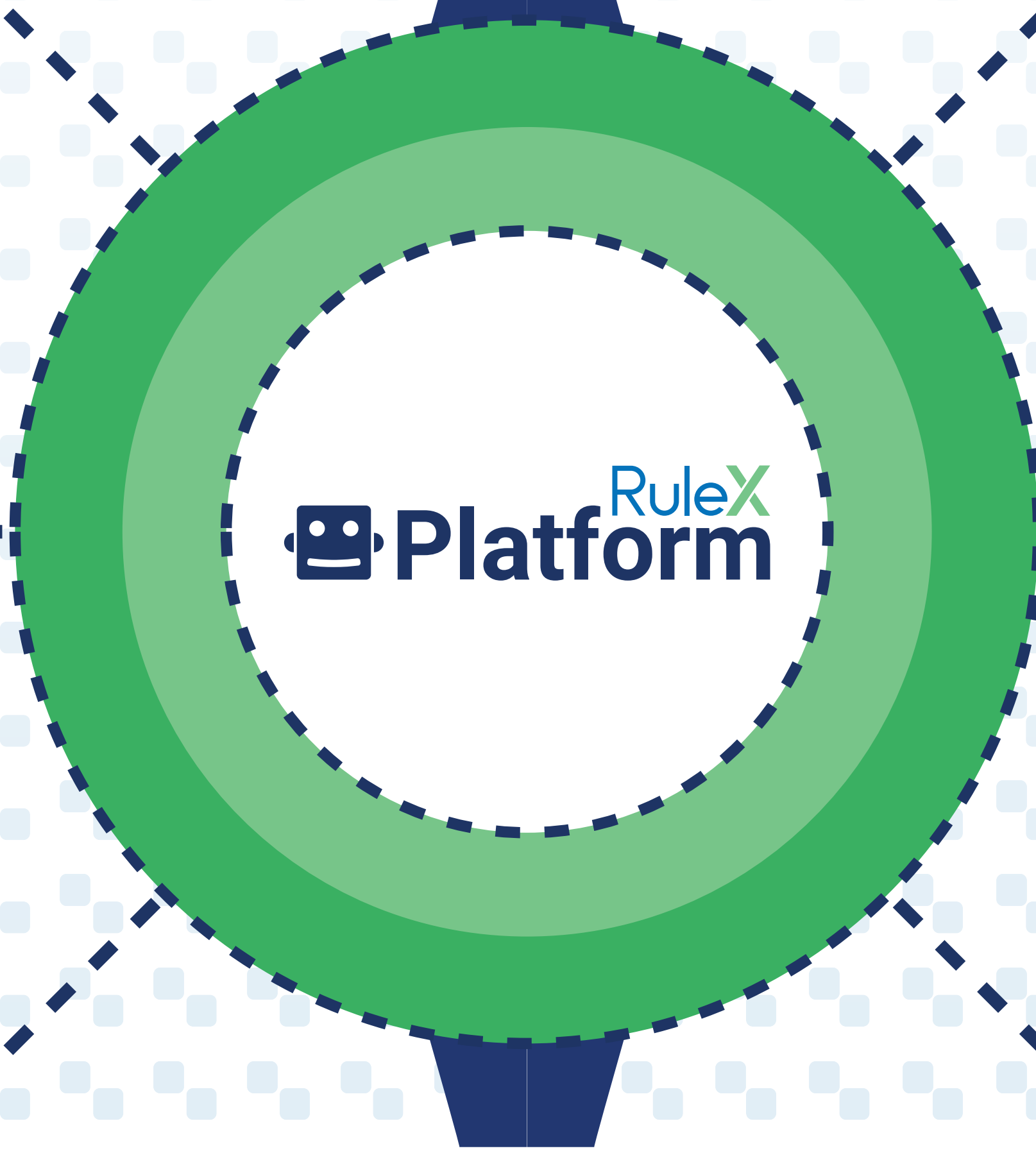
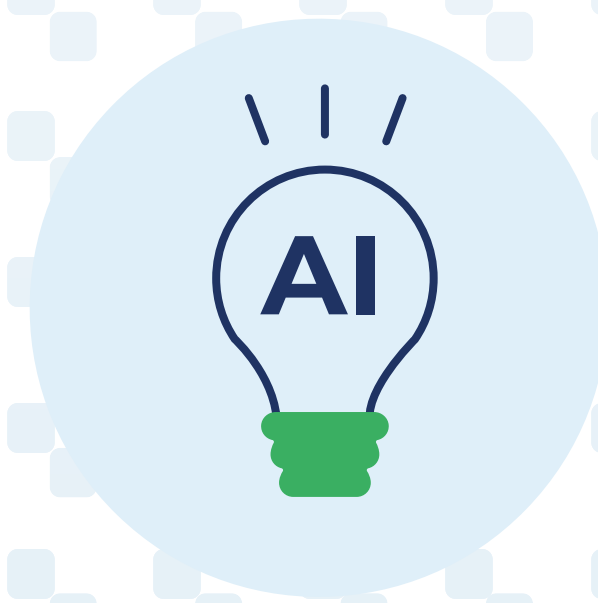
Python and R code integration



Advanced statistics



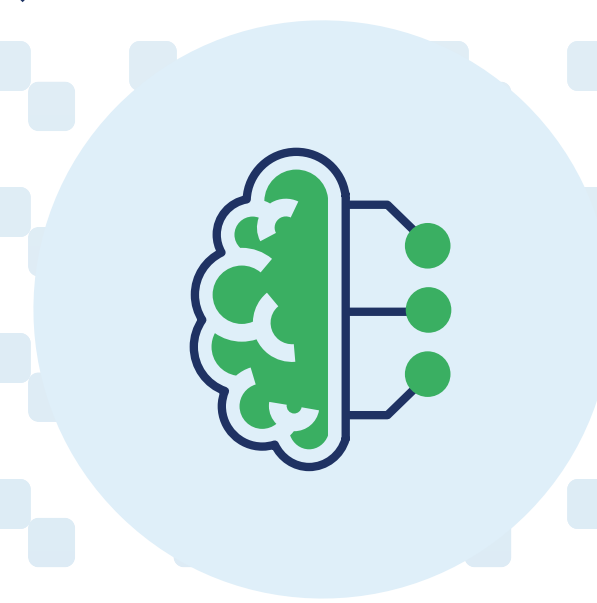
Explainable algorithms



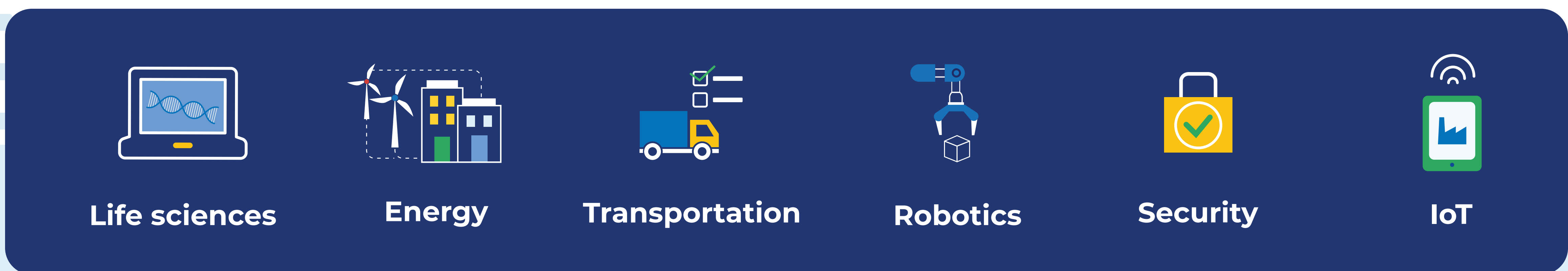
Interactive dashboarding



Machine learning



Output



RULEX AS A PLATFORM FOR SCIENTISTS

- ✓ Time not wasted on data prep
- ✓ Full visibility with WYSIWYG interface
- ✓ Easy integration with Python Pandas/R
- ✓ 1-billion-cell support on standard laptops

WORKING WITH



R&D PROJECTS



www.rulex.ai/research-and-development