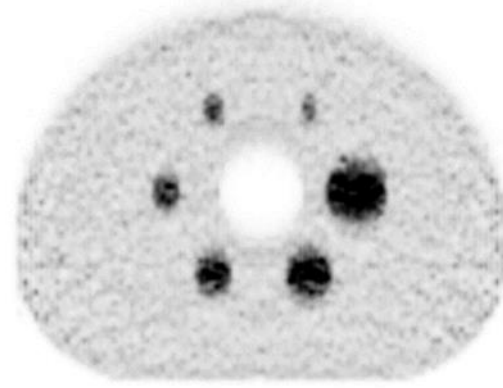
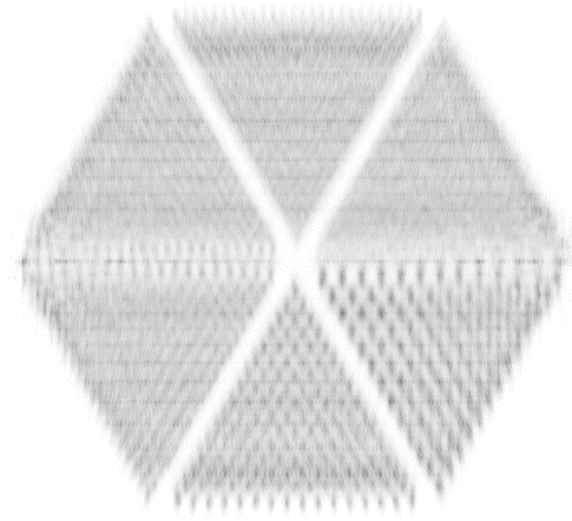
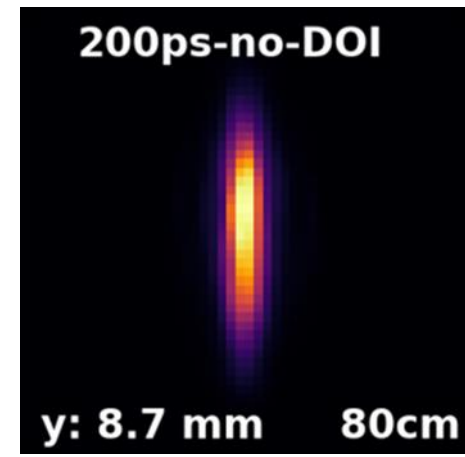
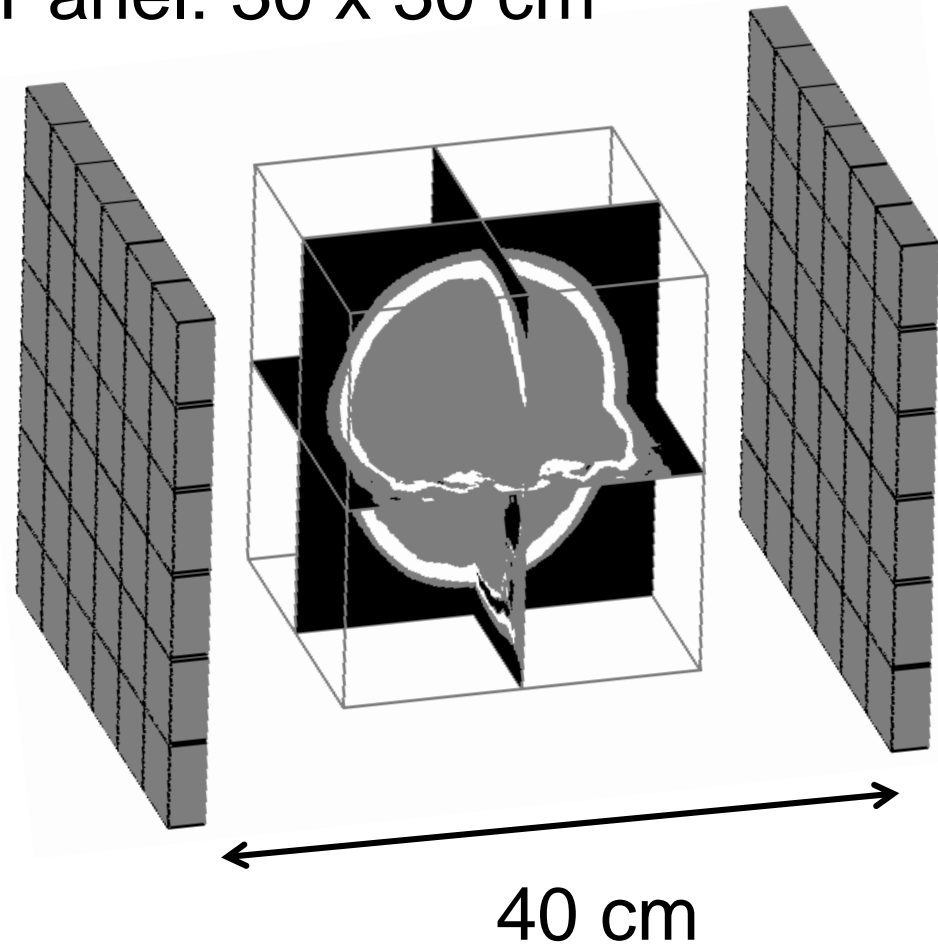
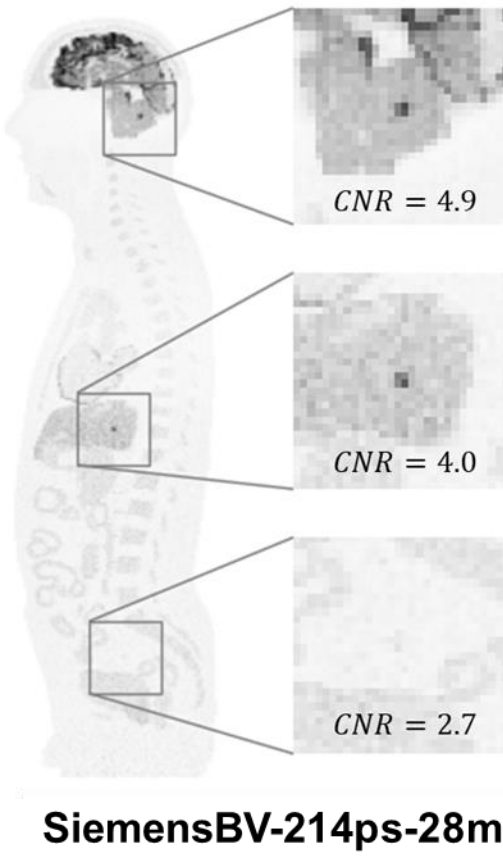
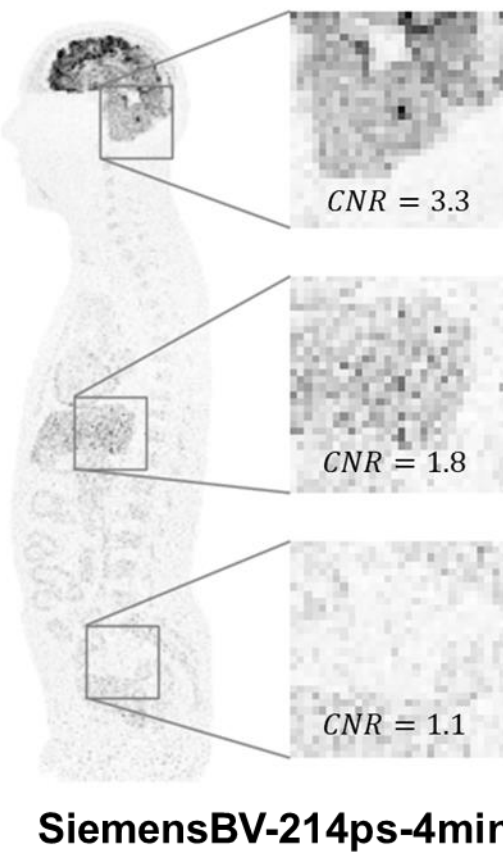
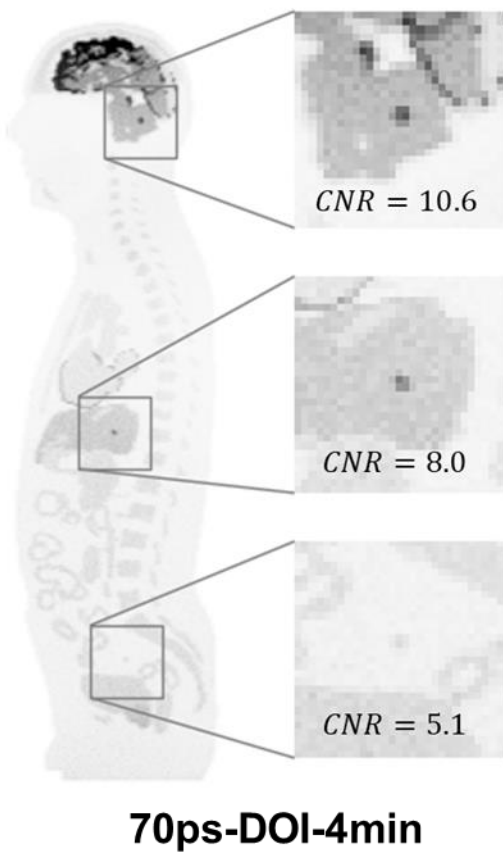
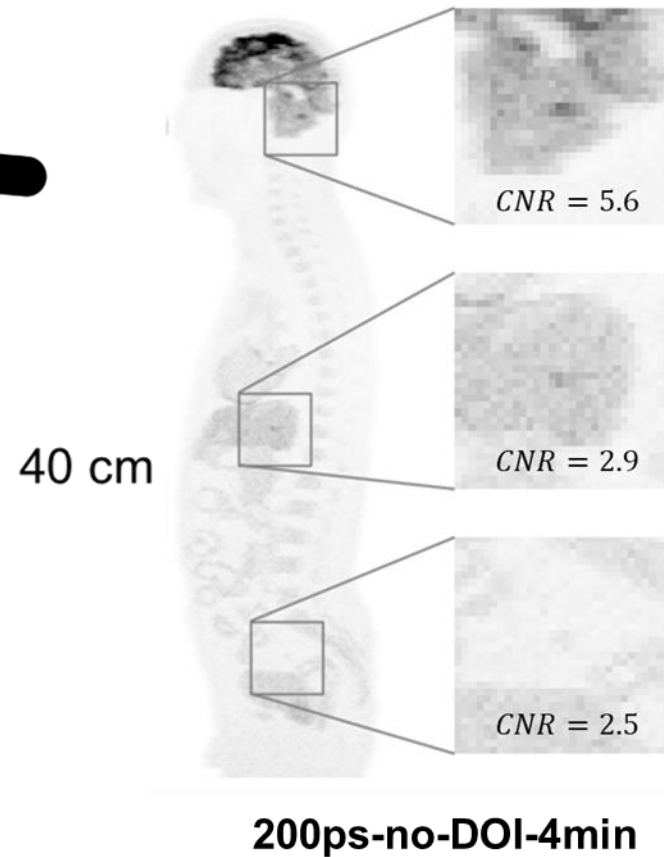
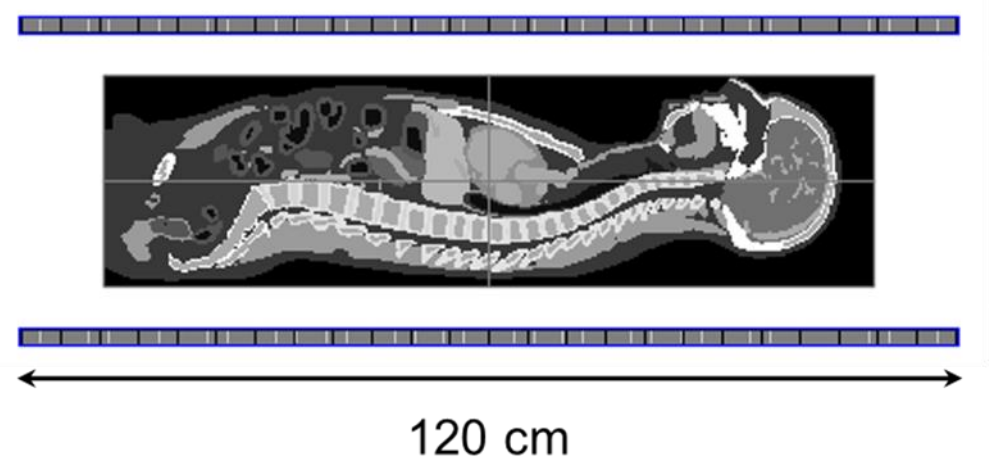
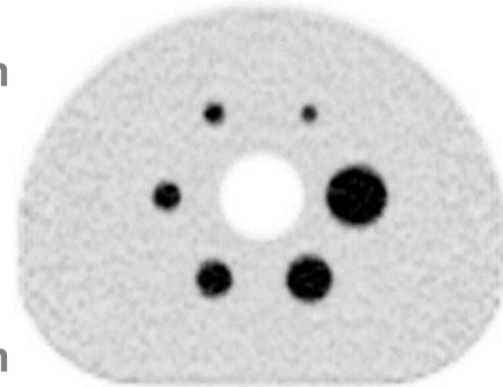
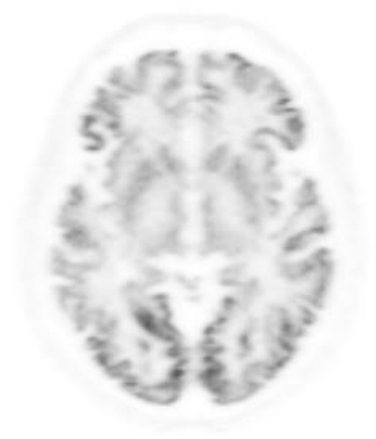
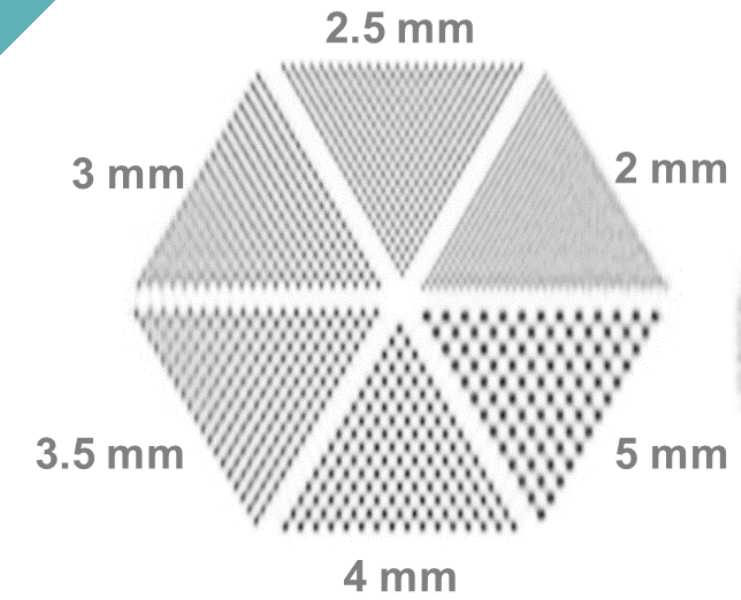
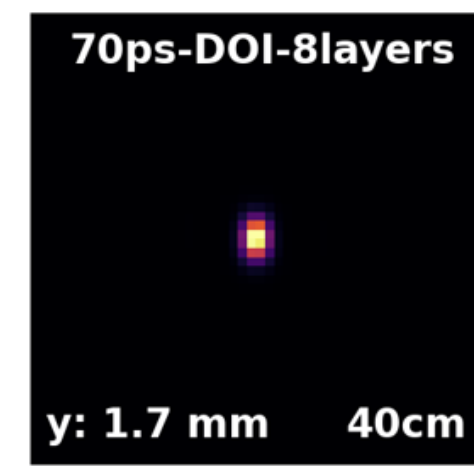


LSO crystals: 3 x 3 x 20 mm
 Panel: 30 x 30 cm



PET VISION

Novel detectors being developed



- A relatively compact 2-panel PET system can achieve image quality comparable to clinical scanners while utilizing approximately **four times less detector material**.
- Its **mobility** and **flexibility** enable novel applications, including bedside imaging and ICU diagnostics, as well as imaging in positions such as sitting or standing.
- The **modularity** of panel detectors offers the potential to construct cost-effective, high-performance long axial field-of-view PET systems.