



Hardware acceleration for fast MRF map reconstruction: FPGA porting of a deep learning algorithm



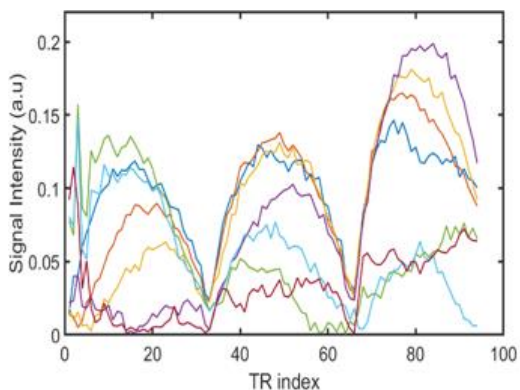
1343

UNIVERSITÀ DI PISA

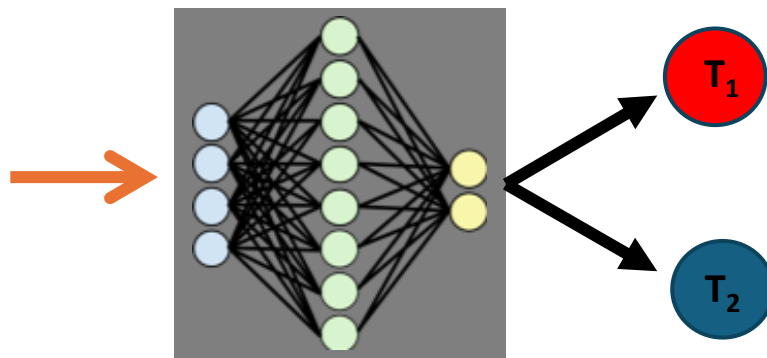
ALMA MATER STUDIORUM
UNIVERSITÀ DI BOLOGNA

Mattia Ricchi, Camilla Marella, Fabrizio Alfonsi, Marco Barbieri, Alessandra Retico,
Alessandro Gabrielli, Leonardo Brizi, Claudia Testa.

AIM: Fast MRF quantitative maps reconstruction using an FPGA hardware accelerated neural network.



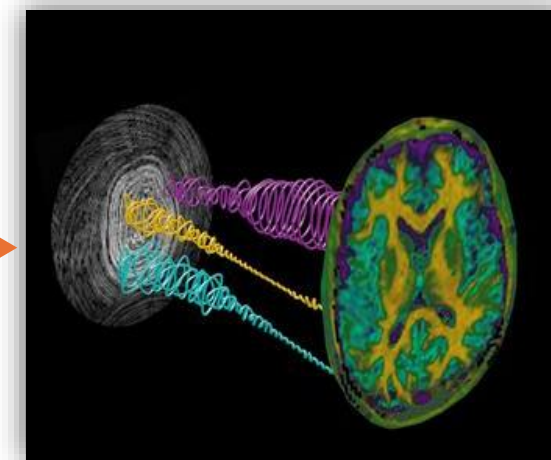
**MR Fingerprinting
Data simulation**



**Neural Network reduction
and quantization to meet
FPGA available resources**



**FPGA Hardware
accelerator: Fast Neural
Network Training**



**Fast MRF quantitative
maps reconstruction**