

# Effects of gas humidity on LIME performance

Rita Antonietti 25/05/2023

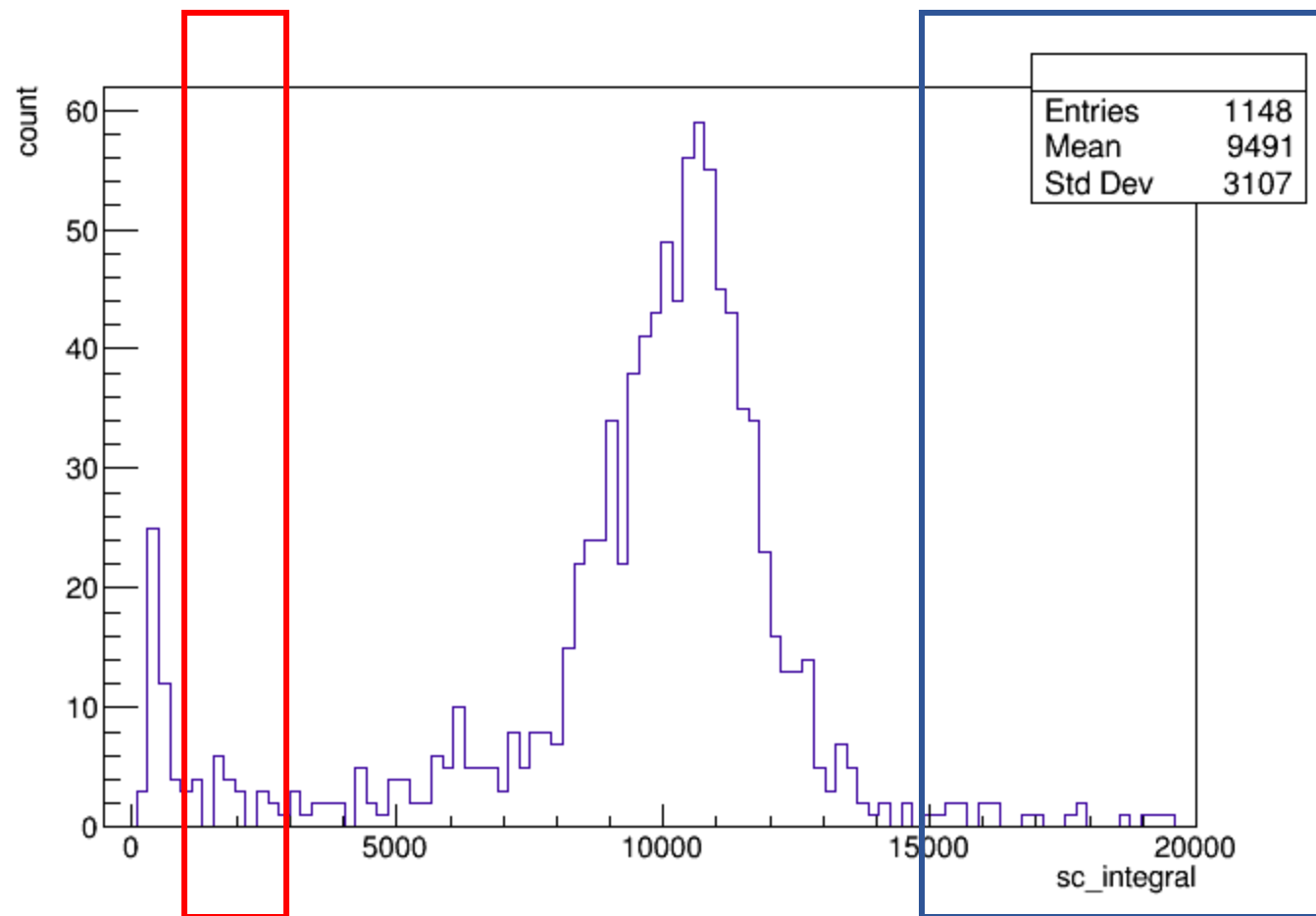
I analysed the runs acquired from 05 May 2023 to today

Runs: 17400 -> 20400

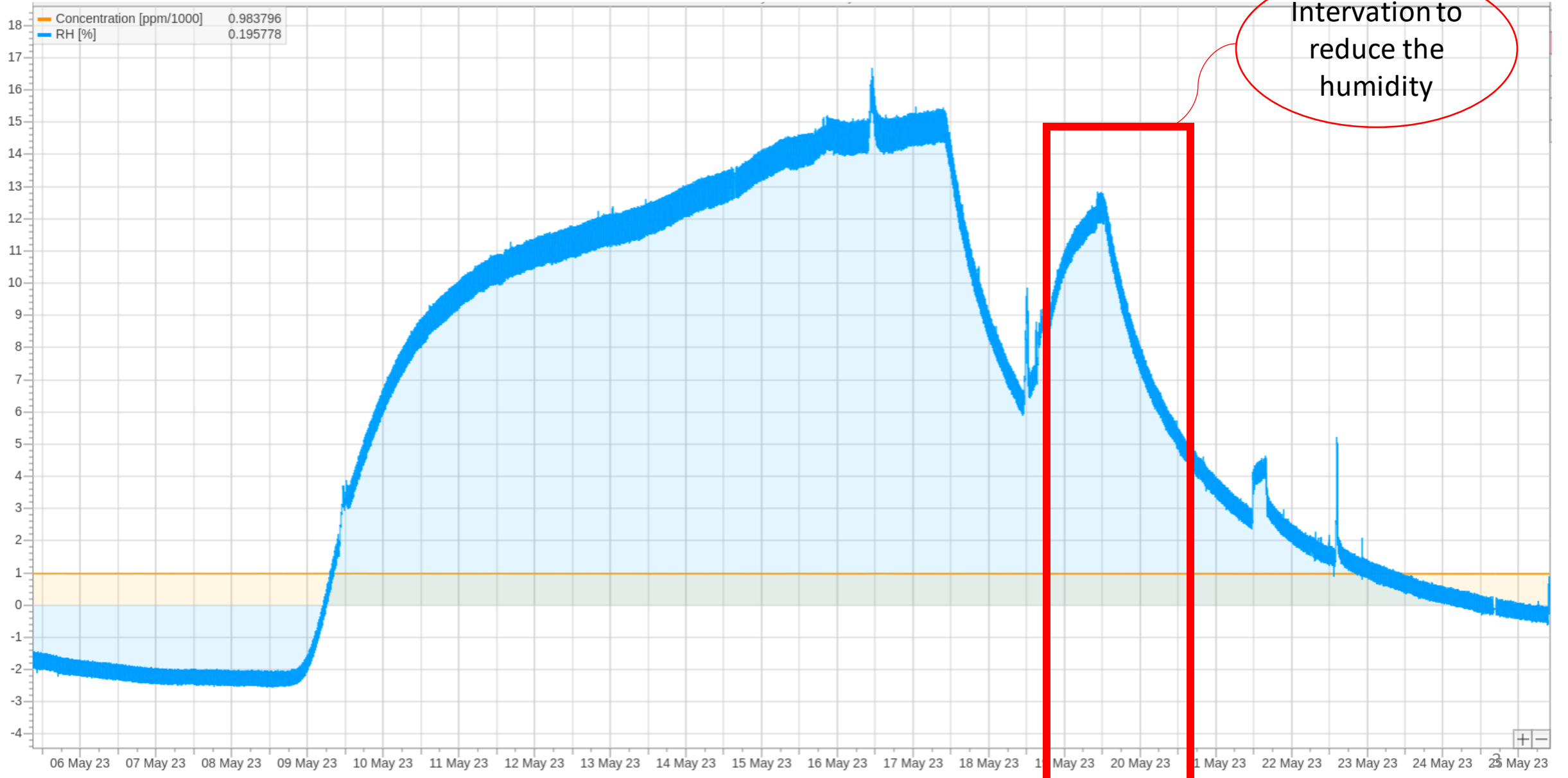
I defined:

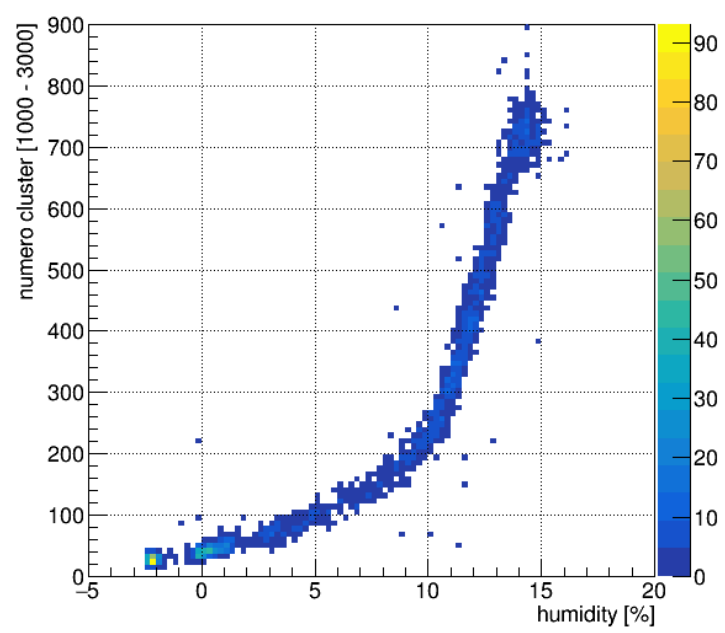
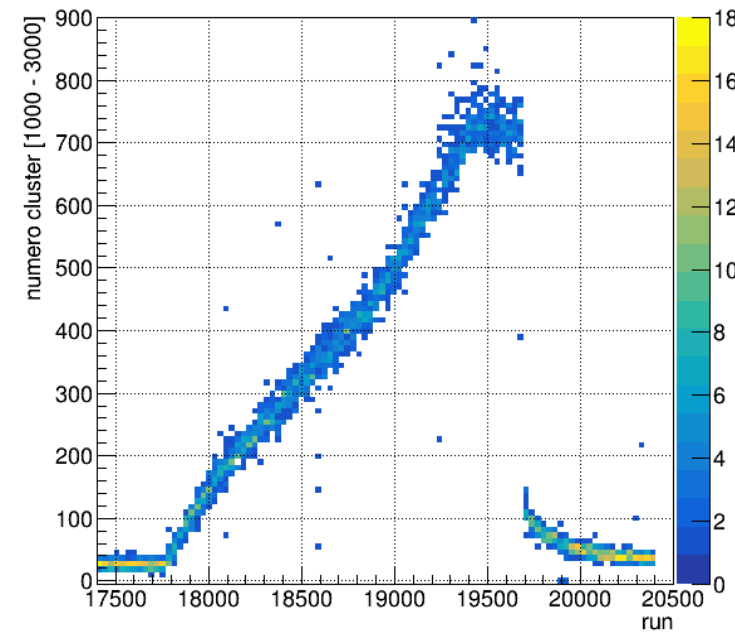
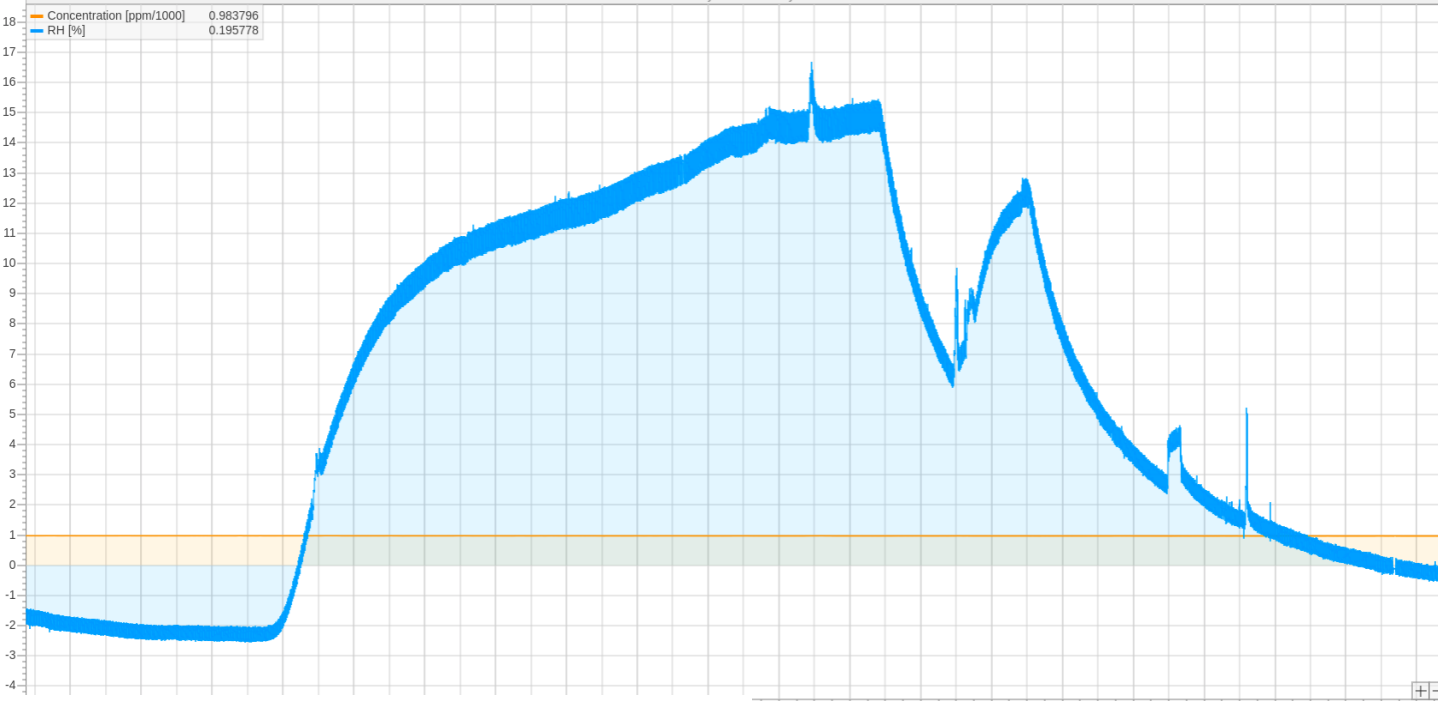
- Cluster number with intensity between 1k and 3k
- The average intensity between 15k and 150k

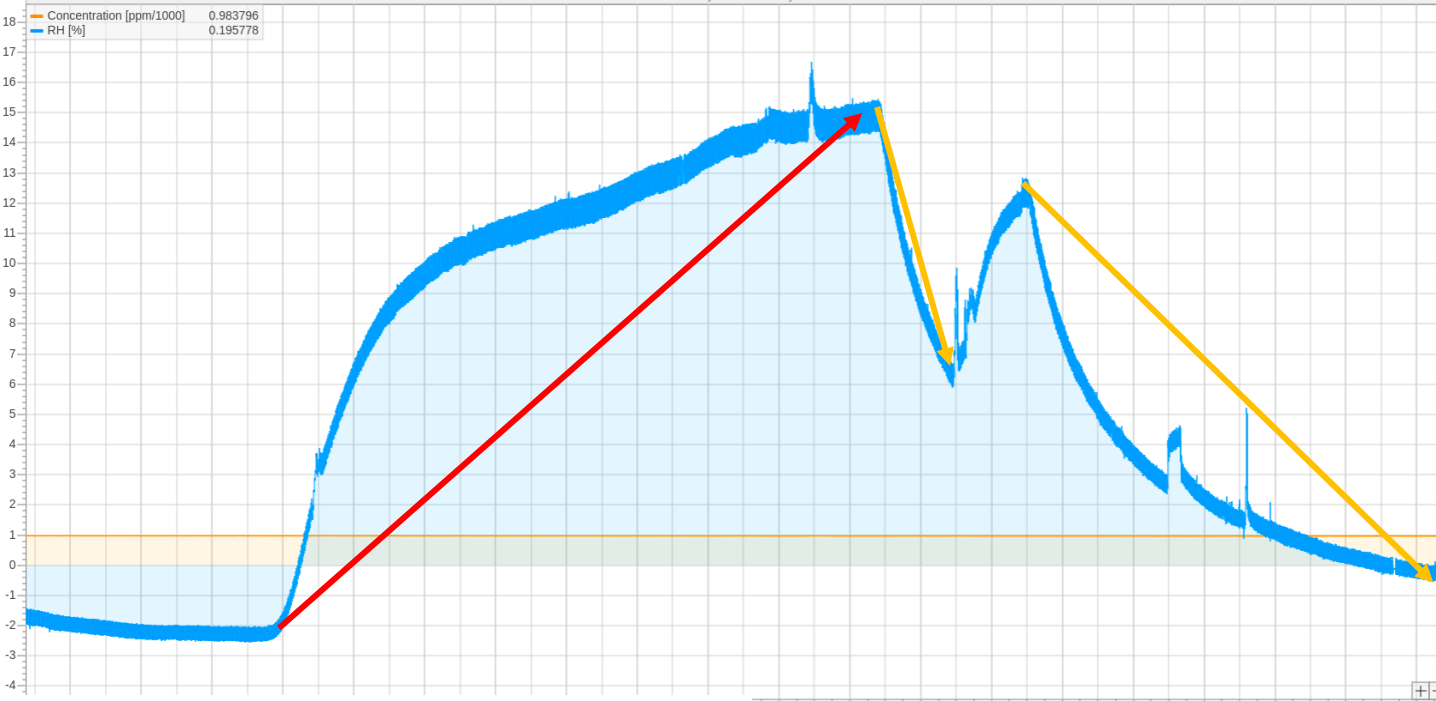
The variables are studied in function of the humidity



# Humidity history in the period taken in exam:

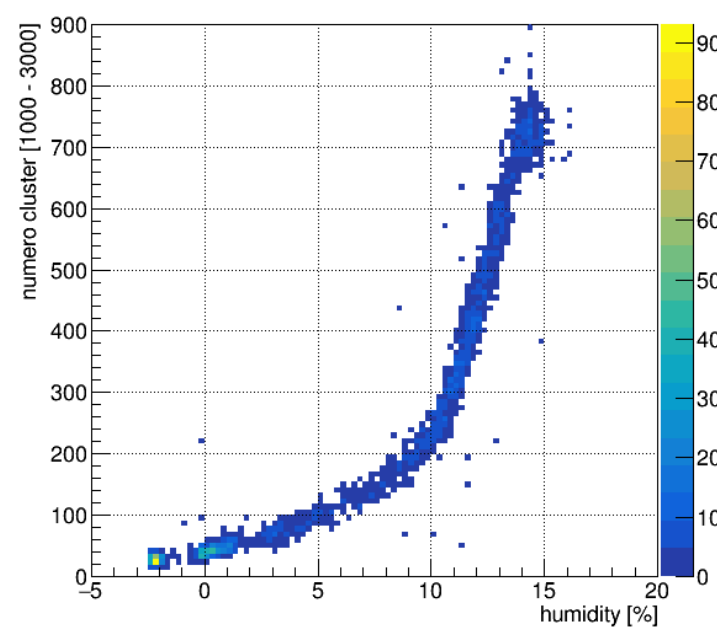
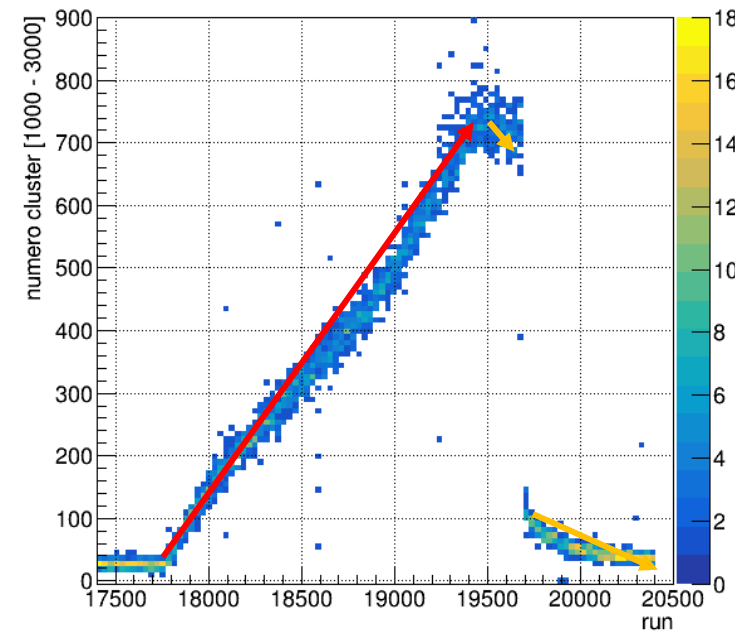


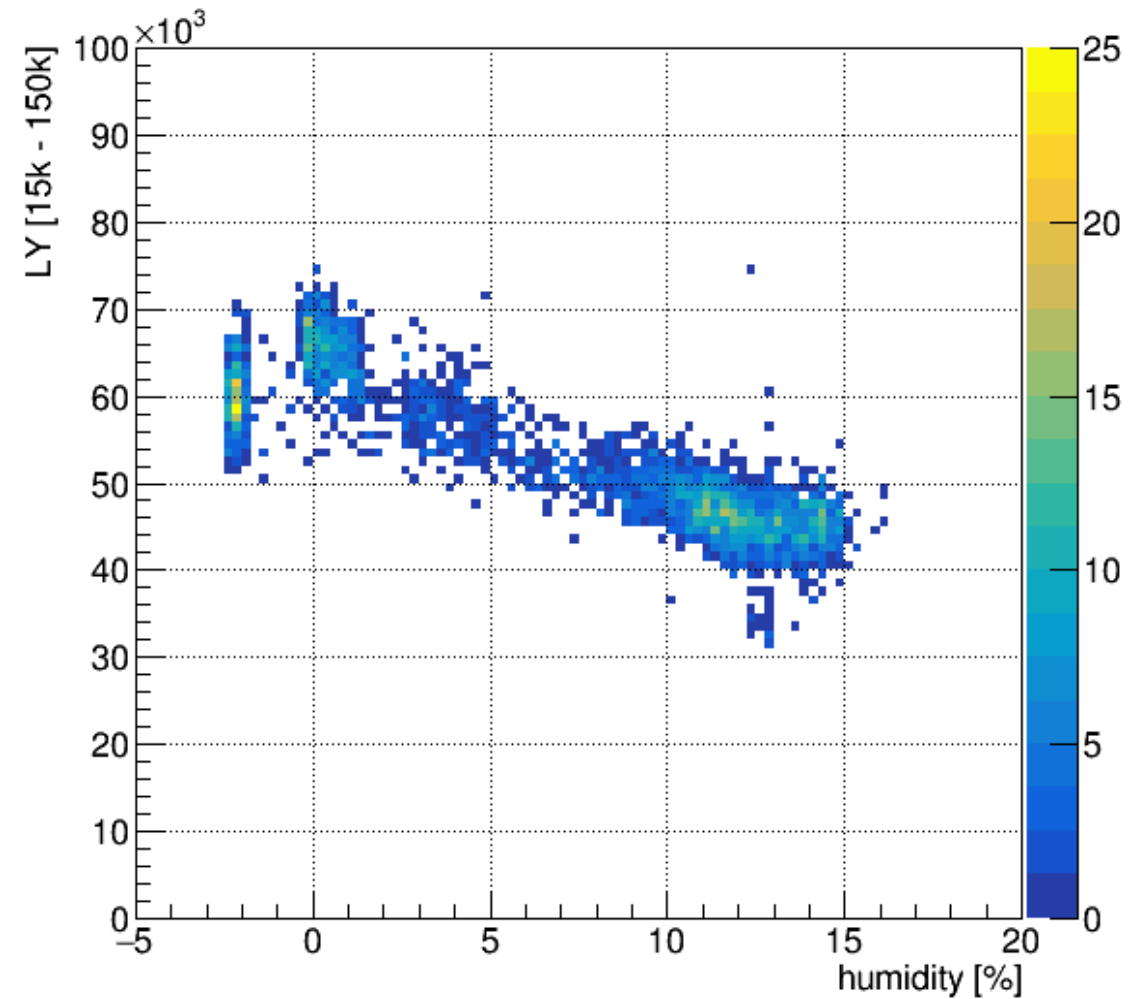
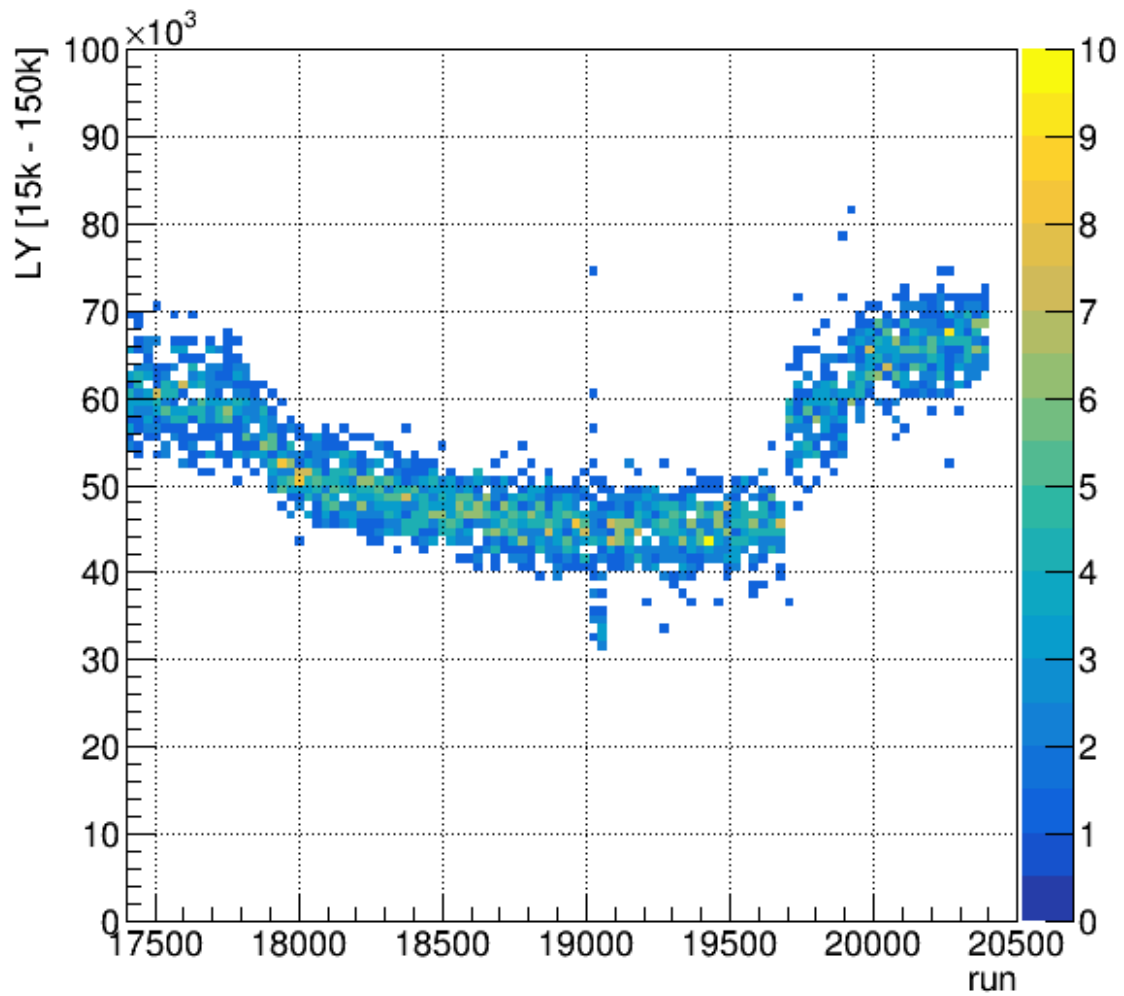




Increasing the humidity -> the number of clusters increases

Decreasing the humidity -> the number of clusters decreases





Increasing the humidity -> the average intensity between 15k and 150k decreases

Decreasing the humidity -> the average intensity between 15k and 150k increases

