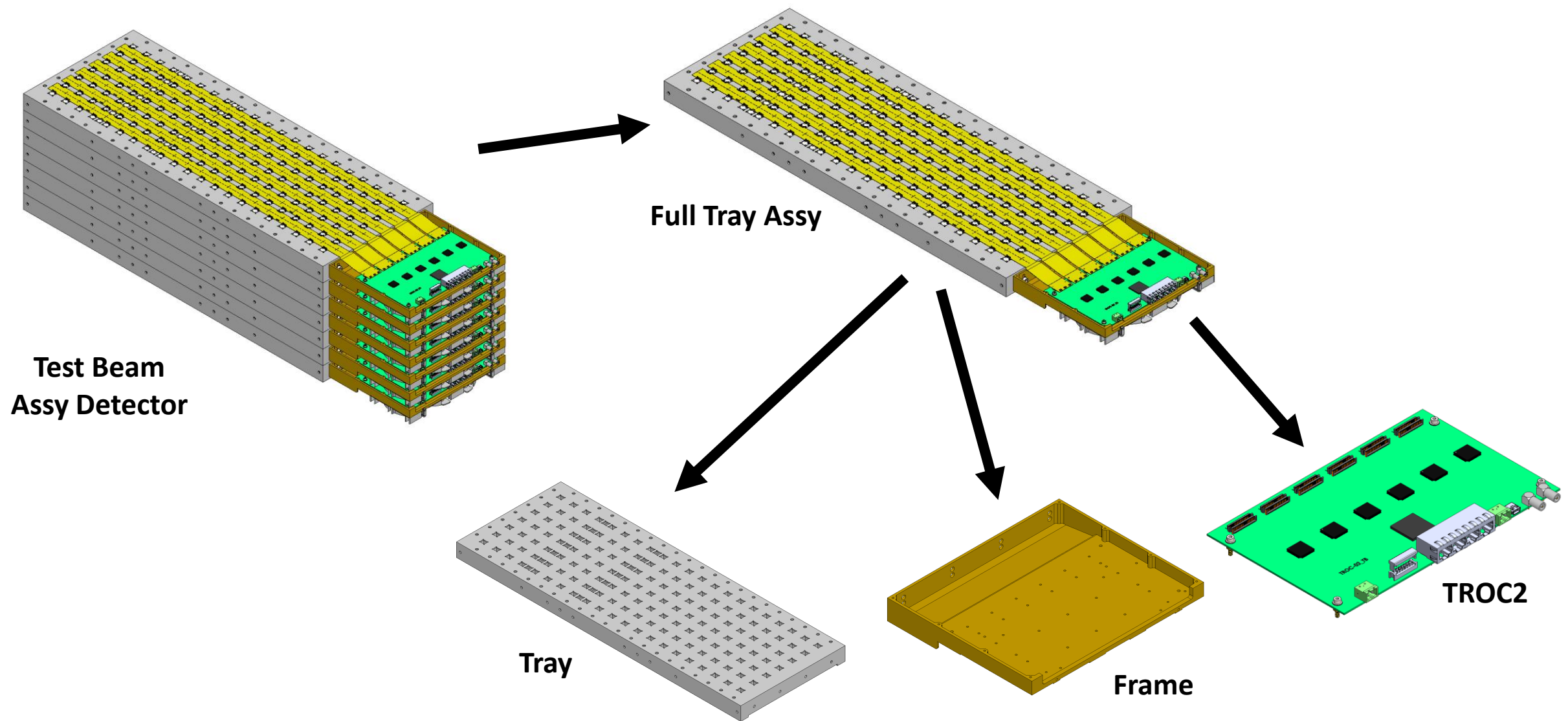


HERD CALO-PD Test Beam 3D model

17/03/2023

Carlos Díaz, Miguel Polo,
Jorge Casaus, Jesús Marín, Gustavo Martinez

- Test Beam Detector parts



Ciemat
Centro de Investigaciones
Energéticas, Medioambientales
y Tecnológicas



Figure 1

1. Trays will be reused from previous Test Beam.
2. All seven trays will include the holes for the blind detectors.
3. Interface holes with TROC2 Frame will remain misaligned. As shown in figure 2.

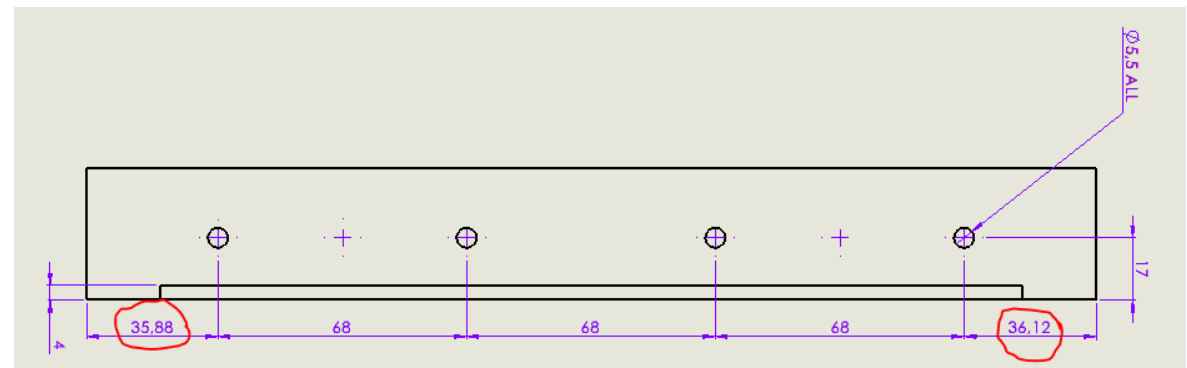
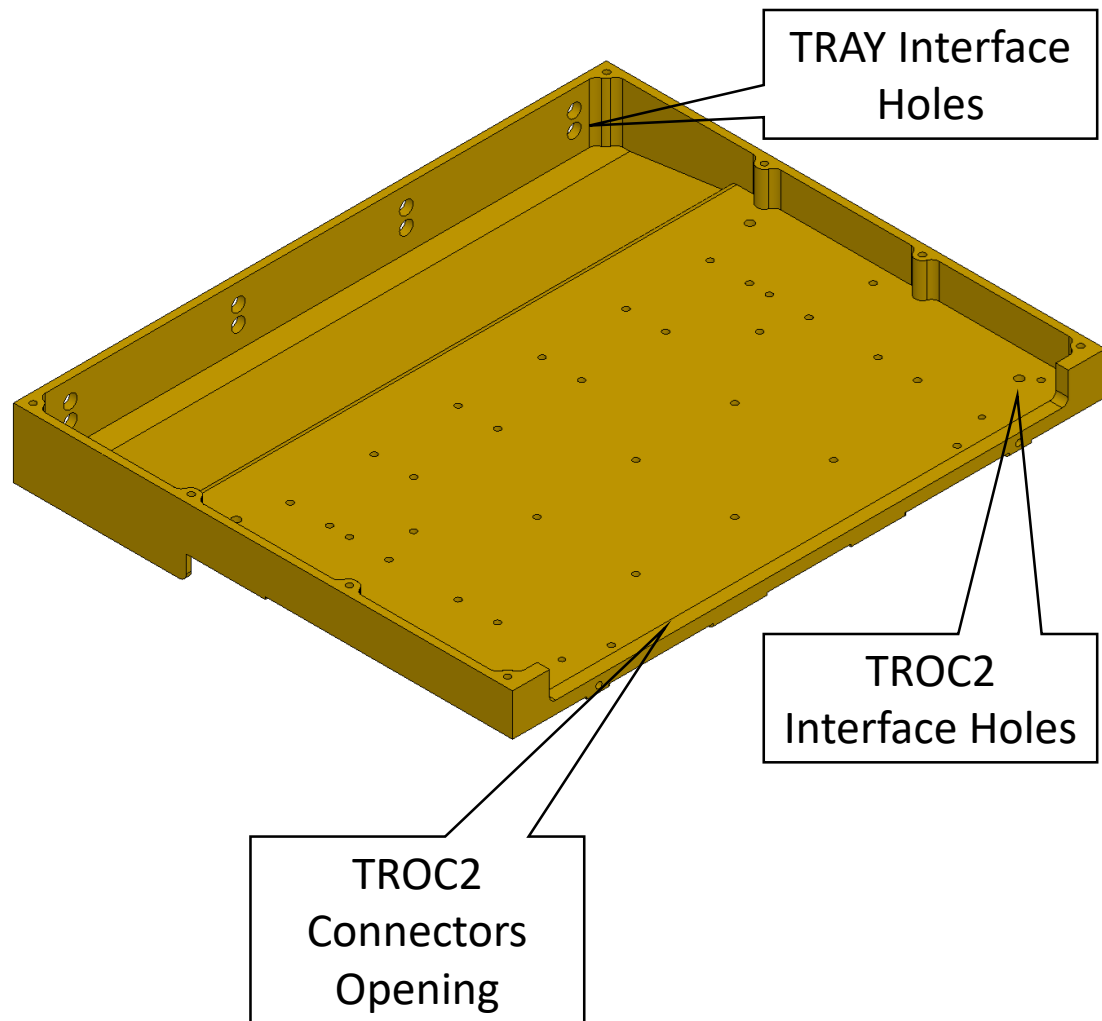


Figure 2

Frame



FRAME:

1. Do FRAMEs will be reused from previous Test Beam or new manufacturing?
2. Do interface holes with TRAY will remain misaligned? As shown in Figure 2.
3. All seven trays will include the 4 M3 holes for the TROC2 interface and the front opening for the connector as shown in the distributed PDF drawing.
4. It will be good to have one real object at CIEMAT as soon the manufacturing finished.

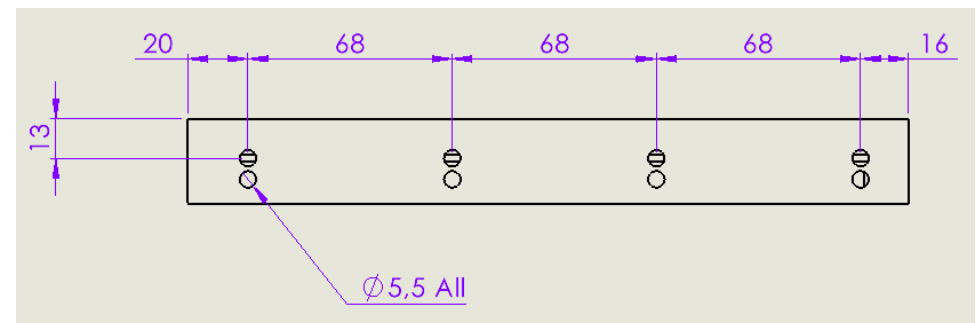
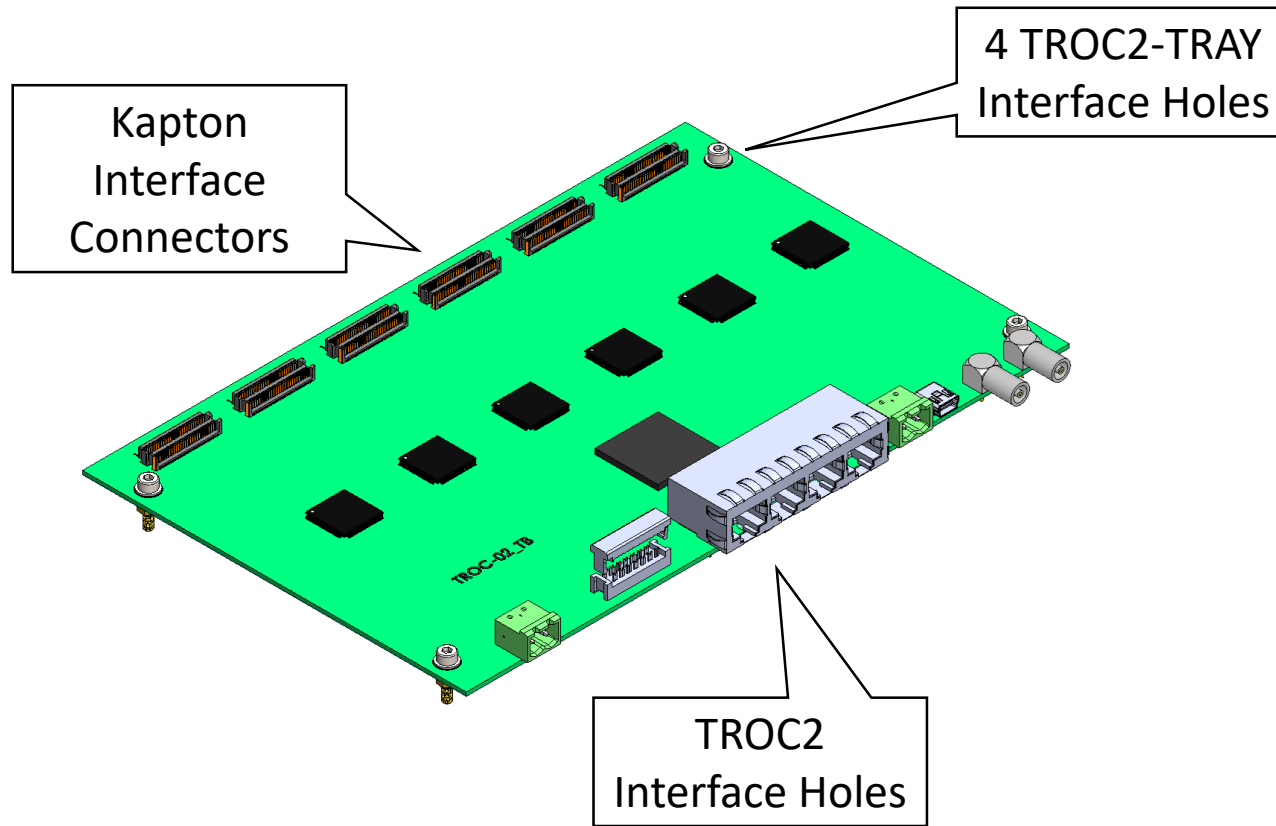


Figure 2

TROC2



TROC2:

1. TROC2 interface with Frame by use of 4 Screws M3.
2. Dimensions as shown in distributed drawing and figure 2

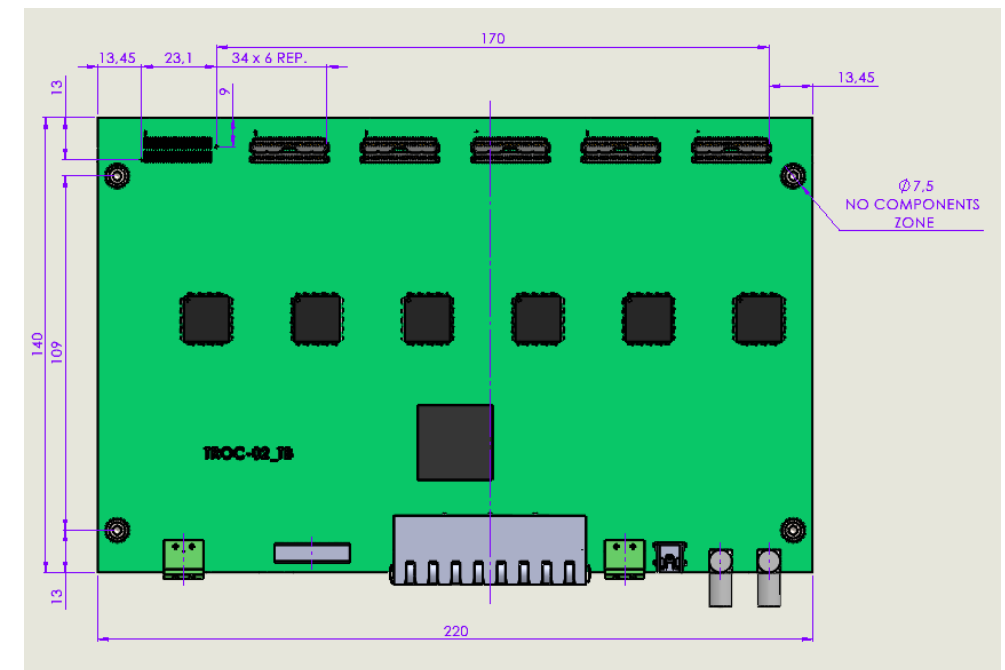


Figure 2