

# CLPU/EUPRAXIA WP9

G. Gatti

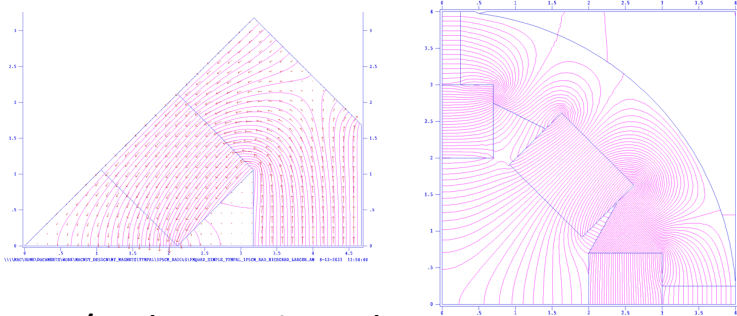


- Capabilities/Interests

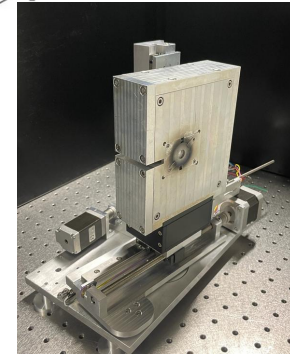
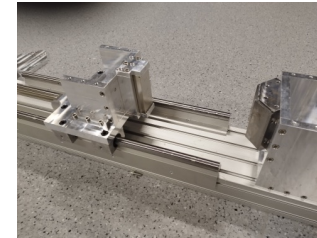
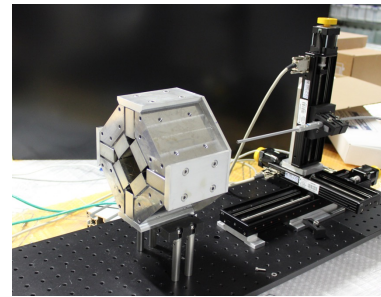
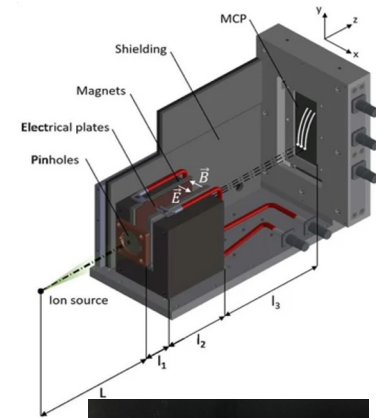
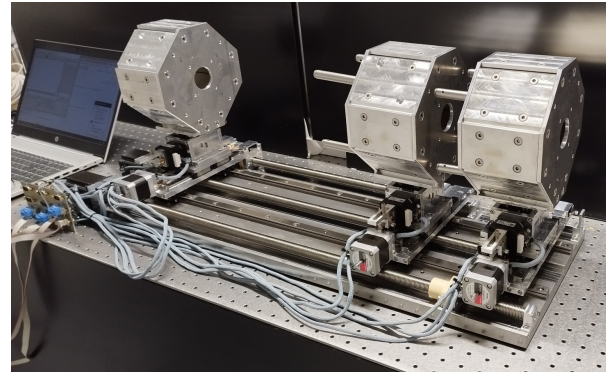
# MAGNETIC ELEMENTS

## Capabilities:

- Elements based on PM: NdFeB Iron and Hyperco.
- Design 2D-3D
- Part of machining/Assembly
- 3D Mapping



50 T/m (4 cm diam.)



RF

- Interest in multi-Laser (station) synchronization with PLL loops and optical links (still prelim.)
- Study, characterization of EMP generated by High Intensity Lasers and HF simulations

