

Overground LIME: scan in VGEM1

First results



R. Roque | CYGNO Reconstruction & Analysis Meeting | 15/12/2022

Pre-processing

Data Information

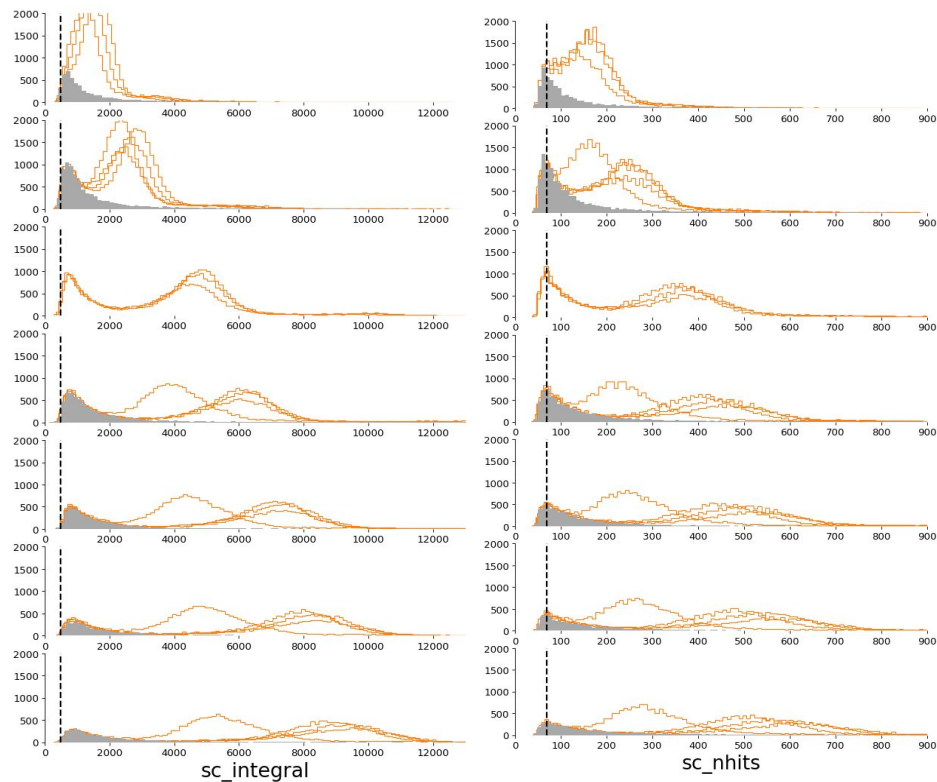
- Runs 4432 -> 4469
- Dark lab, air cooled, He-40%CF₄
- VGEM2 = VGEM3 = 440 V
- Scan in z and in VGEM1 with ⁵⁵Fe source

Runs	Bk	45 cm	35 cm	25 cm	5 cm
440 V	4433	4441	4448	4455	4463
431 V	4434	4442	4449	4457	4464
420 V	4436	4443	4450	4458	4465
406 V	4437	4444	4451	4459	4466
386 V	4438	4445	4452	4460	4467
350 V	4439	4446	4453	4461	4468
320 V	4440	4447	4454	4462	4469

Data Cleaning

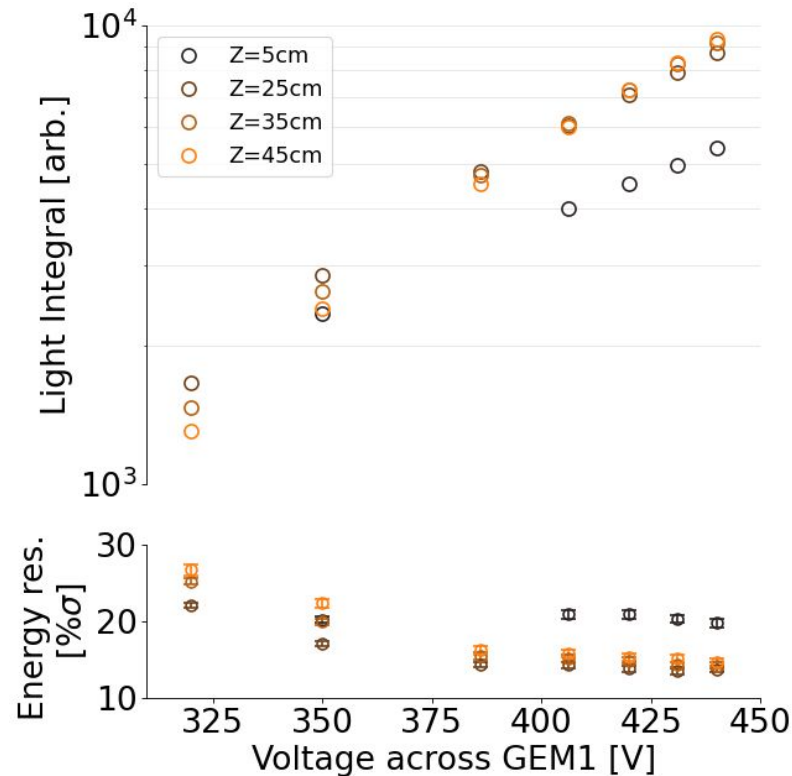
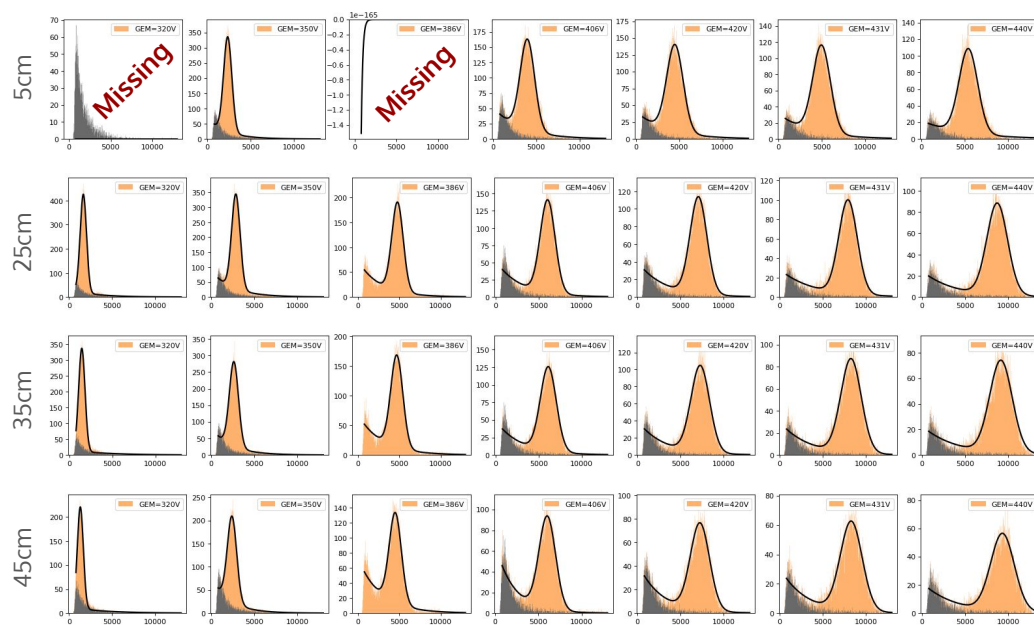
The same cuts were applied to all runs.

I am working with 20% of the original dataset.



Light integral vs VGEM1

The light integral spectra of each VGEM1 and z was fitted to a Gaussian + background profile.



Reconstructed spots vs VGEM1

