



QA/QC, INTEGRATION AND GENERAL NAGGING

LIZETH MORALES GALLEGOS

CAPACITY LABORATORY





THE LAB



THE PEOPLE

PROGRAMMERS AND THEORETICIANS

THE PEOPLE

PROBLEM GENERATORS

THE PEOPLE



LQSS (SNITCHES)

THE PEOPLE

PROBLEM SOLVERS

THE PEOPLE

THE BOSS

THE PEOPLE

What do LQSSs do?

QA/QC
Quality assurance
Quality control

We tell everyone there's some
problem that has to be solved
We also check stuff and
register **EVERYTHING**



IDENTIFICATION

NCR Title information part: *

University/Institute: *

Supplier:

UPI (Unique Product Identifier): *

Product: *

Classification: *

NCR opened by (LQS' name): *

Responsible subgroup coordinator's name: *

Originator's name:

Control

If something is not as it should we snitch with an NCR Non Conformity Report

The more we know and add, the better!

Control

What to check?

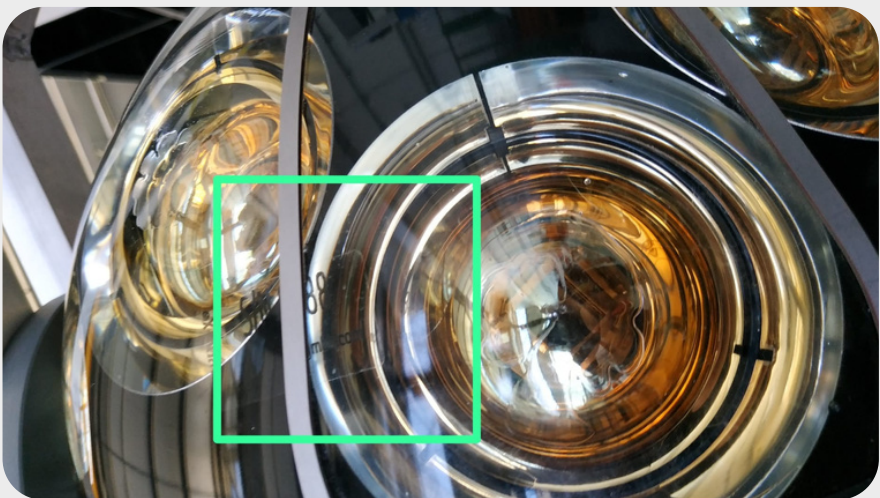
Stuff



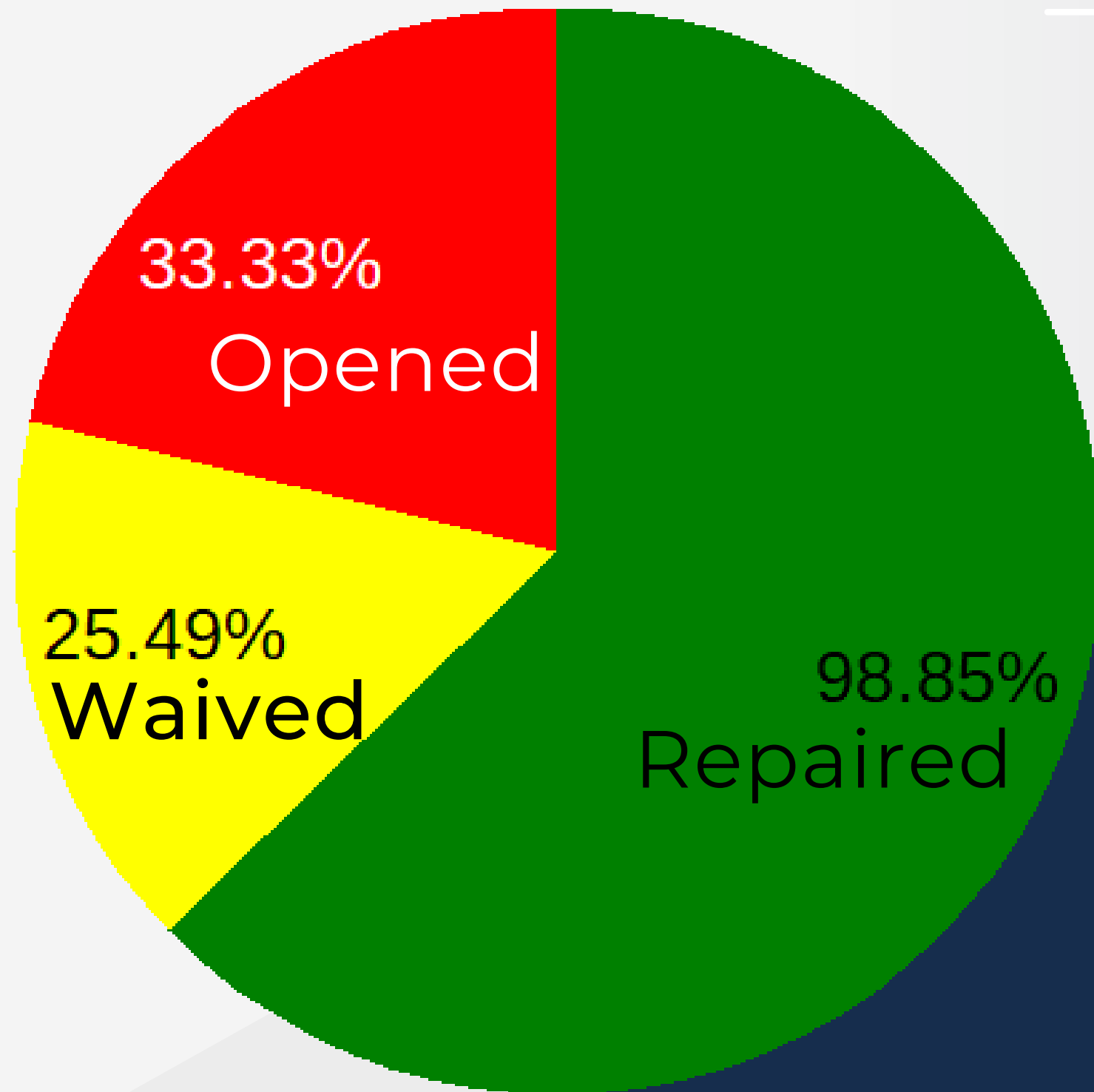
Procedures

	(IF INTEGRATED) DU UP														DATE		SR					
Step 2. Pressure gauge																						
Integration details available on DB		Measured underpressure				Underpressure at acceptance test				Underpressure OK		Underpressure red one		Externally measured underpressure		Pr						
[Y] [N]		bar				bar				[Y] [N]		[Y] [N]		bar								
Step 5. Collar																						
Notes		Collar OK				If NOT OK, Pictures in drive				Notes		Get OK		Dd		Dd						
		[Y] [N]										[Y] [N]				[Y]						
Step 7. Collection Rings																						
Channel		0	1	2	3	4	5	6	7	8	9	10	11	12	13	14	15	16	17	18	19	20
Edge																						
Alignment																						
Step 8. NCR																						
Step 2. Pressure gauge																						
Integration details available on DB		Measured underpressure				Underpressure at acceptance test				Underpressure OK		Underpressure red one		Externally measured underpressure		Pr						
[Y] [N]		bar				bar				[Y] [N]		[Y] [N]		bar								
Step 5. Collar																						
Notes		Collar OK				If NOT OK, Pictures in drive				Notes		Get OK		Dd		Dd						
		[Y] [N]										[Y] [N]				[Y]						
Step 7. Collection Rings																						
Channel		0	1	2	3	4	5	6	7	8	9	10	11	12	13	14	15	16	17	18	19	20
Edge																						
Alignment																						
Step 8. NCR																						

Incidents



NCRs at CAPACITY



51 NCRs since 2021
Registered in the DB



Instrumentation

Everything that arrives to the lab should be registered.
If everything arrived ok, following the Procurement Responsibles instructions, we register in the DB

Instrumentation

At the CAPACITY laboratory, even minor components or borrowed stuff is registered in a local inventory to keep track .
This simplifies the lives of the local Integration and Procurements teams as they are aware of all the consumables.

Instrumentation

The CAPACITY lab is now the European storage site which means that many things arrive and many others have to be sent to other sites.

We keep track of "movement" with a Shipping Record Sheet (SRS). Everything is registered in the DB.

Important to warn your LQS about arrivals AND departures!

SUMMARY

**Keep your LQS close,
you never know when you'll
need her/him**



THANK YOU



Viale Carlo III 153,
San Nicola la Strada (CE)



@km3netnapoli



KM3NeT
arca&orca

