

CYGNO_04 geometry

Giulia D'Imperio

CYGNO simulation meeting 03/10/22

New geometry

The image shows a CAD software interface with a 3D model of a detector assembly. The interface includes a 'Combo View' window on the left with a tree structure of components and a 'Property' window below it. The 3D model is a semi-transparent yellow box containing a central assembly. Labels point to specific parts: 'water shield (1 m)' for the outermost layer, 'Cu shield (10 cm)' for the inner layer, and 'PE base' for the bottom support. The software window has tabs for 'Model' and 'Tasks', and a 'Report view' button at the bottom.

Combo View

Model Tasks

Labels & Attributes	Description
camera_shield	
cameras	
pmts	
acrylic_box	
fc_cu_rings	
cathode	
cathode_frame	
gems	
gem_frame	
fc_resistors	
internal_structure	
pe_shield	
water_shield	
lenses	
lenses_ext	
fc_sheet	
shield_Cu	

Property Value

View Data

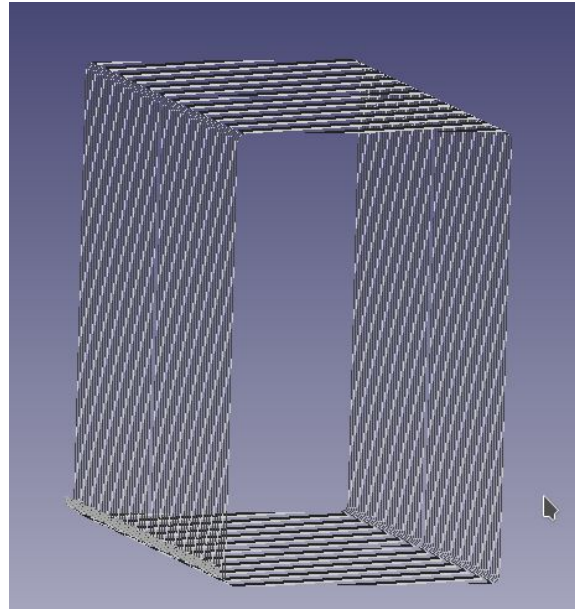
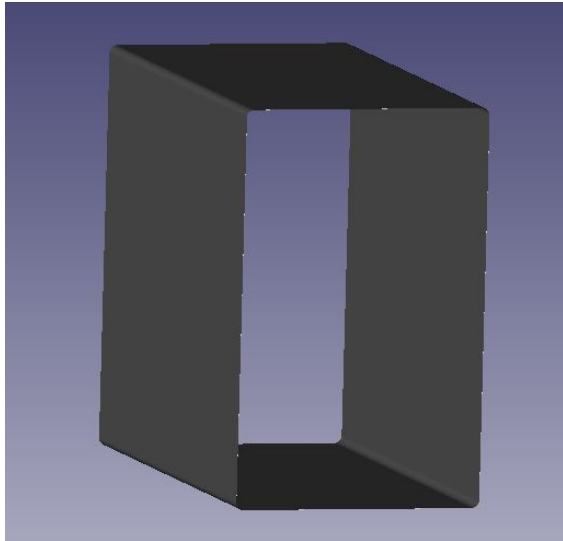
Start page x cygno_04_meshed:1 x cygno_04_giulia_new:1* x

Report view

New geometry

Two types of field cage implemented:

- Cu rings with resistors
- sheet (darkside?)



Geometry in github

- Implemented in github geometry repo: <https://github.com/CYGNUS-RD/geometry>
- Still to be implemented in CYGNO-MC geant4 code

CYGNUS-RD / **geometry** Public

<> **Code** Issues Pull requests Actions Projects Wiki Security Insights Settings

master 1 branch 0 tags

Go to file Add file Code

gdimperi added new version of cygno_04 (as of TDR jul 2022) ef67aed 4 days ago 6 commits

cygno_04	cygno_04 stl files	6 months ago
cygno_04_v2	added new version of cygno_04 (as of TDR jul 2022)	4 days ago
lime	new LIME CAD files	6 months ago
lime_new	new LIME geometry	5 months ago
v2	lime and CYGNO geometry	2 years ago

Help people interested in this repository understand your project by adding a README. [Add a README](#)