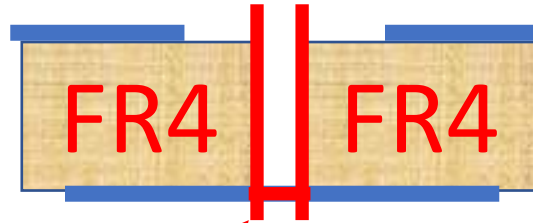


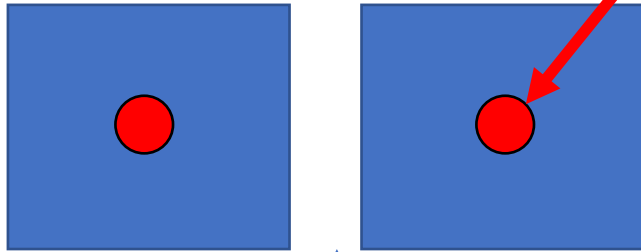
LAPPD side

Side view



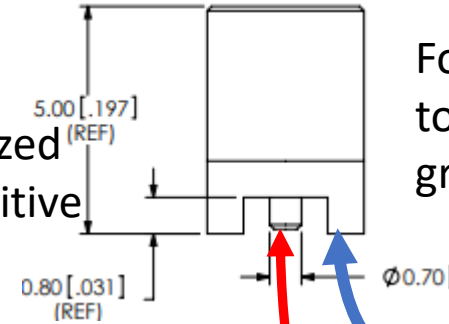
Cable side

Sensitive pad
6x6 mm²

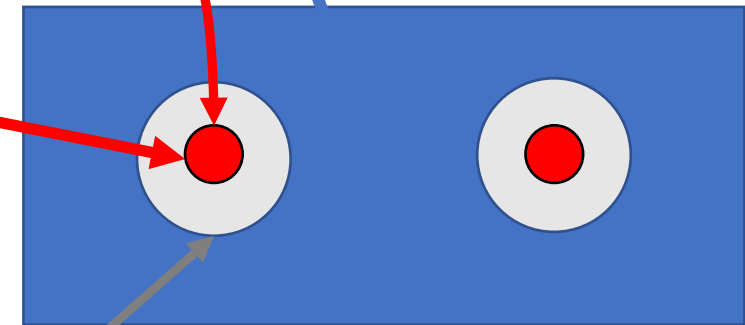
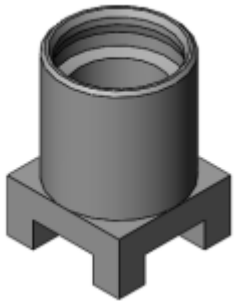


Metalized through hole

Pole soldered to metalized hole to connect to sensitive pad on opposite side



Four legs soldered to surrounding ground plane



Common Ground plane

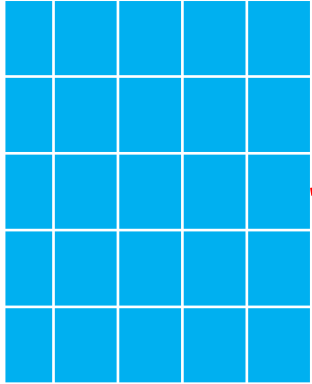
Clean FR4 isolation

And 5x5 pad blocks with smaller pads:
5x5 mm² and 4.2x4.2 mm²

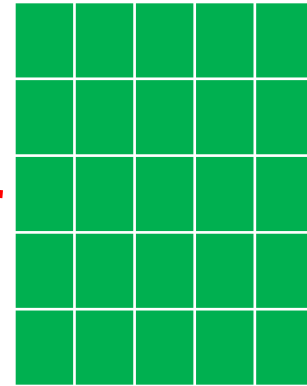
In center one section with 60 mm
radius ring
Pads 6x6 mm²

And 5x5 pad blocks with smaller pads:
5x5 mm² and 4.2x4.2 mm²

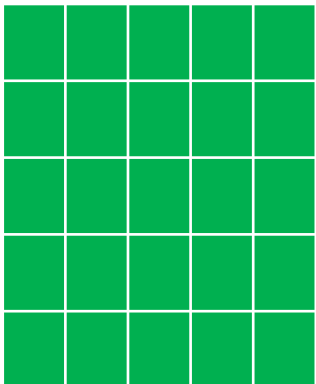
Pitch 4.5x4.5 mm²



Pitch 5.2x5.2 mm²



Pitch 6.2x6.2 mm²



Pitch 4.2x4.2 mm²

