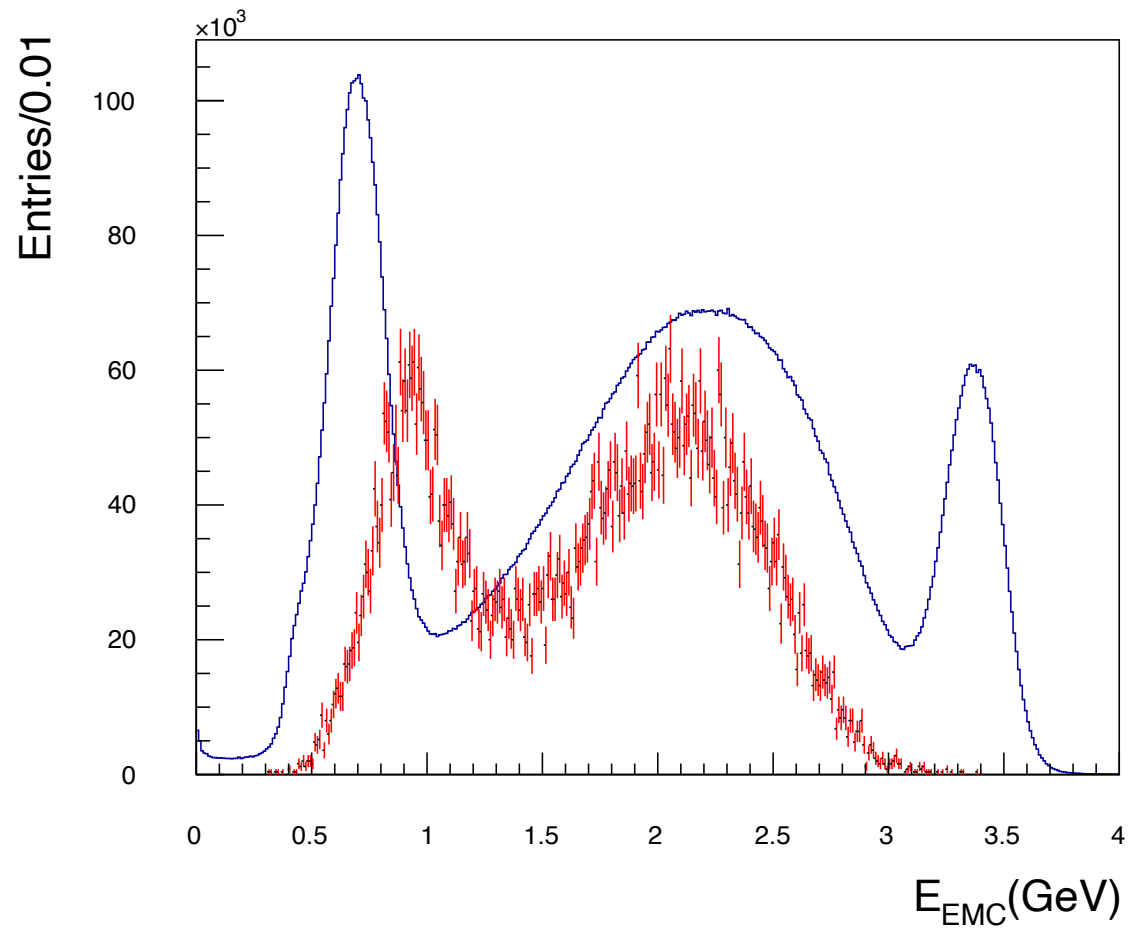
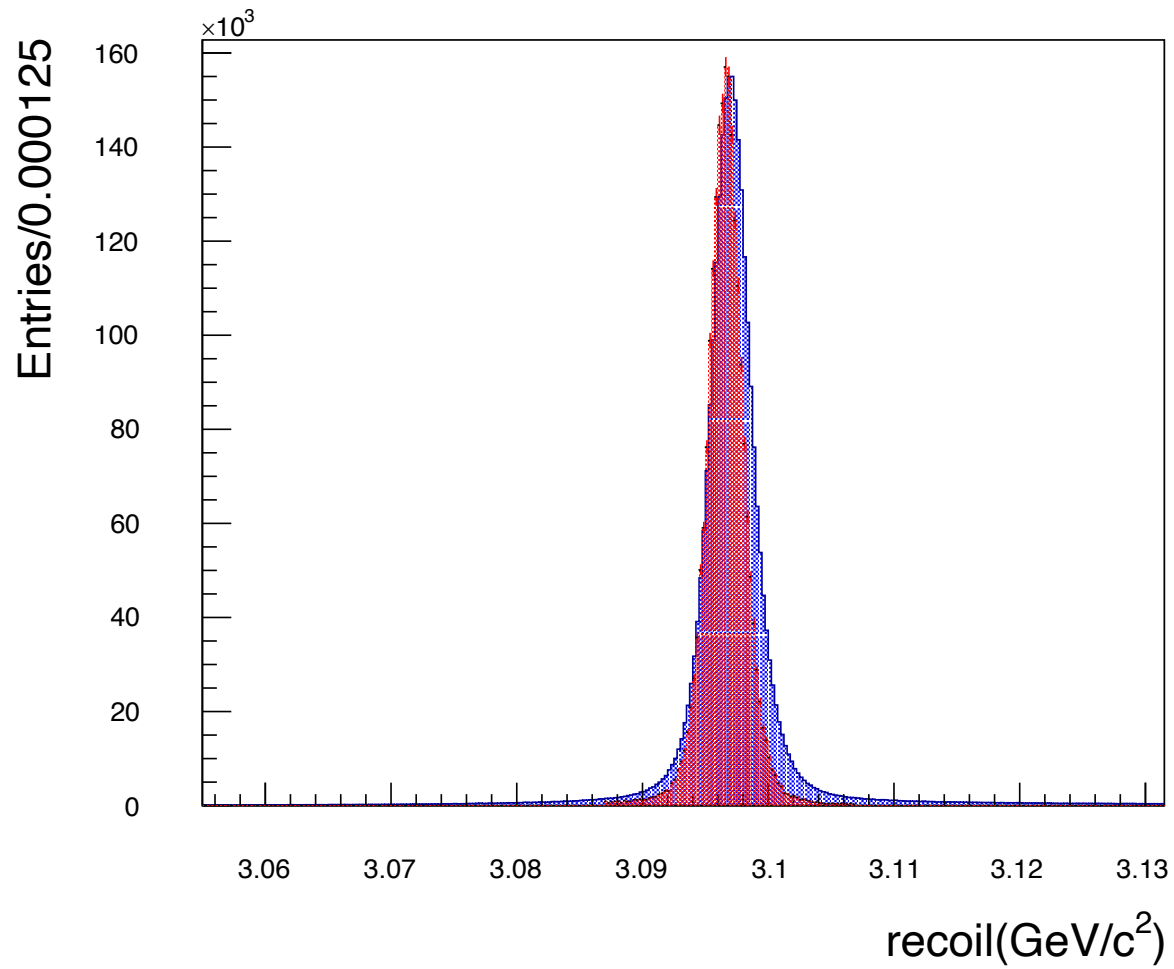


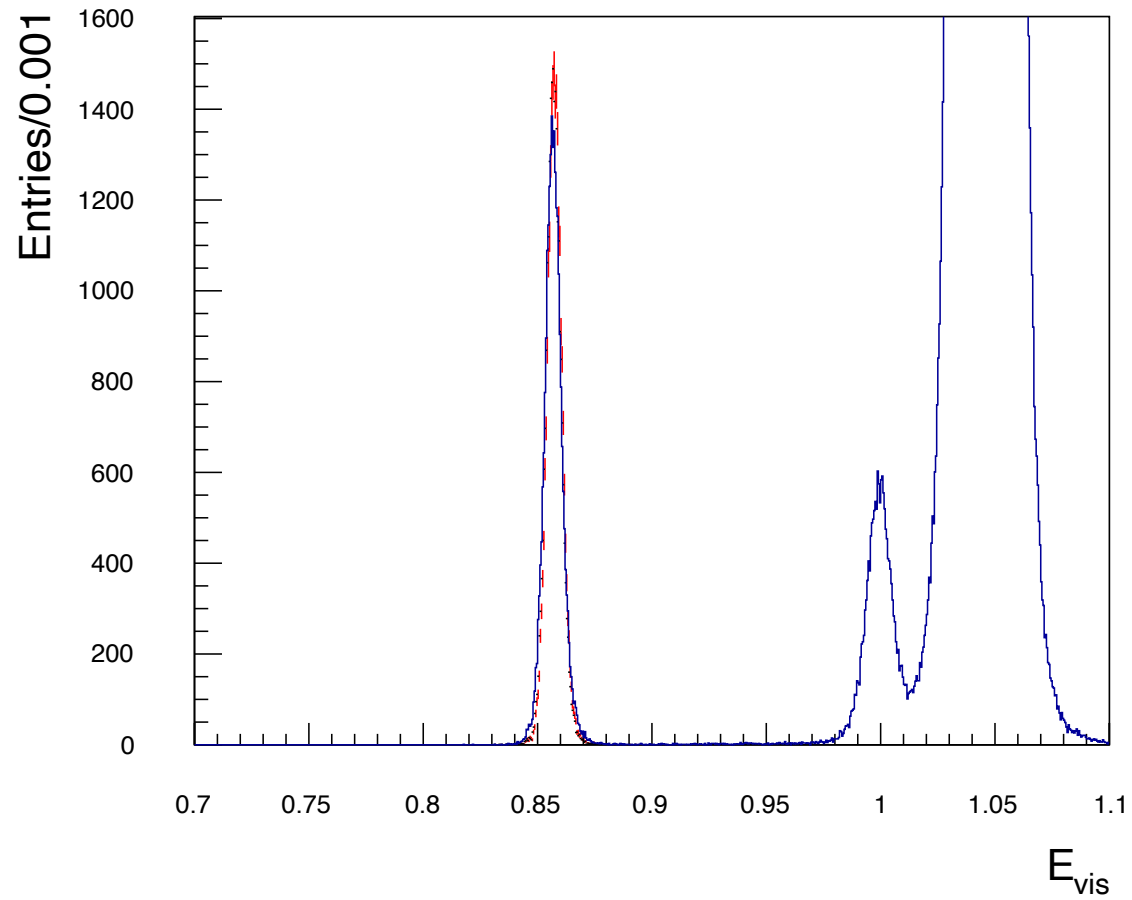


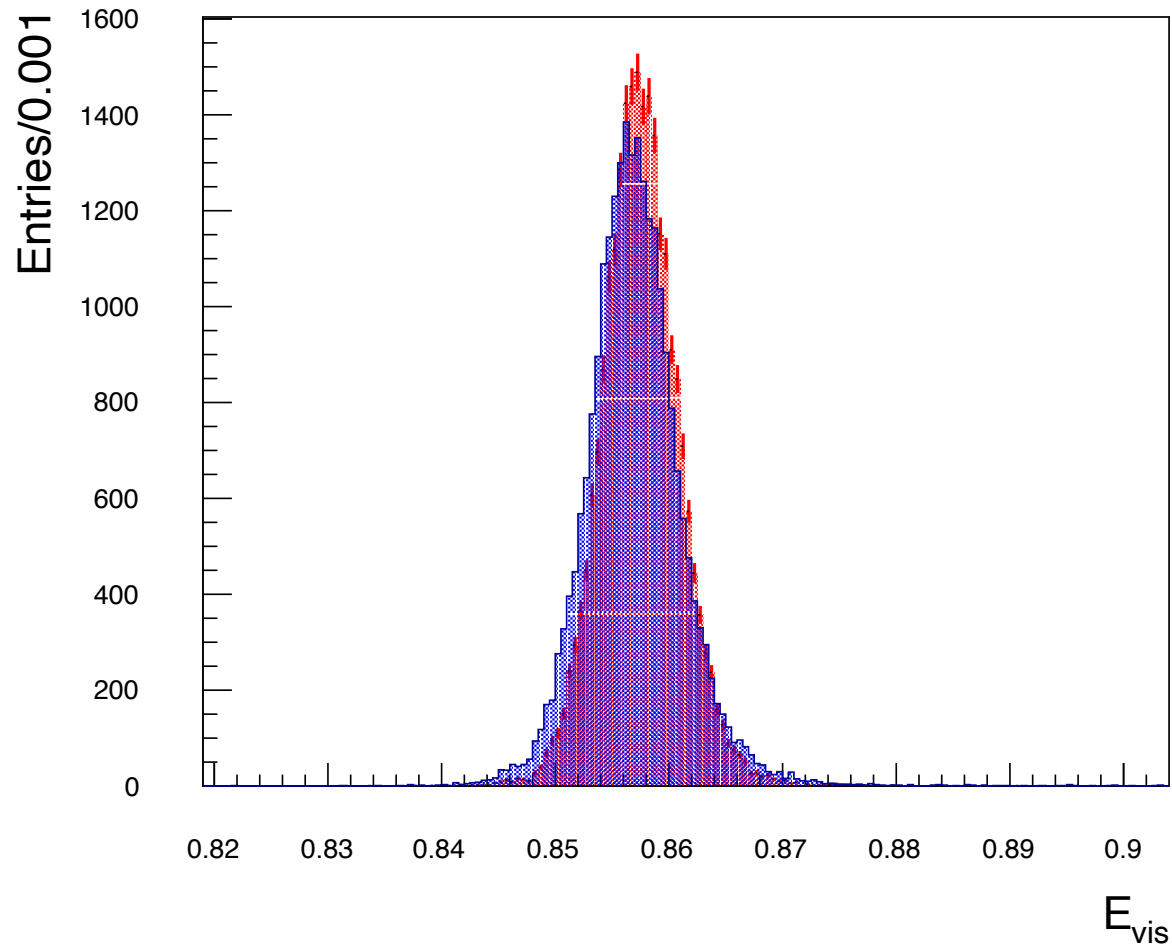
$P\bar{p}$ via
 $\psi(2S) \rightarrow J/\psi \pi^+\pi^-$

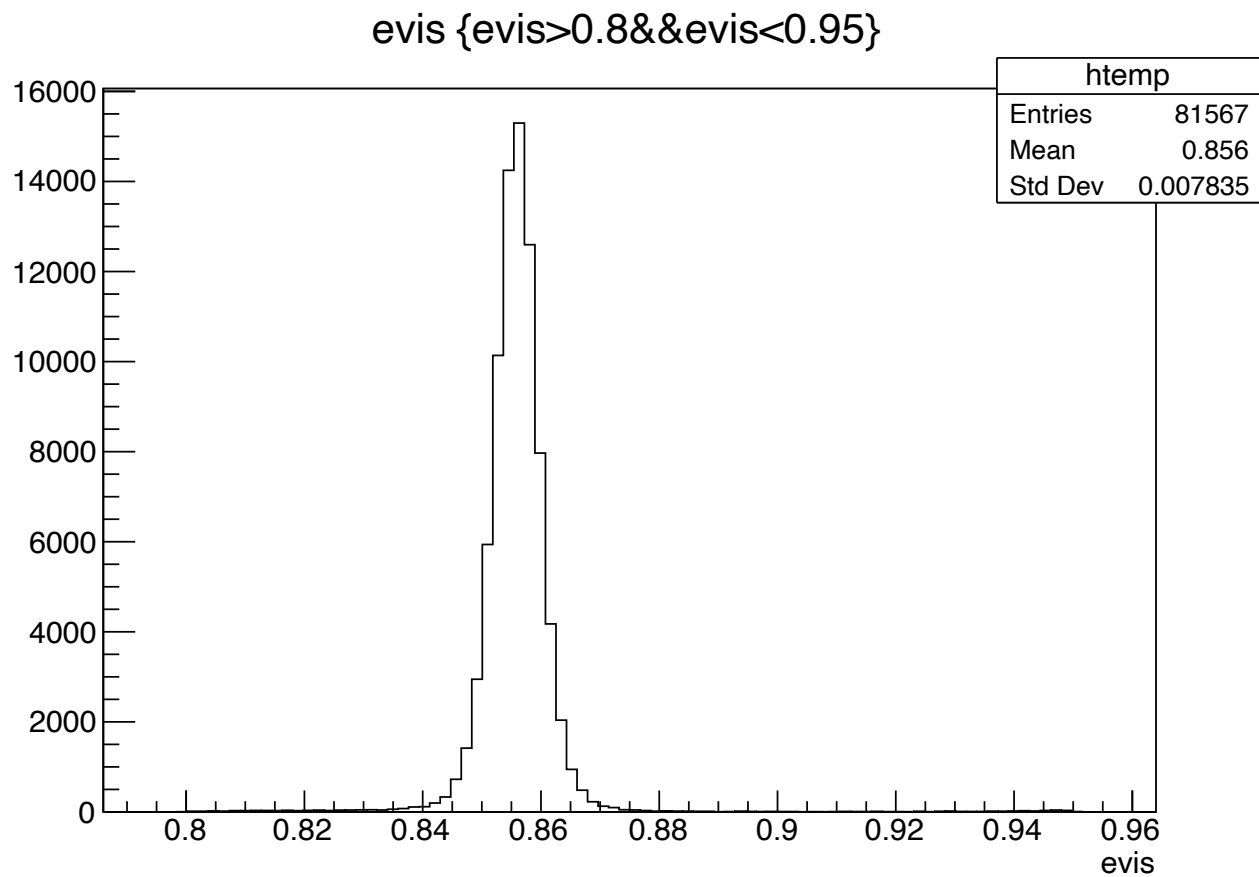
Francesca De Mori

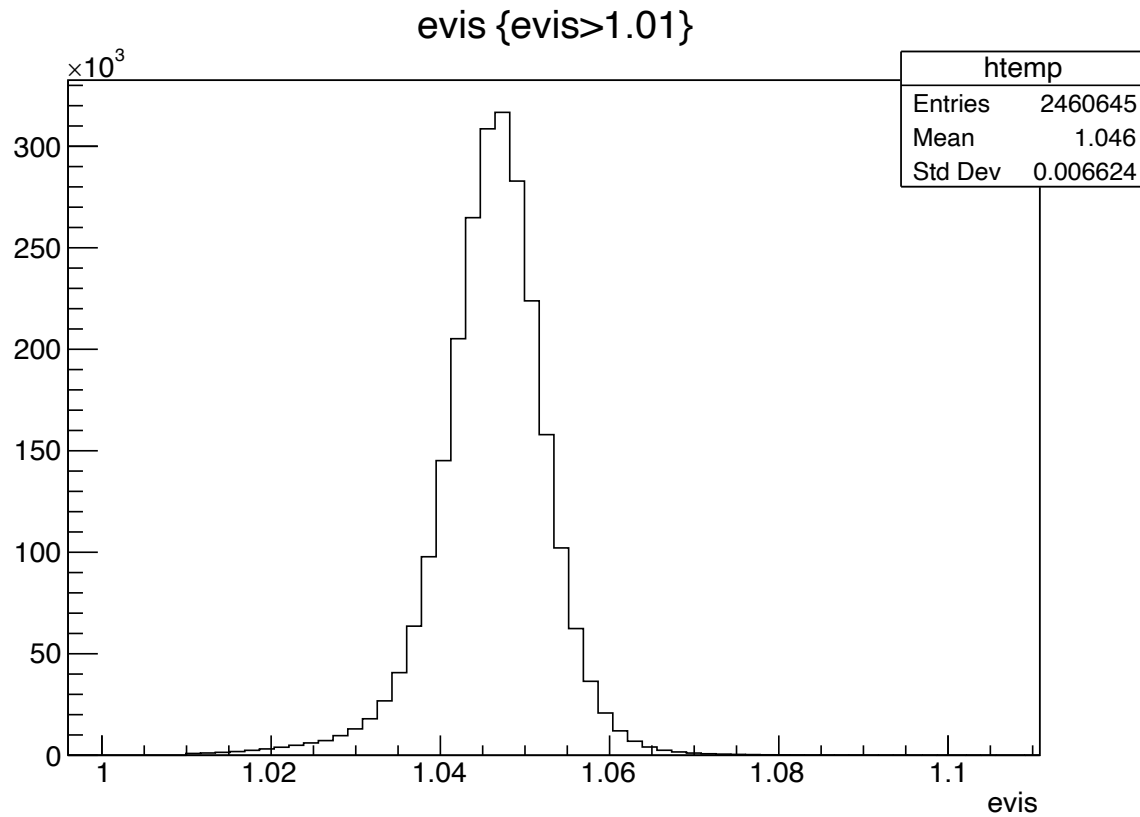


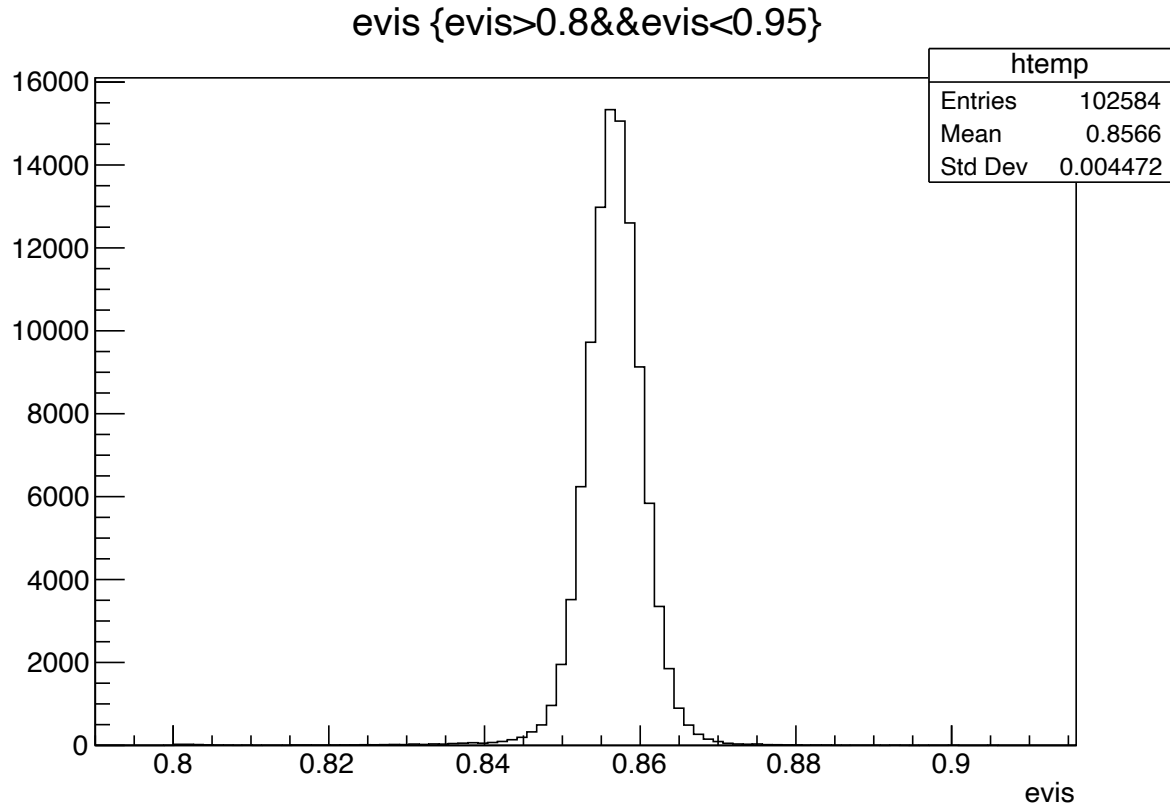












Da inclusivo 2012

102584

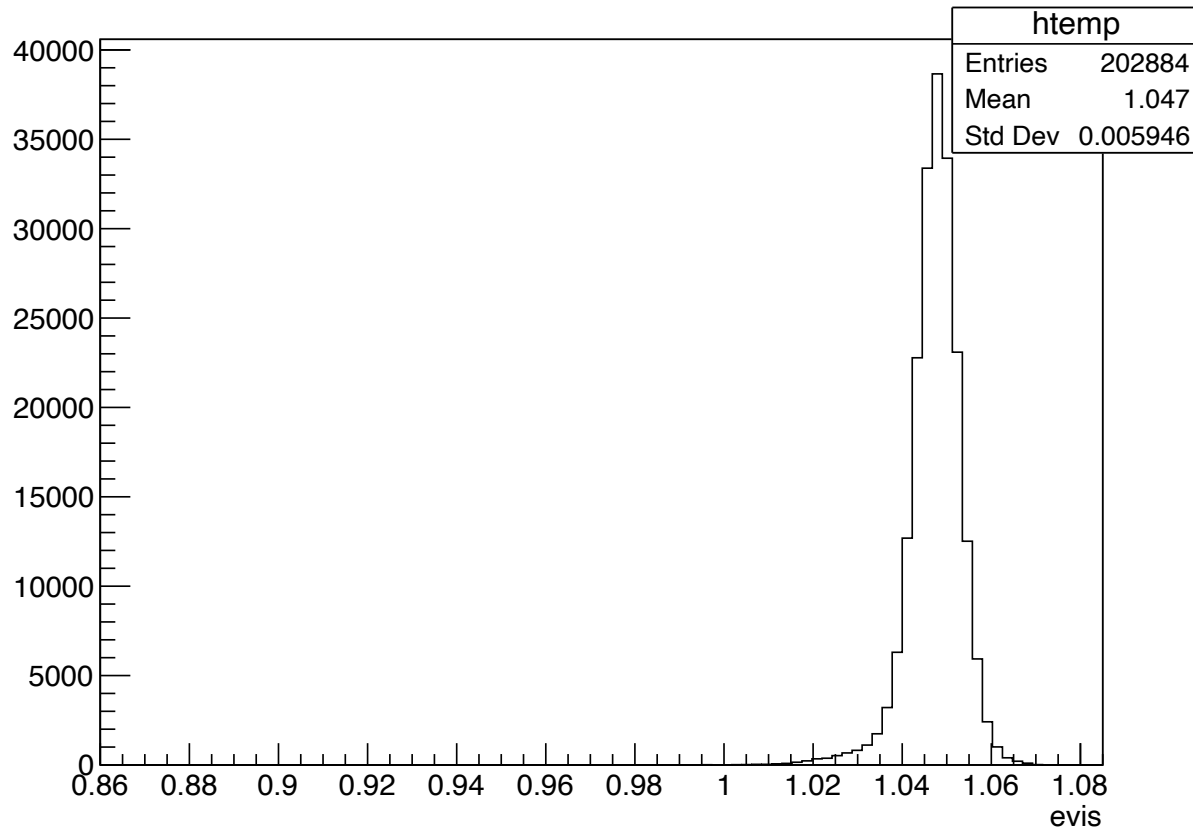
Previste (psi(2S) 400000000 x 0.00217*0.3504=304147)

Eff=0.3372

Incertezza doppia++

evis

EXC-MU



Efficienza=0.289

$$\begin{aligned} BR &= N_{pp} / N_{mumu} * 0.05961 = 0.03315 * 0.05961 * R_{eff} = 0.001976 * R_{eff} \\ &= 0.001976 * 1.1668 = 0.0023 \end{aligned}$$

Un po' piu' alto, ma sample
piccolo per efficienza ppbar
e nessuno studio dei fondi
ne' procedura di fit

