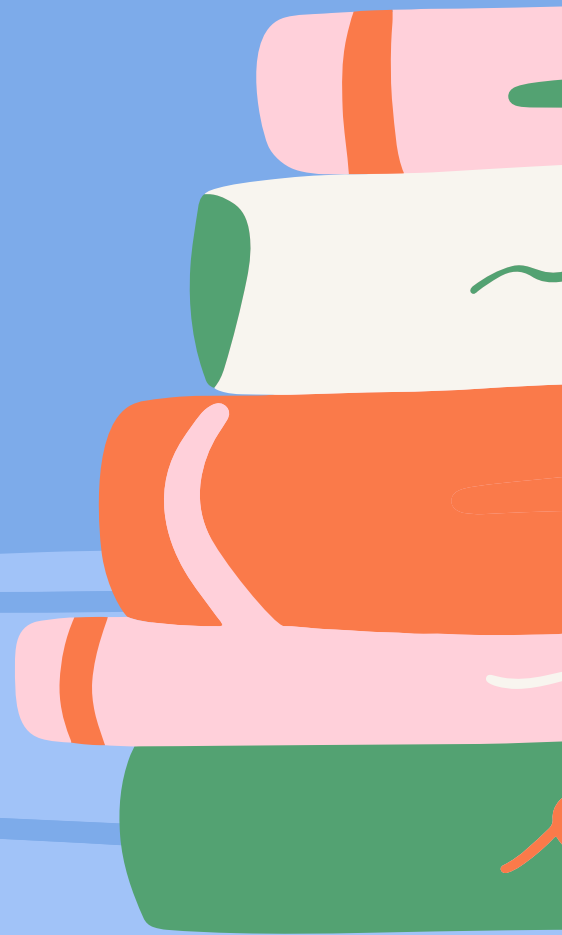


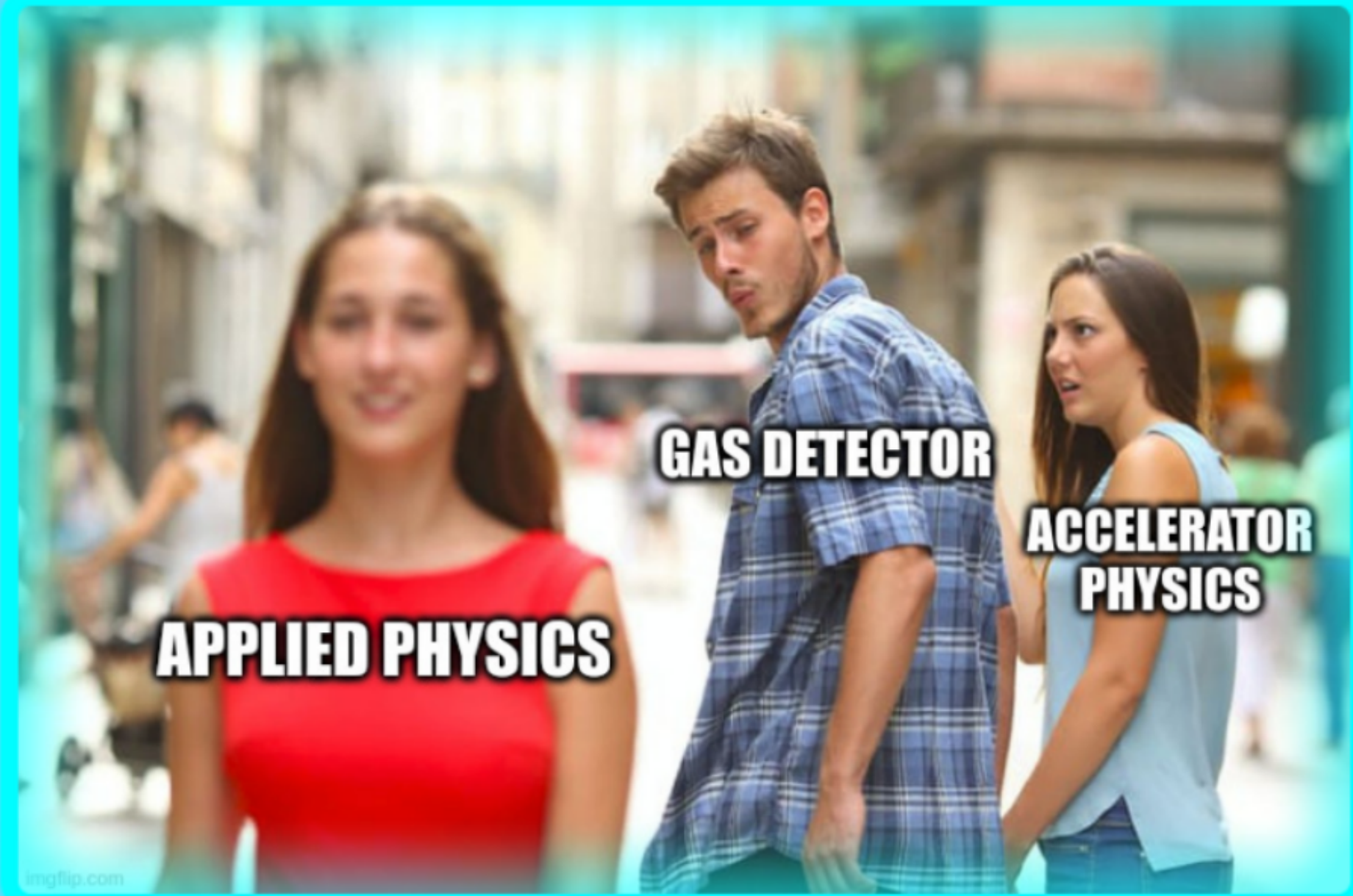
LAVORI IN CORSO A FISICA 2022

MPGD for Applied Physics

Giulio Mezzadri

FE





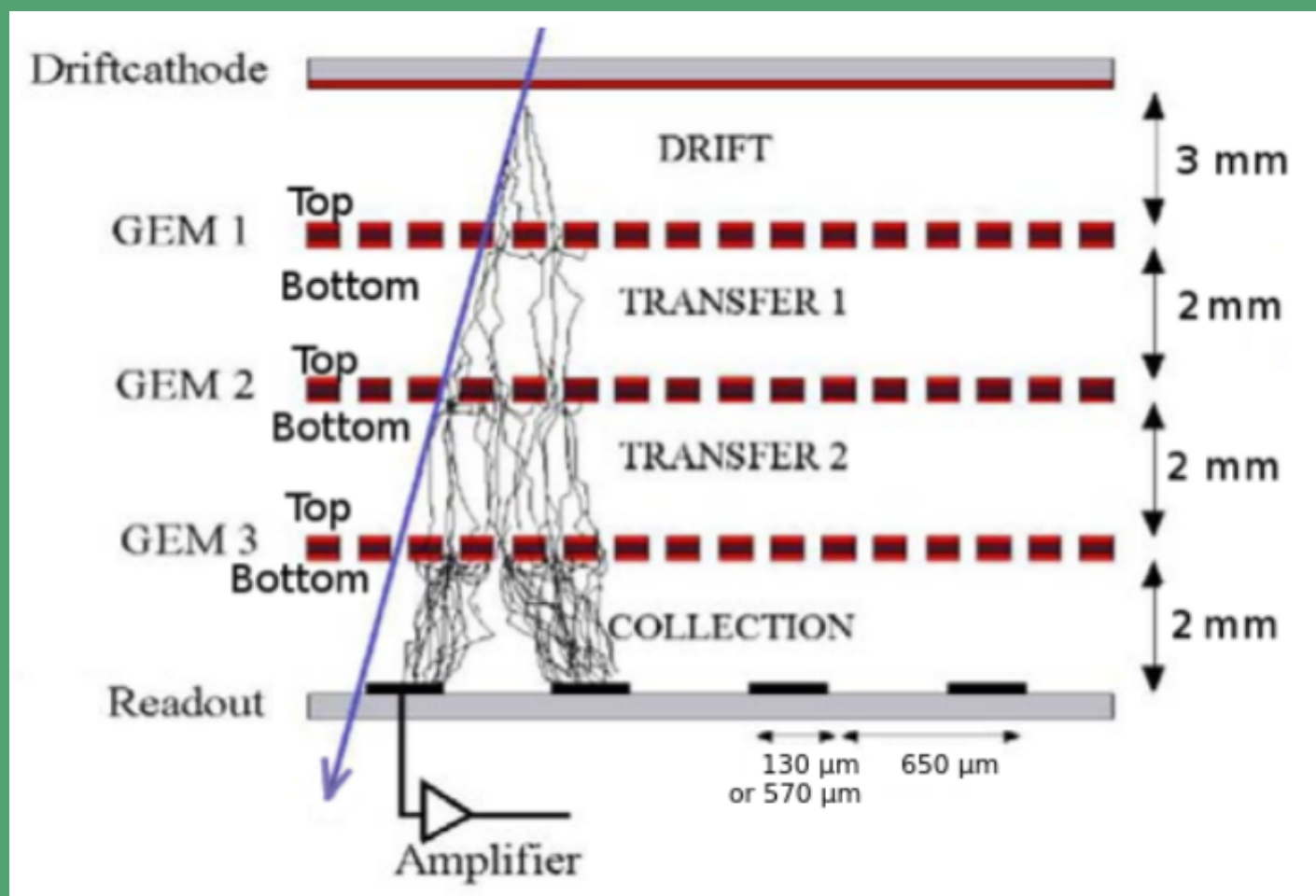
Micro Pattern Gas Detector

Gas detector with multiplication structure size of the order of (hundreds) microns

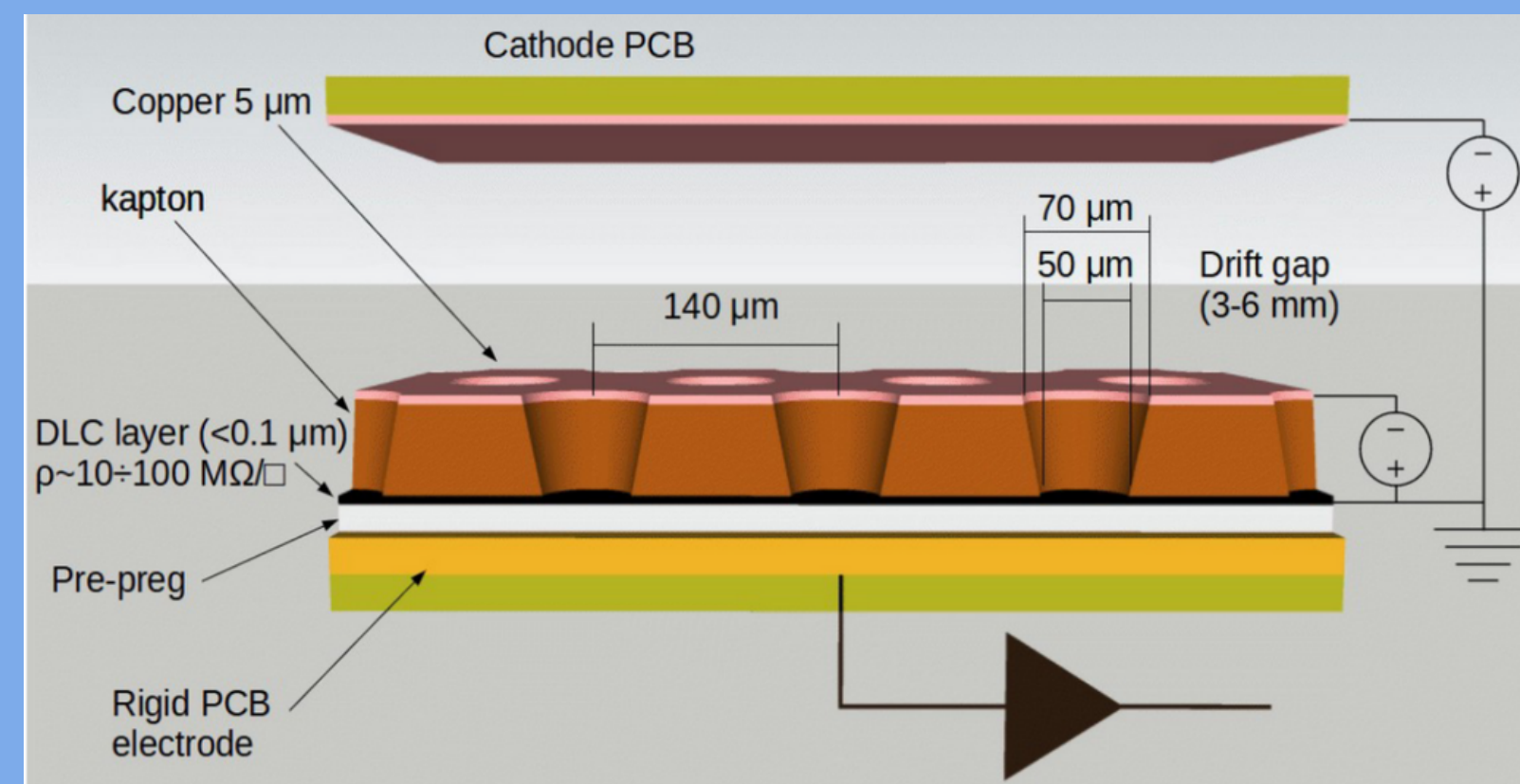


Ehm, What?

GEM



MICRO-RWELL



TO DO WHAT?

To study more everyday-like problems with instrumentation coming from our High Energy Physics experience





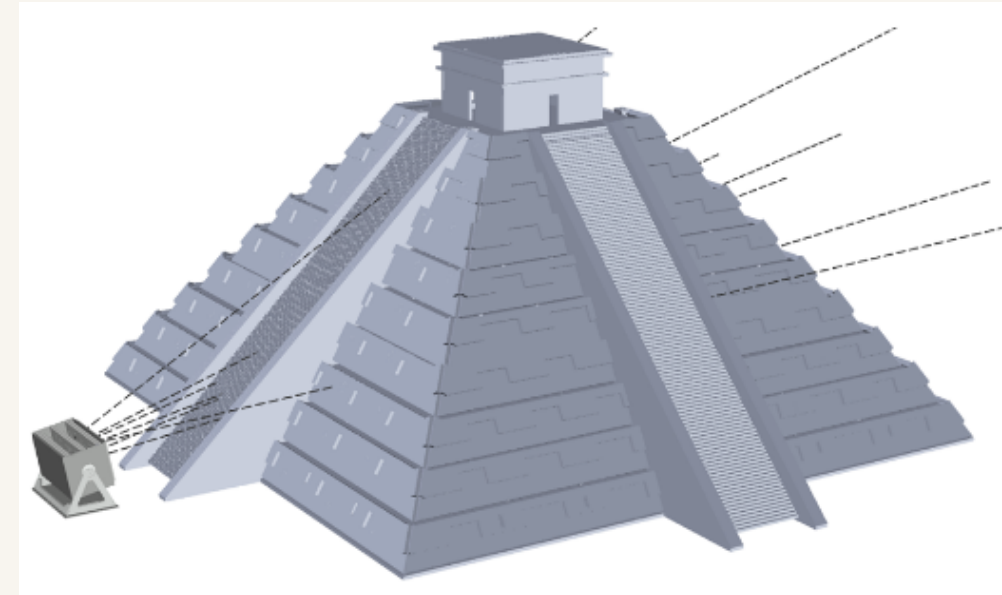
NEUTRON DETECTION

For radioprotection and monitor



MUONIC TOMOGRAPHY

To investigate big structure using cosmic rays



THESIS BEST-SELLERS

Study of the Front End electronics
for muon tomography

BT-MT

Development of cylindrical
detector for neutron detection

BT-MT

Study of the neutron detection
performance at test beam

MT

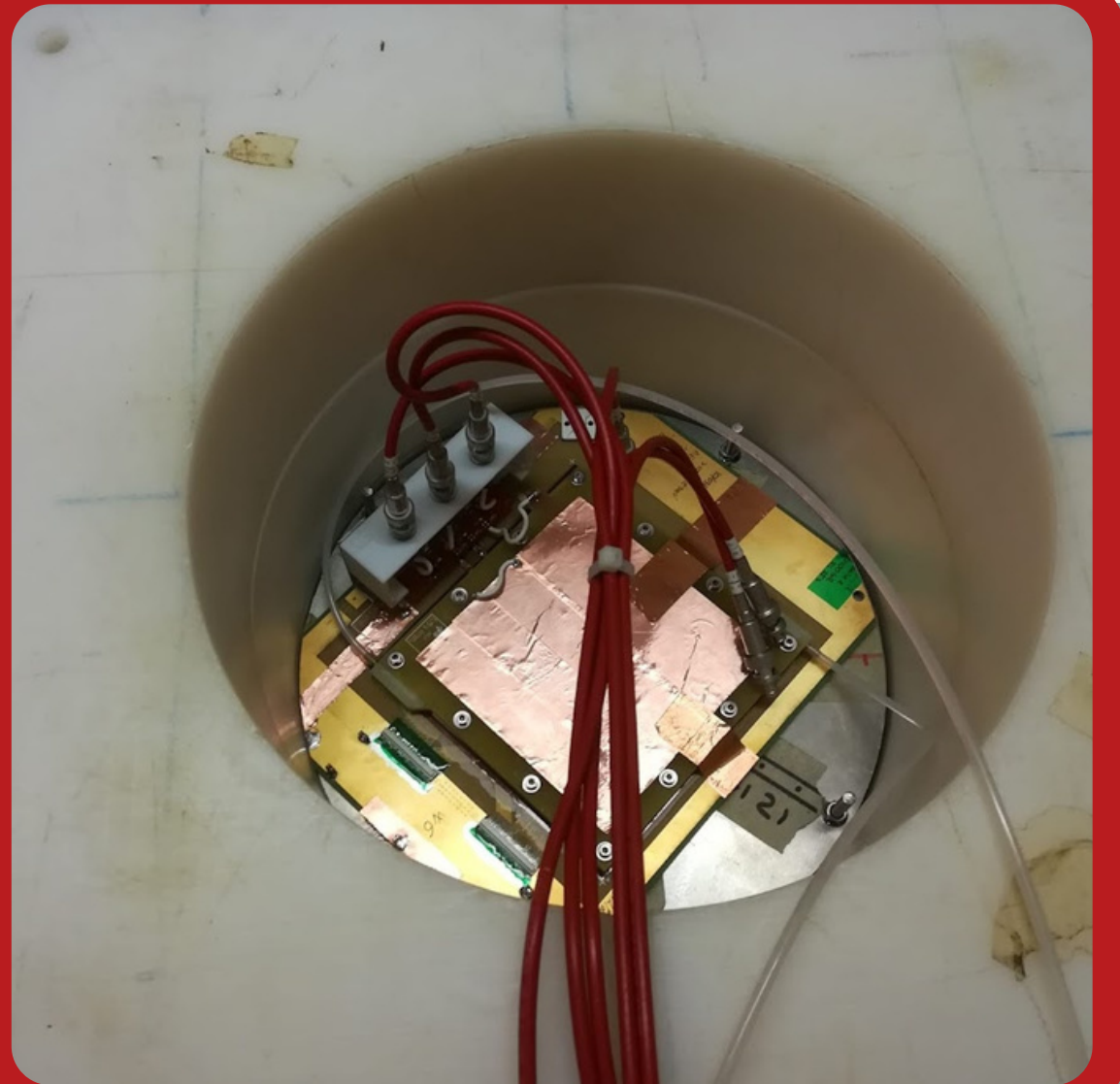
MT = Master's Thesis

BT = Bachelor's Thesis

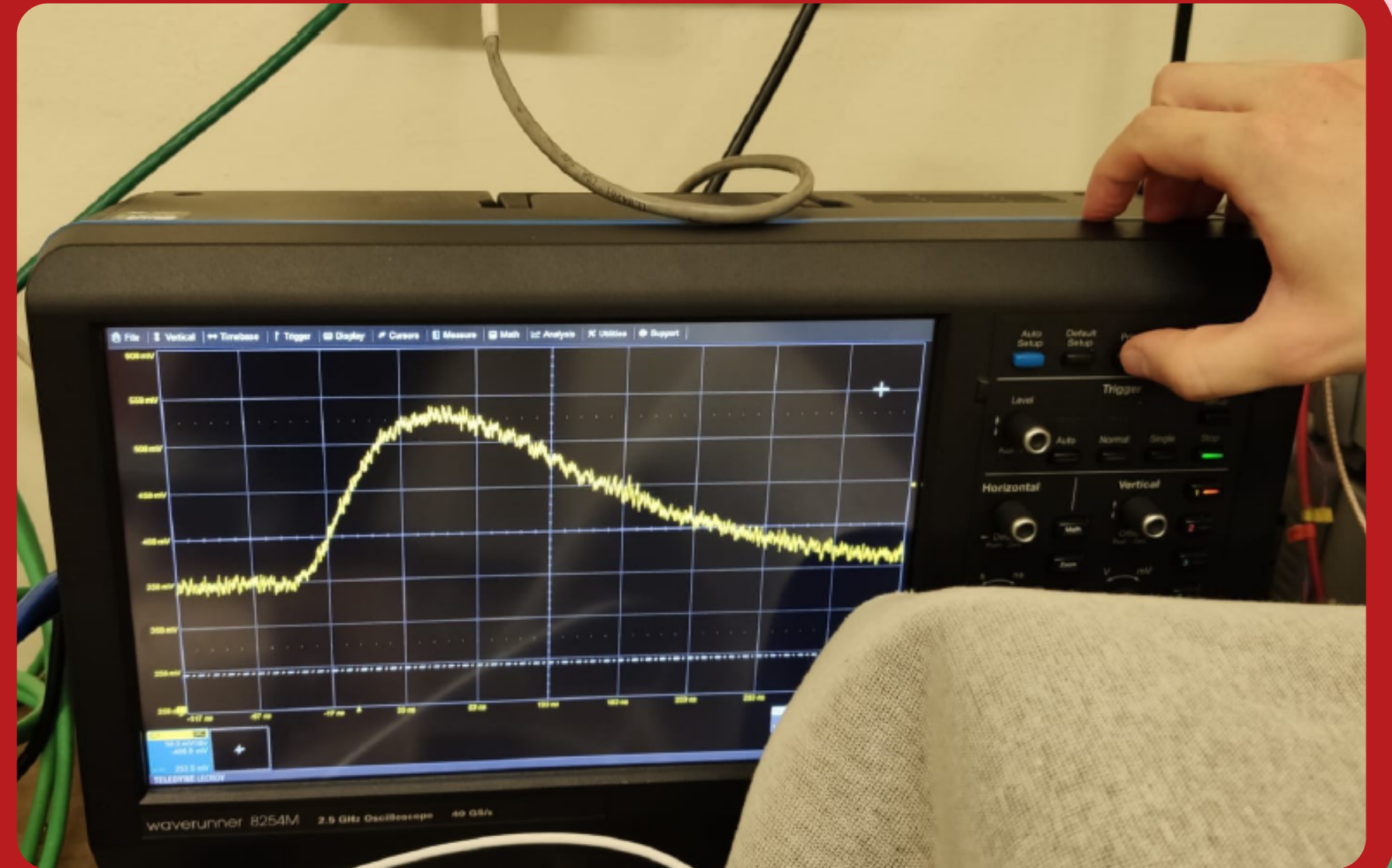


Test beam with neutron source

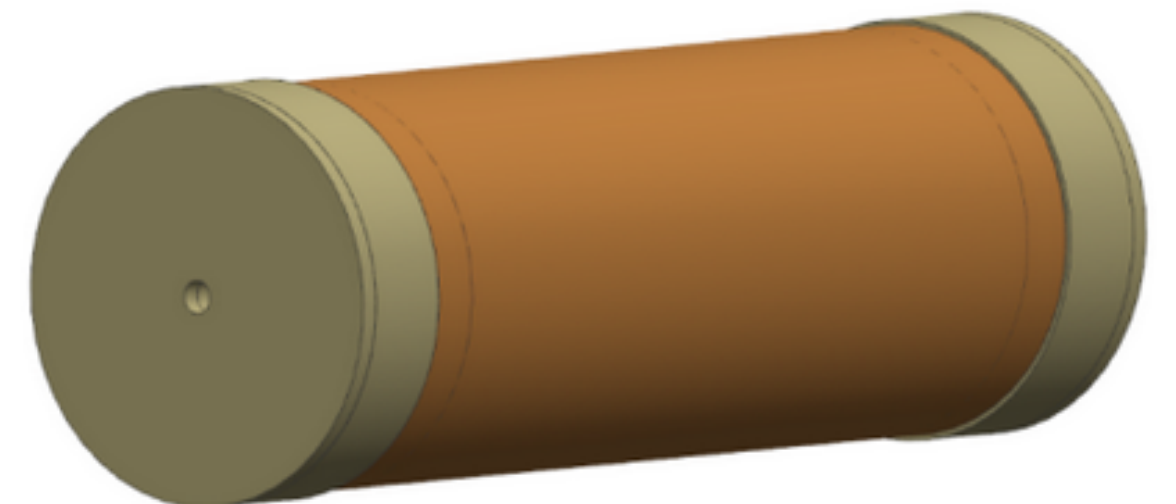
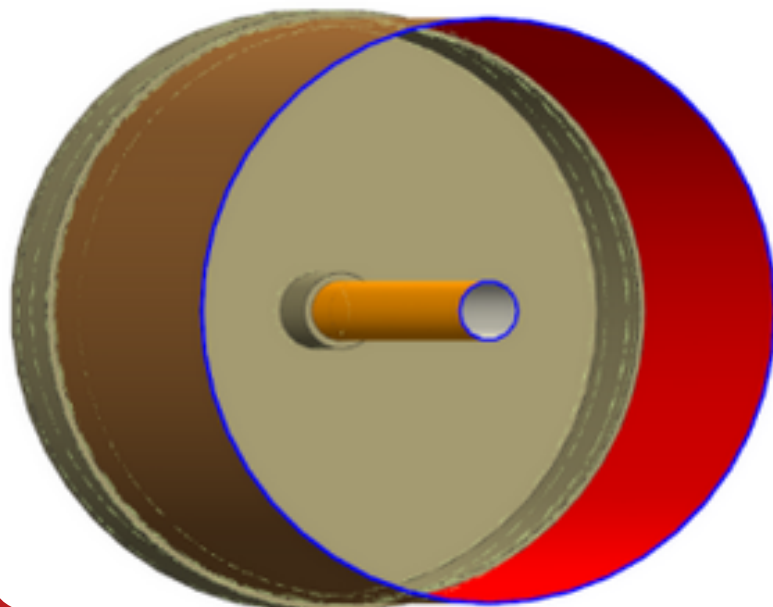
FE



Electronics for muon tomography



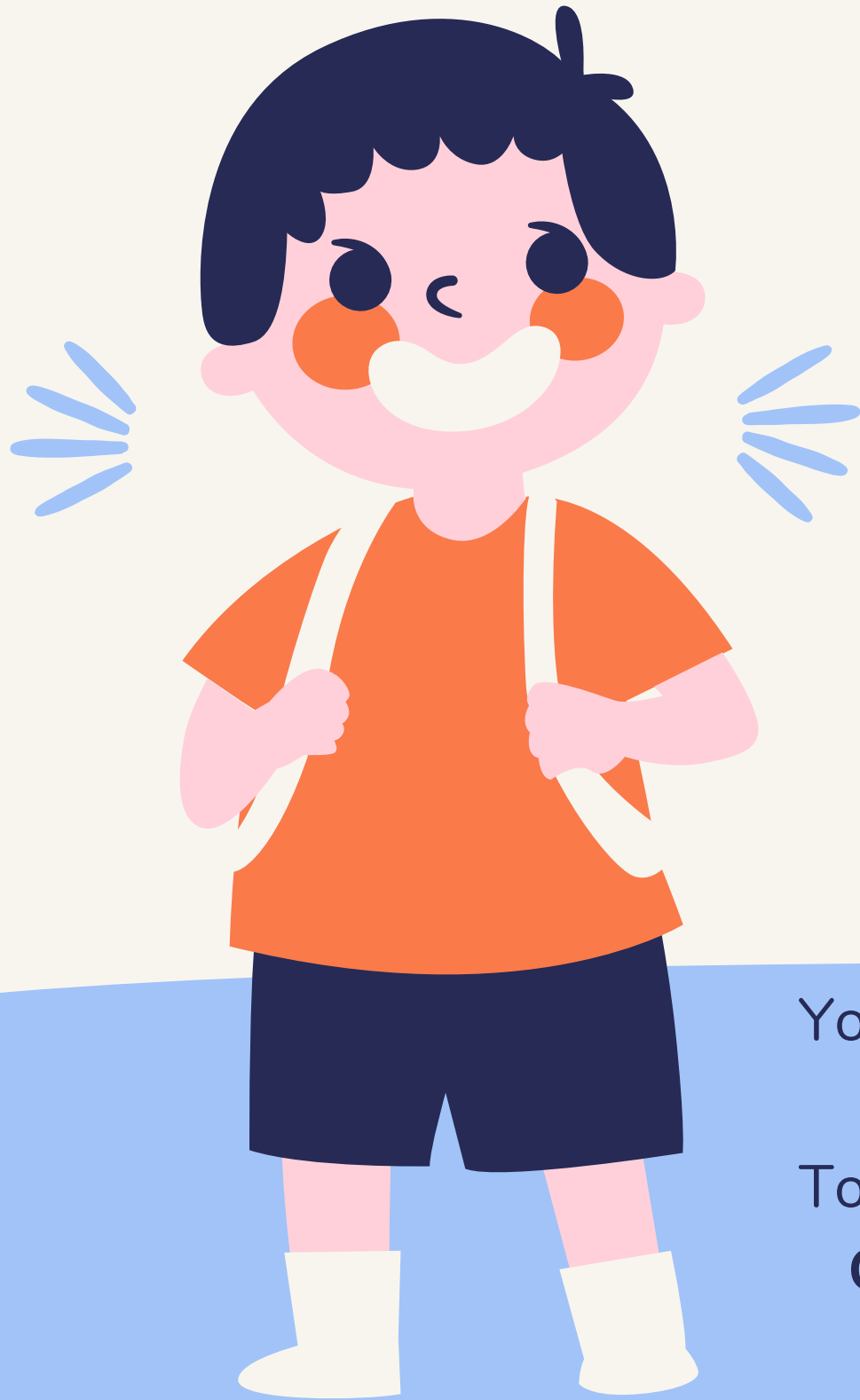
Cylindrical structure for neutron detection





FE





SEE YOU SOON!

You can find us in Blocco C
room 220, room 228, room 229, room 311

You can find us also on **Facebook** and **Instagram** at **@pifeatwork**



To reach us more formally:

Gianluigi Cibinetto -> cibinett@fe.infn.it **Ilaria Balossino** -> balossino@fe.infn.it

Isabella Garzia -> garzia@fe.infn.it **Riccardo Farinelli** -> rfarinelli@fe.infn.it

Giulio Mezzadri -> gmezzadr@fe.infn.it **Marco Scodeggio** -> mscodegg@fe.infn.it

Stefano Gramigna -> stefano.gramigna@edu.unife.it

Grazie

WHEN I DECIDE TO WORK



WITH PIFE GROUP