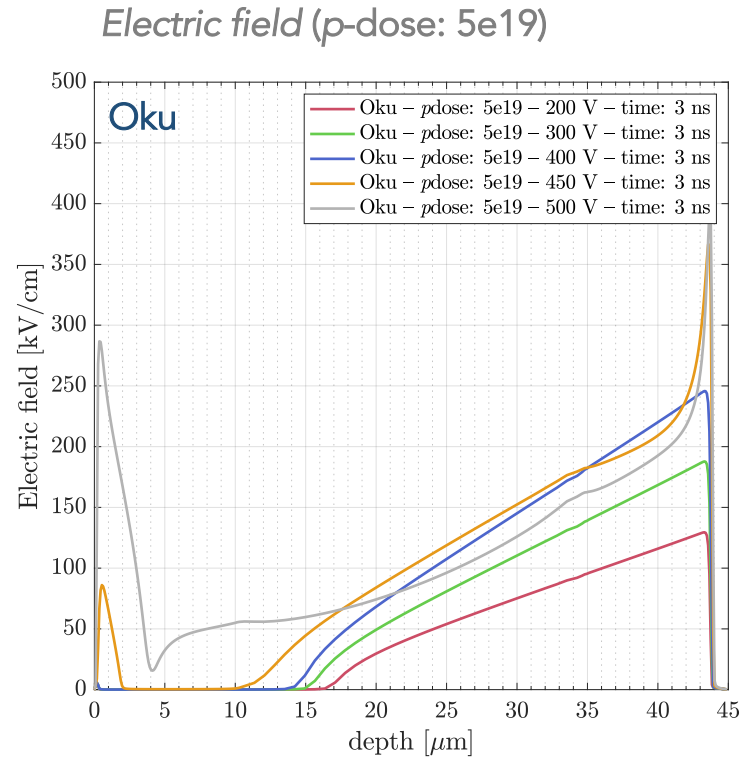


# High-energy deposition

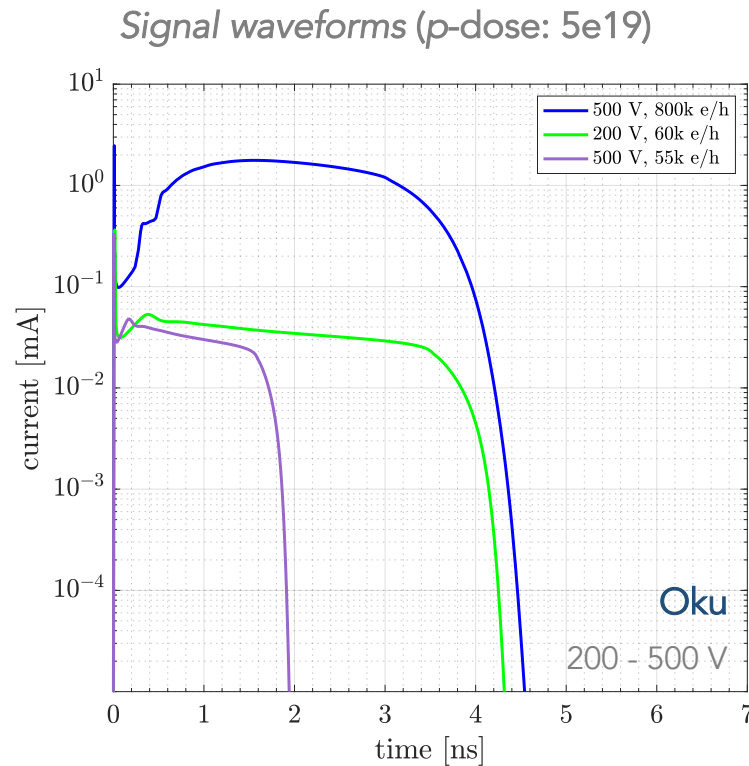
Marco Mandurrino

June 4, 2021

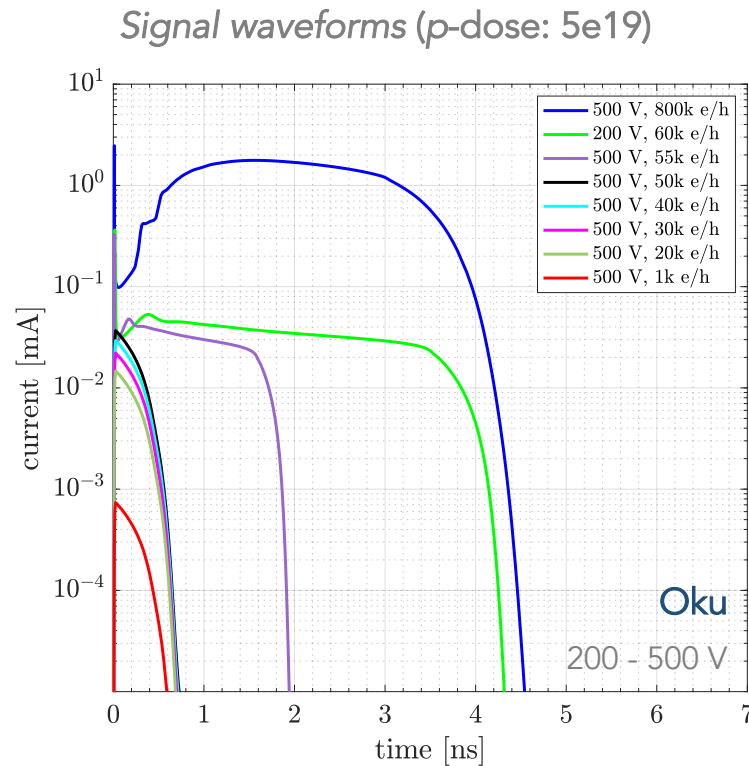
# Field collapse in a PIN diode @ 800k e/h



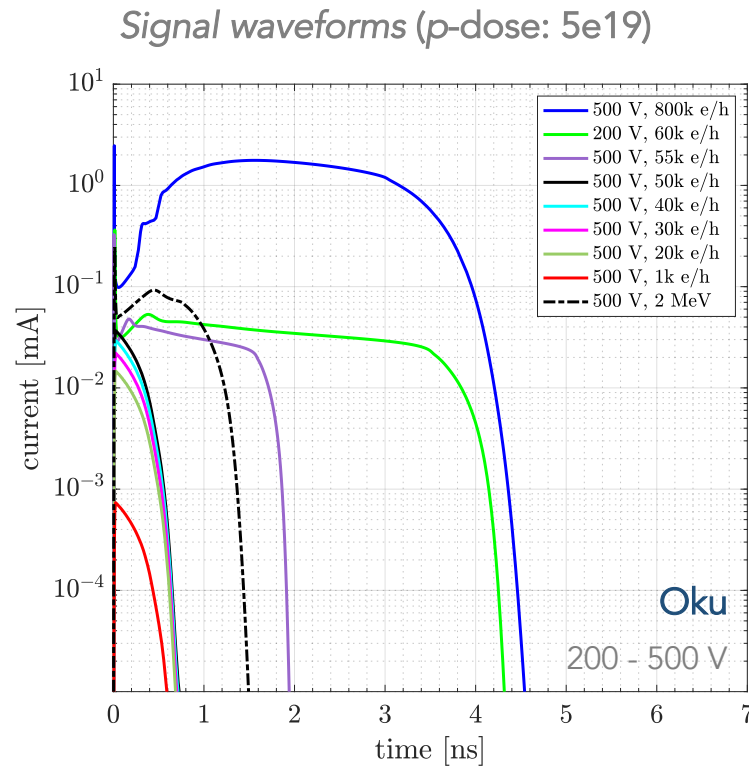
# Signals comparison in a PIN diode



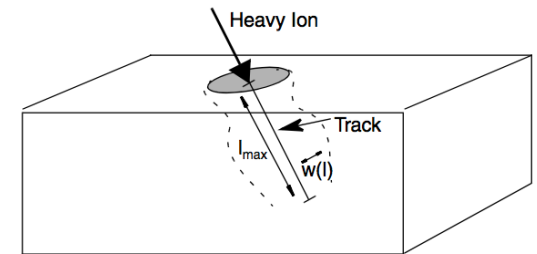
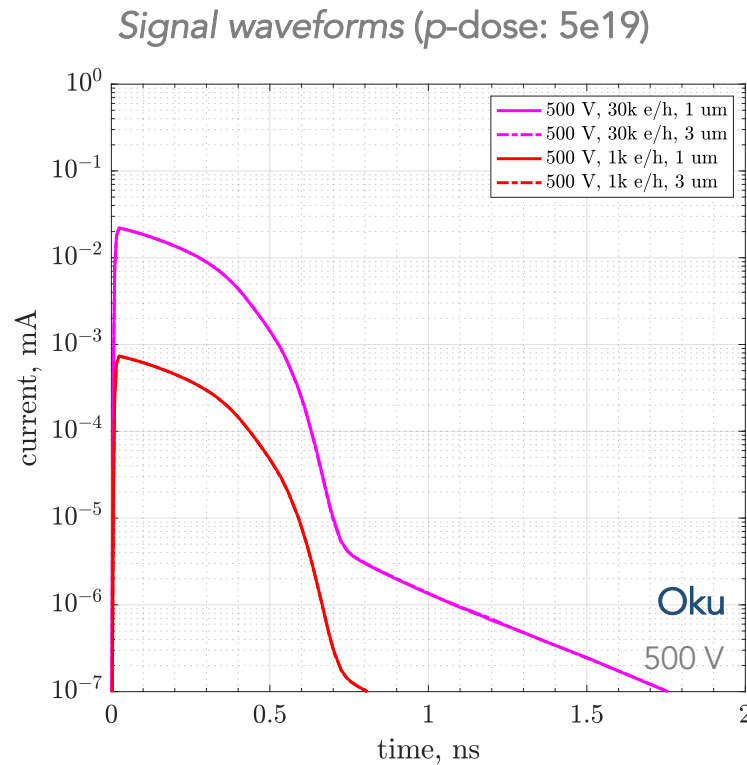
# Signals comparison in a PIN diode



# Signals comparison in a PIN diode



# Signals comparison in a PIN diode



$$G(l, w, t) = G_{LET}(l)R(w, l)T(t)$$

$$R(w, l) = \exp\left(-\left(\frac{w}{w_t(l)}\right)^2\right)$$

# Electron density with AlphaParticle

