

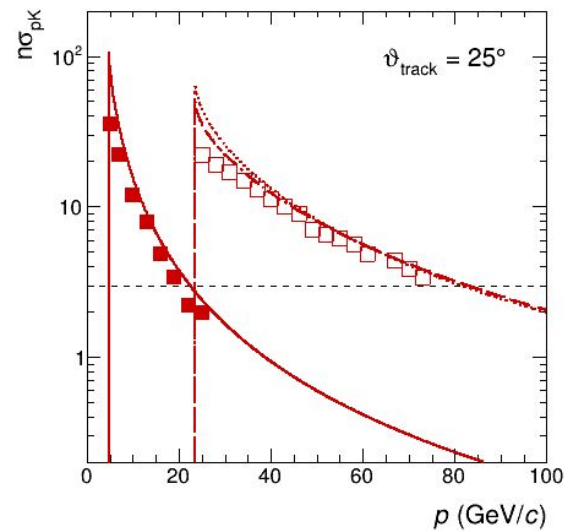
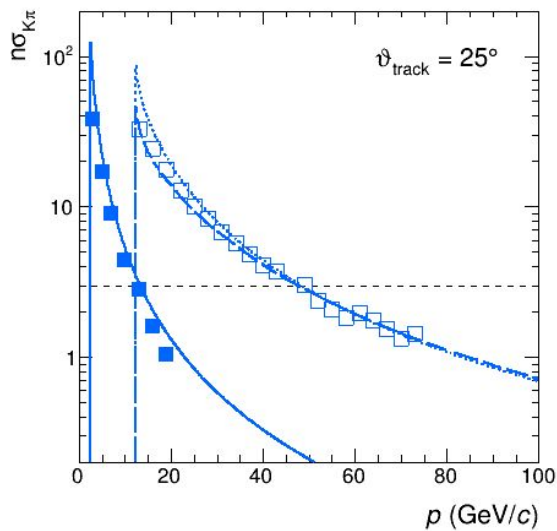
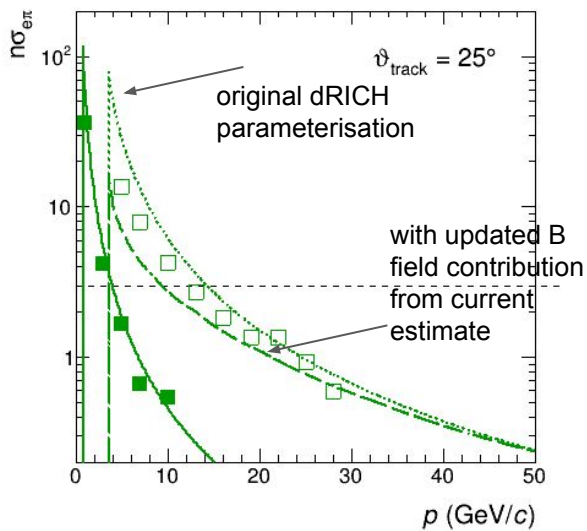
B field impact on forward RICH performance

Chandradoy Chatterjee
Roberto Preghenella

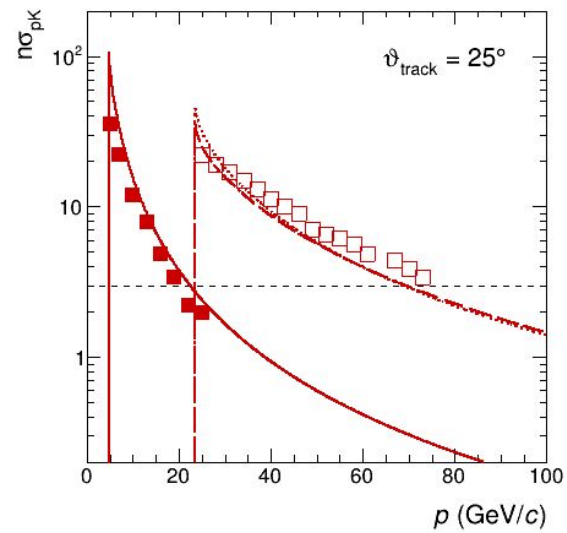
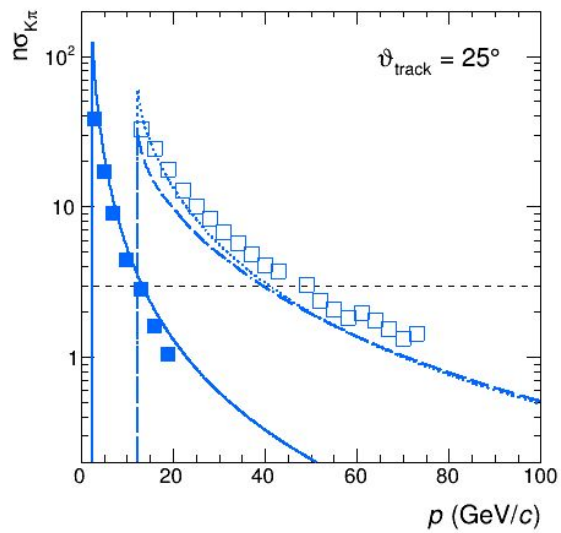
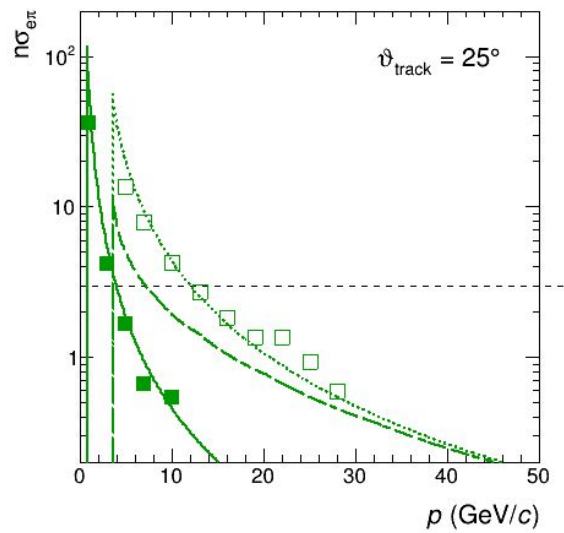
EIC_NET Monte Carlo
—
3 June 2021

default number of photons

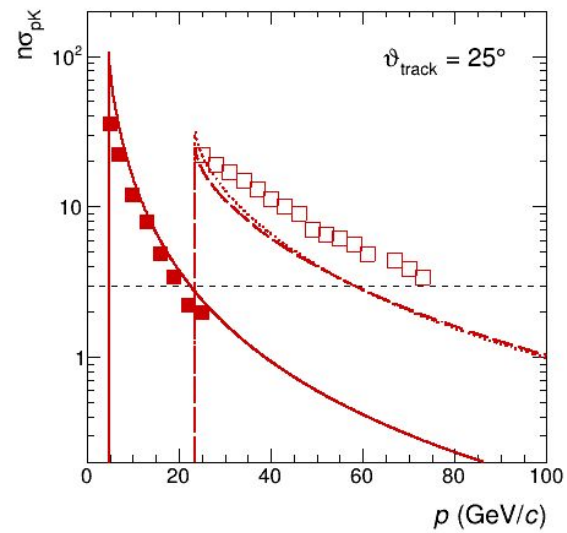
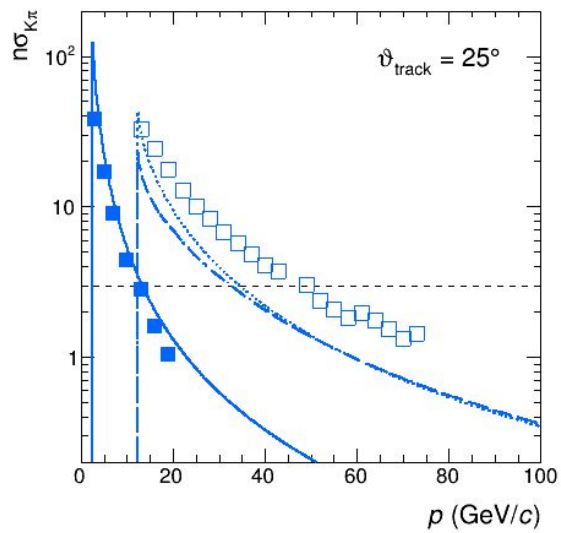
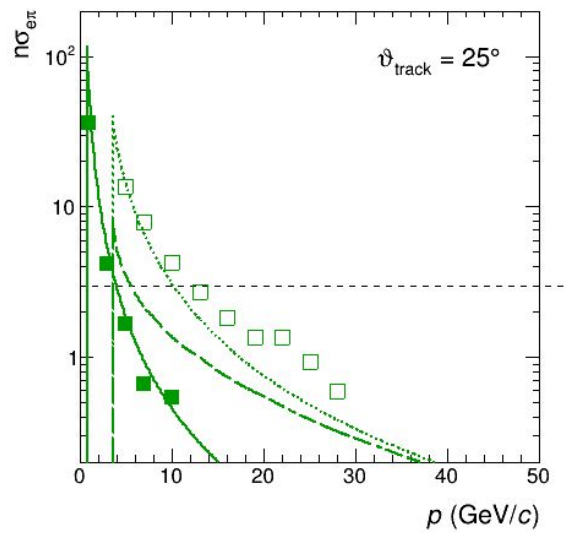
Silvia asked to look at how the separation changes with changing the number of photons



1/2 photons

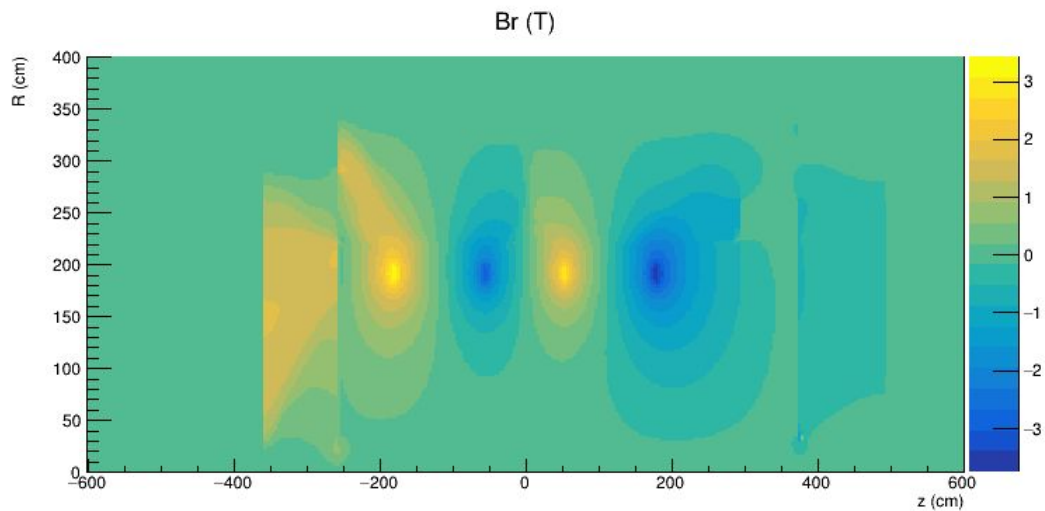
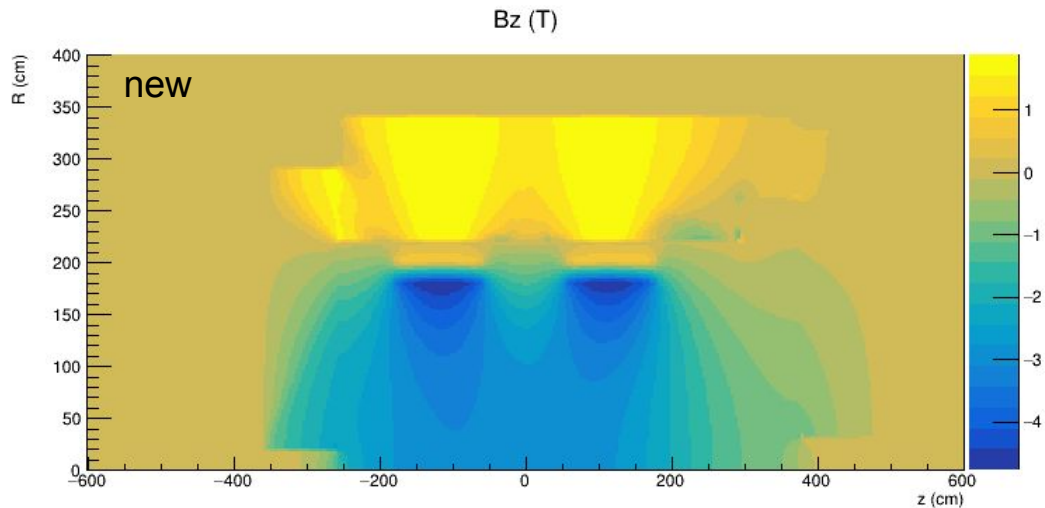
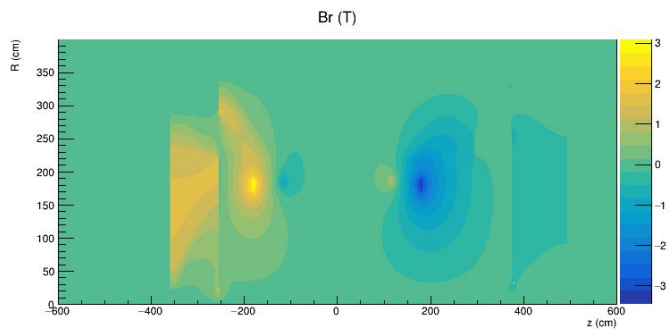
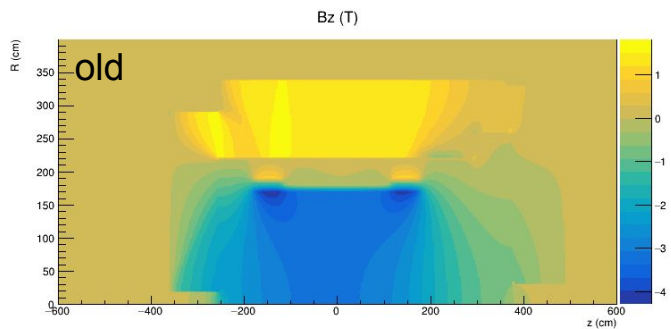


1/4 photons



New field map

looks very different at first sight



Todo

- look at the actual dRICH
- use the new field map