



DESIGN AND CONSTRUCTION OF MACHINES AND PLANTS

Precision metallic carpentry



Printing machines  
Packaging materials  
Inking groups  
Print carts  
Ventilation  
Drying tunnels  
Wiring  
Plant platforms  
Shelters

TIG Welding

**CONSTRUCTION**

Turning

PENETRANT LIQUIDS

Liquid painting

since 1991

CABINS

**40 EXPERTS**

5000 Sq m

**PROTOTYPING**

Assembly

A SINGLE INTERLOCUTOR

Design & Construction  
of machines  
and plants

Engineering Team

QUALITY

+ 25 years experience

LASER CUT

Precision metallic carpentry

Certified company

**SOLID WORKS**

SURFACE TREATMENTS

**THERMAL TREATMENTS**

POWDER COATING

**PRODUCTIVE CYCLE**

Milling

Treatments

Pneumatic plants

Electrical plants

Mechanical testing

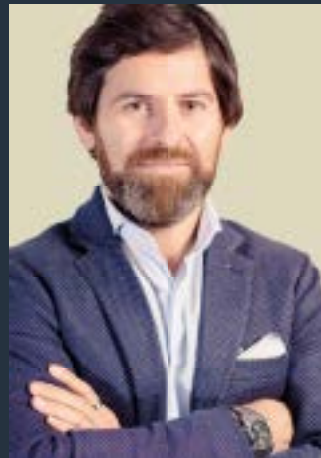
Grounding

Packaging

Transports

Exceptional transports

Guaranteed Punctuality



- ✓ A single interlocutor for the entire production cycle
- ✓ Guaranteed punctuality
- ✓ Certified company

40 EXPERTS, WHO ALWAYS TAKE CARE OF EACH ASPECT OF YOUR PROJECT

+25 YEARS EXPERIENCE

5,000 MQ OF PRODUCTION AREA

500 TONNES WORKED ANNUALLY



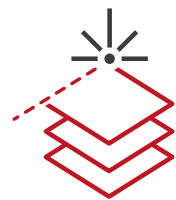
# The ideal partner for your project

We have been on the market for more than 25 years, helping our customers to find a point of contact in the design and construction of machinery and industrial plants. We have the technologies suitable for the development of a complete workflow, in order to shorten your project implementation times.

Hence, we always take care for a non-negligible market requirement: respect for delivery times. Our production cycle is entirely managed by an ERP software, which allows a constant monitoring of your project's development, in order to ensure an excellent quality of the final product.



TECHNICAL  
DEPARTMENT



CUT AND FOLD



WELDING



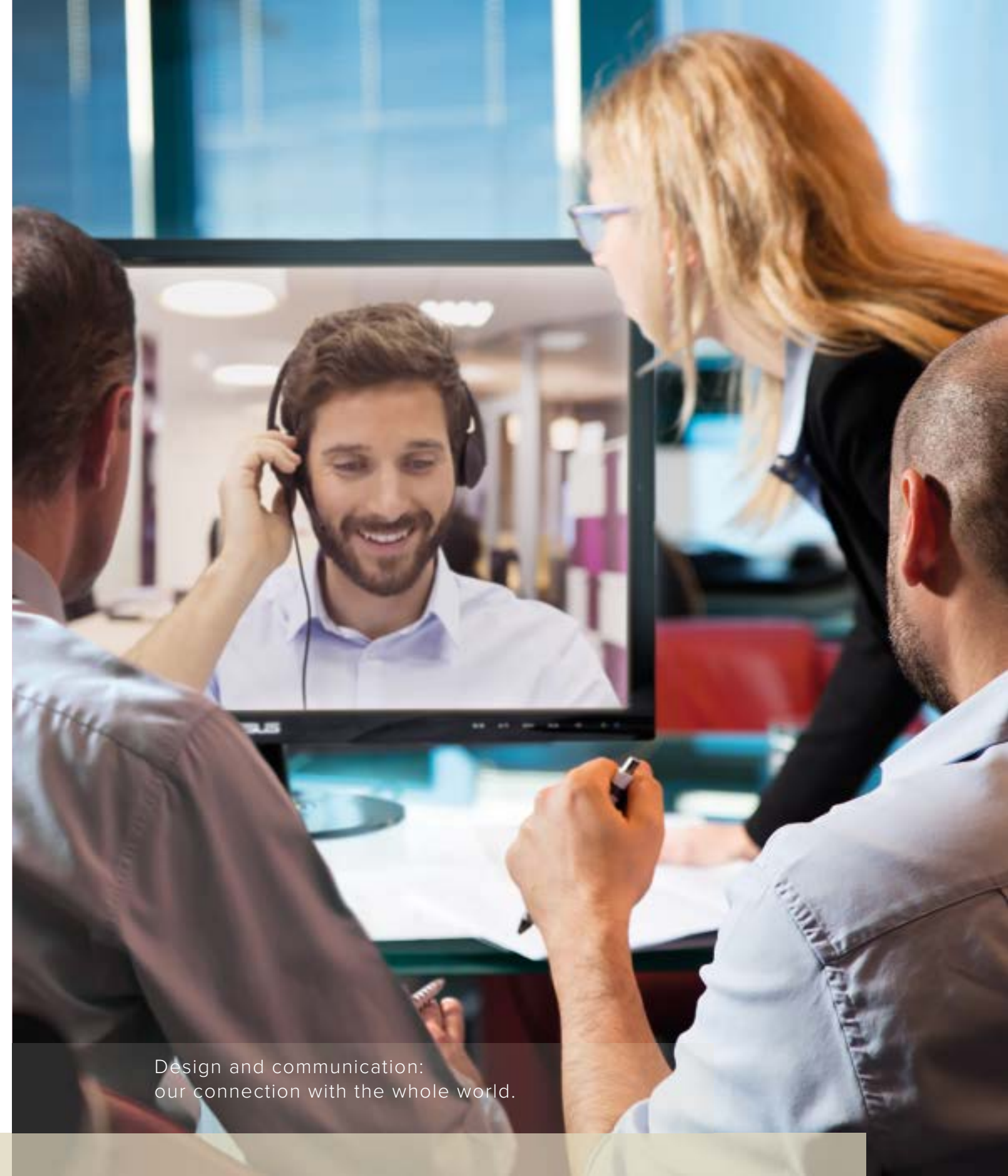
PAINTING



ASSEMBLY



TRANSPORT



Design and communication:  
our connection with the whole world.



[illegible]

Pado: 00000 SCATOLA LAMIERA  
 Fghe: 00000 CORPO SCATOLA  
 Pm: 0 0.00 Pz: 0.00 1 Slido % Slido Rilev. Slido 0.00  
 Fase: Taglio Laser Gest. Mag. Automatico Validità  
 Note: Inizio  
 Approvato da: P.00000 Revisato da: B.00000 Fine  
 Riferimento: Creazione 24/10/2005  
 Sistema Elettrico: Note Progettazione Modificato 27/12/2005

| Descrizione                         | Quantità | Unità | Prezzo | Totale |
|-------------------------------------|----------|-------|--------|--------|
| SCATOLA LAMIERA                     | 1        |       | 0.00   | 0.00   |
| CORPO SCATOLA                       | 1        |       | 0.00   | 0.00   |
| LAMIERA 1000x1200x1.5               | 1        | kg    | 1.176  | 1.176  |
| SCATOLA LAMIERA 1000x1200x1.5       | 1        |       | 0.00   | 0.00   |
| Taglio laser                        | 1        |       | 0.00   | 0.00   |
| Progettazione                       | 1        |       | 0.00   | 0.00   |
| Verifica e collaudi                 | 1        |       | 0.00   | 0.00   |
| CORPO SCATOLA LAMIERA 1000x1200x1.5 | 1        |       | 0.00   | 0.00   |
| LAMIERA 1000x1200x1.5               | 1        | kg    | 1.007  | 1.007  |
| CORPO SCATOLA LAMIERA 1000x1200x1.5 | 1        |       | 0.00   | 0.00   |
| Taglio laser                        | 1        |       | 0.00   | 0.00   |
| Progettazione                       | 1        |       | 0.00   | 0.00   |
| Verifica e collaudi                 | 1        |       | 0.00   | 0.00   |
| VITE                                | 4        |       | 0.00   | 0.00   |
| PARTE LAMIERA                       | 4        |       | 0.00   | 0.00   |
| VITE 10x10x100                      | 4        |       | 0.00   | 0.00   |
| SCATOLA LAMIERA 1000x1200x1.5       | 4        |       | 0.00   | 0.00   |
| Taglio laser                        | 1        |       | 0.00   | 0.00   |
| Progettazione                       | 1        |       | 0.00   | 0.00   |
| Verifica e collaudi                 | 1        |       | 0.00   | 0.00   |

00000 SCATOLA LAMIERA  
 00000 CORPO SCATOLA  
 00000 LAMIERA 1000x1200x1.5  
 00000 SCATOLA LAMIERA 1000x1200x1.5  
 00000 TAGLIO LASER  
 00000 PROGETTAZIONE  
 00000 VERIFICA E COLLAUDI  
 00000 VITE  
 00000 PARTE LAMIERA  
 00000 VITE 10x10x100  
 00000 SCATOLA LAMIERA 1000x1200x1.5  
 00000 TAGLIO LASER  
 00000 PROGETTAZIONE  
 00000 VERIFICA E COLLAUDI

| Component             | Material | Weight (kg) | Volume (m³) |
|-----------------------|----------|-------------|-------------|
| SCATOLA LAMIERA       | Aluminum | 0.15        | 0.0001      |
| CORPO SCATOLA         | Aluminum | 0.15        | 0.0001      |
| LAMPADA               | Aluminum | 1.176       | 0.0004      |
| SCATOLA LAMIERA 18/10 | Aluminum | 0.007       | 0.0002      |
| LAMPADA 18/10         | Aluminum | 0.007       | 0.0002      |
| SCATOLA LAMIERA 18/10 | Aluminum | 0.007       | 0.0002      |
| LAMPADA 18/10         | Aluminum | 0.007       | 0.0002      |
| SCATOLA LAMIERA 18/10 | Aluminum | 0.007       | 0.0002      |
| LAMPADA 18/10         | Aluminum | 0.007       | 0.0002      |
| SCATOLA LAMIERA 18/10 | Aluminum | 0.007       | 0.0002      |
| LAMPADA 18/10         | Aluminum | 0.007       | 0.0002      |

| Component             | Material | Weight (kg) | Volume (m³) |
|-----------------------|----------|-------------|-------------|
| SCATOLA LAMIERA       | Aluminum | 0.15        | 0.0001      |
| CORPO SCATOLA         | Aluminum | 0.15        | 0.0001      |
| LAMPADA               | Aluminum | 1.176       | 0.0004      |
| SCATOLA LAMIERA 18/10 | Aluminum | 0.007       | 0.0002      |
| LAMPADA 18/10         | Aluminum | 0.007       | 0.0002      |
| SCATOLA LAMIERA 18/10 | Aluminum | 0.007       | 0.0002      |
| LAMPADA 18/10         | Aluminum | 0.007       | 0.0002      |
| SCATOLA LAMIERA 18/10 | Aluminum | 0.007       | 0.0002      |
| LAMPADA 18/10         | Aluminum | 0.007       | 0.0002      |
| SCATOLA LAMIERA 18/10 | Aluminum | 0.007       | 0.0002      |
| LAMPADA 18/10         | Aluminum | 0.007       | 0.0002      |

Pado: 00000 SCATOLA LAMIERA  
 Fghe: 00000 CORPO SCATOLA  
 Pm: 0 0.00 Pz: 0.00 1 Slido % Slido Rilev. Slido 0.00  
 Fase: Taglio Laser Gest. Mag. Automatico Validità  
 Note: Inizio  
 Approvato da: 00000 Revisato da: 00000 Fine  
 Riferimento: Creazione 24/10/2005  
 Sistema Elettrico: Note Progettazione Modificato 27/12/2005

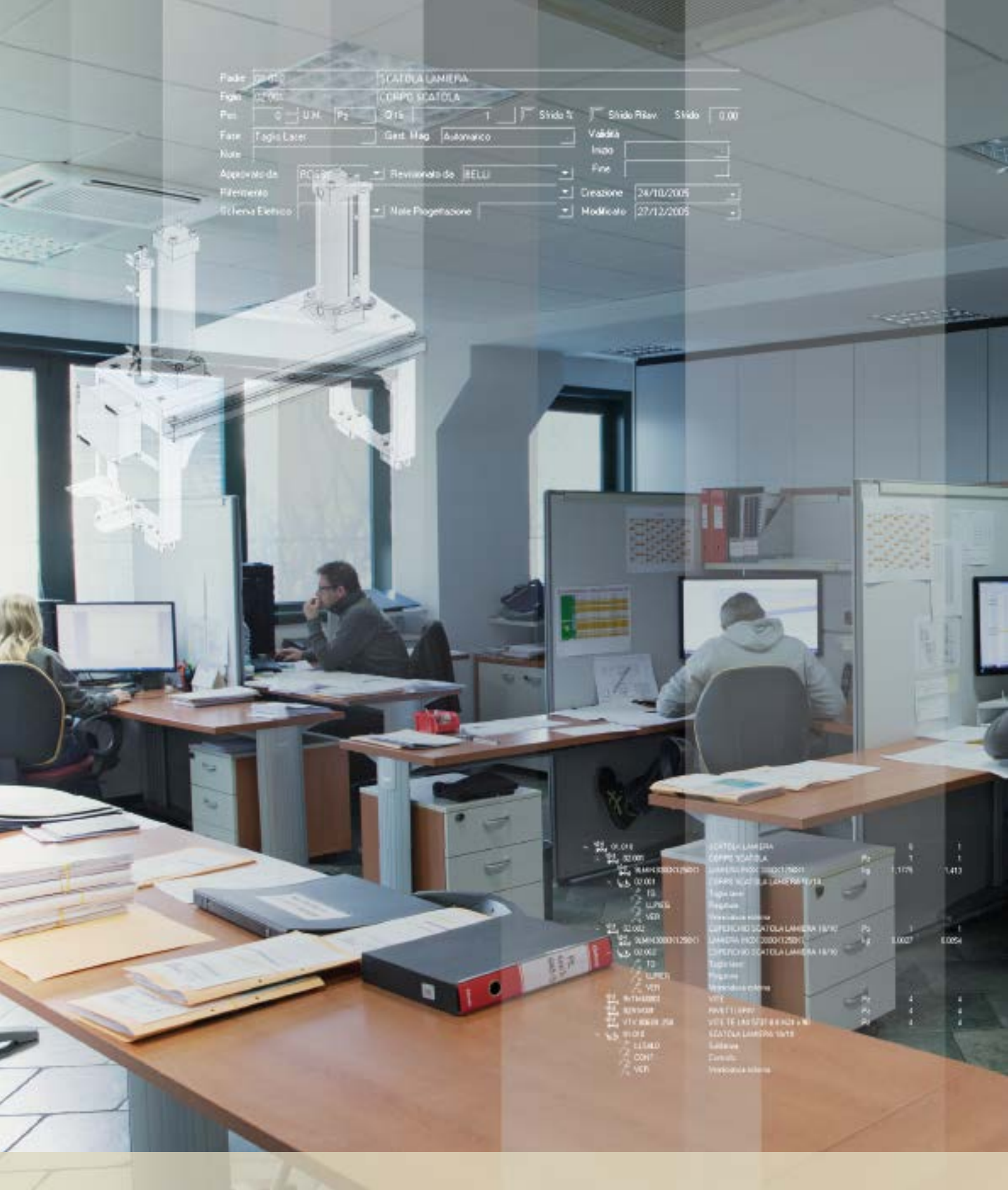
| Descrizione                         | Quantità | Unità | Prezzo | Totale |
|-------------------------------------|----------|-------|--------|--------|
| SCATOLA LAMIERA                     | 1        |       | 0.00   | 0.00   |
| CORPO SCATOLA                       | 1        |       | 0.00   | 0.00   |
| LAMIERA 1000x1200x1.5               | 1        | kg    | 1.176  | 1.176  |
| SCATOLA LAMIERA 1000x1200x1.5       | 1        |       | 0.00   | 0.00   |
| Taglio laser                        | 1        |       | 0.00   | 0.00   |
| Progettazione                       | 1        |       | 0.00   | 0.00   |
| Verifica e collaudi                 | 1        |       | 0.00   | 0.00   |
| CORPO SCATOLA LAMIERA 1000x1200x1.5 | 1        |       | 0.00   | 0.00   |
| LAMIERA 1000x1200x1.5               | 1        | kg    | 1.007  | 1.007  |
| CORPO SCATOLA LAMIERA 1000x1200x1.5 | 1        |       | 0.00   | 0.00   |
| Taglio laser                        | 1        |       | 0.00   | 0.00   |
| Progettazione                       | 1        |       | 0.00   | 0.00   |
| Verifica e collaudi                 | 1        |       | 0.00   | 0.00   |
| VITE                                | 4        |       | 0.00   | 0.00   |
| PARTE LAMIERA                       | 4        |       | 0.00   | 0.00   |
| VITE 10x10x100                      | 4        |       | 0.00   | 0.00   |
| SCATOLA LAMIERA 1000x1200x1.5       | 4        |       | 0.00   | 0.00   |
| Taglio laser                        | 1        |       | 0.00   | 0.00   |
| Progettazione                       | 1        |       | 0.00   | 0.00   |
| Verifica e collaudi                 | 1        |       | 0.00   | 0.00   |

00000 SCATOLA LAMIERA  
 00000 CORPO SCATOLA  
 00000 LAMIERA 1000x1200x1.5  
 00000 SCATOLA LAMIERA 1000x1200x1.5  
 00000 TAGLIO LASER  
 00000 PROGETTAZIONE  
 00000 VERIFICA E COLLAUDI  
 00000 VITE  
 00000 PARTE LAMIERA  
 00000 VITE 10x10x100  
 00000 SCATOLA LAMIERA 1000x1200x1.5  
 00000 TAGLIO LASER  
 00000 PROGETTAZIONE  
 00000 VERIFICA E COLLAUDI

Pado: 0000 SCATOLA LAMIERA  
 Fgto: 0000 CORPO SCATOLA  
 Pci: 0 U.M. P2: Q15 1 Slido % Slido Rilev. Slido 0.00  
 Fase: Taglio Laser Gest. Mag. Automatico Validità  
 Note: Inizio  
 Approvato da: P0000 Revisato da: BELLU Fine  
 Riferimento: Creazione 24/10/2005  
 Sistema Elettrico: Note Progettazione Modificato 27/12/2005

|        |                              |    |       |
|--------|------------------------------|----|-------|
| 00.018 | SCATOLA LAMIERA              | 0  | 1     |
| 00.001 | CORPO SCATOLA                | Pz | 1     |
| 00.001 | LAMIERA PZ01 1000X1250       | kg | 1.176 |
| 00.001 | 0000 SCATOLA LAMIERA 15/15   |    | 1.413 |
| 00.001 | Taglio laser                 |    |       |
| 00.001 | Progettazione                |    |       |
| 00.001 | Verifica e firma             |    |       |
| 00.001 | CORPO SCATOLA LAMIERA 15/15  | Pz | 1     |
| 00.001 | LAMIERA PZ01 1000X1250       | kg | 1.007 |
| 00.001 | 0000 SCATOLA LAMIERA 15/15   |    | 1.009 |
| 00.001 | Taglio laser                 |    |       |
| 00.001 | Progettazione                |    |       |
| 00.001 | Verifica e firma             |    |       |
| 00.001 | VITE                         | Pz | 4     |
| 00.001 | PARTE 11/000                 | Pz | 4     |
| 00.001 | VITE 15/15 15/15 15/15 15/15 | Pz | 4     |
| 00.001 | SCATOLA LAMIERA 15/15        | Pz | 4     |
| 00.001 | Taglio laser                 |    |       |
| 00.001 | Progettazione                |    |       |
| 00.001 | Verifica e firma             |    |       |

| Component             | Material | Weight (kg) | Volume (m³) |
|-----------------------|----------|-------------|-------------|
| SCATOLA LAMIERA       | Aluminum | 0.100       | 0.0001      |
| CORPO SCATOLA         | Aluminum | 1.176       | 0.0013      |
| LAMPADA               | Aluminum | 0.007       | 0.0008      |
| SCATOLA LAMIERA 18/10 | Aluminum | 0.007       | 0.0008      |
| LAMPADA 18/10         | Aluminum | 0.007       | 0.0008      |
| SCATOLA LAMIERA 18/10 | Aluminum | 0.007       | 0.0008      |
| LAMPADA 18/10         | Aluminum | 0.007       | 0.0008      |
| SCATOLA LAMIERA 18/10 | Aluminum | 0.007       | 0.0008      |
| LAMPADA 18/10         | Aluminum | 0.007       | 0.0008      |
| SCATOLA LAMIERA 18/10 | Aluminum | 0.007       | 0.0008      |
| LAMPADA 18/10         | Aluminum | 0.007       | 0.0008      |

[illegible]



# Preparation

FROM THE DRAWING TO THE SEMI-FINISHED PRODUCT

A detail for each pattern, a cut for each line, a fold for each profile. We give metal the right shape.

CAD – CAM

Fiber Laser Cutting (6Kw) provided with Compact Server

CN Bending & Punching Machine

Treatments in iron, stainless steel and aluminum





# Welding & Processing

IDEAS TAKE SHAPE

Thanks to a precise metal processing, the project becomes clear and everything turns from a set of untied elements into a single body.

Welding of iron, stainless steel and aluminum

Qualified processes and welders

Non-Destructive Testing

Certification EN 1090-1:2009+A1:2011

Mechanical machining and thermal treatments





# Painting

A PERFECT FINISHING

We add color to the mechanics, in order to protect it and to give it the right finishing, so that it can convey the visual experience of a luxury car.

Liquid painting

Powder painting

Two dedicated rooms

Surface treatments

Galvanic treatments







# Assembly

EVERYTHING IN ITS RIGHT PLACE

The production cycle is over, all the elements have found their own place. We have taken care of it as a whole, since we believe that every working must be carried out to perfection.

Assembly of trade, mechanical parts and sheet

Electric plant

Pneumatic plant

Electric, mechanical and functional testing

Functional tests







# Transports

YOUR MACHINE, EVERYWHERE

Always ready to delivery! We reach you all over the world, by any means, according to your needs.

Packagings

Exceptional transports

Documentation management







Medical sector



Printing machines  
for packaging  
materials industry



Machine  
tools industry



Textile industry



Waste treatment  
industry



Turbogas & Nuclear  
industry



Military sector



All of our certifications are yearly reconfirmed through specific audits.



ITALPROGETTI Srl

Via dei Cordari, 11 - 13039 Trino (VC) - Italy

Tel. +39 (0) 161 80 99 11

Fax +39 (0) 161 80 99 00

[info@italprogetti-trino.it](mailto:info@italprogetti-trino.it)

[www.italprogetti-trino.it](http://www.italprogetti-trino.it)