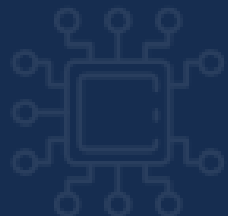


COMPANY PROFILE



SERVICES



CONSULTANCY



DESIGN



DEVELOPMENT

SOLUTIONS FOR TEST,
MEASUREMENT AND
CONTROL.

OUR TEAM

- 1 CLA (CERTIFIED LABVIEW ARCHITECT)
- 2 CPI (CERTIFIED PROFESSIONAL INSTRUCTOR)
- 2 CLD (CERTIFIED LABVIEW DEVELOPER)
- 1 FULL STACK DEVELOPER (PYTHON /JS/ HTML/ CSS)

OUR HISTORY

2013

BEGINNING

Nicola Bavarone LabVIEW Freelancer

2015

NI PARTNER

LabVIEW Consultant

2019

Founded the new BYTELABS srls

1 CLA 1 CPI

2020

3 LabVIEW developer (CLA, CPI, CLD)

1 Full Stack Developer

1 Administration

2021

3 LabVIEW developer (CLA, CPI, CLD)

1 Full Stack Developer

1 Administration

1 Marketing



OUR TEAM HELPS TO CREATE EXCEPTIONAL SOLUTIONS FOR
TEST, MEASUREMENT AND CONTROL, WITH AND FOR OUR
CUSTOMERS.



“Decisions without measurements is guessing!”
we help you to AVOID it.

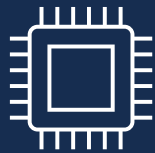
MARKETS



AUTOMOTIVE



AVIOSPACE



ELECTRONICS



ELETTRO MED



HVAC



INDUSTRY

PARTNERS



Building an Intelligent Planet

Microsoft Partner



OUR VALUES



PEOPLE-FIRST

We are bytelabs and we think that people are the most important component.



RELATIONSHIP

Building relationships of trust



ETHICS AND RESPONSIBILITY

Responsible and respectful attitude towards things, thoughts and people.

CUSTOMERS

KEMET
a YAGEO company



TECHNOGYM

Rpm
MOTORI ELETTRICI

Phoenix
R+D

CMC VENTILAZIONE

 **HW VENTILATION**

TRASFOR

AERMEC

alTran

cefla

 **infoolution**[®]

FACO
HEAT EXCHANGERS AND DRY COOLERS


ELETTROTEST

asa

CAPACITOR TEST SYSTEM

CUSTOMER: KEMET



Film Capacitor characterization test.



Automatic test with integration of different tools. Lab application to execute measures and Cloud application for test request.



The test aims to evaluate the regression of components after climatic cycles.



Main Technologies: GPIB, SQL Server, API-Rest.

The screenshot displays the 'LAB TEST REPORT' interface for an Agilent E4980A LCR meter. The interface is organized into several sections:

- Top Bar:** Displays 'LAB TEST REPORT' and 'LCR - Agilent E4980A'.
- Product Information:** Includes fields for 'Codice Prodotto', 'Serie', 'Capacità', 'VDC', 'VAC', and 'Tolleranza'.
- Test Parameters:** Includes 'Num. pezzi', 'Data', 'Riferimenti', 'Condizioni', 'Data inizio Prova', 'Durata', 'Step Nro', 'V. Source', 'Time ACQ', 'Measure Time', 'Measure Type', 'Current Limit', 'Averaging Rate', 'Operator', 'Data', 'Amb. °C', 'R.H. %', and 'Commento'.
- Step Configuration:** Includes 'Selezione Step Nro 1', 'Selezione Step Nro 2', 'Delta Capacità', 'Delta Tangente 1', 'Delta Tangente 2', 'Selezione grandezza', 'Modalità', and 'Step Iniziale/Finale'.
- Table:** A table with columns 'Step', 'Lim Inf', and 'Lim Sup' for defining test steps.
- Buttons:** Includes 'Report', 'Report TC', 'Report GA', 'Start', 'Settings', and 'Exit'.

END-OF-LINE TESTING OF GAS REDUCERS

CUSTOMER: TARTARINI SRL



Gas reducer test



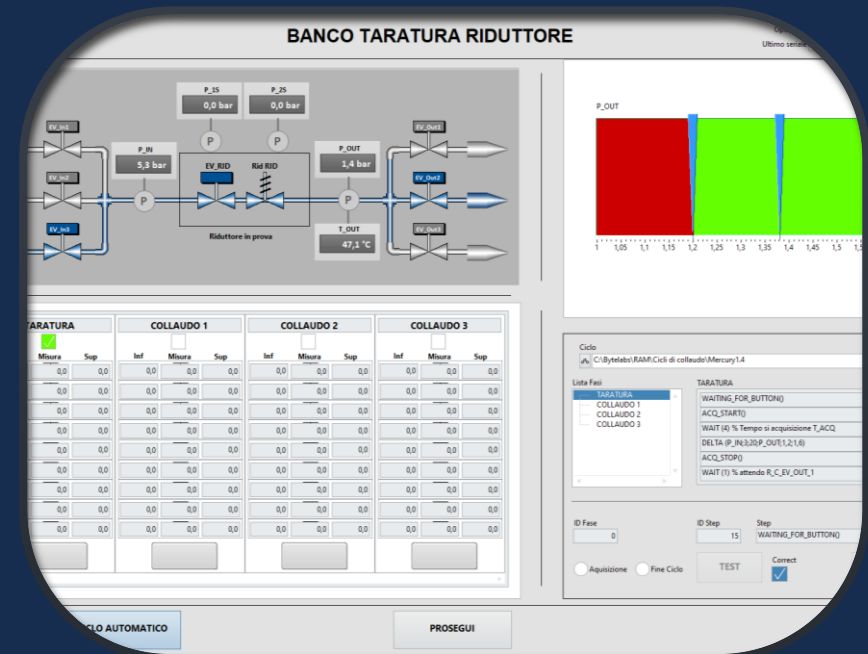
Automatic test with integration of different sensors, actuator and so on.



The aim is to test the main parameters of gas reducer.



Main Technologies: NI-DAQ, SQL Server, Report Generation.



FAN CHARACTERIZATIONS AMCA210

CUSTOMER: HW VENTILATION



Tunnel for testing Fan system



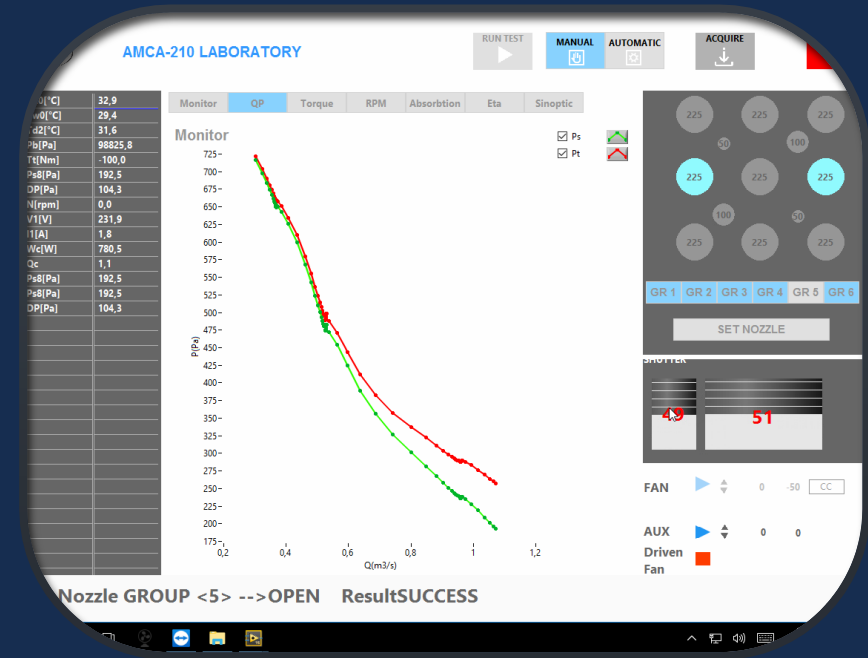
Automatic test with integration of different sensors and actuators.



The test aims to evaluate the characteristic of Fan.



Main Technologies: cDAQ, SQL Server, Report Generation.



FLOW REGULATOR TEST FOR MEDICAL DEVICES

CUSTOMER: PHOENIX-RD



End of Line test on flow regulator, for medical devices.



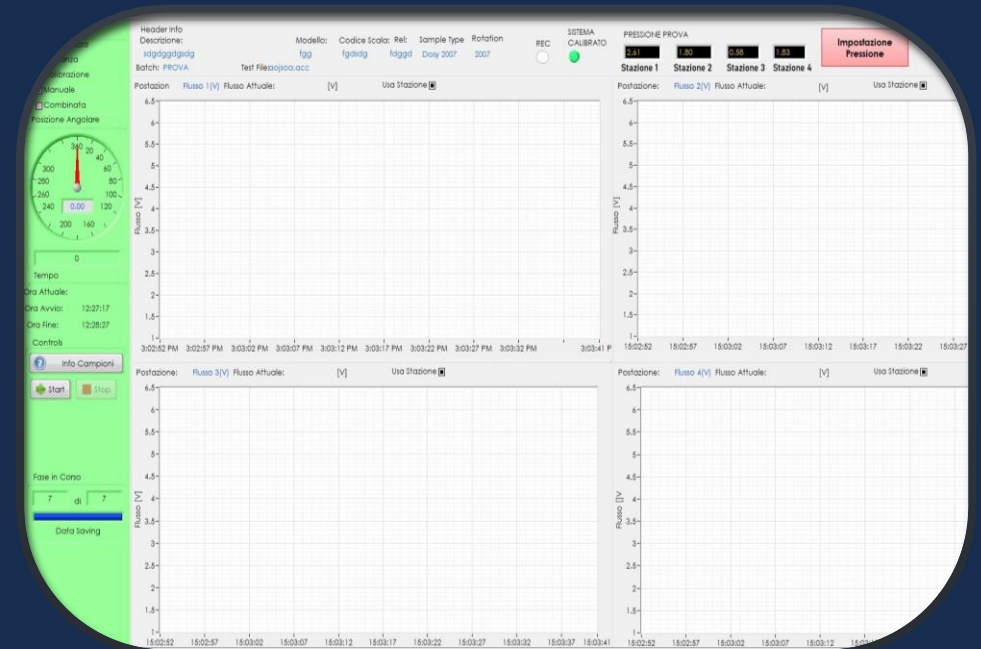
The test is in air to accelerate the test ISO 8536-13.
40% of time reduction in EOL to test 100% samples.



The aim of test is to check flow regulators at different set points and automatically determine if parts are Pass or Fail. Standard compliance to: **"Infusion equipment for medical use -Part 13: Graduated flow regulators for single use with fluid contact, ISO 8536-13"**



Main Technologies: USB-DAQ, PDF report generation, ModBUS, LabVIEW.



POSITION TRANSDUCER EOL TEST

CUSTOMER: MARPOSS



System of Test and calibration for LVDT, AirGap and HBT sensors. Based on the old Analog Instrument, this new one is based on a high performance Hardware, with FPGA, RTOS Linux. PC Version and stand alone with display 7 or 10inch.



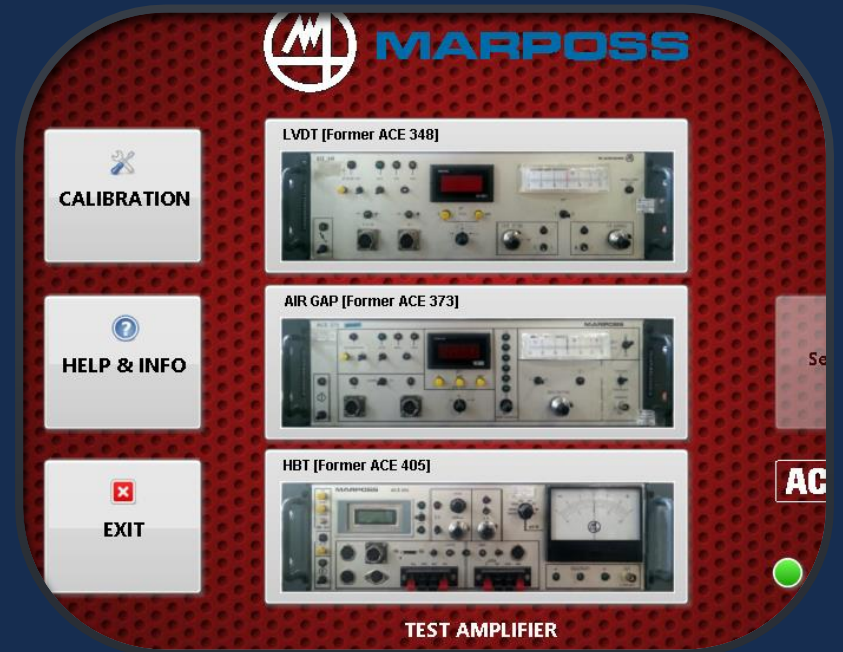
The test is in air to accelerate the test ISO 8536-13.
40% of time reduction in EOL to test 100% samples.



Aim of test is Calibration and Controls of "Transducer" produced by Marposs.
Standard compliance to: ACE procedures.



Main Technologies: TCP-IP, SQL, LabVIEW, Report Generation.

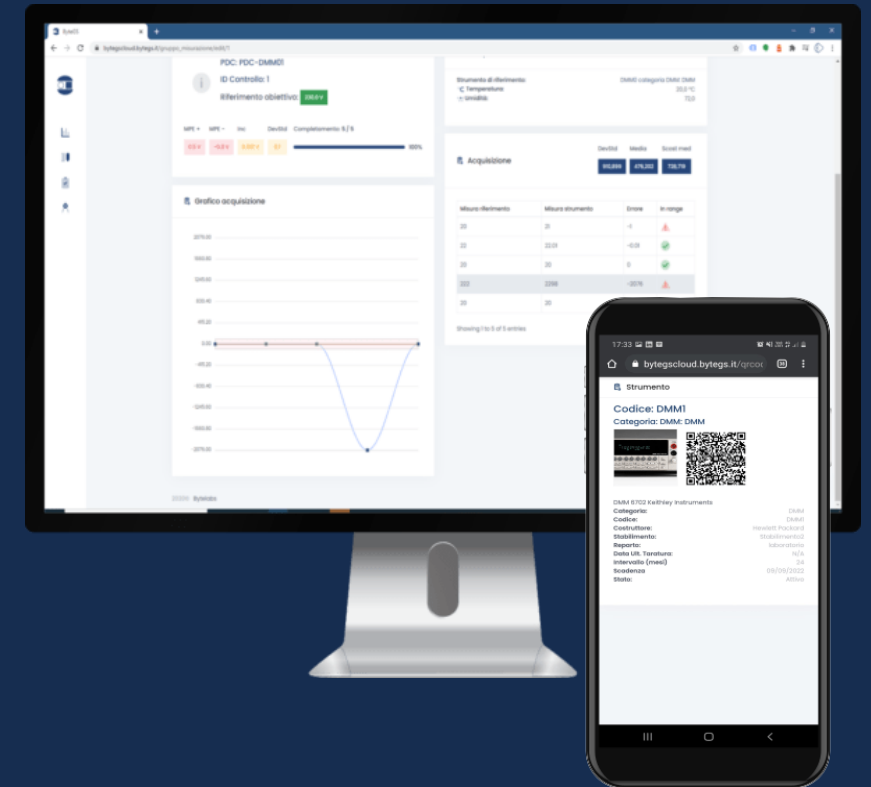


OUR PRODUCT



SAAS SOFTWARE FOR INSTRUMENTS AND CALIBRATION

IS A SOLUTION TO HANDLE INSTRUMENTS, CALIBRATIONS BOOKING,
FIND EVERY KIND OF DATA WHEREVER YOU ARE.



THANK YOU

Contact us for your next project



0532 458971



info@bytelabs.it



<https://bytelabs.it>