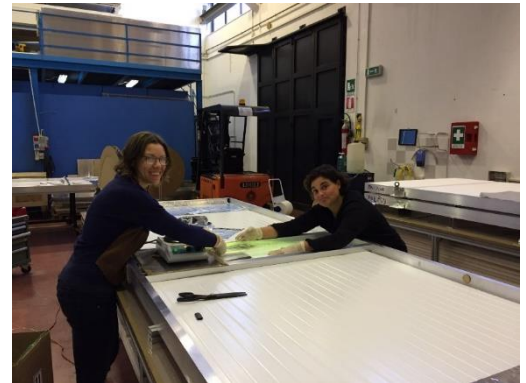




PIERRE
AUGER
OBSERVATORY



SSD stato produzione, installazione e test AUGER-ITALIA 6/5/2021





Current status of the production

Last update 5/5/2021

Institution	Produced	Validated	Shipped
Aachen	135	135	135
Grenoble	90	90	90
KIT	600+45	600+45	645
Krakow	228	228	135(+93on_their_way)
Lecce	240	240	240
Nikhef	180	180	180
Total	1518	1518	1425(+93)



Da Lecce

Ultimo container (Lecce 006-container 20x) che comprendeva anche gli «small PMT»(Napoli) è partito da Lecce il 26 gennaio 2021 – **A Malargue:Marzo 2021**

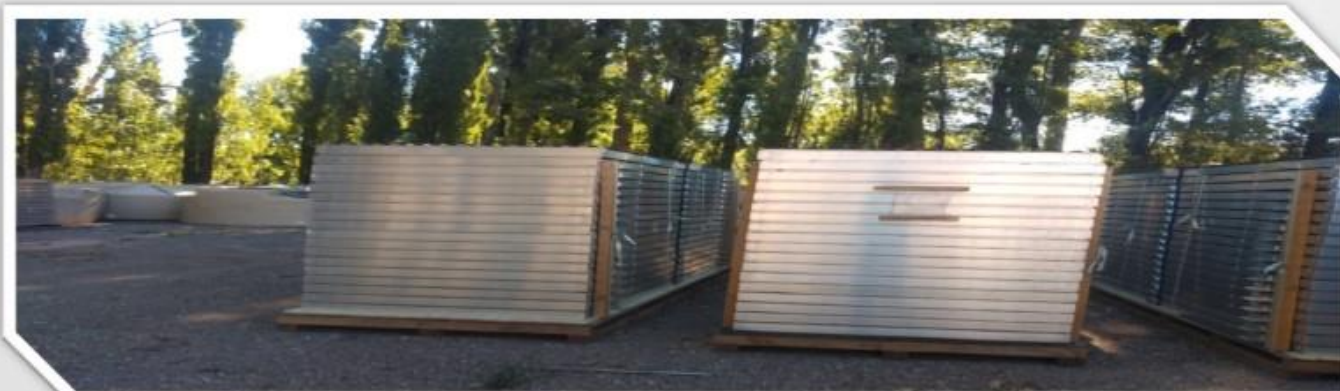




Qual è la situazione a Malargüe?

Malargüe Status – 03/05/2021

- Installed in the field: **1172**
- Installed in the field with PMT :**154** (SSD-80 + UUB Pre-production)
- Ready to Install (AB): **65**
- To be assembled (AB Yard): **187**
- Total modules in Malargüe: **1426** (Installed + Stored + Assembled)



Fabián Gobbi

To be assembled: non hanno scatola di protezione elettronica e tetto corrugato

Installed in the field with/without PMT: ovvia interpretazione

SSD MAP

Fabián Gobbi

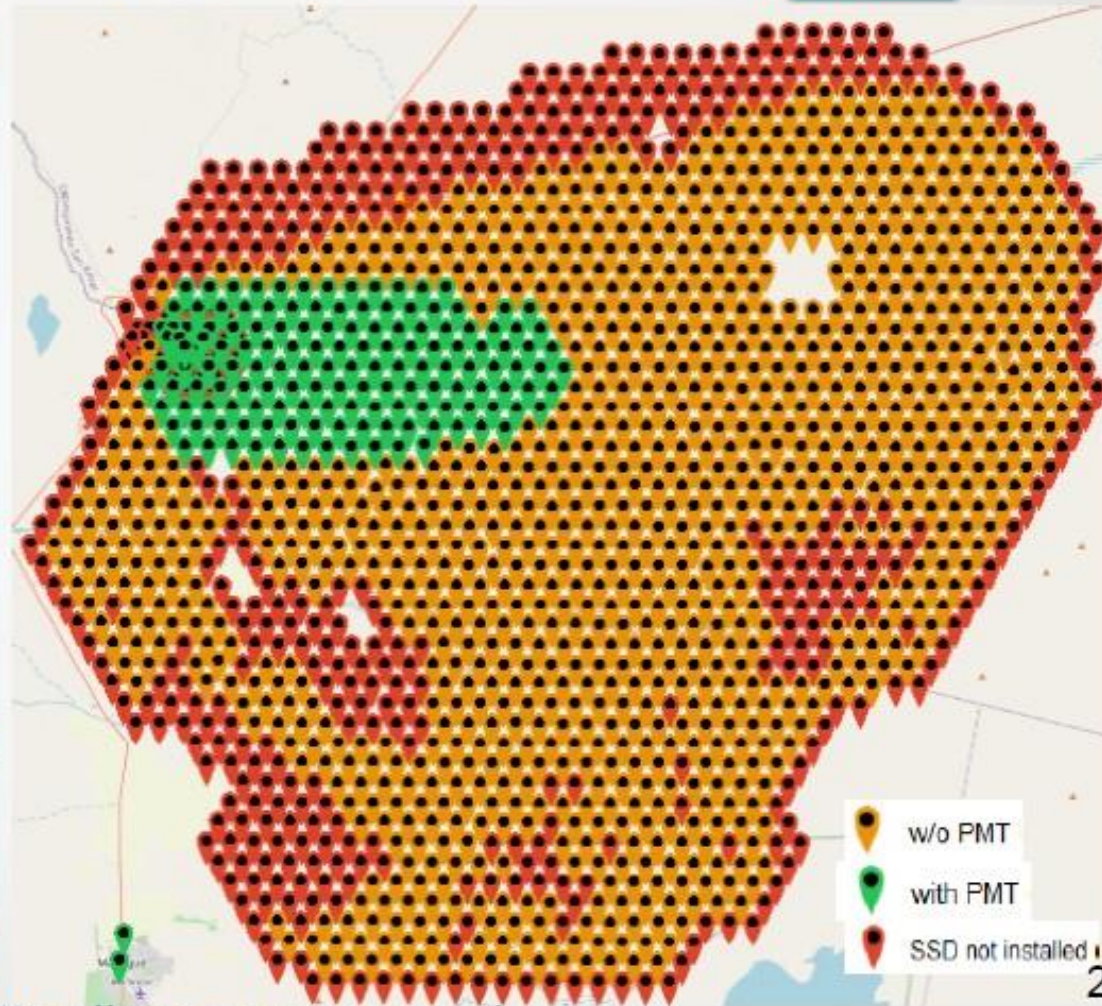
Total SSD to install: **1410**
Installed: **1172** (83%)
To install: **238** (17%)



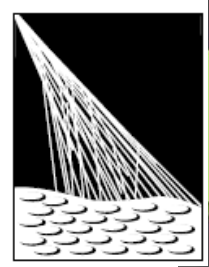
Total SSD with PMT : **1410**
Installed: **154** (11%)
To install: **1256** (89%)



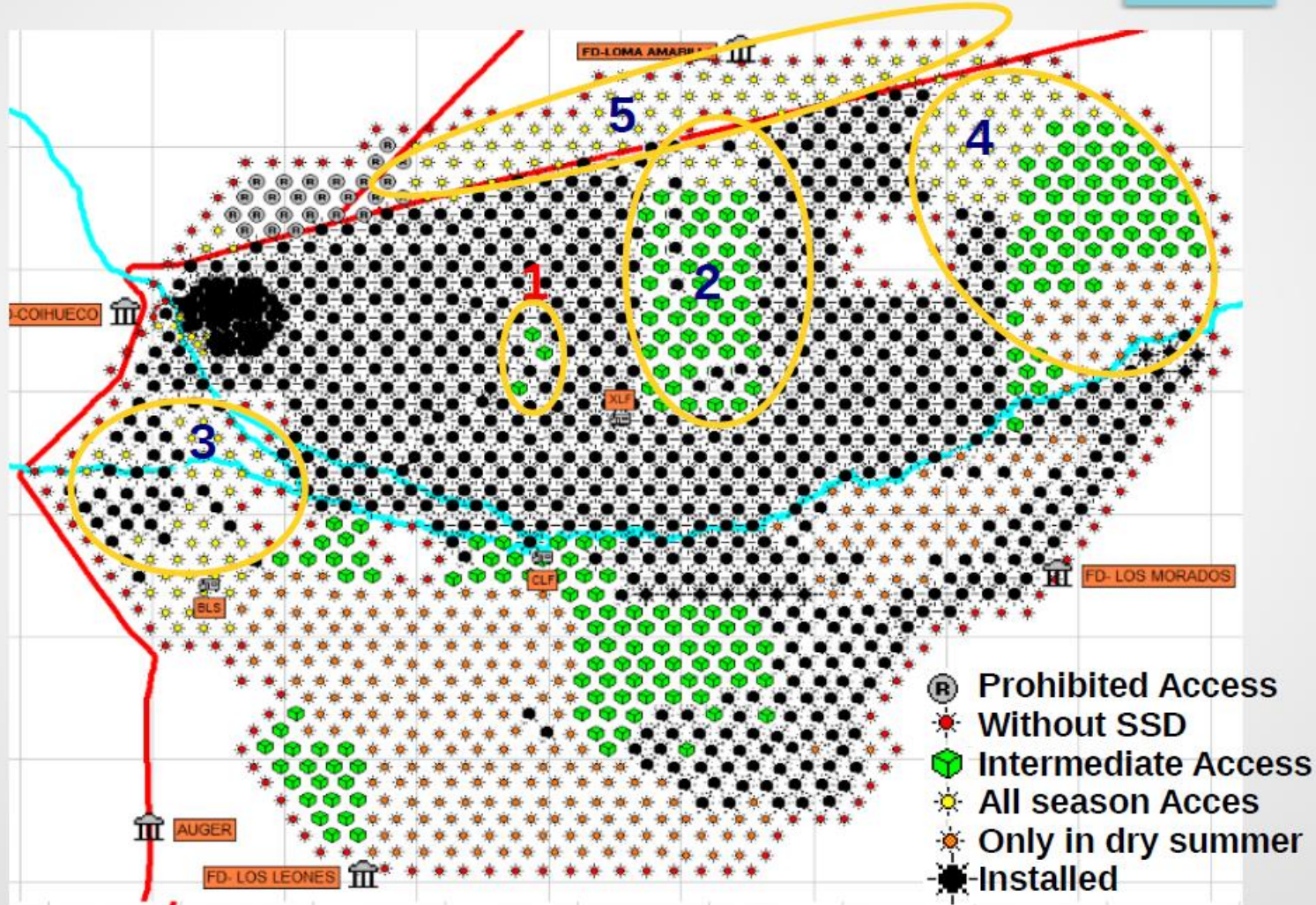
Total SSD to assemble: **1518**
Assembled: **1239** (82 %)
To assemble: **279** (18%)



<https://maps.auger.org.ar/>

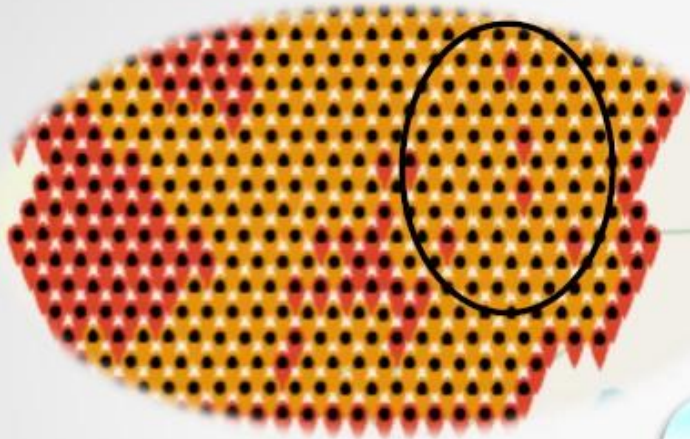


Next Steps



From
April 2020
slides

SSD MAP

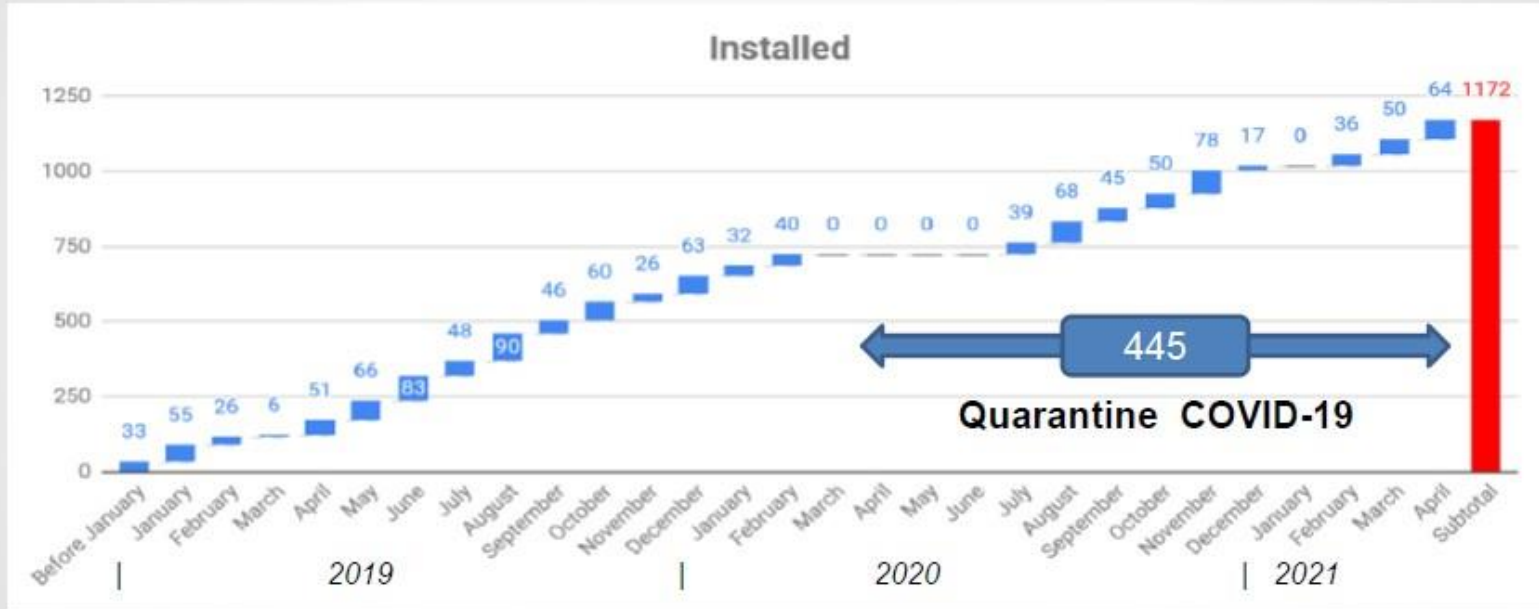


Some examples of erosion problems

L'estate non è stata particolarmente secca!



Installed



Actual days of work to finish deployment

Actual days of work to finish deployment

4 People = 60 days

We are currently installing four days a week because we use one day for crane, truck, and tool maintenance. In this way we have been able to reduce the number of days lost due to crane failures.

4 People = 15 weeks (4 days per week)

Fabián Gobbi

Stiamo posizionando in gran parte solo SSD



Problem with corrugated roofs

Problem: Corrugated roofs are damaged when SSDs are transported to the field

Problem presented at the Malargüe meeting in November

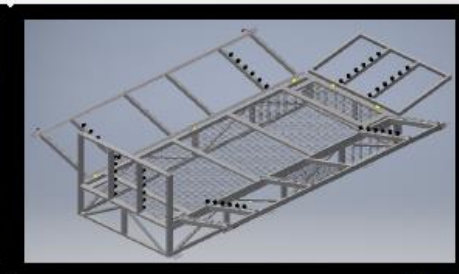
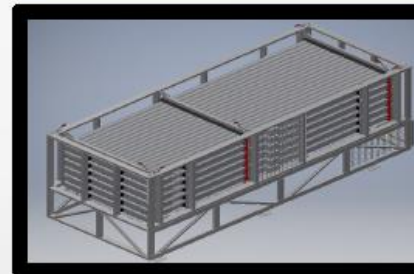


Momentary solution:

Cut the corners so that they do not hit the structure.



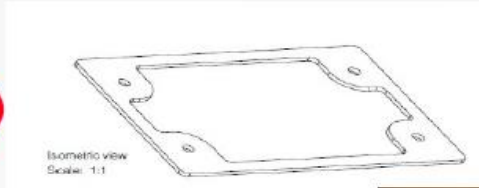
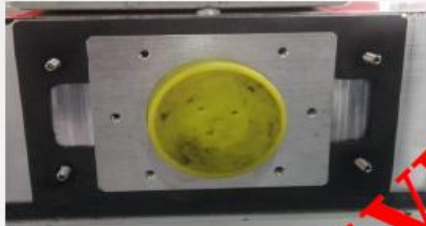
Solution: Build a new structure





ALUbox gasket

Reduce assembly time using ALUbox gasket

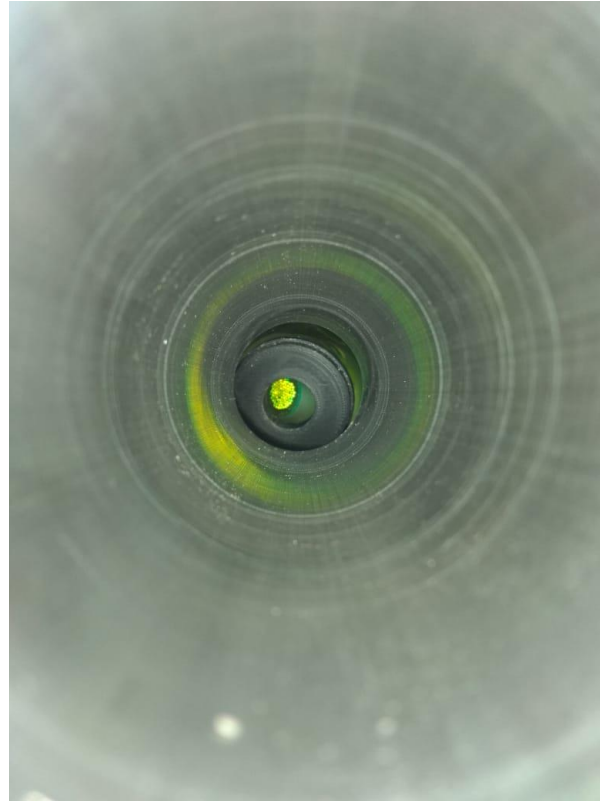
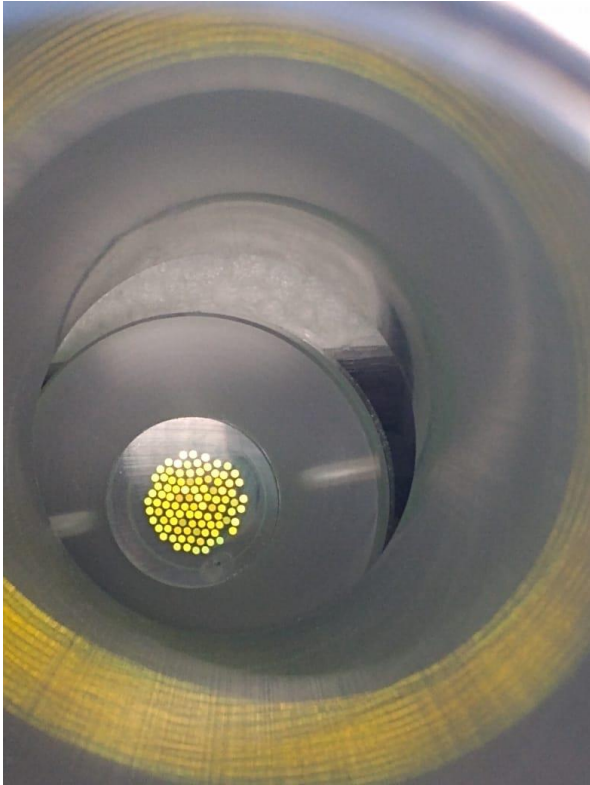


SOLVED



Henryk has sent 2000 gasket to Malargüe.
The expected delivery date at the Observatory was 26 March.

Problemi in alcuni SSD (cookie)



Questi SSD non sono nel campo.- Sarà necessario «riaprirli» per ripararli, ma per questa operazione è necessaria la presenza di qualcuno che abbia costruito i rivelatori (oltre che di materiale specifico). (Parte del materiale – colle, cemento ottico, silicone ha una scadenza inferiore all'anno).