

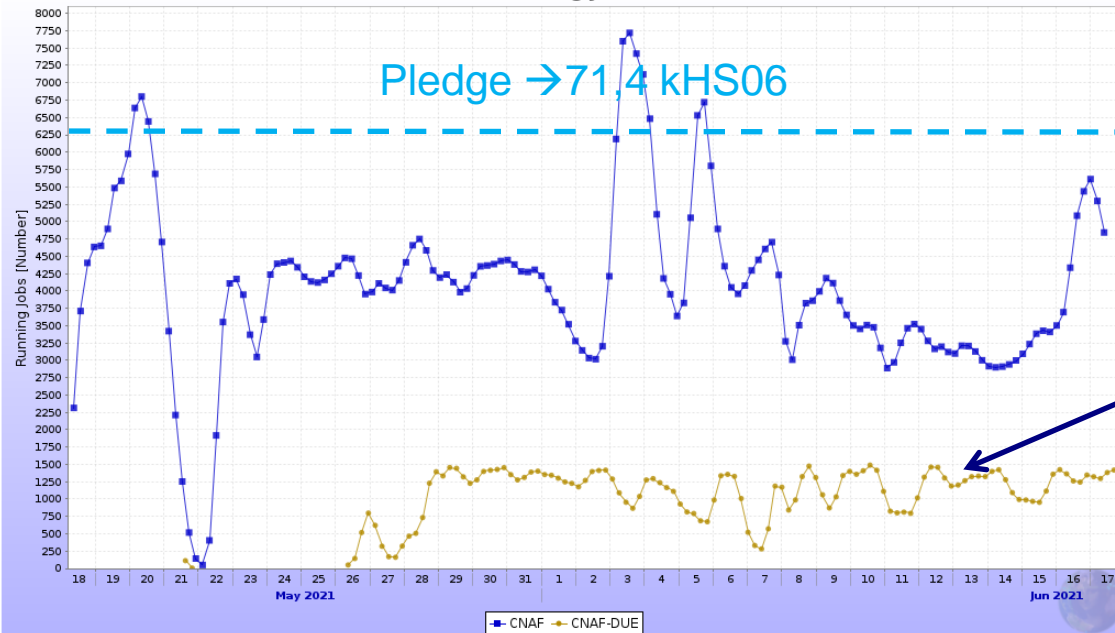
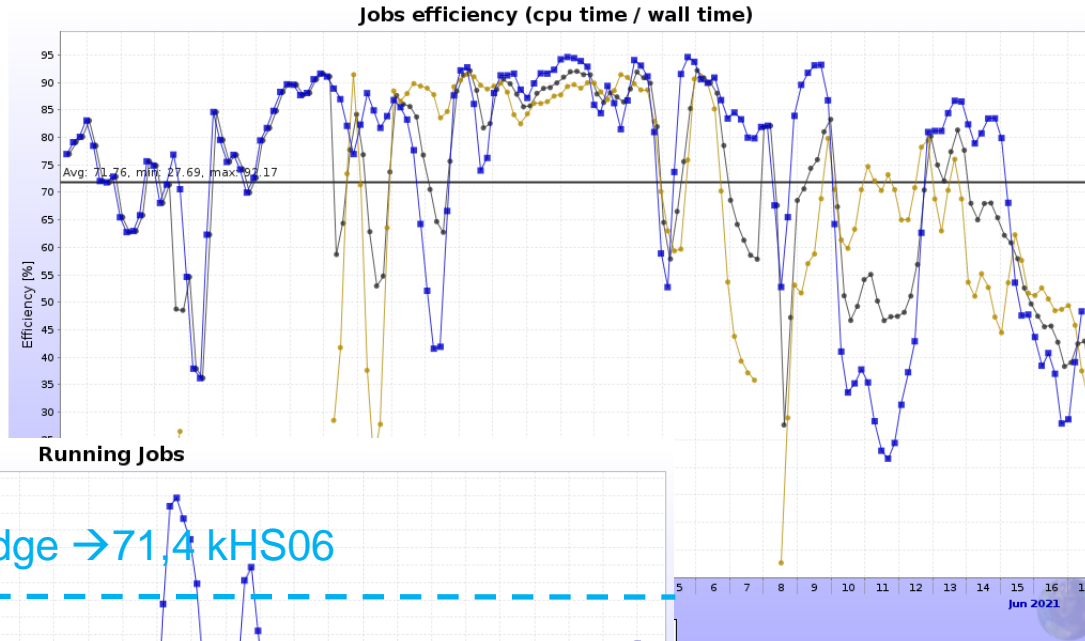


ALICE @ CNAF

Francesco Noferini – INFN sez. Bologna

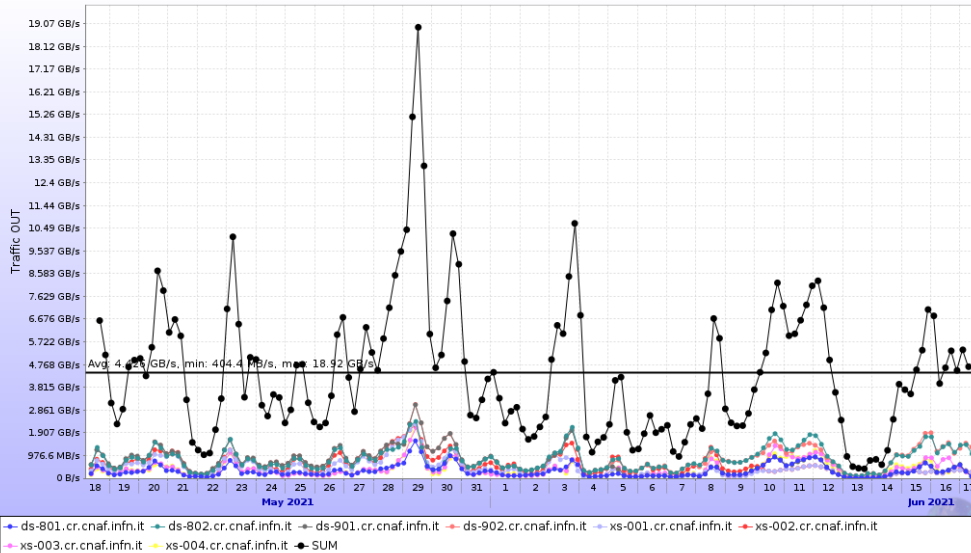
Domenico Elia – INFN sez. Bari

Attività sulla farm



Multicore queue
(8-cores)

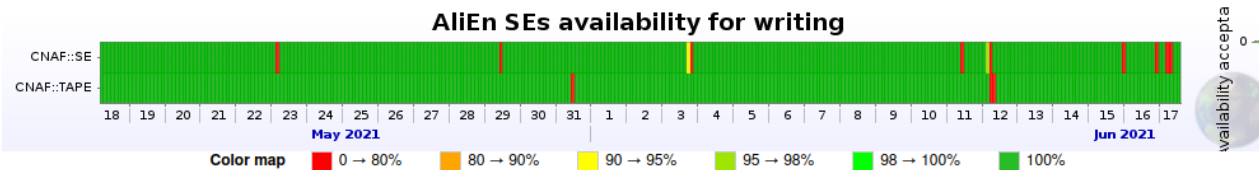
Network traffic on ALICE::CNAF::SE



Lavoro in corso di ottimizzazione script servizio xrootd gestione problemi filesystem:
 → Nuovo rpm in produzione

DISCO (SE): 7.0 P used at 83%
 BUFFER (TAPE): 574 T
Pledge 2021 → 8.23 PB

AliEn SEs availability for writing



| Statistics | | | | | | |
|------------|-------------------|-------------------|-------------------------------------|--------|---------------|--------------|
| Link name | Data | | Individual results of writing tests | | | Overall |
| | Starts | Ends | Successful | Failed | Success ratio | Availability |
| CNAF::SE | 18 May 2021 03:26 | 17 Jun 2021 13:25 | 712 | 9 | 98.75% | 98.81% |
| CNAF::TAPE | 18 May 2021 03:11 | 17 Jun 2021 13:11 | 716 | 5 | 99.31% | 99.35% |

| | Overall |
|---------------|--------------|
| Success ratio | Availability |
| 99.72% | 99.74% |
| 64.36% | 65.06% |

Reading tests
 Incostistenza sotto
 indagine

Report

- Abbiamo trovato una cassetta guasta (T15042, 4586 files raw). Siamo d'accordo di tentare il ri-trasferimento dei file prima di tentare recupero della cassetta (Oracle) → ci vorrà un po' di tempo. Contestualmente ri-trasferiremo anche altri file corrotti trovati da check periodici (in attesa di lista da A. Cavalli).

| ALICE | | 2020 | | | 2021 | | 2022 | | | Share INFN |
|-------|---------------|------------------|--------------|--------------|------------------|--------------|--------------|----------------------------|------------------|------------|
| | | C-RSG recomm. | Pledged | Used | C-RSG recomm. | Pledged | Request | 2022 req/2021 C- RSG | C-RSG recomm. | |
| CPU | Tier-0 | 350 | 350 | 595 | 471 | 471 | 471 | 100% | 471 | |
| | Tier-1 | 365 | 354 | 405 | 498 | 412 | 498 | 100% | 498 | 17% → 85 |
| | Tier-2 | 376 | 435 | 405 | 515 | 481 | 515 | 100% | 515 | 17% → 88 |
| | HLT | n/a | n/a | n/a | n/a | n/a | n/a | n/a | n/a | |
| | Total | 1091 | 1139 | 1405 | 1484 | 1364 | 1484 | 100% | 1484 | |
| | <i>Others</i> | | | | | | | | | |
| Disk | Tier-0 | 31.2 | 31.2 | 30.1 | 45.5 | 45.5 | 50 | 110% | 50.0 | |
| | Tier-1 | 44 | 41.8 | 35.9 | 53.3 | 45.4 | 55 | 103% | 55.0 | 17% → 9,4 |
| | Tier-2 | 39 | 43.2 | 36.1 | 44.8 | 50.4 | 49 | 109% | 49.0 | 17% → 8,3 |
| | Total | 114.2 | 116.2 | 102.1 | 143.6 | 141.3 | 154 | 107% | 154.0 | |
| Tape | Tier-0 | 44.2 | 44.2 | 41.4 | 86.0 | 86.0 | 95.0 | 110% | 95.0 | |
| | Tier-1 | 37.7 | 44.4 | 35.8 | 57.0 | 59.8 | 63.0 | 111% | 63.0 | 29% → 18,3 |
| | Total | 81.9 | 88.6 | 77.2 | 143.0 | 145.8 | 158.0 | 110% | 158.0 | |

Table 6 ALICE resource requests for 2022 and C-RSG recommendations. For reference, the 2020 utilization and 2021 pledged resources are also given.

| | Pledge 2021 | Finanziate 2021 | Richieste 2022 | Delta |
|------------|-------------|-----------------|----------------|-------------------|
| Tier-1 | | | | |
| CPU (HS06) | 71400 | 71400 | 84660 | 13260 x 10 E/HS06 |
| Disco (TB) | 8228 | 8228 | 9350 | 1122 x 140 E/TB |
| Tape (TB) | 11948 | 11948 | 18270 | 6322 x 18 E/TB |

Richieste incremento Tier-1 → CPU (132,5 kE) + Disco (157 kE) + Tape (114) = 403,5 kE

Missioni e overhead non riportate

| Tier-2 | Pledge 2021 | Finanziate 2021 | Richieste 2022 | Delta |
|------------|-------------|-----------------|----------------|------------------|
| CPU (HS06) | 73440 | 80446 | 87550 | 7104 x 10 E/HS06 |
| Disco (TB) | 7293 | 8168 | 8330 | 162 x 140 E/TB |

Richieste incremento Tier-2 → CPU (71 kE) + Disco (22,5 kE) = **93,5 kE**

| Dismissioni 2020 | CPU 2021 | CPU 1sem 2022 | CPU 2sem 2022 | Disco 2021 | Disco 1sem 2022 | Disco 2sem 2022 |
|------------------|----------|---------------|---------------|------------|-----------------|-----------------|
| BARI | 10512 HS | 3065 HS | 2466 HS | 1224 TB | 0 | 0 |
| CATANIA | 15125 HS | 0 | 0 | 960 TB | 0 | 0 |
| PD/LNL | 0 | 1504 HS | 1504 HS | 180 TB | 0 | 0 |
| TORINO | 0 | 4200 | 1534 | 0 | 88 | 250 |

} **PON**
} **IBISCO**

Dismissioni Tier-2 CPU (HS06) → **87,5 + 311,5 kE**
 Dismissioni Tier-2 Disco (TB) → **72,5 + 306,0 kE** ➔ **160,0 kE + 617,5 kE**



Grazie!