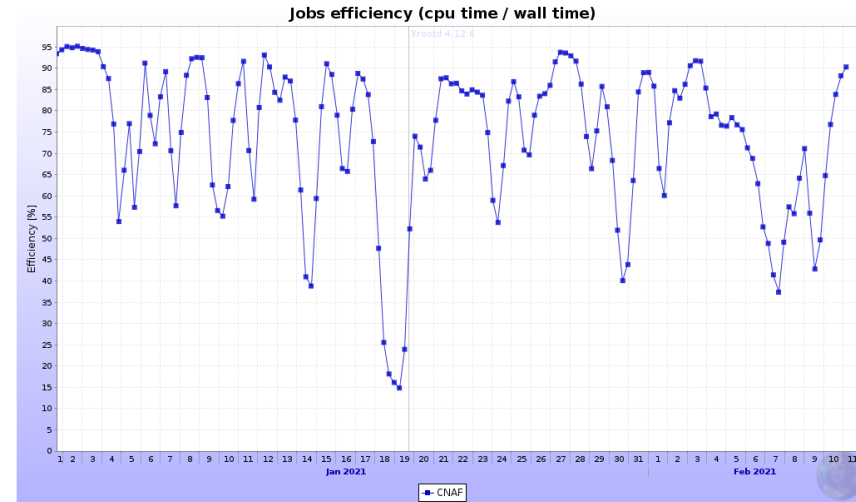
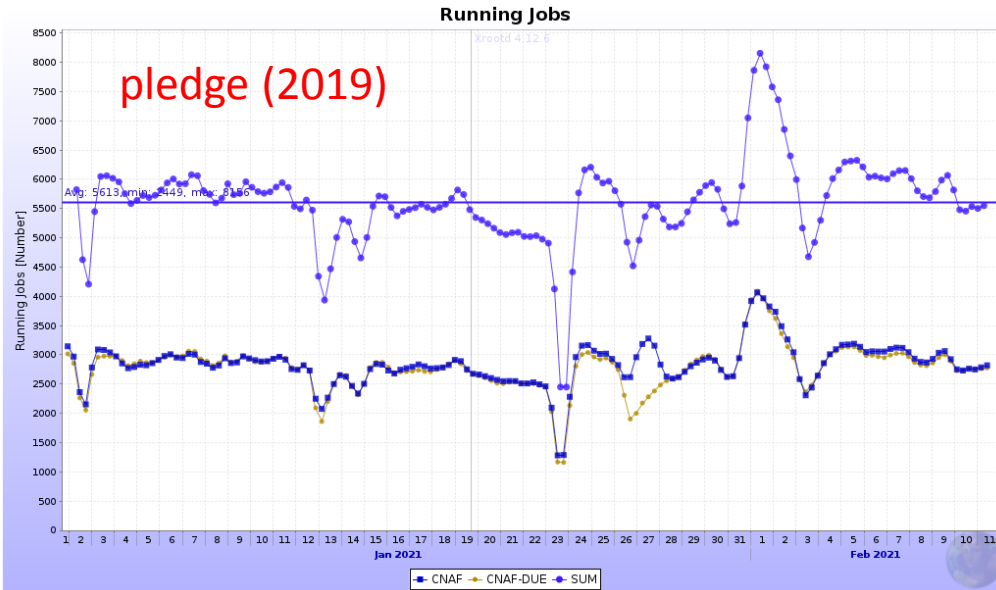


ALICE

F. Noferini, D. Elia

Farming



Jobs efficiency (cpu time / wall time)

	Series	Last value	Min	Avg	Max
1.	CNAF	90.32	0	74.05	97.56
	Total	90.32		74.05	

Siamo al limite con i server xrootd (load)

Storage

What is this about?

Disk storage elements

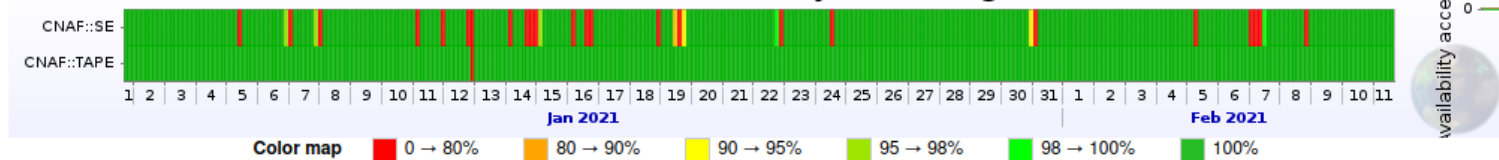
CNAF																							
AliEn SE			Catalogue statistics						Storage-provided information						Functional tests				Last day add tests		Demotion	IPv6	
SE Name	AliEn name	Tier	Size	Used	Free	Usage	No. of files	Type	Size	Used	Free	Usage	Version	EOS Version	add	get	rm	3rd	Last OK add	Successful	Failed	factor	add
1. CNAF - SE	ALICE::CNAF::SE	1	6.174 PB	5.281 PB	914.3 TB	85.54%	174,289,146	FILE	6.174 PB	5.428 PB	763.9 TB	87.92%	Xrootd v4.8.4						11.02.2021 15:53	24	0	0.744%	
Total			6.174 PB	5.281 PB	914.3 TB		174,289,146		6.174 PB	5.428 PB	763.9 TB				1	1	1	1					1

What is this about?

Custodial storage elements

CNAF																							
AliEn SE			Catalogue statistics						Storage-provided information						Functional tests				Last day add tests		Demotion	IPv6	
SE Name	AliEn name	Tier	Size	Used	Free	Usage	No. of files	Type	Size	Used	Free	Usage	Version	EOS Version	add	get	rm	3rd	Last OK add	Successful	Failed	factor	add
1. CNAF - TAPE	ALICE::CNAF::TAPE	1	1.283 PB	10.29 PB	-	802.3%	6,646,782	FILE	521.6 TB	436.5 TB	85.07 TB	83.69%	Xrootd v4.8.4						11.02.2021 15:38	24	0	0	
Total			1.283 PB	10.29 PB	0		6,646,782		521.6 TB	436.5 TB	85.07 TB				1	1	1	1					1

AliEn SEs availability for writing



Statistics						
Link name	Data		Individual results of writing tests			Overall
	Starts	Ends	Successful	Failed	Success ratio	Availability
⚠ CNAF::SE	01 Jan 2021 16:00	11 Feb 2021 15:53	955	29	97.05%	97.08%
⚠ CNAF::TAPE	01 Jan 2021 15:46	11 Feb 2021 15:38	990	1	99.90%	99.90%

Attualmente abbiamo in produzione 8 server. Non è un problema di banda o di risorse sulle macchine ma di numero di server (numero di richieste/socket) → discussione con lo storage in corso

Gare Tier-2 2021

- Ci stiamo organizzando per fare gare ai Tier-2 di PD/Legnaro (con CMS) e Torino
 - CPU: attraverso convenzioni
 - Storage: gare locali