

Calorimeter Installation: Overview

S. Miscetti, LNF

14 – October – 2020

Mu2e Italy Assembly/Installation meeting



Just two words on today meeting

- **Need to present an updated plan to the integration team for installation**
- This is divided in two parts assuming calorimeter is in our hands already:
 - 1. procurement of service cables, feedthroughs, fibers, flanges and so on**

There is a lot of confusion on this and some grey area.

We should find an agreement on procurement, on sharing of costs and on when needed.

A first discussion has been held starting from the Technical board but contributions are not settled down completely. We are in a good status on this item but we will need to focus on this in the next period and then iterate.

2. Schedule the big steps. This is the reason of today discussion:

- A. present a more refined installation plan (now the sequence, then resources) with the goal of adjusting our installation schedule in P6 and then get aligned with the other sub-systems in Muon-beamline;
- B. present a more refined plan for cabling services, piping, fibers and flanges
Discuss how to participate to the routing-test of services at the IFB mockup;
- C. Discuss how we want to keep our temperature stable not to interfere with the tracker.

These presentations will be showed then at the GM
(either at Calo or Installation workshops)

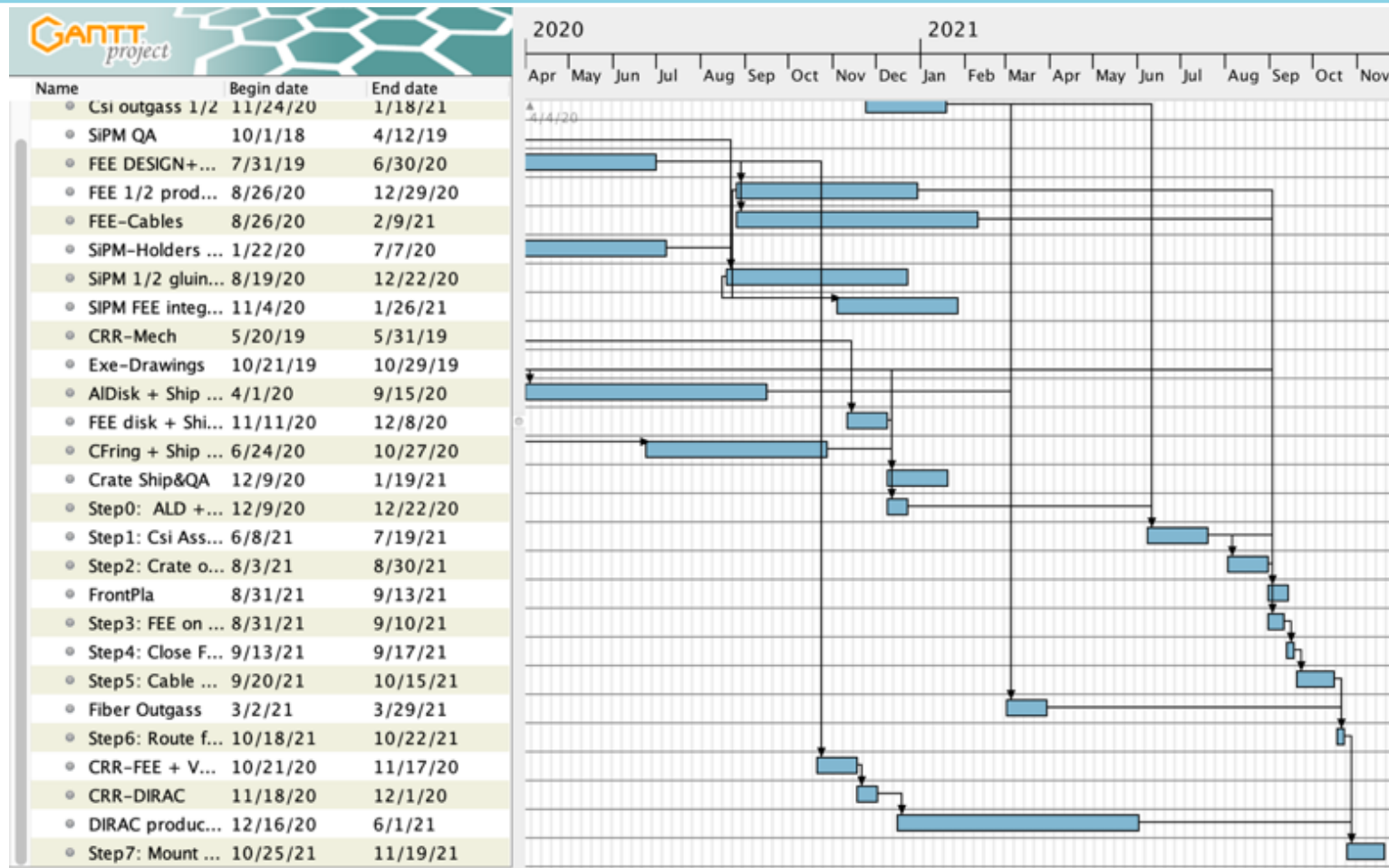
Long term status

- After CM there will be a P6 revision for the schedule to update as much as possible the experiment schedule and integrate all COVID-related delays
- The plan is to get ready for a DOE IPR review for beginning of 2021 (probably on January)
- It is not clear yet what it will happen then but a re-baseline is possible

Ron proposal is to shift CD-4 deadline from Dec 2022 of 2 years to absorb delays from magnet and from the detector to get DOE approval. Keep the schedule as tight as possible from our side.

→ I am modifying P6 schedule to move installation on the rail from Jan 2022 to Mar 2022 following our current assembly plan

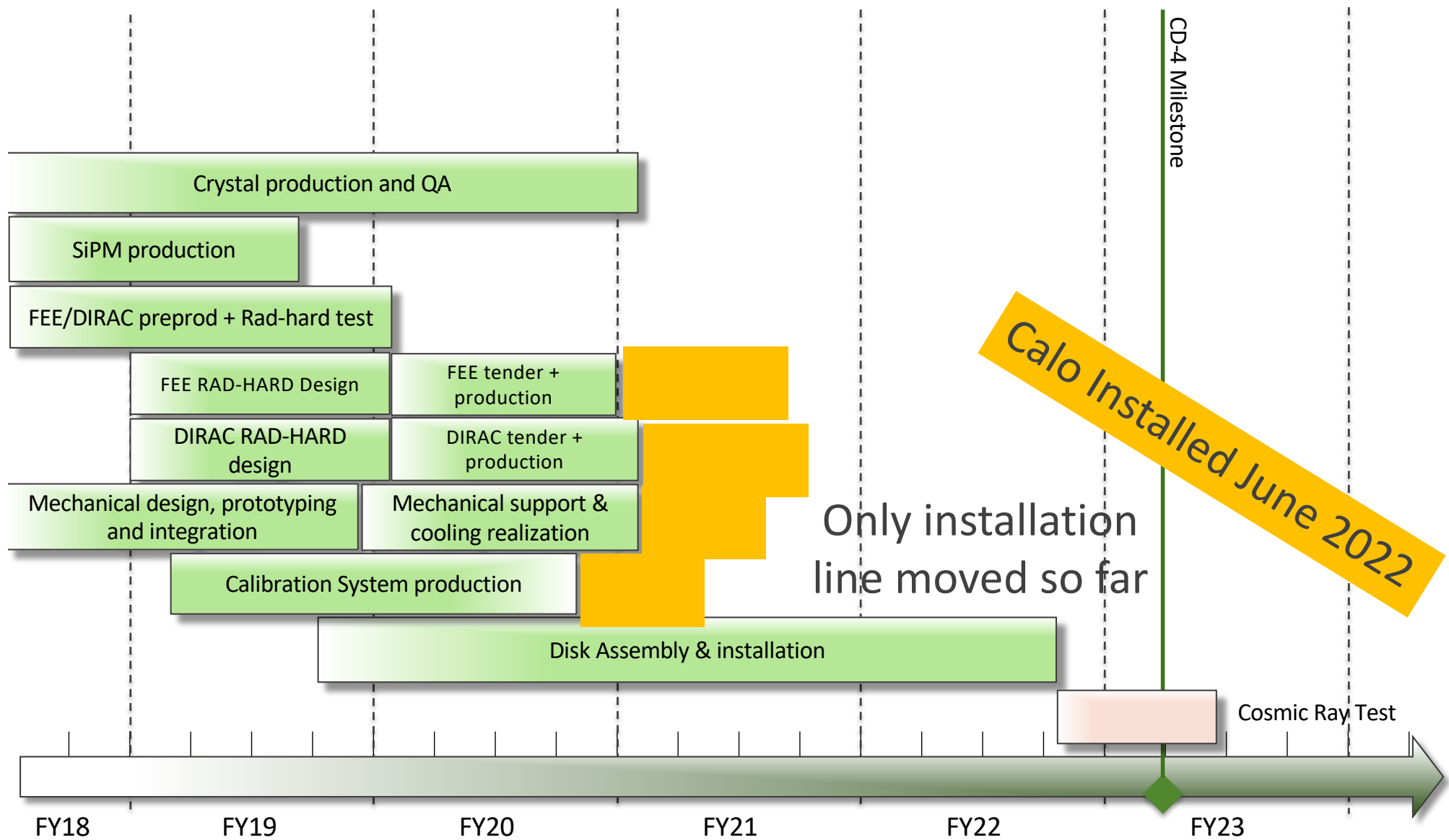
Updated schedule w/o INFN team in the Fall



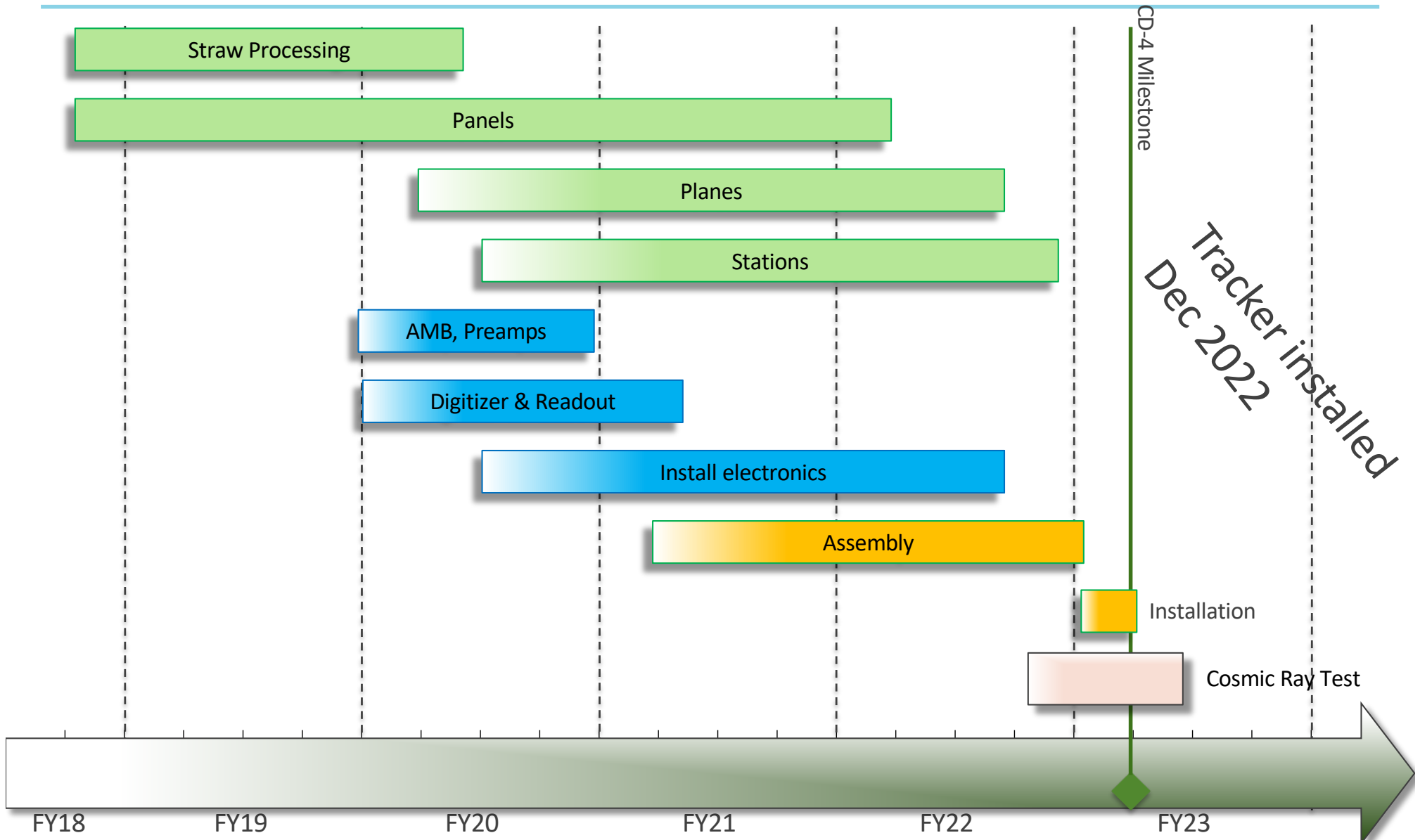
Assumes: we make SipM-gluing and FEE at LNF in the Fall. FEE-plate +IR in April-May 2021
 Csi mounting is shifted to June 2021. We guess that is very "difficult" to mount mechanics w/o our team
 We get a hit of additional 4 months. This goes OK in within 2 months with official schedule



Calorimeter Re-baseline Schedule - Prelim



Tracker Re-baseline Schedule - Preliminary



Re-Baseline Schedule - Preliminary

