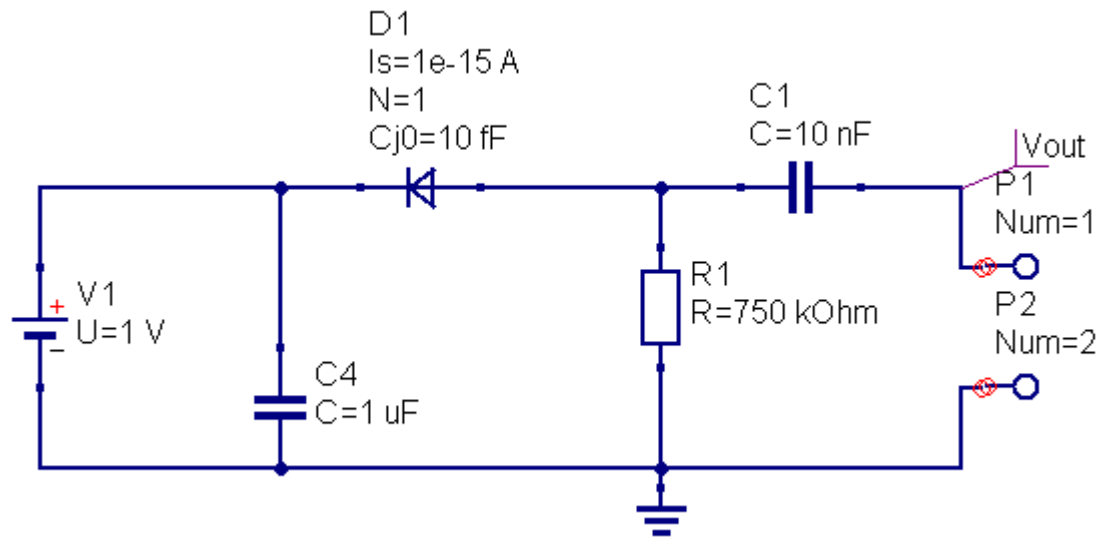


PD/LED

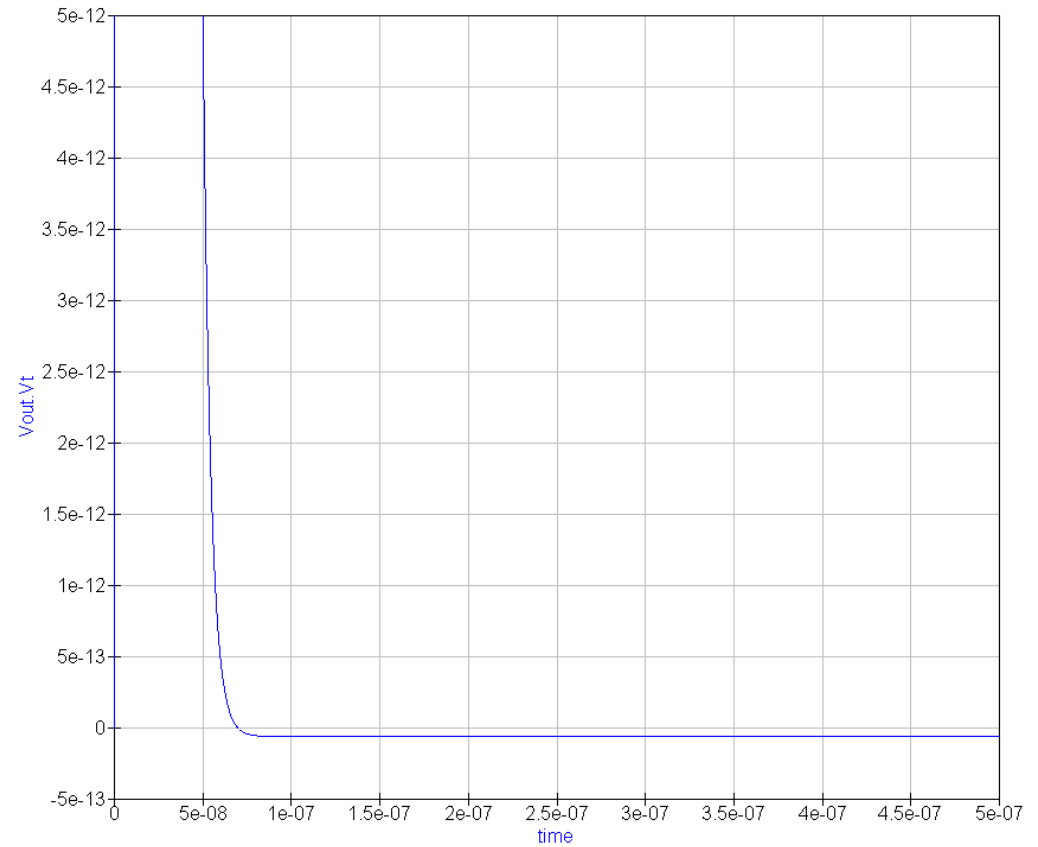
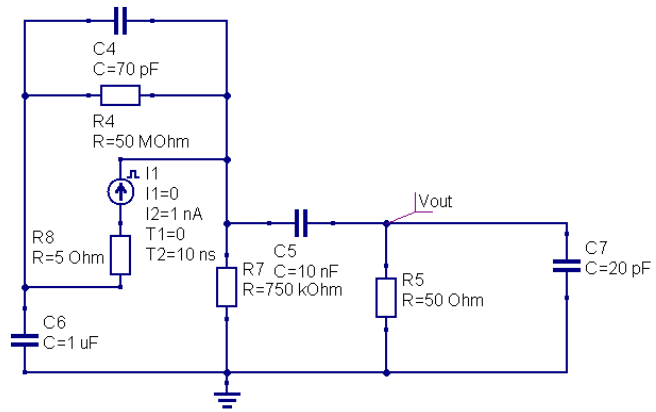
CASIS Time dependence

PD + pulsed LED acquired by oscilloscope.



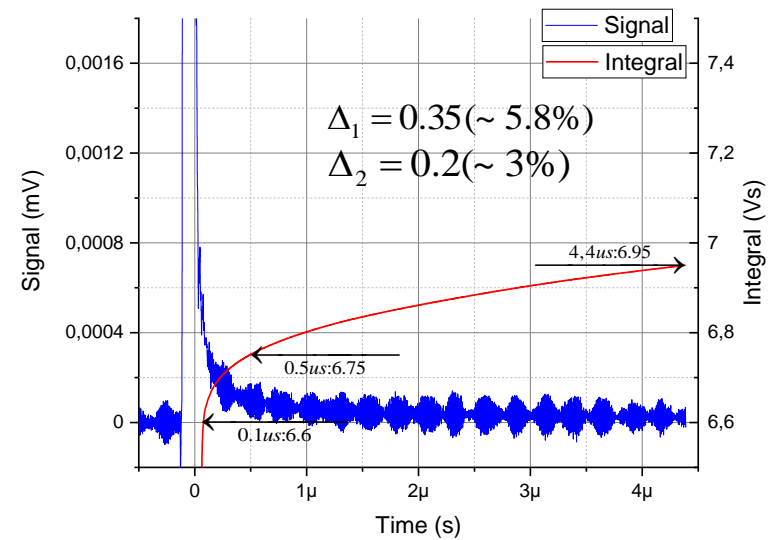
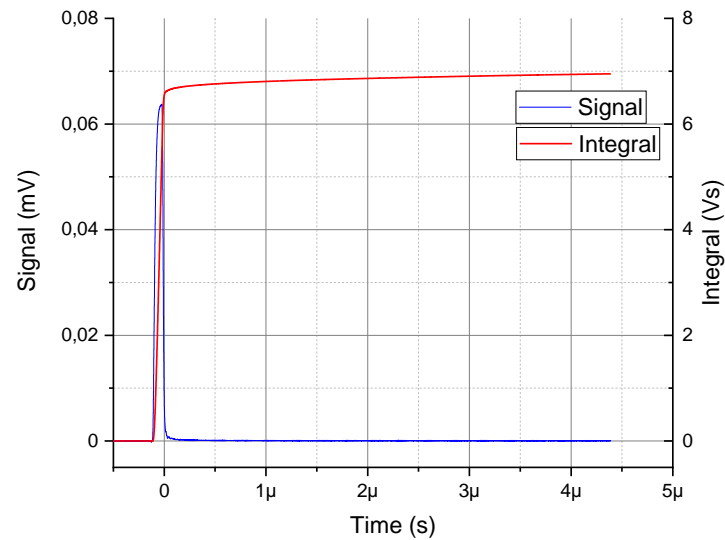
CASIS Time dependence

Simulation does not show any similar effect



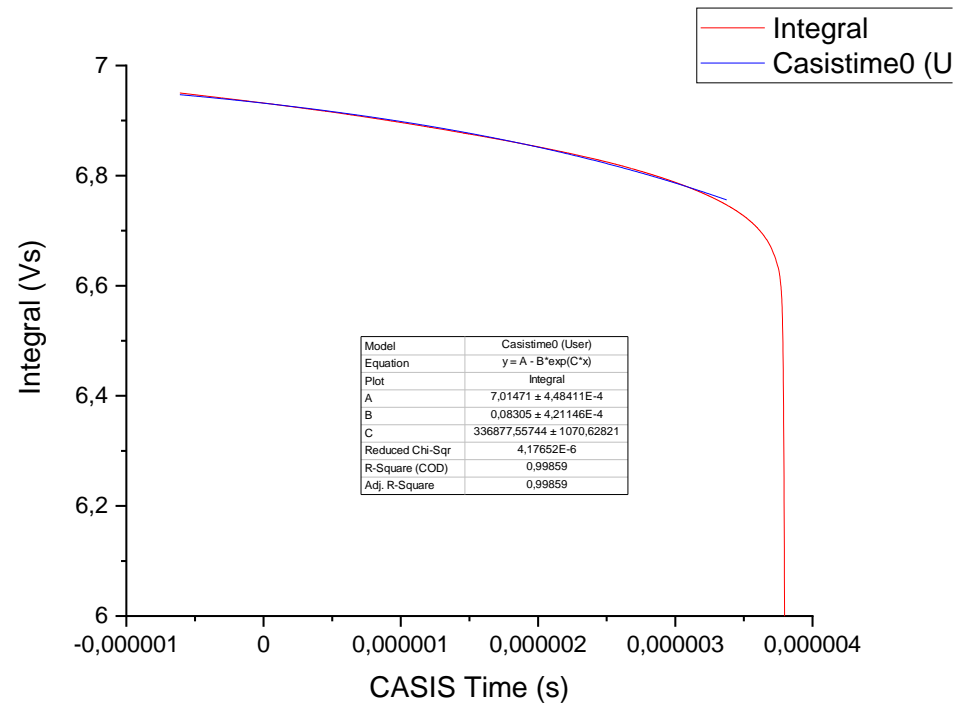
CASIS Time dependence

PD (old large PD) + pulsed LED (blue) acquired by oscilloscope.



CASIS Time dependence

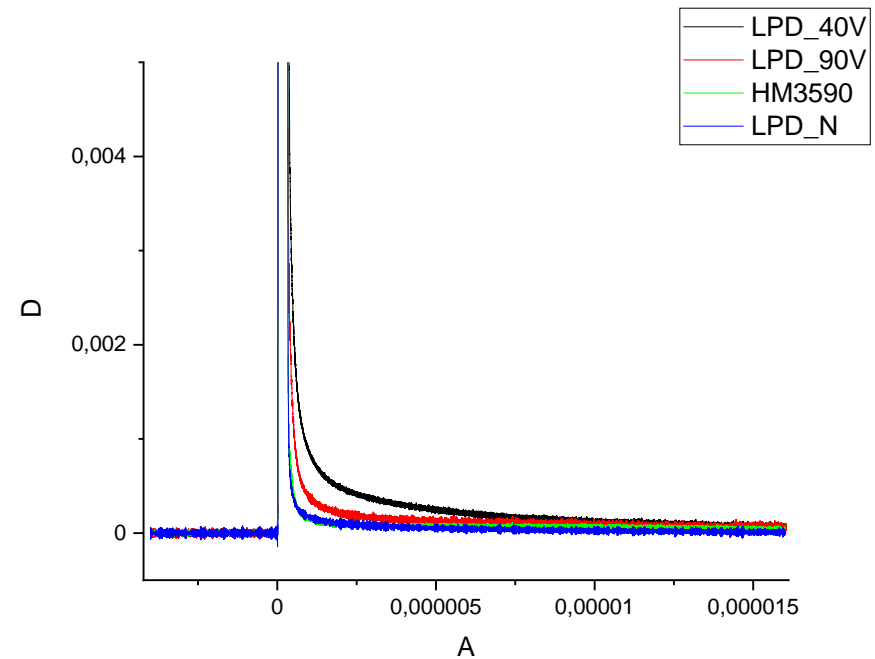
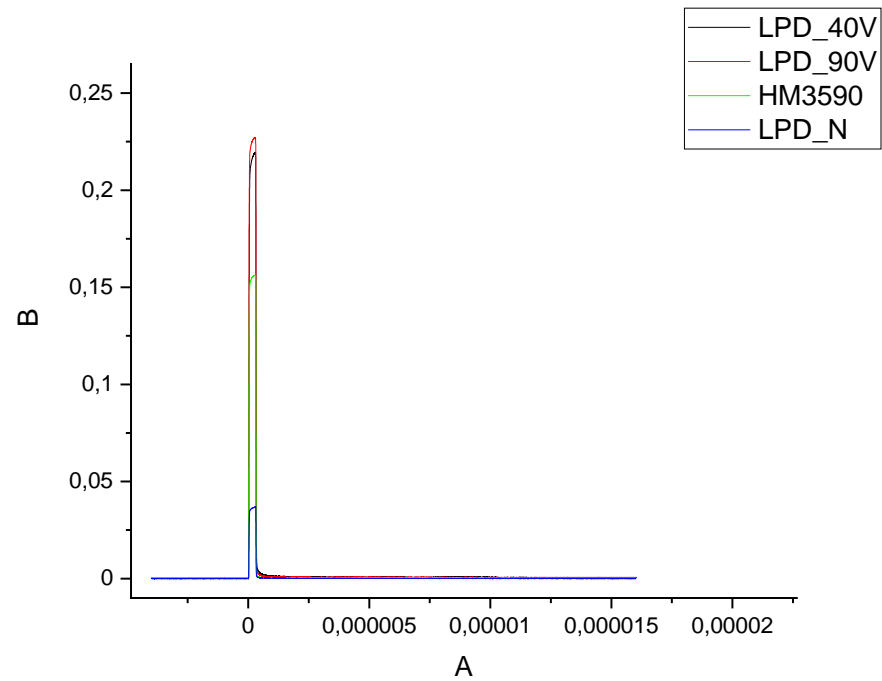
PD (old large PD) + pulsed LED (blue) acquired by oscilloscope.



Time constant = 2,97 ms
Corresponds to Hydra measurements and fit

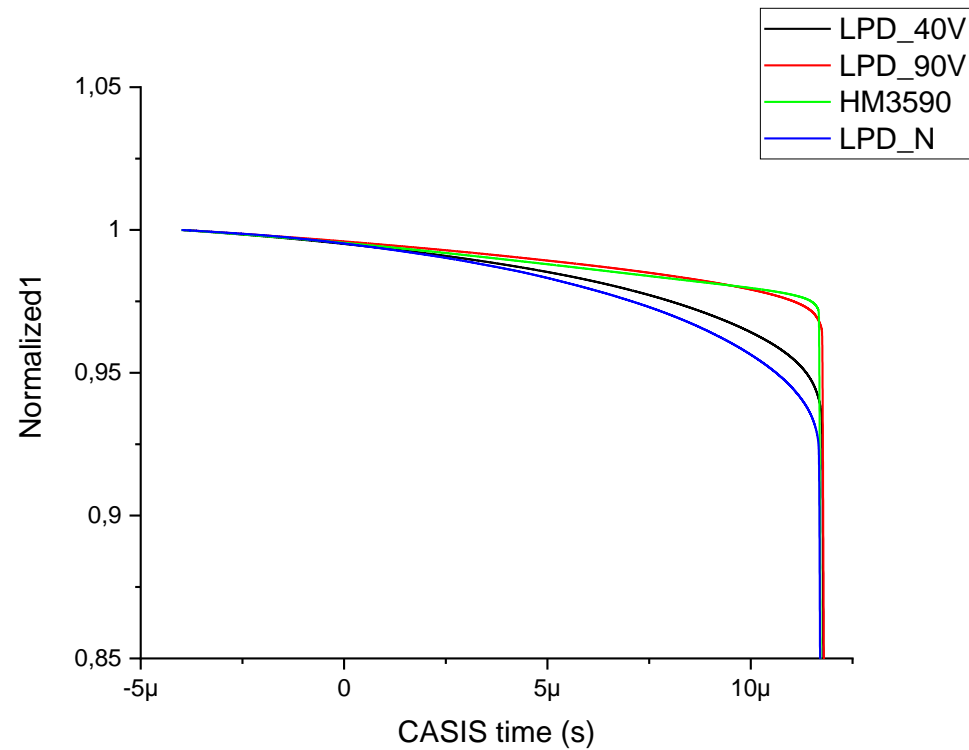
CASIS Time dependence

We have tested a few PDs: Old large PD, new large PD, HM3590



CASIS Time dependence

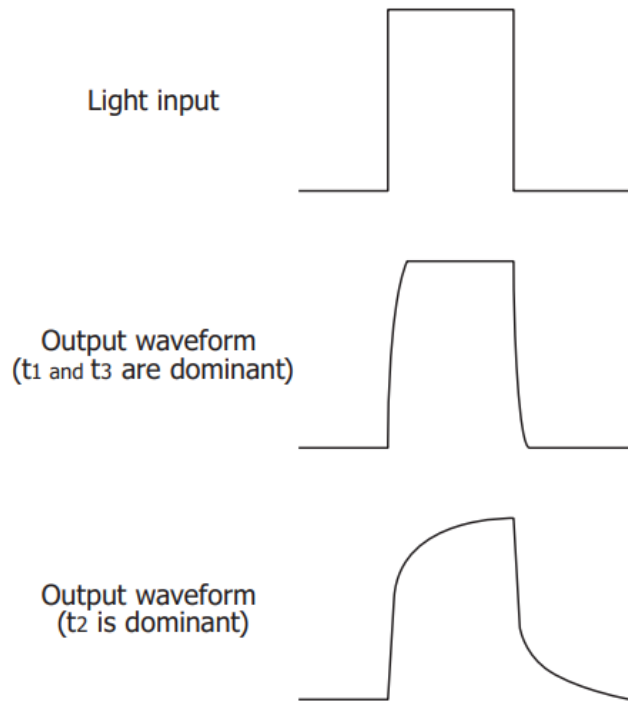
We have tested a few PDs: Old large PD, new large PD, HM3590



Strong bias dependence for old large PD!

CASIS Time dependence

We have tested a few PDs: Old large PD, new large PD, HM3590



Hamamatsu and other sources confirm this behavior.
Can be minimized by strong overvoltage

LED test

Test with PMT and 2 LED (blue and yellow)

