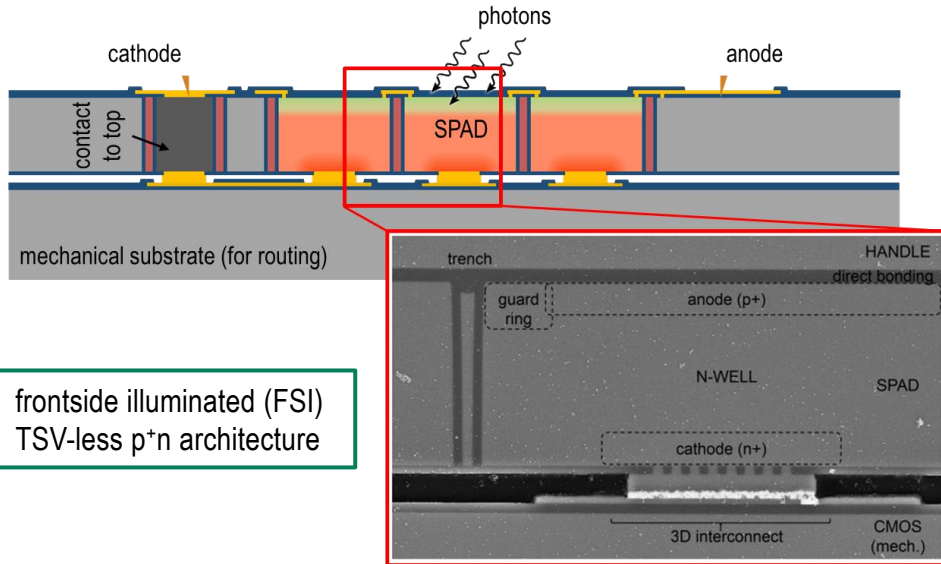


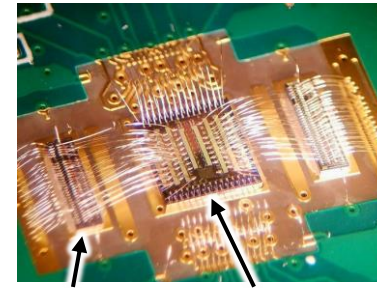
DEVELOPMENT OF SINGLE-PHOTON AVALANCHE DIODE ARRAY FOR PARTICLE PHYSICS AND MEDICAL IMAGING

Characterization of 3D-integrated SPADs:



frontside illuminated (FSI)
TSV-less p+n architecture

External readout circuit test setup



SPADs Quenching circuit

Wafer mapping

