

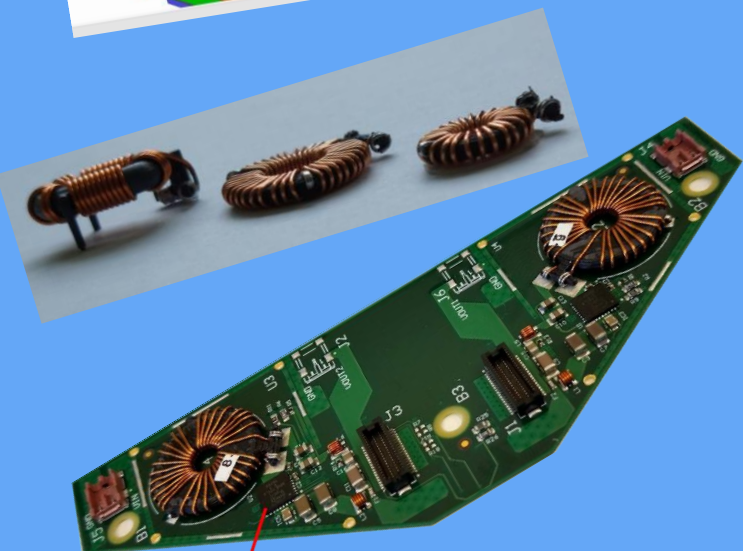
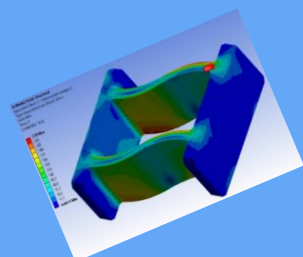
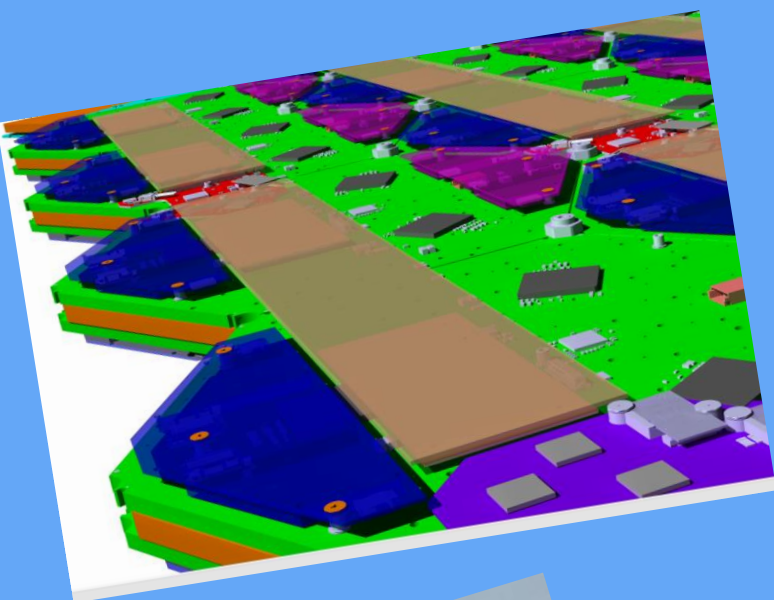
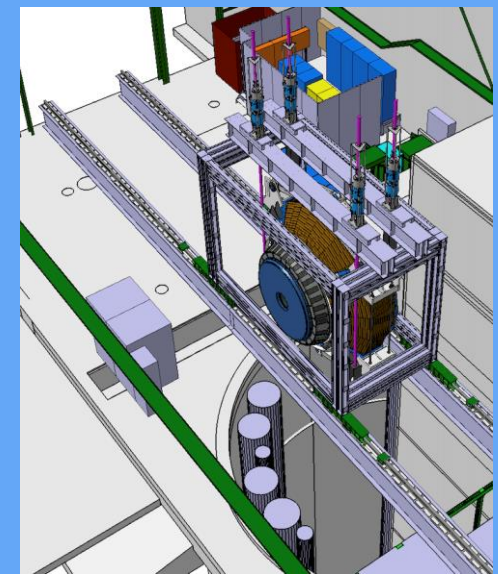
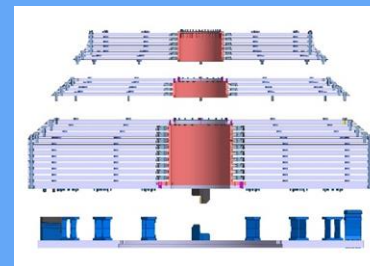
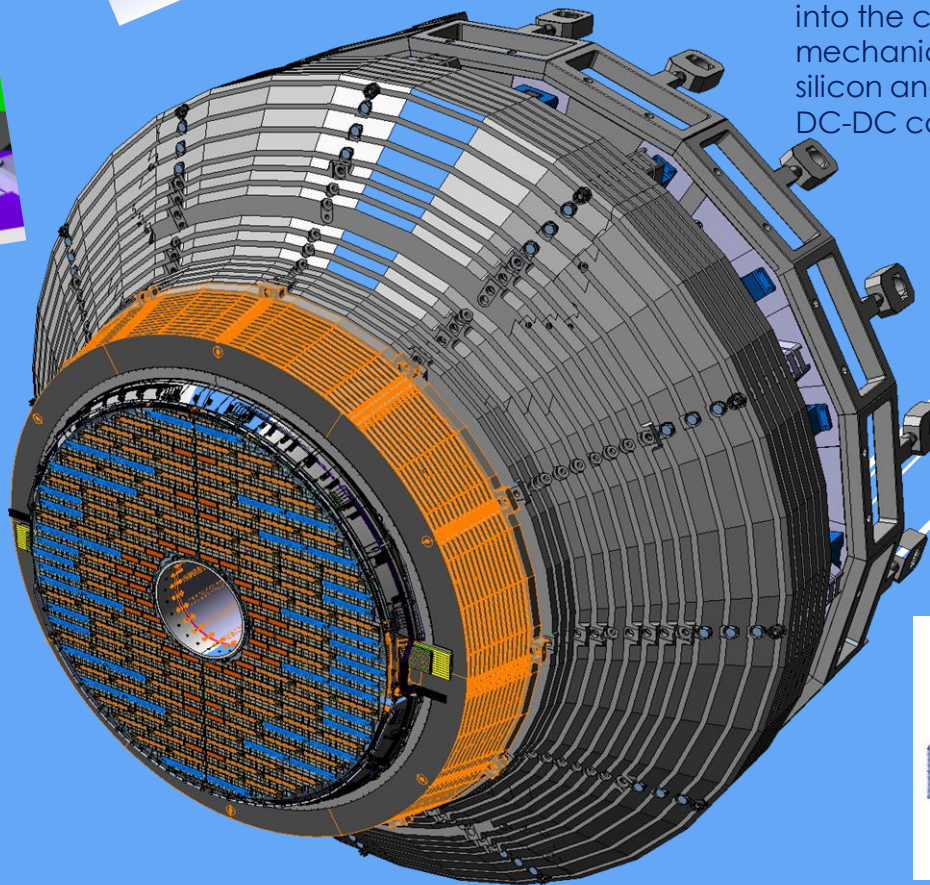
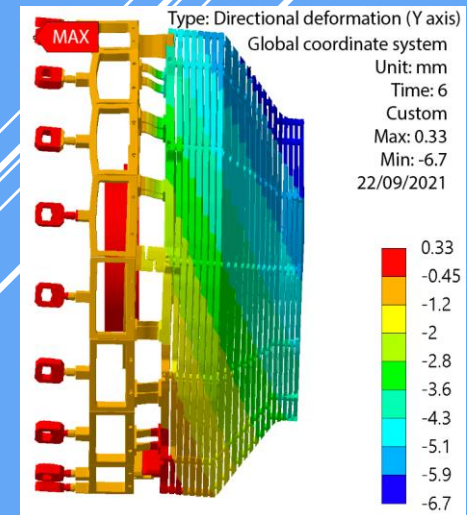


# Engineering challenges in mechanics and electronics in the world's first particle-flow calorimeter at a hadron collider: The CMS High-Granularity Calorimeter



H. Gerwig, CERN, on behalf of the CMS Collaboration

Nearly countless are the challenges to stay compact, not disturbing the tiling, limit the deformation, cool with biphase CO<sub>2</sub>, allow for horizontal assembly and cassette insertion, swivel afterwards to vertical and lower it 100m deep into the cavern. From big mechanics to small ASICs, fragile silicon and custom made coils for DC-DC converters.....



bPOL12V