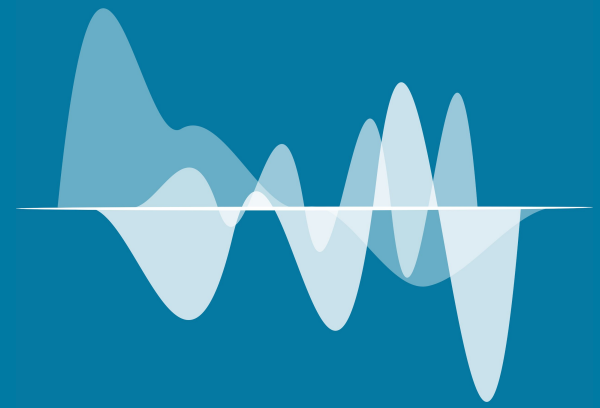


# Artificial Intelligence in Medicine



# AIM

Database of MR images of prostate cancer

M. Marrale



UNIVERSITÀ  
DEGLI STUDI  
DI PALERMO



Azienda Ospedaliera Universitaria  
Policlinico Paolo Giaccone  
di Palermo

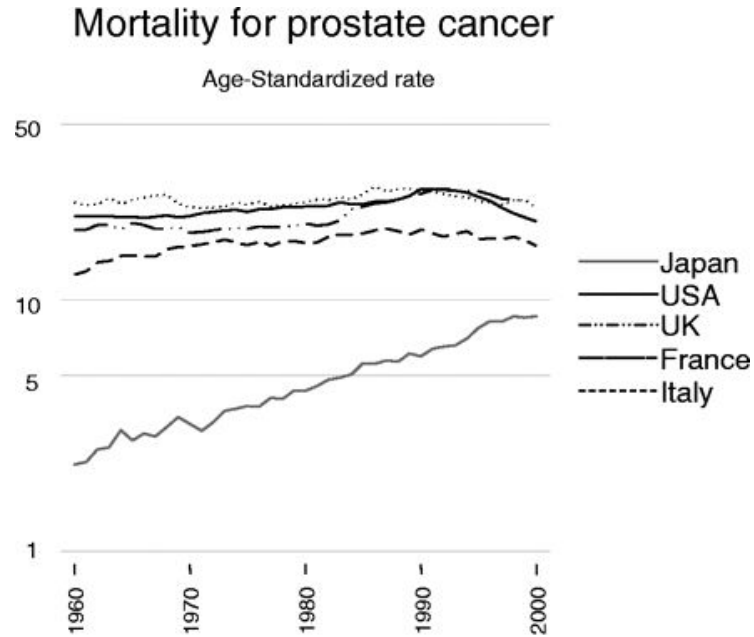


Marrale Maurizio  
Tomarchio Elio  
Collura Giorgio  
Bartolotta Antonio  
D'Oca Maria Cristina  
Borgese Riccardo Filippo

Giuseppe Salvaggio  
Massimo Midiri  
Roberto Lagalla  
Cesare Gagliardo

## Incidency

Prostate cancer affects about 14% of European male population but mortality is around 3%.



Source: WHO Mortality Database

Age-standardized mortality rates (numbers per 1000) for prostate cancer.

# Classification

## PI-RADS

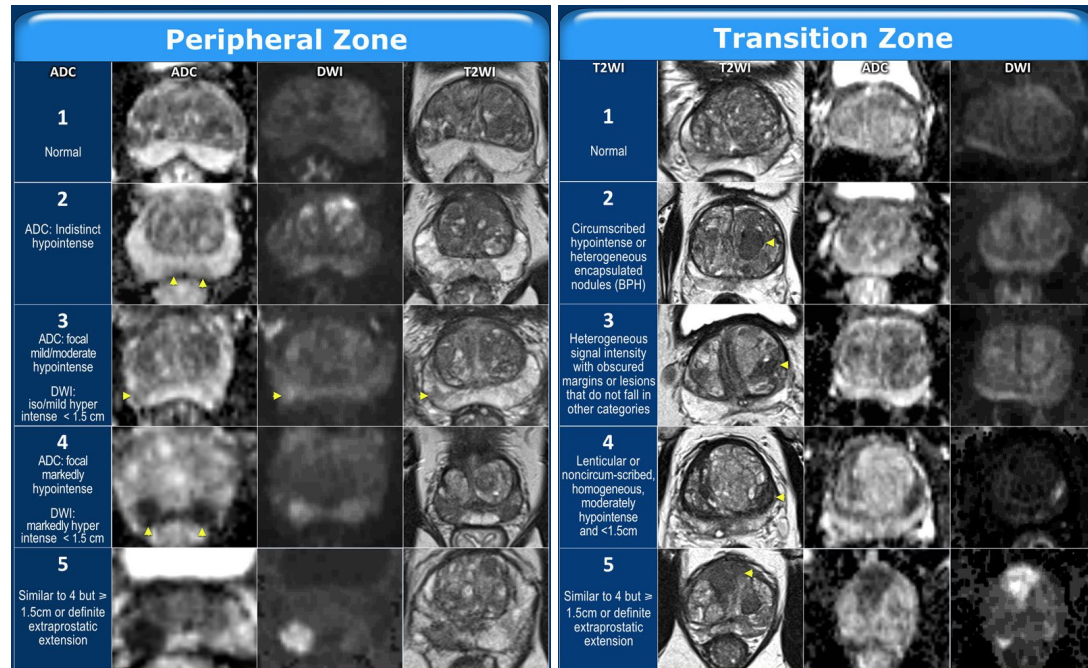
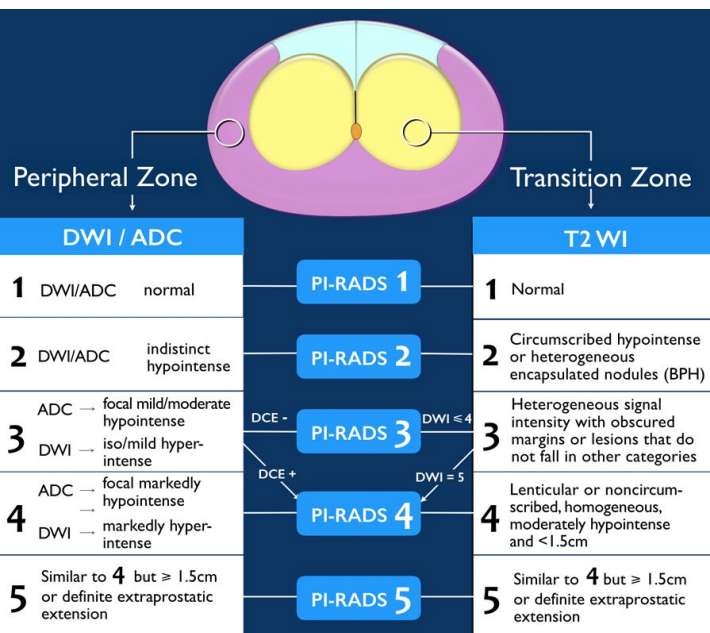
PI-RADS 1 = Very low (clinically significant cancer highly unlikely)

PI-RADS 2 = Low (clinically significant cancer unlikely)

PI-RADS 3 = Intermediate (clinically significant cancer equivocal)

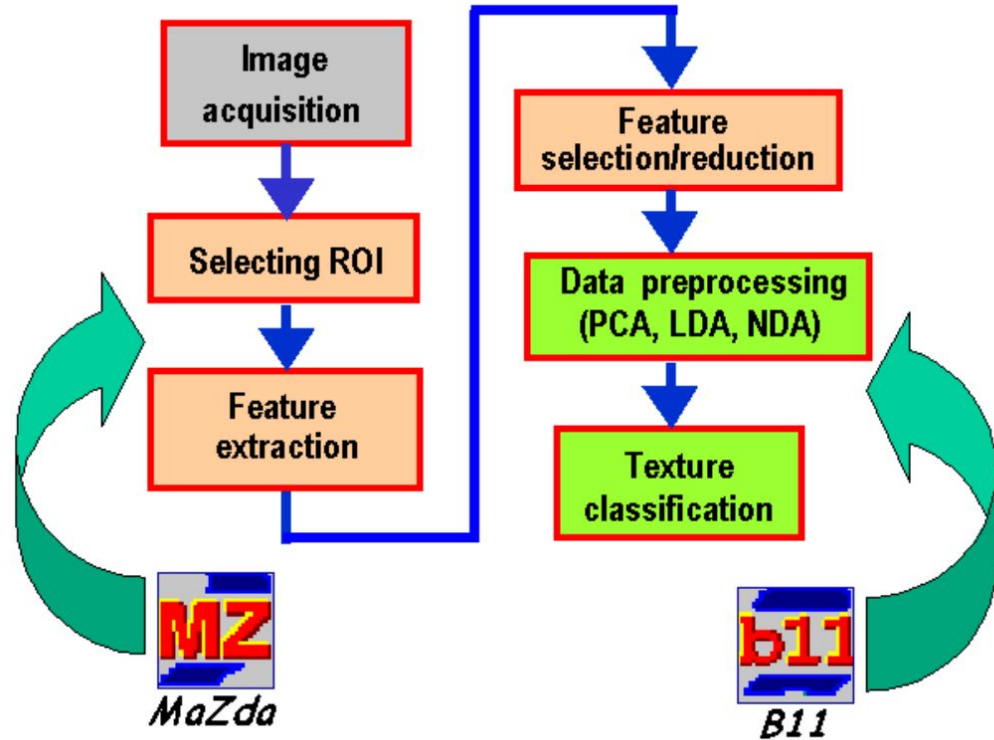
PI-RADS 4 = High (clinically significant cancer likely)

PI-RADS 5 = Very high (clinically significant cancer highly likely)



- 46 Patients
- T2 and ADC images (not in my possession but available)
- Table of the features extracted through Mazda software from the T2 and ADC images
- Histological results of biopsy

## Feature extraction



thank you



AIM4