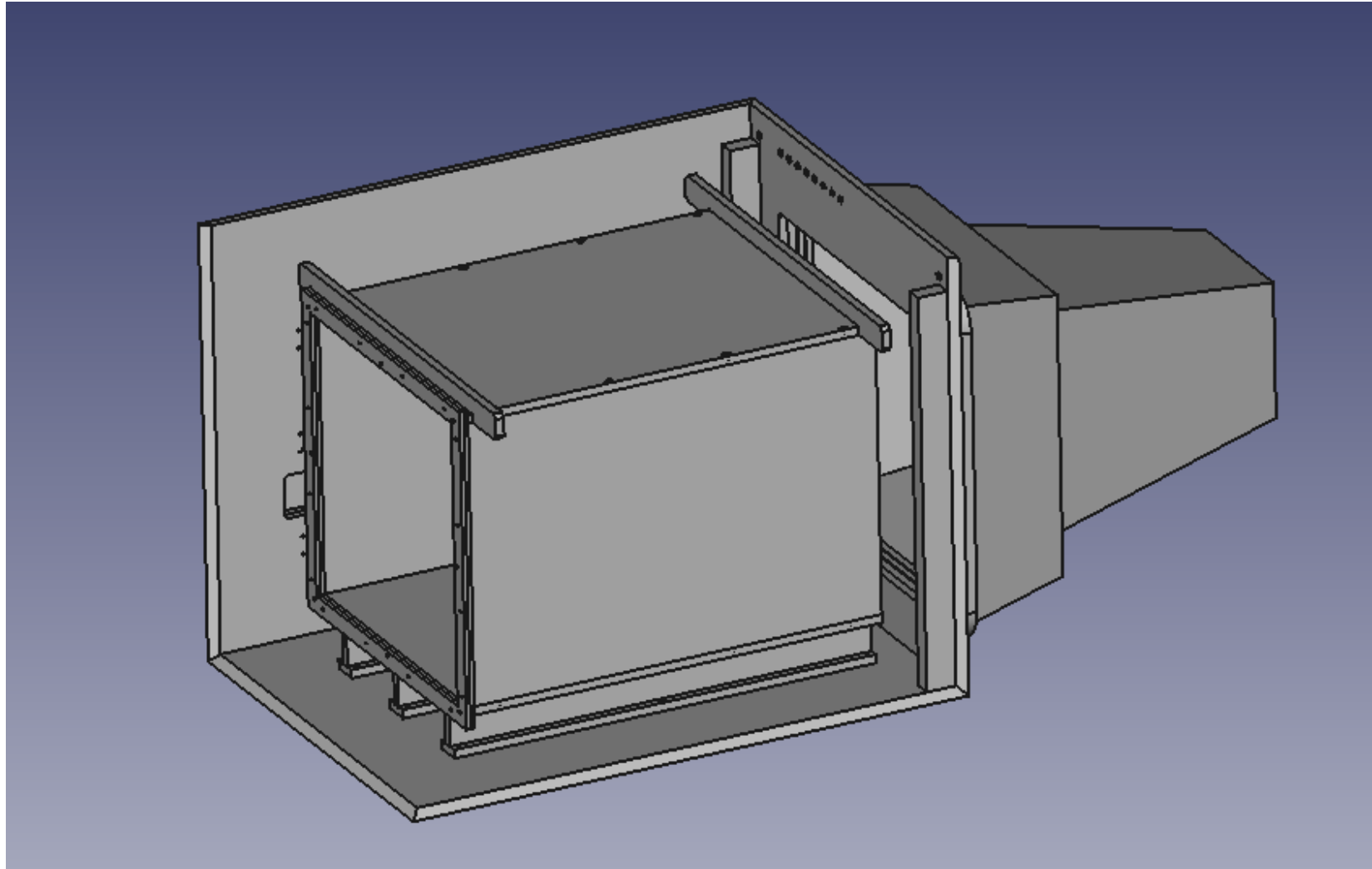
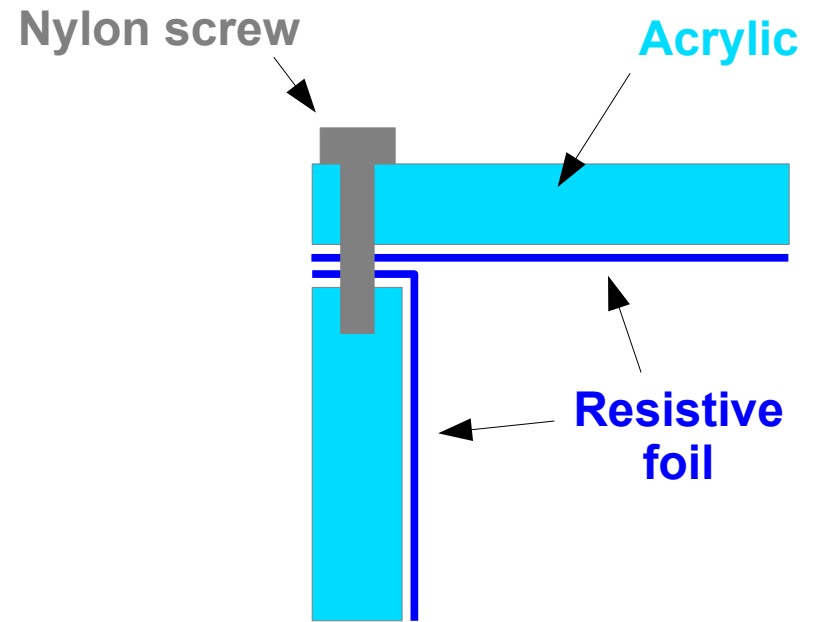
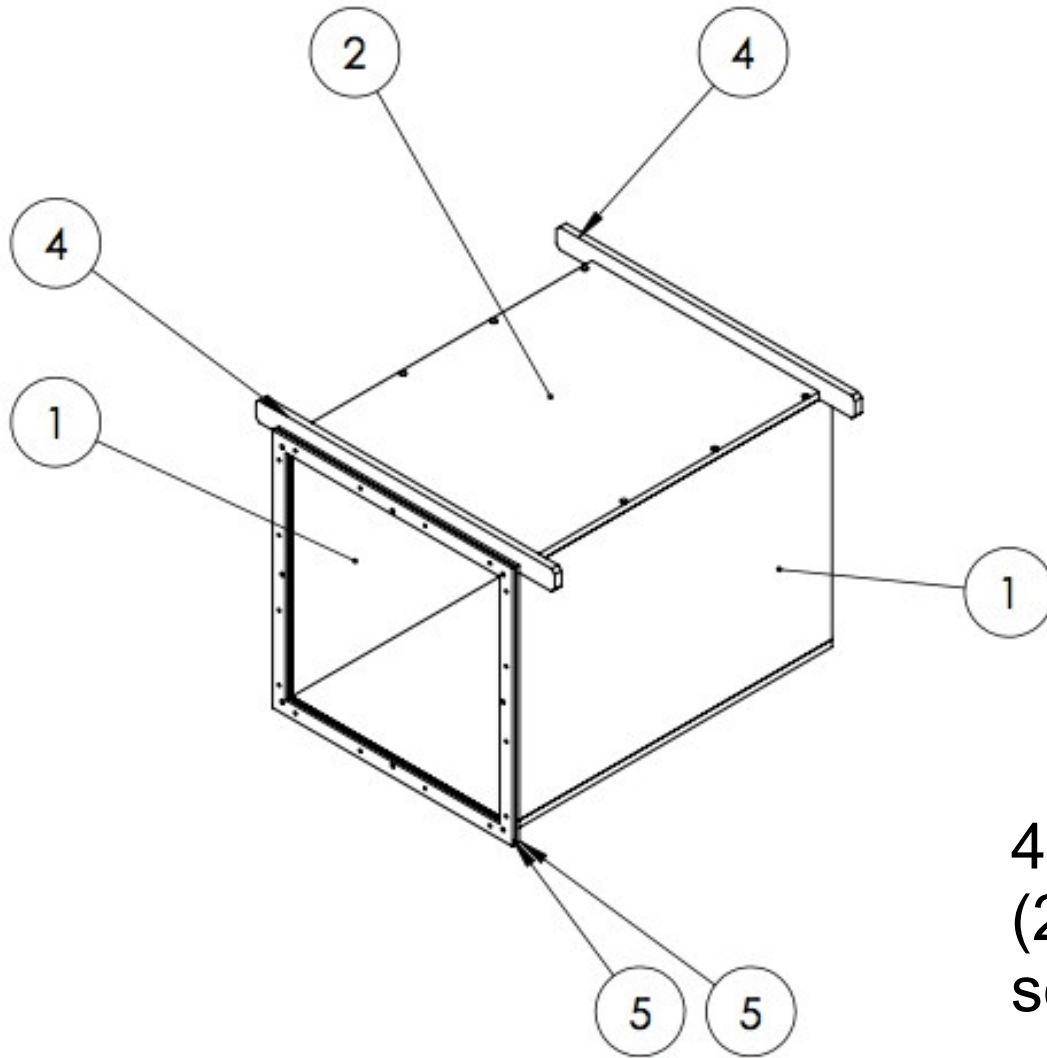


LIME w/ Resistive-foil Field Cage





4 separate walls
(2 x item 1 + 2 x item 2)
screwed together

Double frame for cathode foil
installation, screwed to the field
cage

Production

- Components to build the resistive-foil filed cage are in production @ Palazzi S.r.l. (final drawings just approved)
- Immediately after, the company will build a second version of the gas-tight box, with additional windows for laser measurements
 - the resistive-foil field cage will be assembled inside the old box after the tests with the copper rings
 - the copper rings will be moved to the new box for laser tests in Rome (→ need to assembly a new 3GEM stack, e.g. on the available FR4 frame)