



Searching for axionlike dark matter with CASPEr-electric

$$\left. \begin{array}{l} \text{EDM coupling: } H_{EDM} \propto \boldsymbol{\sigma} \cdot (a_0 \mathbf{E}^*) \cos(\omega_a t) \\ \text{Gradient coupling: } H_{grad} \propto \boldsymbol{\sigma} \cdot (\nabla a_0) \cos(\omega_a t) \end{array} \right\} H_{CASPEr} \propto \boldsymbol{\sigma} \cdot \mathbf{B}_1^* \cos(\omega_a t)$$



Searching for axionlike dark matter with CASPER-electric

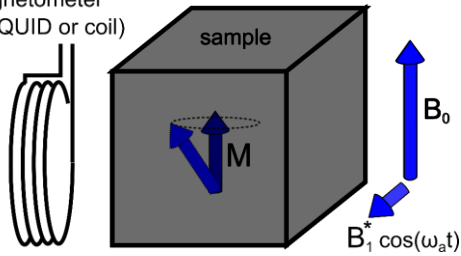
$$\text{EDM coupling: } H_{EDM} \propto \boldsymbol{\sigma} \cdot (a_0 \mathbf{E}^*) \cos(\omega_a t)$$

$$\text{Gradient coupling: } H_{grad} \propto \boldsymbol{\sigma} \cdot (\nabla a_0) \cos(\omega_a t)$$

$$H_{CASPER} \propto \boldsymbol{\sigma} \cdot \mathbf{B}_1^* \cos(\omega_a t)$$

$$\hbar\omega_a = g\mu B_0$$

magnetometer
(eg, SQUID or coil)



Using solid-state
Nuclear Magnetic
Resonance (NMR) to
search for axionlike
dark matter



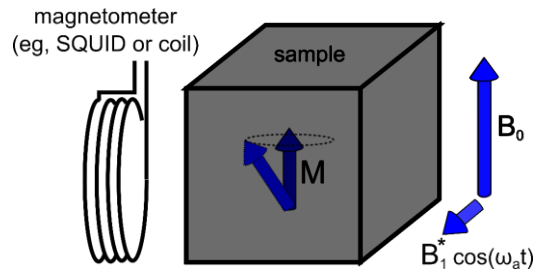
Searching for axionlike dark matter with CASPER-electric

$$\text{EDM coupling: } H_{EDM} \propto \boldsymbol{\sigma} \cdot (a_0 \mathbf{E}^*) \cos(\omega_a t)$$

$$\text{Gradient coupling: } H_{grad} \propto \boldsymbol{\sigma} \cdot (\nabla a_0) \cos(\omega_a t)$$

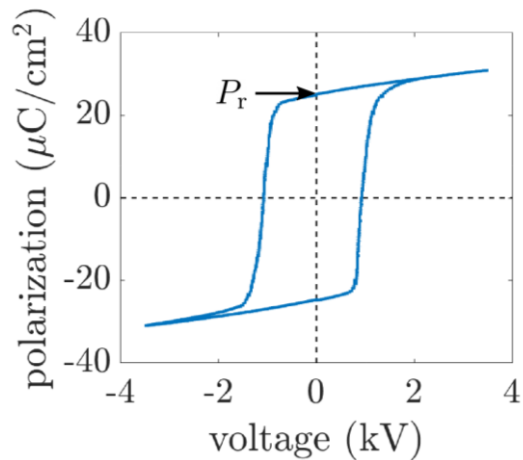
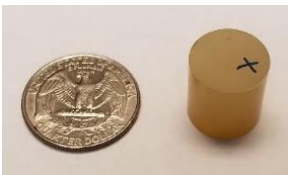
$$H_{CASPER} \propto \boldsymbol{\sigma} \cdot \mathbf{B}_1^* \cos(\omega_a t)$$

$$\hbar\omega_a = g\mu B_0$$



Using solid-state
Nuclear Magnetic
Resonance (NMR) to
search for axionlike
dark matter

^{207}Pb based PMN-PT
ferroelectric crystal
with large effective
electric field





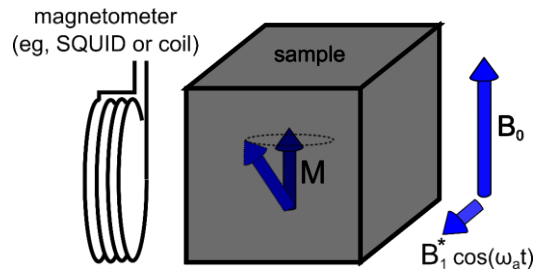
Searching for axionlike dark matter with CASPER-electric

EDM coupling: $H_{EDM} \propto \sigma \cdot (a_0 \mathbf{E}^*) \cos(\omega_a t)$

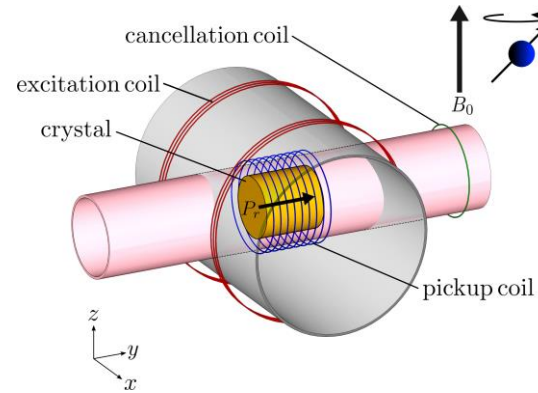
Gradient coupling: $H_{grad} \propto \sigma \cdot (\nabla a_0) \cos(\omega_a t)$

$H_{CASPER} \propto \sigma \cdot \mathbf{B}_1^* \cos(\omega_a t)$

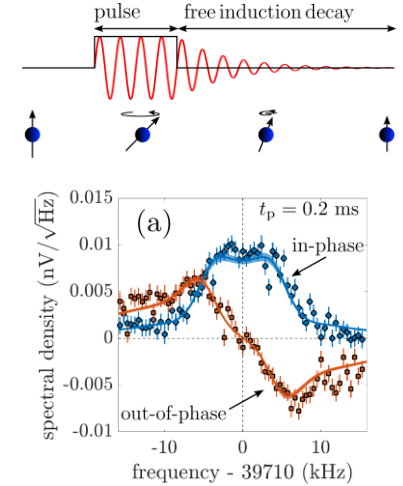
$\hbar\omega_a = g\mu B_0$



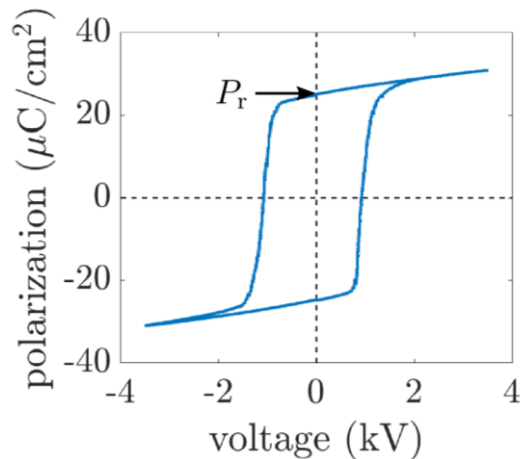
Using solid-state Nuclear Magnetic Resonance (NMR) to search for axionlike dark matter



Pulsed NMR measurements for system calibration



^{207}Pb based PMN-PT ferroelectric crystal with large effective electric field





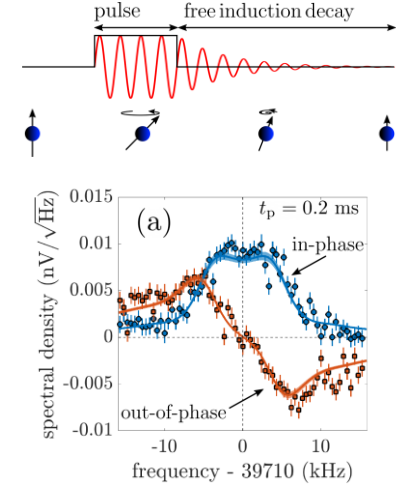
Searching for axionlike dark matter with CASPER-electric

EDM coupling: $H_{EDM} \propto \sigma \cdot (a_0 \mathbf{E}^*) \cos(\omega_a t)$

Gradient coupling: $H_{grad} \propto \sigma \cdot (\nabla a_0) \cos(\omega_a t)$

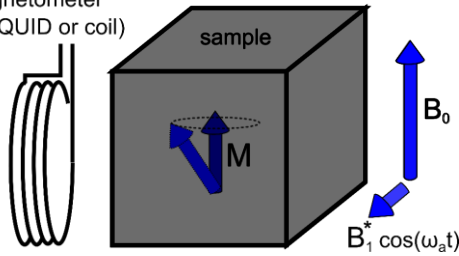
$H_{CASPER} \propto \sigma \cdot \mathbf{B}_1^* \cos(\omega_a t)$

Pulsed NMR measurements for system calibration

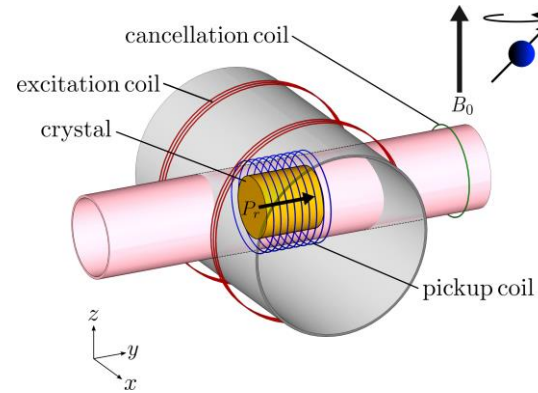


$\hbar\omega_a = g\mu B_0$

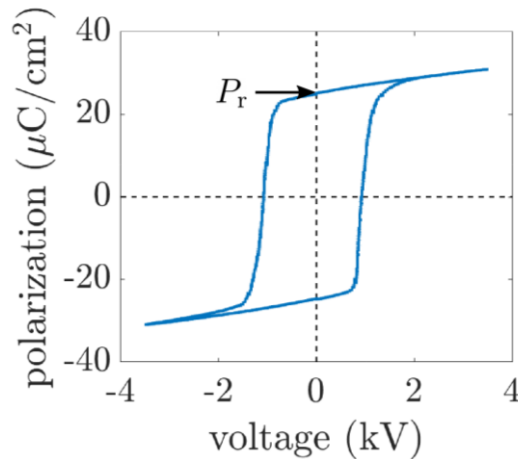
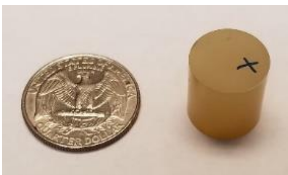
magnetometer (eg, SQUID or coil)



Using solid-state Nuclear Magnetic Resonance (NMR) to search for axionlike dark matter



^{207}Pb based PMN-PT ferroelectric crystal with large effective electric field



Axionlike dark matter search results

