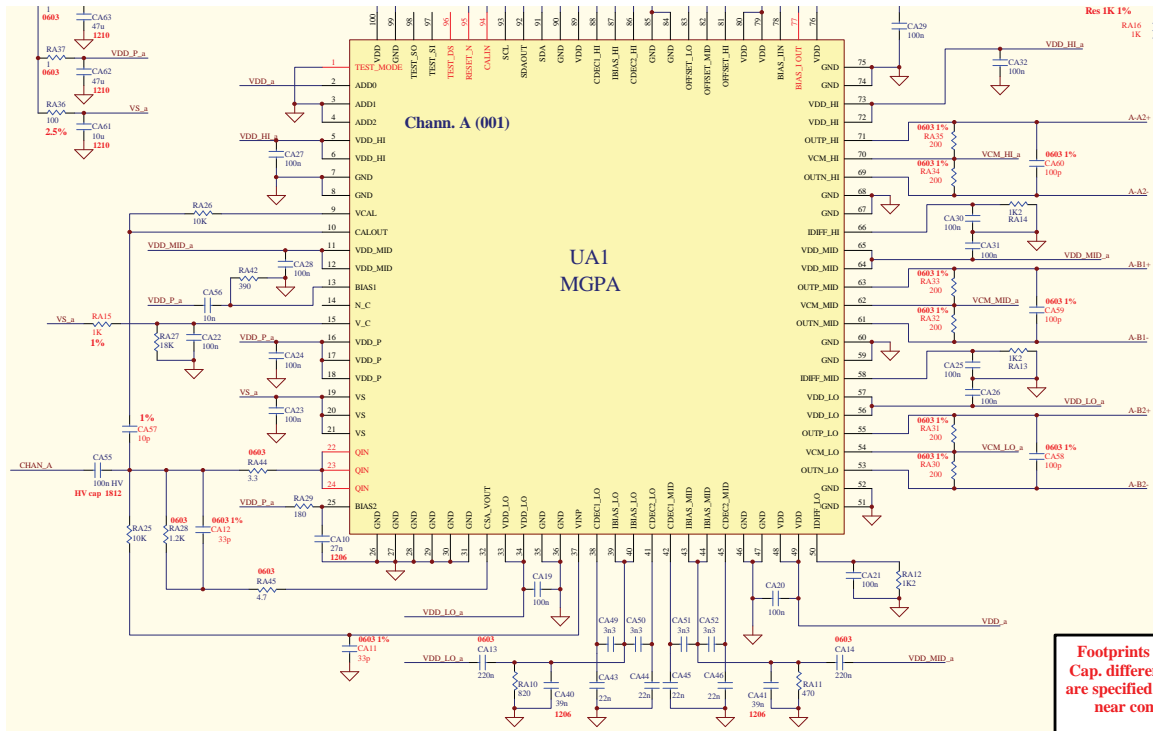


Test beam preparations (I) – CMS DAQ

- David Doll and Piti Ongmonkolkul are working on the CMS DAQ system, with help from Liyuan Zhang and Ren-yuan Zhu.
 - Able to make changes and compile driver code.
 - Working on the initialization problem.
 - Ren-yuan checking on cables/connectors at CERN.
 - System will be shipped complete except for cooler (one exists at CERN that can be used), and minor power supply (the high current power supply will be shipped).

Test beam preparations (II) – CMS preamp

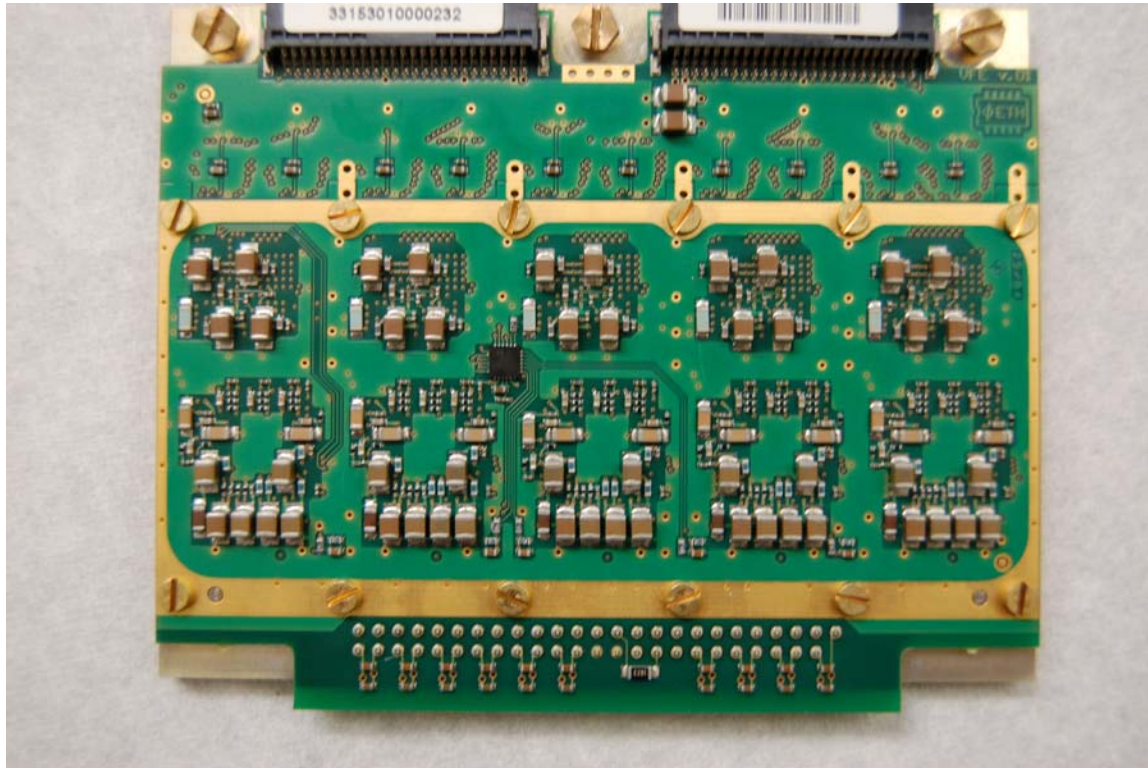
Existing shaping is 40 ns; 4 capacitors/channel to change.



M. Raymond, J. Crooks, M. French, G. Hall, The MGPA Electromagnetic Calorimeter Readout Chip for CMS, IEEE Trans. Nucl. Sci., **52** (2005), 756,

<http://ieeexplore.ieee.org/stamp/stamp.jsp?arnumber=01487720>

CMS VFE card



We don't have a pcb layout with sufficient resolution; Ren-yuan is checking at CERN.

Test beam preparations (III) – CLEO CsI

Four diodes/crystal.
 Have preamps, David Asner
 sent schematic

