

LABORATORI NAZIONALI DI LEGNARO

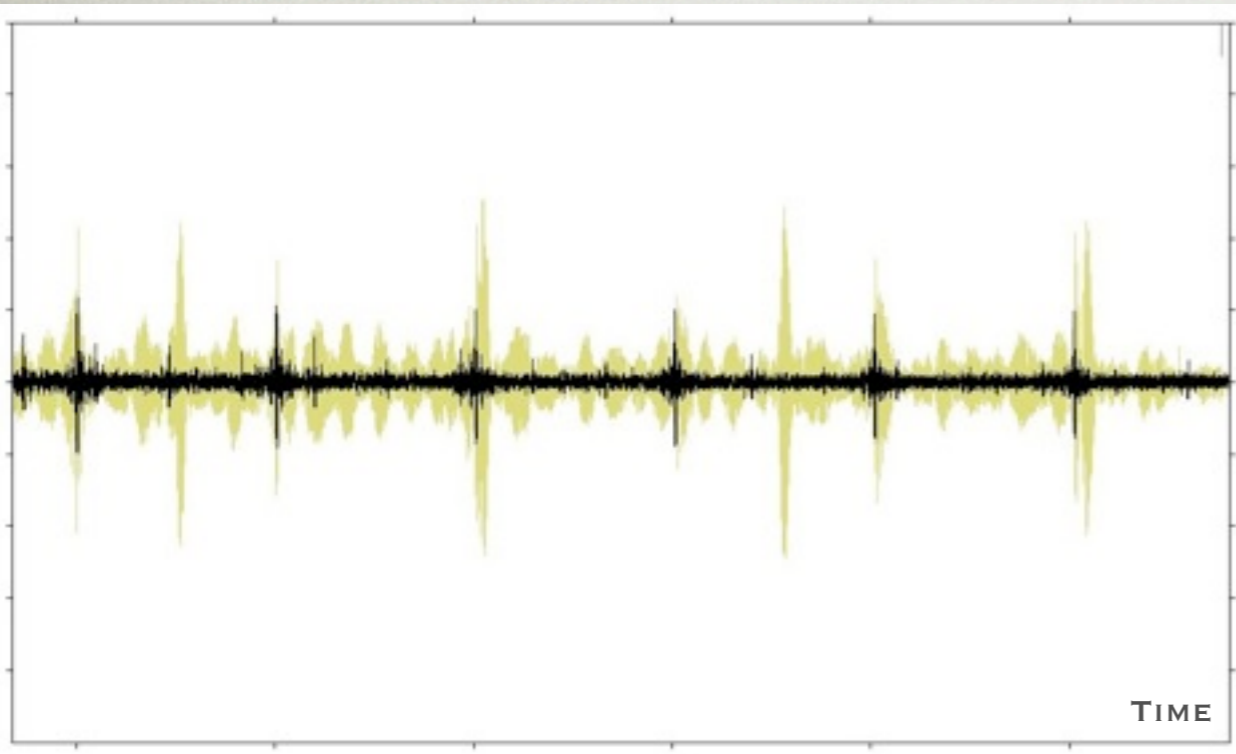
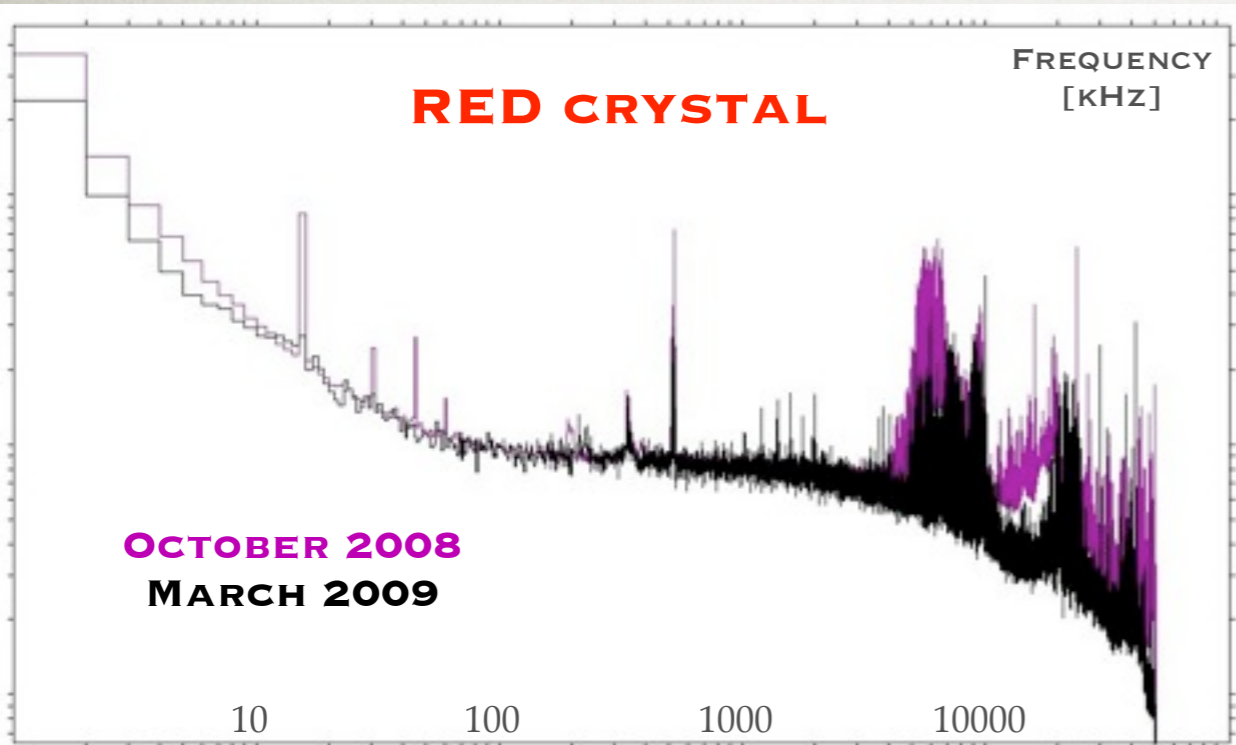
HOST LABORATORY FOR AGATA DEMONSTRATOR



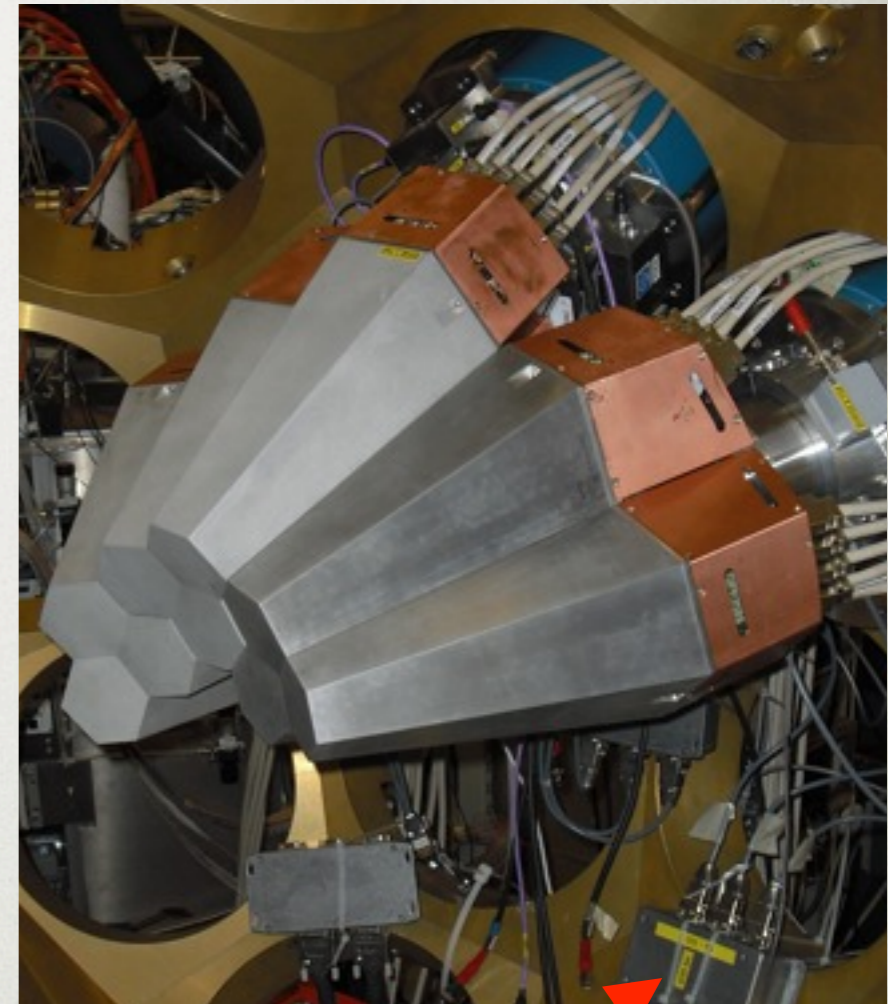
R. MENEGAZZO
INFN - SEZIONE DI PADOVA



FIGHTING GROUND LOOPS



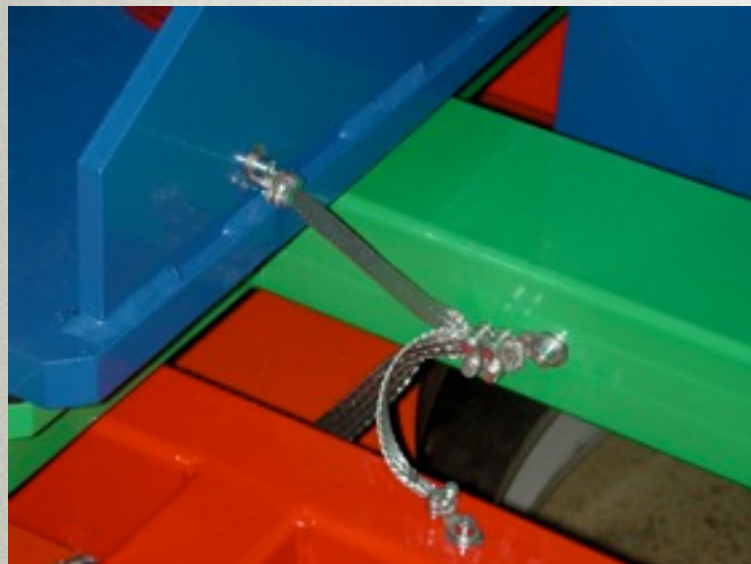
UPS FILTER



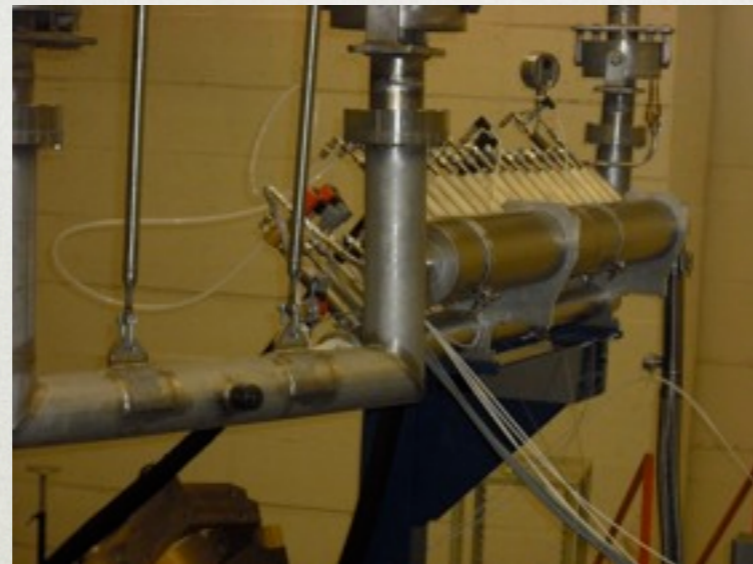
LC LOW VOLTAGE FILTER

AXIS POWER SUPPLY
GROUNDED PT100 SHIELDING

THE GROUNDING



DETECTOR
REFURBISHMENT

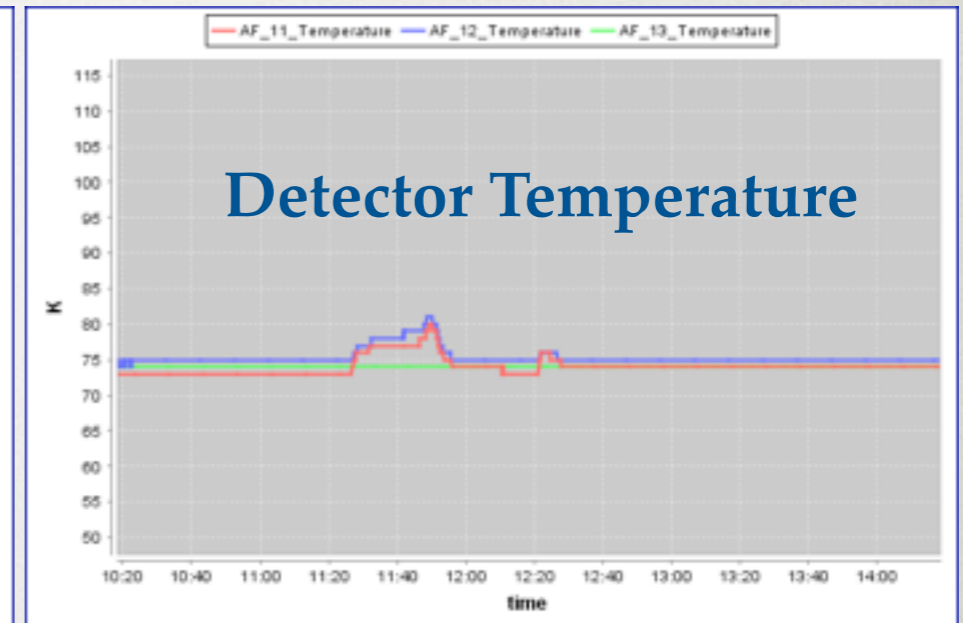
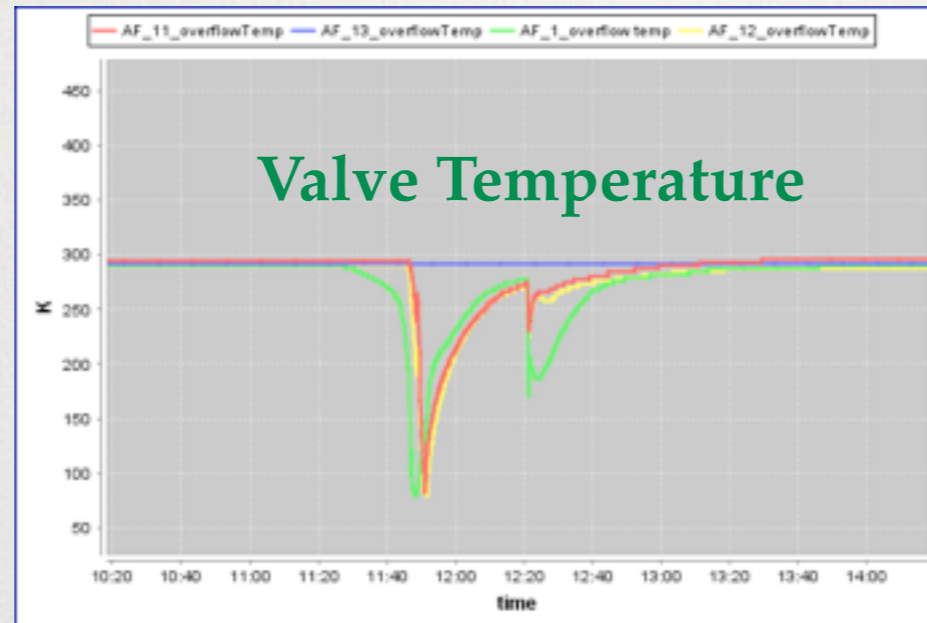


COPPER BARS AND WIRES
INSULATED LN₂ AND BEAM LINE

DETAILED ANALYSIS
AND PRESCRIPTIONS
(CONTRIBUTION N.KARKOUR)

AUTOFILL SYSTEM

(MAXIMUM THREE CLUSTERS)



AUTOFILL IN RELIABLE OPERATION SINCE DECEMBER 2008 DESPITE MISSING FINAL VCC. CONTINUOUS MONITOR BY LOCAL PEOPLE

ONLY PROBLEM SO FAR (HUMAN MISTAKE TRIGGERED BY GUI BUG) LEAD TO ACCIDENTAL WARMUP OF ATC1 AND ATC2 IN NOVEMBER 2009

INFRASTRUCTURE TEAM

SEPTEMBER AND DECEMBER 2009

MOST OF THE TEMPORARY DSS WAS REMOVED AND A FRESH INSTALLATION OF A “FINAL VERSION” WAS COMPLETED.

CURRENTLY WE HAVE AXIS FOR 3 (+2) DETECTORS, ATC2 AND ATC3 HAVE HV CONTROL. OPC SERVER AND FIELDBUS NETWORK ARE FULLY OPERATIONAL.



HOST LABORATORY DUTIES

VALVE POWER SUPPLY
AND CONTROL CRATE



CABLES
LABELS

...

COMPUTING ROOM
STORAGE SYSTEM

...



DETECTOR LABORATORY

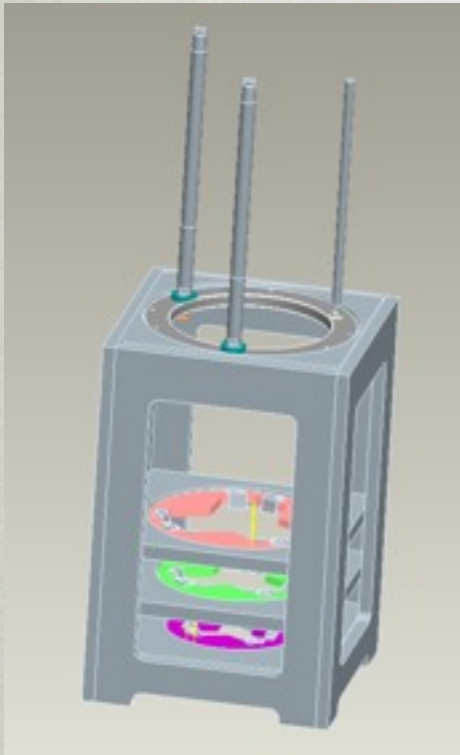
AUTOFILL HARDWARE
MAINTENANCE



WORK IN PROGRESS

- VALVE CONTROL CRATE FOR 9 DETECTORS
- AGATA DETLAB LN₂ FILLING SYSTEM
- OVERPRESSURE BYPASS VALVE
- LN₂ FLOW MEASUREMENT
- ALARM SYSTEM
- ...

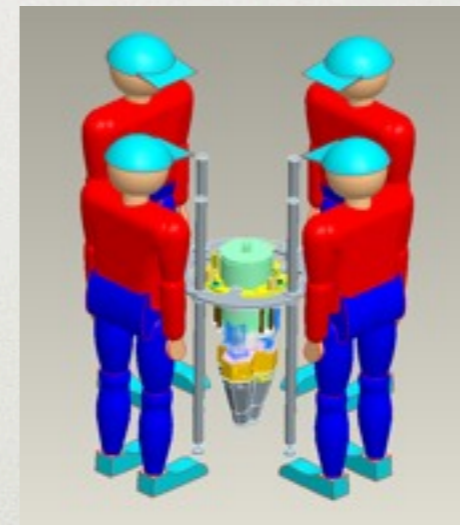
DETECTOR MOUNTING AND MOVING TOOLS



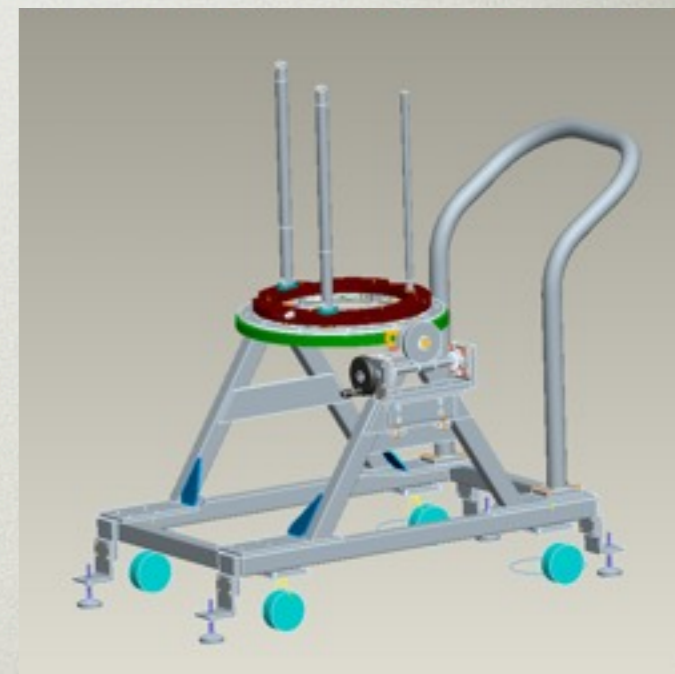
DETECTOR GAUGE



TABLE TOP FRAME



TRANSPORT FRAME



MOUNTING THE ATC

DIFFICULT TASK
ALREADY WITH ONE
DETECTOR



NEW USER'S MANUAL
"PROCEDURE FOR
INSTALLING A DETECTOR
IN THE ARRAY"
(BY JOHN STRACHAN)



NEW MOUNTING TOOLS ARE STILL NEEDED