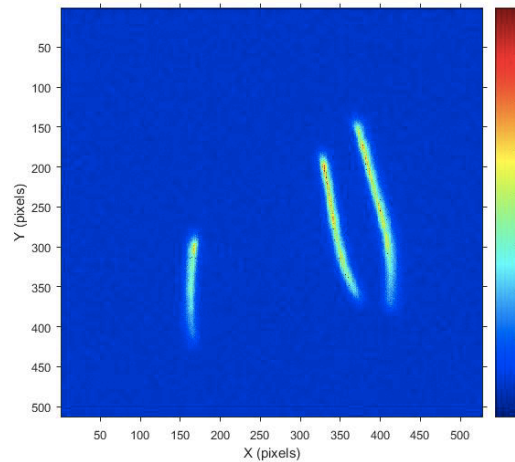


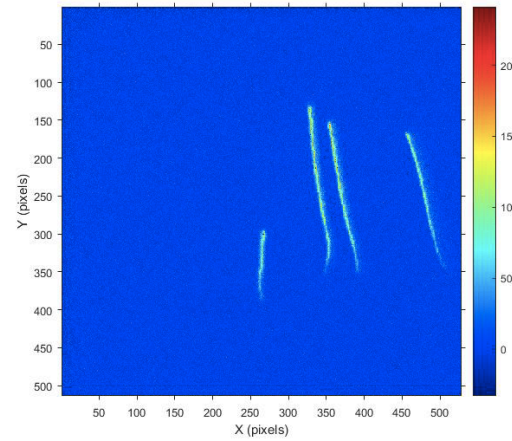
Optical Readout in NI gases

- Our CCD results for CF₄ + CS₂: triple thin GEMs with G~100K-200K

Alphas

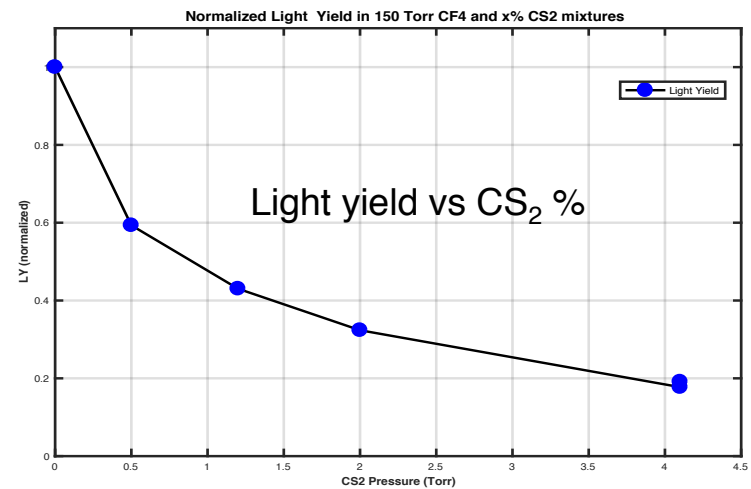
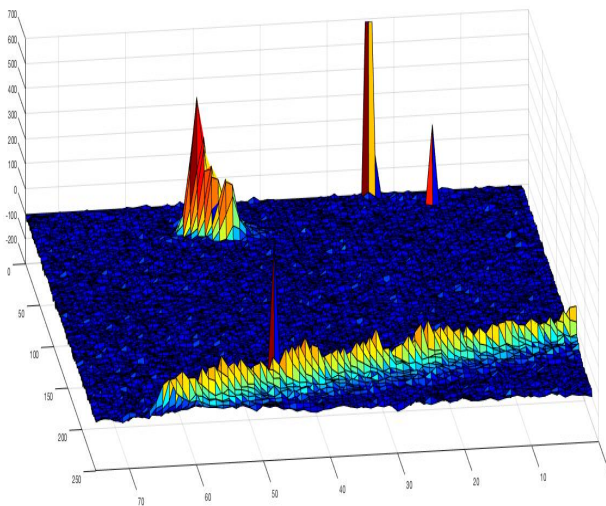


150 Torr CF₄, $\sigma \sim 450 \text{ um}$



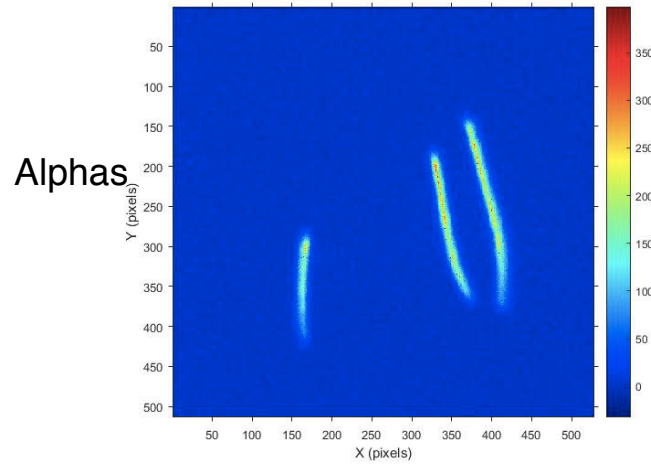
150 Torr CF₄ + 5.9 Torr CS₂, $\sigma \sim 150 \text{ um}$

F recoil, proton
and CRs in
CF₄+CS₂

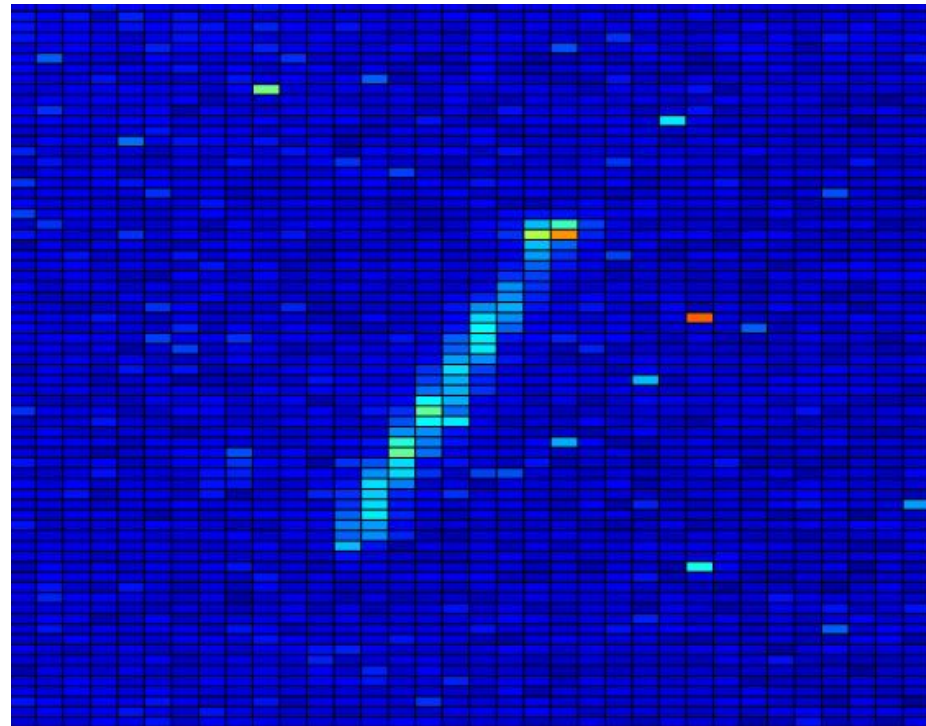


Optical Readout in NI gases

- Our CCD results for CF₄ + SF₆: 2 THGEMs, 150 Torr CF₄ + ~0.3 Torr SF₆:



150 Torr CF₄, $\sigma \sim 450 \mu\text{m}$
S/N ~ 25



150 Torr CF₄ + 0.3 Torr
SF₆, S/N ~ 5