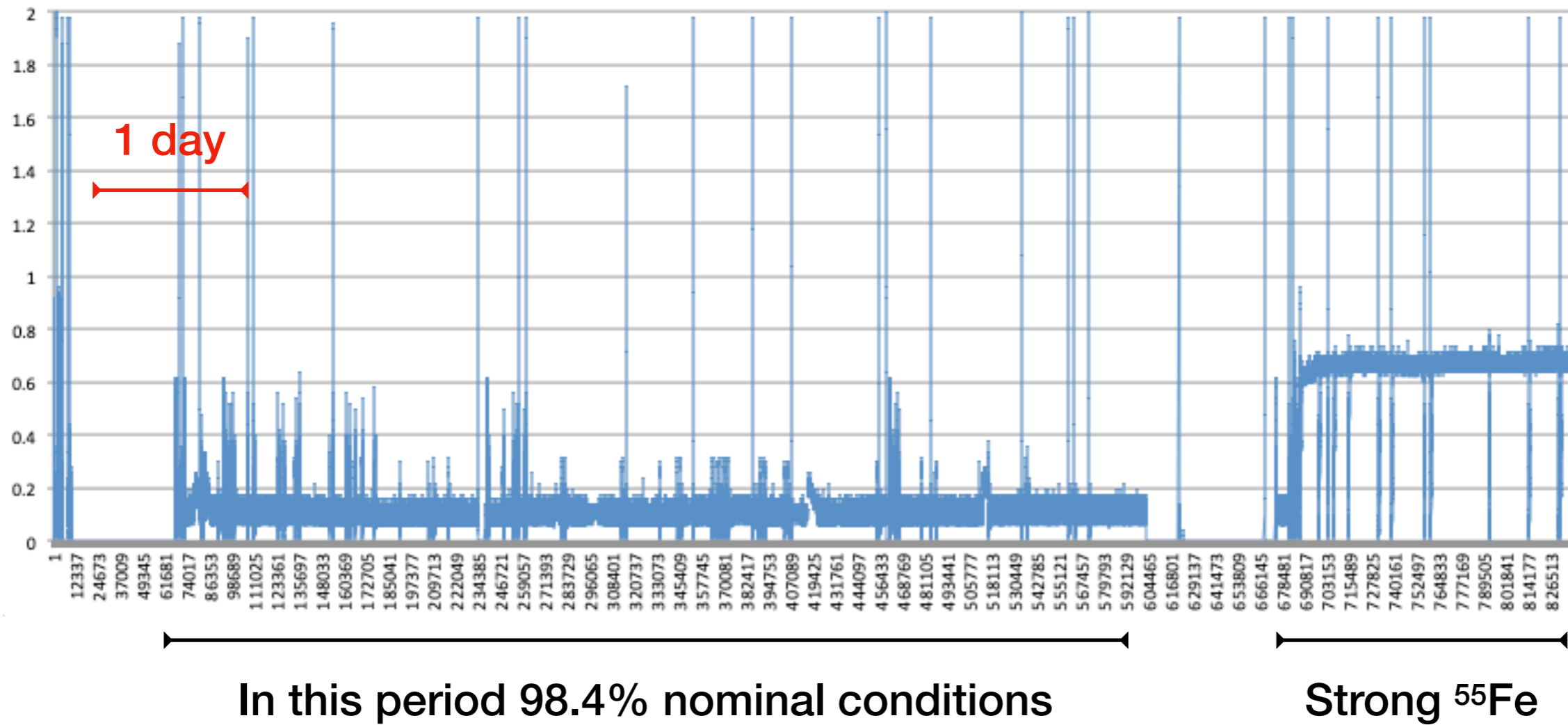
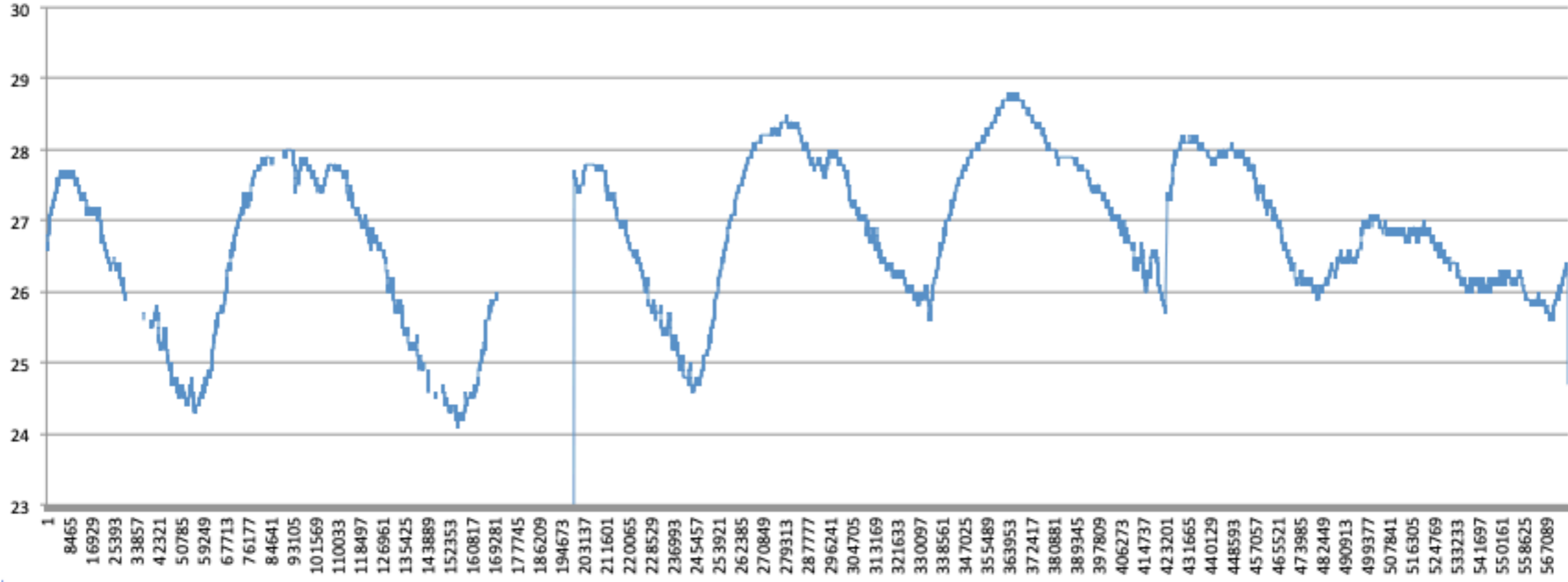


# Detector Stability: He/CF4 60/40

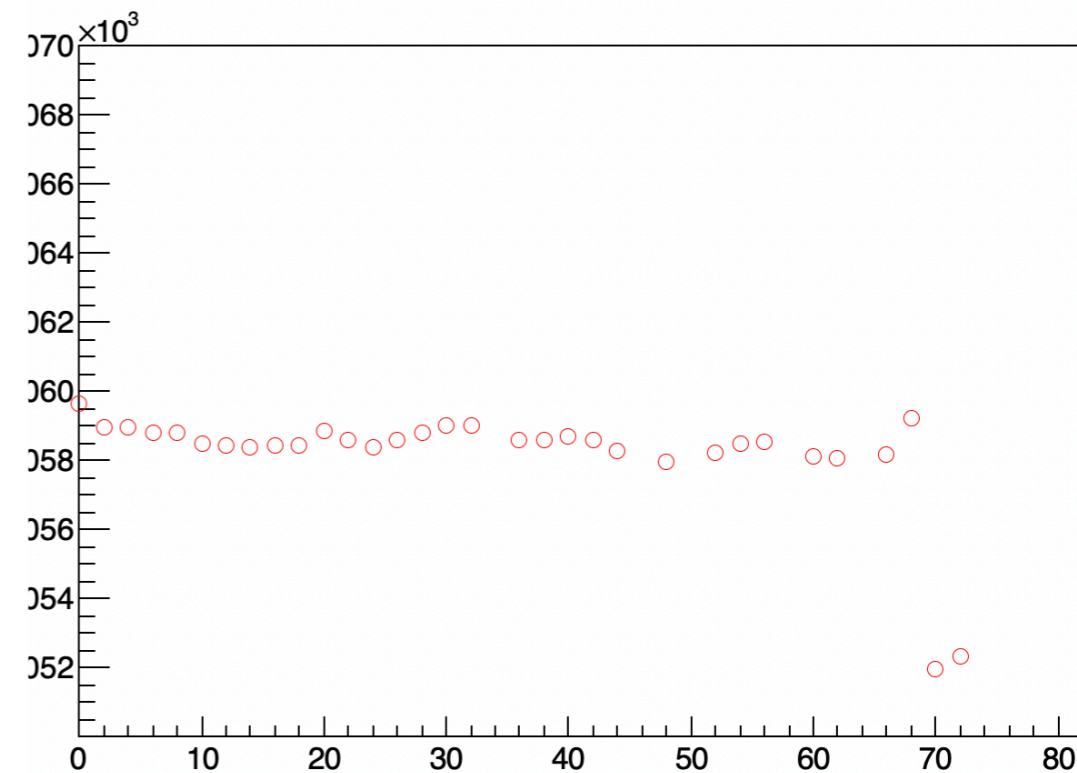
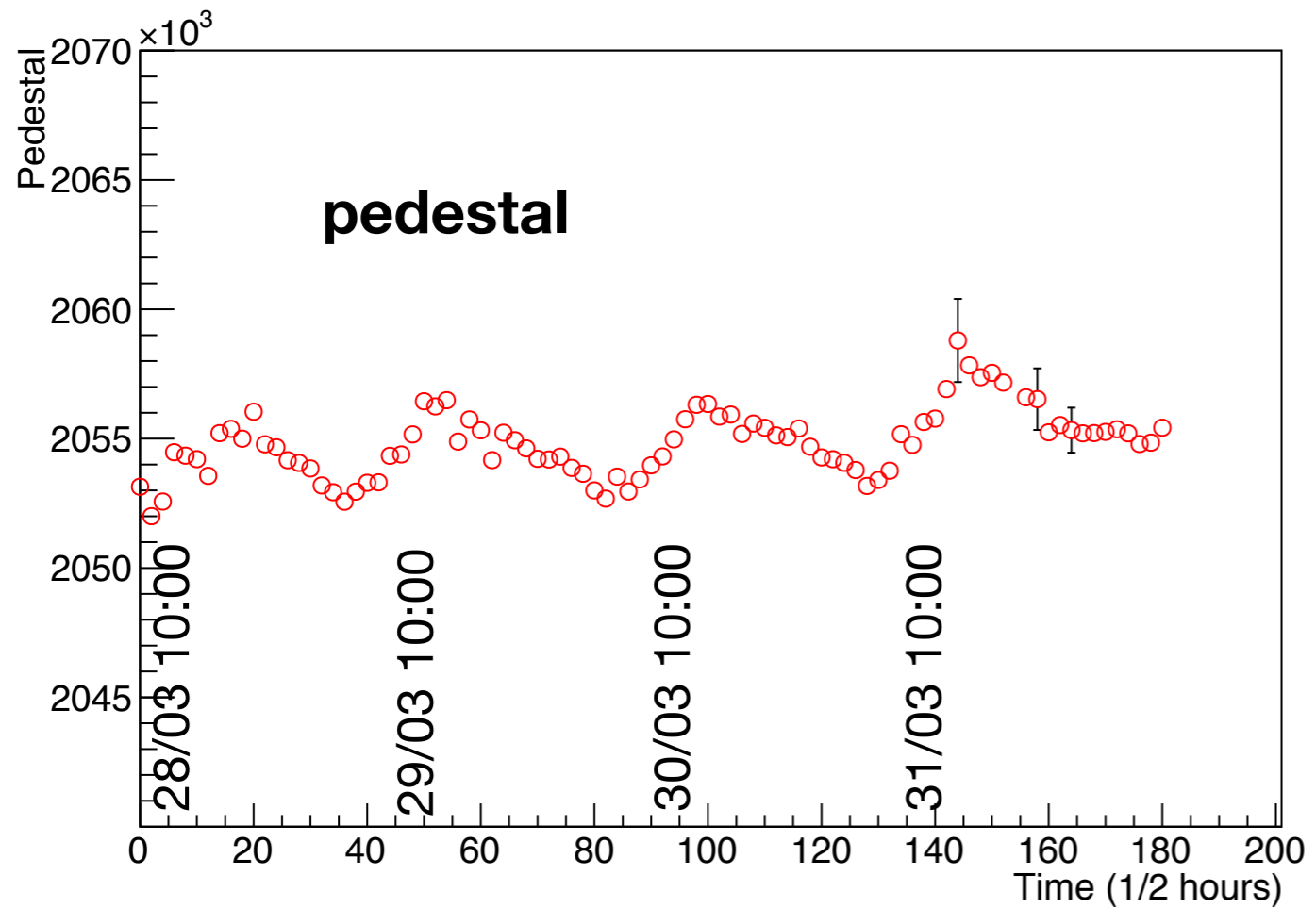
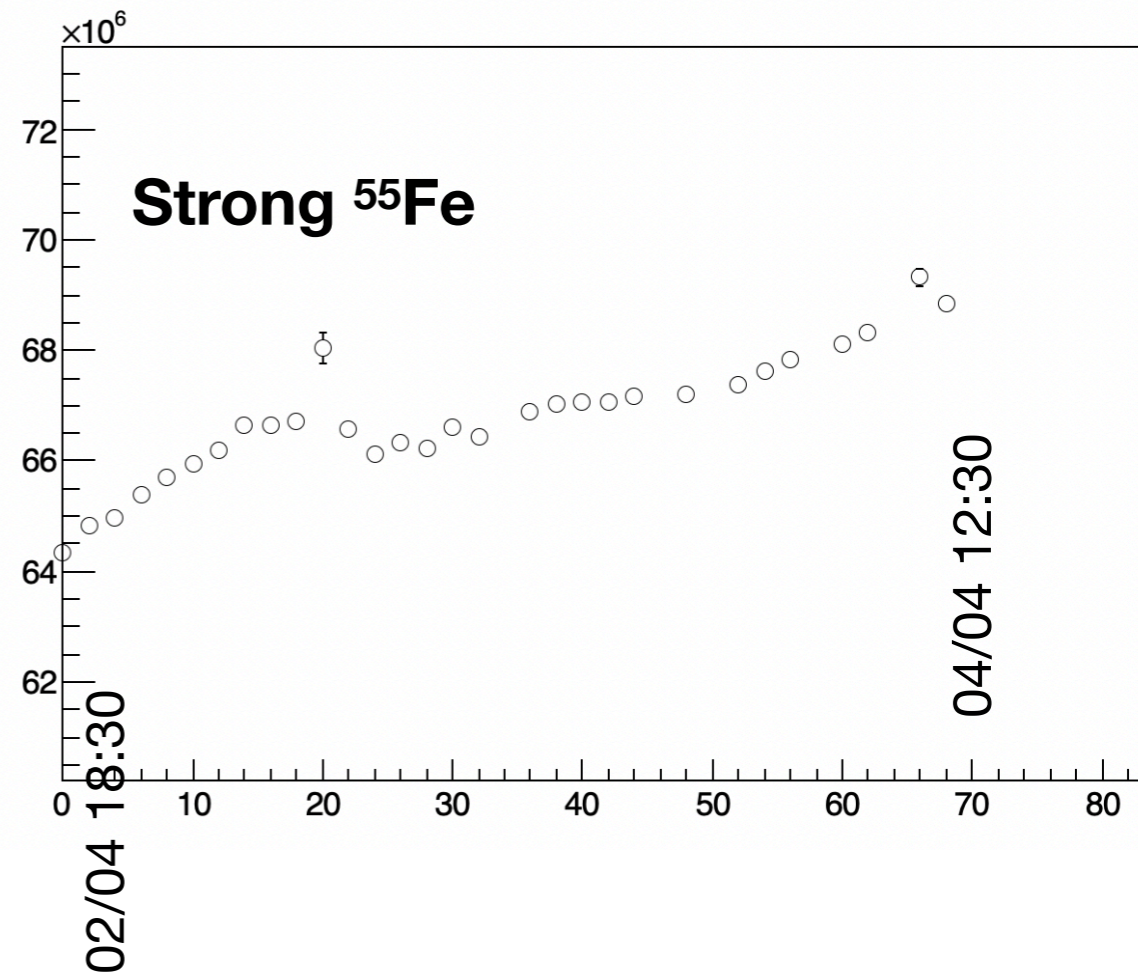
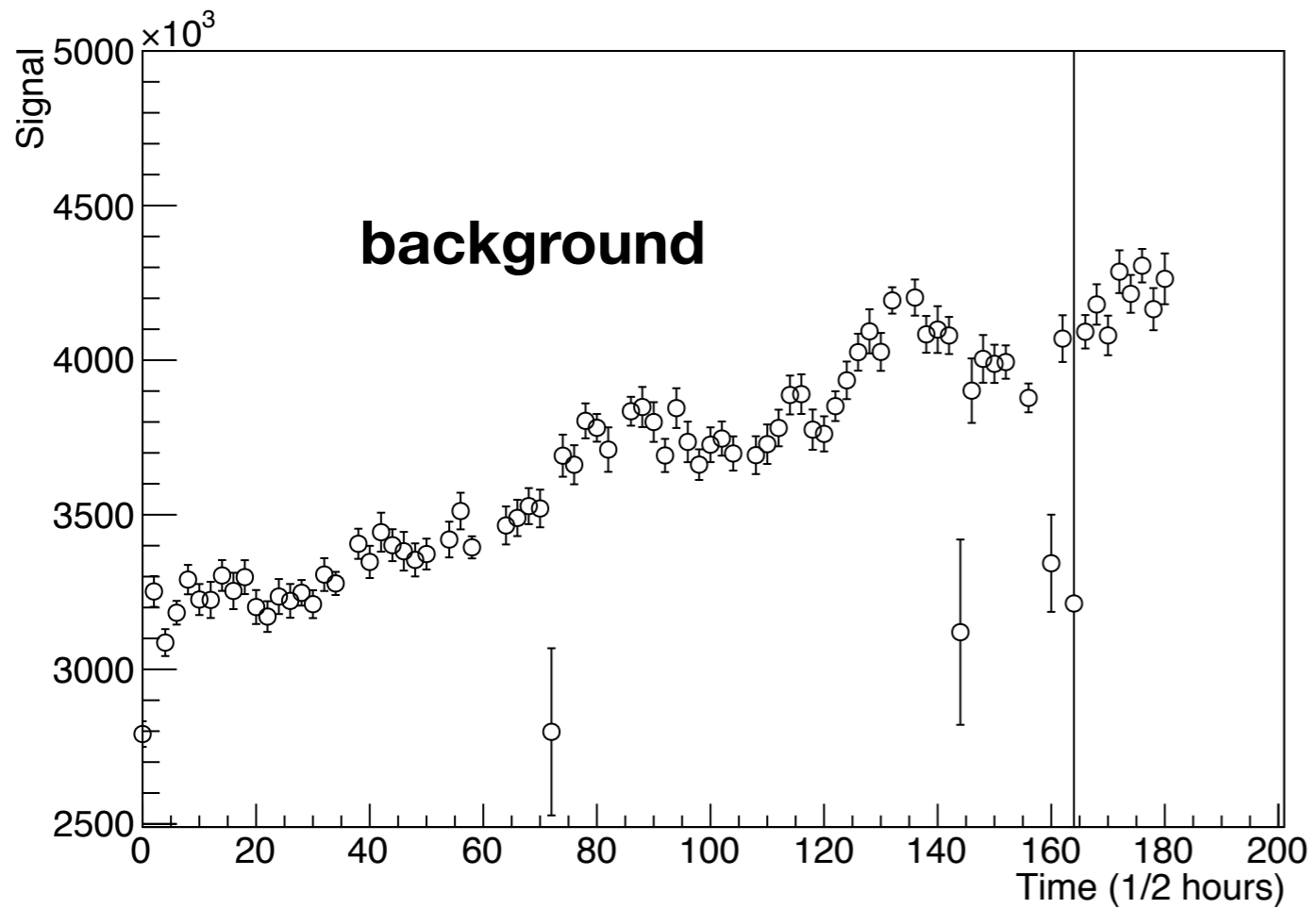


Total of 30 discharges in 8 days

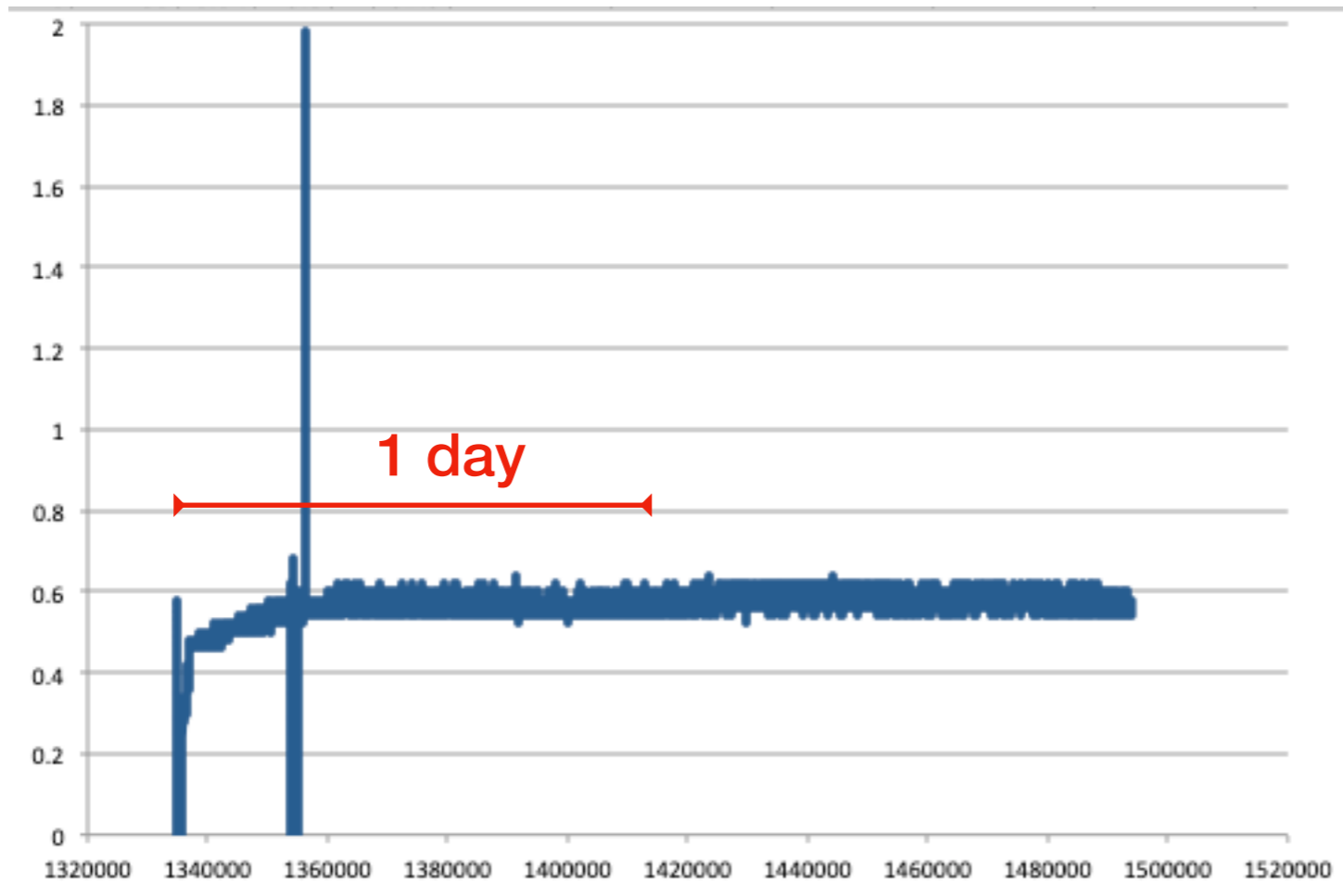


30/03 6:30

31/03 6:30



## Detector Stability: He/CF4 70/30



# Detector Stability: He/CF4 80/20

Data tacking started yesterday (Vgem=385)

Problems with currents on GEM#1

After Field Cage power cycle, now ok (Vgem=380)

The screenshot shows a control interface for a detector system. The top right window, titled 'GEM\_HV\_Lemon.vi', displays various parameters and controls:

- Edrift (V/cm):** Ch0: 500, Ch1: 2740, Ch1: 12740
- Etransff1 Set:** 2.5, **Etransff1 Mon:** 0.00, 0.5, 0.00
- Etransff2 Set:** 2.5, **Etransff2 Mon:** 380.00, 379.5, 0.40
- VGEM1 Set:** 380.0, **VGEM1 Mon:** 780.00, 780.2, 0.00
- VGEM2 Set:** 380.0, **VGEM2 Mon:** 1160.00, 1160.2, 0.00
- VGEM3 Set:** 380.0, **VGEM3 Mon:** 1660.00, 1660.2, 0.00
- VGEM4 Set:** 380.0, **VGEM4 Mon:** 2040.00, 2040.0, 0.00

The HyperTerminal window shows a log of data:

```

02754.5      12750.0
0225.90     0052.98

On          On
02755.0     12755.0
0300.00     0300.00
15100       15100
200         200
500         500
010.0      010.0
Ramp       Ramp
High       High
    
```

The Telnet window (192.168.1.20) displays a table of channel status:

| Channel Name | U0Set     | I0Set    | UMon      | IMon     | Pw  | Status  | Ch#     |
|--------------|-----------|----------|-----------|----------|-----|---------|---------|
| ---          | 0.00 U    | 0.0 uA   | 0.00 U    | 0.0 uA   | Off | 04.0004 | 04.0004 |
| ---          | 0.00 U    | 0.0 uA   | 0.25 U    | 0.0 uA   | Off | 04.0005 | 04.0005 |
| ---          | 0.00 U    | 0.0 uA   | 0.00 U    | 0.0 uA   | Off | 04.0006 | 04.0006 |
| ---          | 0.00 U    | 0.0 uA   | 0.75 U    | 0.0 uA   | Off | 04.0007 | 04.0007 |
| ---          | 0.00 U    | 0.0 uA   | 0.00 U    | 0.0 uA   | Off | 04.0008 | 04.0008 |
| ---          | 0.00 U    | 0.0 uA   | 0.00 U    | 0.0 uA   | Off | 04.0009 | 04.0009 |
| ---          | 0.00 U    | 0.0 uA   | 0.00 U    | 0.0 uA   | Off | 04.0010 | 04.0010 |
| PMT          | 1300.00 U | 800.0 uA | 1297.75 U | 393.4 uA | On  | 04.0011 | 04.0011 |
| G3D          | 0.00 U    | 2.00 uA  | 0.50 U    | 0.00 uA  | On  | 05.0000 | 05.0000 |
| G3U          | 380.00 U  | 2.00 uA  | 379.50 U  | 0.40 uA  | On  | 05.0001 | 05.0001 |
| G2D          | 780.00 U  | 2.00 uA  | 780.25 U  | 0.00 uA  | On  | 05.0002 | 05.0002 |
| ---          | 0.00 U    | 2.00 uA  | 0.75 U    | 0.00 uA  | Off | 05.0003 | 05.0003 |
| G1D          | 1660.00 U | 2.00 uA  | 1660.25 U | 0.00 uA  | On  | 05.0004 | 05.0004 |
| G1U          | 2040.00 U | 2.00 uA  | 2040.00 U | 0.04 uA  | On  | 05.0005 | 05.0005 |
| ---          | 0.00 U    | 2.00 uA  | 0.25 U    | 0.00 uA  | Off | 05.0006 | 05.0006 |
| ---          | 0.00 U    | 0.00 uA  | 0.25 U    | 0.00 uA  | Off | 05.0007 | 05.0007 |
| ---          | 0.00 U    | 2.00 uA  | 0.50 U    | 0.00 uA  | Off | 05.0008 | 05.0008 |
| ---          | 0.00 U    | 2.00 uA  | 0.25 U    | 0.00 uA  | Off | 05.0009 | 05.0009 |
| ---          | 0.00 U    | 0.00 uA  | 0.25 U    | 0.00 uA  | Off | 05.0010 | 05.0010 |
| ---          | 0.00 U    | 0.00 uA  | 0.25 U    | 0.00 uA  | Off | 05.0011 | 05.0011 |