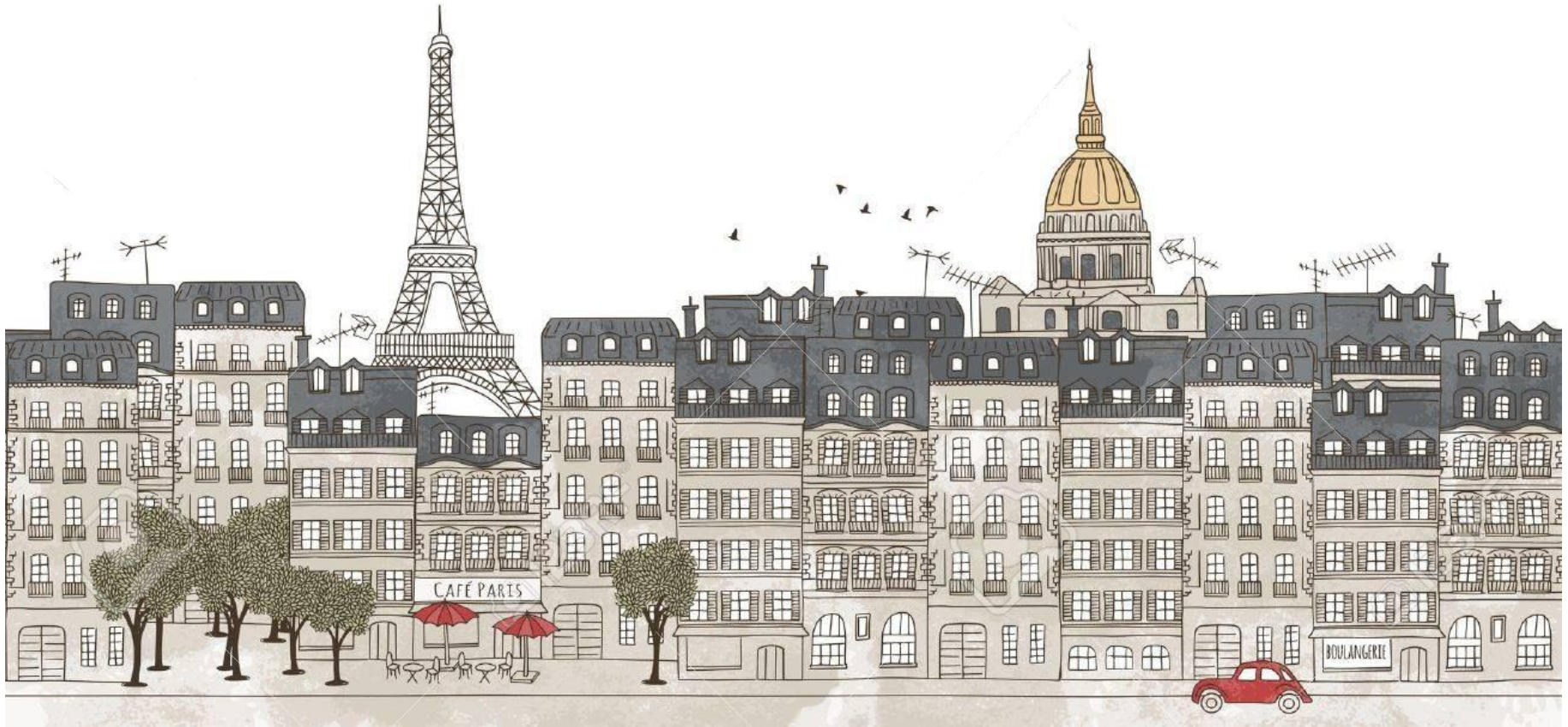


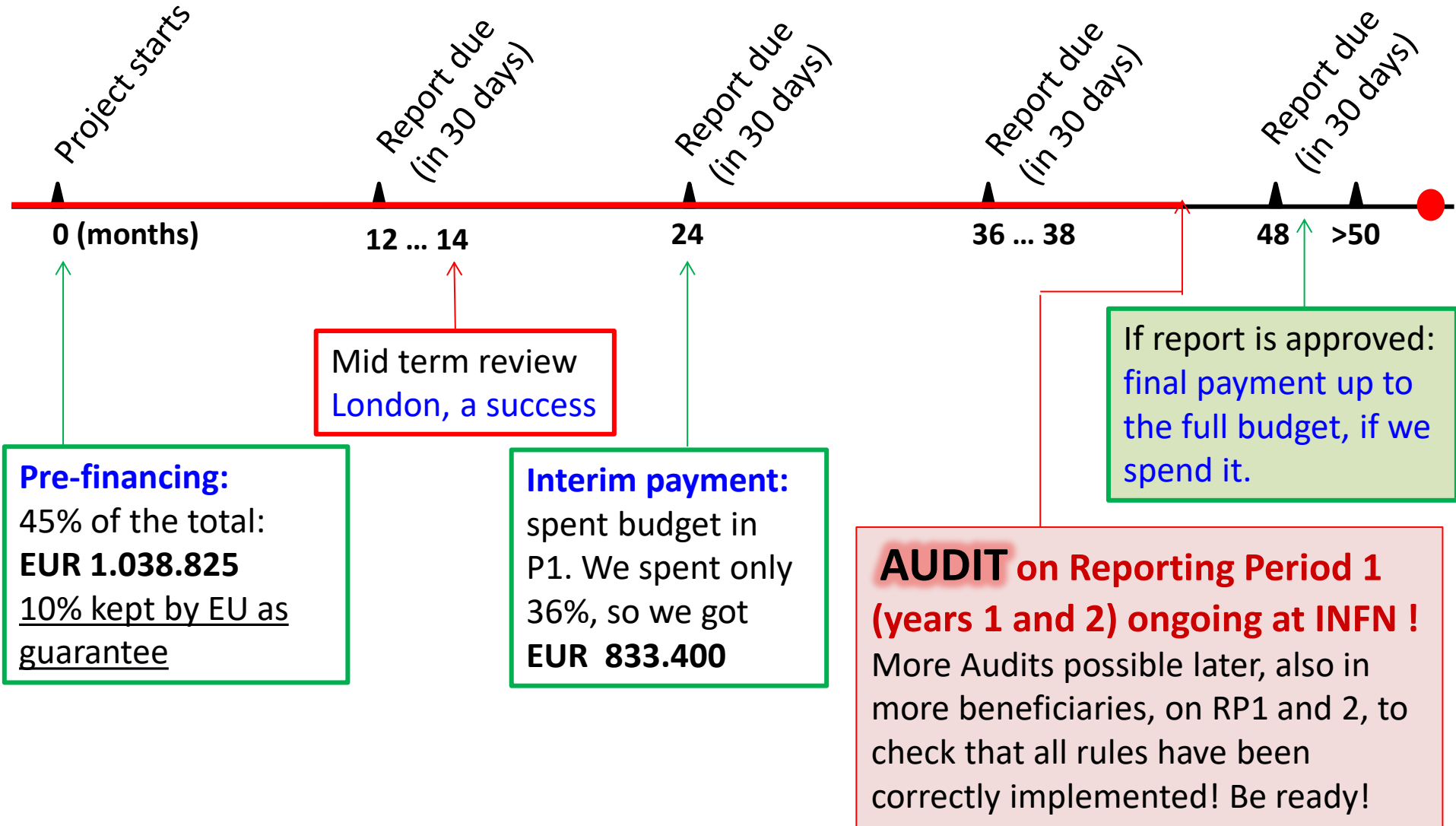
JENNIFER Project Status



LPNHE, Paris
October 30th 2018



JENNIFER evolution



Month 36 Progress Report

We submitted it in april: project generally on track.

5 deliverables, due by march 31, produced in time:

- D1.3: Belle II analysis software reference guide
- D2.6: Belle II barrel PID commissioning
- D2.7: Belle II forward PID commissioning
- D2.8: SuperKEKB lumi monitor with diamond photosensors
- D4.2: Photosensors performance study for HyperK

Secondments implementation:

- on average ok: ~ 50% of the P2 budget used in 1 year
- Many differences among beneficiaries
- Still to recuperate the fraction of unused P1 secondments

Will discuss actual status later

WP	Days total	months	planned in P2	fraction done
WP1	412	13,7	52,8	26,0%
WP2	3004	100,1	131,6	76,1%
WP3	763	25,4	62,5	40,7%
WP4	984	32,8	72,5	45,2%
WP5	37	1,2	7,7	16,0%
Grand Total	5200	173,3	327,1	53,0%



Deliverables Status

JENNIFER has to produce 25 deliverables in total:

- 13 produced and approved
- 5 produced and awaiting for approval
- 1 pending and delayed until end of project due to change of manpower (**Belle2 CDC**)
- 1 delayed to month 48 due to experiment schedule change (**Belle2 PXD+SVD**)
- 5 due by march 2019

Each deliverable has to be documented on EU Participant Portal (Documents are not supposed to be public). They are reports or outputs of the work done. Deliverable production is mandatory for project funding !



WP1

All deliverables produced !

Deliverable No	Deliverable Name	Work Package No	Lead Participant Short Name	Nature	Dissemination Level	Delivery Month
1	Offline workshop	1	HEPHY	Meeting	CO	12,24,36,48
2	Belle-II Tutorials	1	JSI	Training	CO	12,24,36,48
3	Reference guide	1	HEPHY	Document	CO	36,48
4	B2 “Yellow Report”	1	CNRS	Document	CO	24

B2TIP Report available online, but still to be printed: JENNIFER was available to contribute to the publication cost with Common Fund.



WP2

Deliverable No	Deliverable Name	Work Package No	Lead Participant Short Name	Nature	Dissemination Level	Delivery Month
5	FW ECL TDR	2	INFN	Document	CO	10
6	Commissioning Report FW ECL	2	INFN	Document	CO	48
7	CDC commissioning	2	METU	apparatus	--	14
8	PXD White-book	2	DESY	Document	CO	20
9	SVD+PXD full commissioning	2	DESY	apparatus	--	30
10	TOP commissioning	2	INFN	apparatus	--	36
11	ARICH commissioning	2	JSI	apparatus	--	36
12	Diamond sensor final	2	CNRS	apparatus	--	36

- CDC commissioning shifted to month 48
- PXD+SVD commissioning delayed to month 48 due to SperKEKB schedule
- Fw ECL commissioning changed in TDR: how to set it up?



WP3

Deliverable No	Deliverable Name	Work Package No	Lead Participant Short Name	Nature	Dissemination Level	Delivery Month
13	anti neutrino analysis report	3	INFN	Document	CO	24
14	report on the methods of MEC searches	3	NCBJ	Document	CO	48
15	combined muon and electron neutrino oscillation analysis report	3	IFAE	Document	CO	48

- **WP3 deliverables always very conservative.**
- **Written Reports must be ready by march. Published results and/or progress reports**



Deliverables WP4

Deliverable No	Deliverable Name	Work Package No	Lead Participant Short Name	Nature	Dissemination Level	Delivery Month
16	Updated sensitivity studies for Hyper-K using a new WC detector around 2km	4	QMUL	Document	CO	24
17	Photosensors performance study	4	INFN	Document	CO	36
18	Simulation with gas properties	4	CEA	Document	CO	48
19	Beam target design for 750kW operations	4	RAL	Document	CO	48

Status will be presented today.

If possible refer to conference proceedings or technical notes.



WP5

All deliverables produced !

Deliverable No	Deliverable Name	Work Package No	Lead Participant Short Name	Nature	Dissemination Level	Delivery Month
20	EC appointment	5	ALL	Management	--	1
21	Secondments' DB	5	INFN	Web application	--	3
22	Project yearly meeting	5	ALL	Meeting	CO	12,24,36,48
23	Yearly outreach event	5	ALL	Event	PU	12,24,36,48
24	Degree student institute	5	ALL	Training	CO	12,24,36,48
25	Masterclasses Exercises	5	ALL	Dissemination	PU	24

- **Another successful summer school organized this year (will be reported today)**
- **Masterclasses are starting in Belle II, still using Belle data. Support from CF available if needed. Neutrino masterclasses actively discussed in IPPOG: we should contribute (also JENNIFER2)**
- **We are a bit loose in outreach events: should have done more. Still room for some, but time is very short.**



Common Fund Status

Original amount (6.424 % of the budget)	€ 148 300
Spent in 2015 (JGM, website, B2TiP NuPhys)	€ 35 157
Spent in 2016 (JGM, School, B2TiP)	€ 35 187
Spent in 2017 (JGM@KEK, NuPhys	€ 8 224
School 2018	€ 25 000
Estimate JGM in Paris	€ 18 000
Masterclass support, website maintenance, B2 phys wshop	€ 4 000
Still Available	€ 22 200

More details in CC meeting tomorrow. Should discuss how to use it.

Either sharing it now, or invest it into few events.

**Secondments
implemented in Period 1
(months 1-24)**

WP	Days total	months	planned in 4 years	fraction done
WP1	407	13,6	65	20,9%
WP2	2835	94,5	227	41,6%
WP3	1559	52,0	113	46,0%
WP4	677	22,6	98	23,0%
WP5	66	2,2	10	22,0%
Grand Total	5544	184,8	513,0	36,0%

**Period 2
Secondments
Status**

We still should use 79
months !

WP	Days total	months	planned in P2	fraction done
WP1	759	25,3	52,8	47,9%
WP2	4226	140,9	131,6	107,0%
WP3	822	27,4	62,5	43,8%
WP4	1424	47,5	72,5	65,5%
WP5	210	7,0	7,7	90,9%
Grand Total	7441	248,0	327,1	75,8%



Secondments per Beneficiary @29 oct 2018

Based on request
of declarations
to JENNIFER
secretariat

Several groups
far from target

Istitution	Days total	months	planned in P2	fraction done	missing days
INFN	2268	75,6	87,9	86,0%	369
DESY	1995	66,5	84,6	78,6%	543
OEAW-HEPHY	806	26,9	20,6	130,4%	-188
IFJ-PAN	122	4,1	4,9	83,0%	25
UKP	151	5,0	6,4	78,6%	41
JSI	433	14,4	7,5	192,4%	-208
METU	213	7,1	14	50,7%	207
LAL-CNRS	33	1,1	2,2	50,0%	33
CEA	211	7,0	16,5	42,6%	284
IFAE	181	6,0	16,5	36,6%	314
NCBJ	276	9,2	9,97	92,3%	23,1
QMUL	346	11,5	27,25	42,3%	471,5
STFC-RAL	383	12,8	25,75	49,6%	389,5
CAEN	14	0,5	3	15,6%	76
Total	7432	247,7	327,1	75,7%	



Secondment compensations

PO strongly suggests us to use the WHOLE BUDGET. REA does not like to get back money.

To this aim, motivated compensations between beneficiaries are possible and encouraged, but they should be proposed to PO and approved. Here an example:

Institution	fraction done	missing days	Status update and corrective actions agreed	corrective action
JSI	192.4%	-208	WP activities required longer stays.	Will receive 6 months from IFAE
LAL-CNRS	50.0%	33	Need more travels to complete WP2 activity.	Will receive 6 months from CEA
CEA	41.4%	290	HyperK experiment going slower than expected.	Will move 6 months to CNRS
IFAE	36.6%	314	HyperK experiment going slower than expected.	Will move 6 months to JSI

Other similar operations can be done quickly !

Our new PO , **Amanda-Jane Ozin Hofsaess**, is very helpful



Updated table after compensation

Istitution	Days total	months	planned in P2	fraction done	missing days	
INFN	2268	75,6	87,9	86,0%	369	<i>Mostly T2K</i>
DESY	1995	66,5	84,6	78,6%	543	<i>Installation next monhs</i>
OEAW-HEPHY	806	26,9	20,6	130,4%	-188	<i>May get from others</i>
IFJ-PAN	122	4,1	4,9	83,0%	25	
UKP	151	5,0	6,4	78,6%	41	
JSI	433	14,4	13,5	106,9%	-28	
METU	213	7,1	14	50,7%	207	<i>Will give 3-4 months</i>
LAL-CNRS	33	1,1	8,2	13,4%	213	
CEA	211	7,0	10,5	67,0%	104	
IFAE	181	6,0	10,5	57,5%	134	
NCBJ	276	9,2	9,97	92,3%	23,1	
QMUL	346	11,5	27,25	42,3%	471,5	<i>Do you manage?</i>
STFC-RAL	383	12,8	25,75	49,6%	389,5	<i>Do you manage?</i>
CAEN	14	0,5	3	15,6%	76	<i>Will give 1 month</i>
Total	7432	247,7	327,1	75,7%		



More Comments on Secondments

It is now very important that each group leader make a real plan of secondments implementation until end of march !!!

- **Secondment compensations among different people (already included in JENNIFER) in a single beneficiary are possible.**
- **Secondment compensation among different WPs in a single beneficiary are also possible. Better to declare them to PO, but can be motivated also in the final report by need of the project activities. Do not worry**
- **IF you now estimate that your group will not manage to use all secondments, PLEASE make the exceeding months available for the rest of the project. We will try to arrange compensations with beneficiaries where more people can travel.**



What we are learning from AUDIT

Auditors will visit us in the week 19-23 november and will check Reporting Period 1

They asked us to prepare documentation of each travel: tickets, payments, secondments documentation.

We have to prove:

- **Eligibility of the researcher: CV (signed original), job contract**
- **Payments done to researcher: official payment notes**
- **Secondment really done: tickets, KEK declaration, activity report (signed original)**

An item we did not at all considered up to now is the obligation to guarantee that the seconded person has a **sanitary insurance in the receiving country**! Luckily in some cases it is so, but not always. Please check this point with your administrations.

Another delicate point is the project Common Fund: we do not have a signed Consortium Agreement (not mandatory), but we have all mails and slides from CC. Hope this will be sufficient. We will try sending you a new CA version for late signature (possible).

I will keep you informed!



Website

We have been hacked 1 months ago.

I quickly managed to get the site rescued by the people who designed it 3 years ago. It costed 700 euros.

We should make the website in the condition of staying online for several years to document our work. It should then be reshuffled and updated. This will cost about 200 euros.

We should clearly check it and include all infos, also names of people having responsibilities, events supported, deliverables.....



Publications

It is extremely important to prove to EU our production of scientific communications, i.e. articles and talks.

We are still quite loose on this point.

- **All collaborations papers must be listed on the Participant Portal**
- **We should check that JENNIFER is mentioned in the acknowledgement section.**
- **Also all conference proceedings regarding JENNIFER activity, which have been presented by one of our seconded colleagues, must also be listed on the participant portal: please do inform jennifer-secretariat.**



Gender Balance

Institute	Male total	Female total	Male researchers	Female researchers	Male other	Female other
INFN	45	12	36	12	9	0
CAEN	1	0	0	0	1	0
CEA	5	2	5	2	0	0
DESY	9	0	4	0	5	0
IFAE	3	1	3	1	0	0
IFJ	3	0	3	0	0	0
JSI	6	2	4	2	1	0
LAL-CNRS	4	3	2	3	2	0
NCBJ	4	7	4	7	0	0
HEPHY	4	0	2	0	2	0
QMUL	7	4	7	4	0	0
STFC-RAL	10	3	8	3	0	0
UKP	3	0	3	0	0	0
Tot	104	34	81	34	20	0
	75,4%	24,6%				

However, only 1 woman (out of 6) in executive commettee, and only 4 in Council (out of 14)



Conclusions

JENNIFER is getting to its end with a number of scientific achievements. Few points to be revised/clarified.

We have to do our best to use as much as possible the budget available

Common fund about 20 k€ still to be managed

First AUDIT started: let's be prepared from administrative point of view. And cross fingers.

