

- **PERSONALE AFFERENTE**
- **COMPETENZE**
- **ATTREZZATURE**
- **ATTIVITA'**

➤ PERSONALE AFFERENTE

- | | |
|----------------------|------------|
| 1. Maurizio D'Andrea | CTER |
| 2. Nunzio Guardone | Università |
| 3. Filippo Fichera | CTER |
| 4. Gaspare Saccà | CTER |

3 + 1

➤ PERSONALE AFFERENTE



➤ **COMPETENZE**

1. **Progettazione di sistemi Elettronici analogici e digitali con componentistica commerciale**
2. **Sviluppo CAD circuiti stampati**
3. **Realizzazione prototipi PCB ed assemblaggio manuale anche SMT**
4. **Ingegnerizzazione medie produzioni**
5. **Installazione di apparati complessi**

➤ **ATTREZZATURE**

1. **CAD Elettronico utilizzato:**

CIRCUIT DESIGN SUITE di National Instruments (LICENZA NAZIONALE INFN)

2. **Plotter Prototipi PCB:**

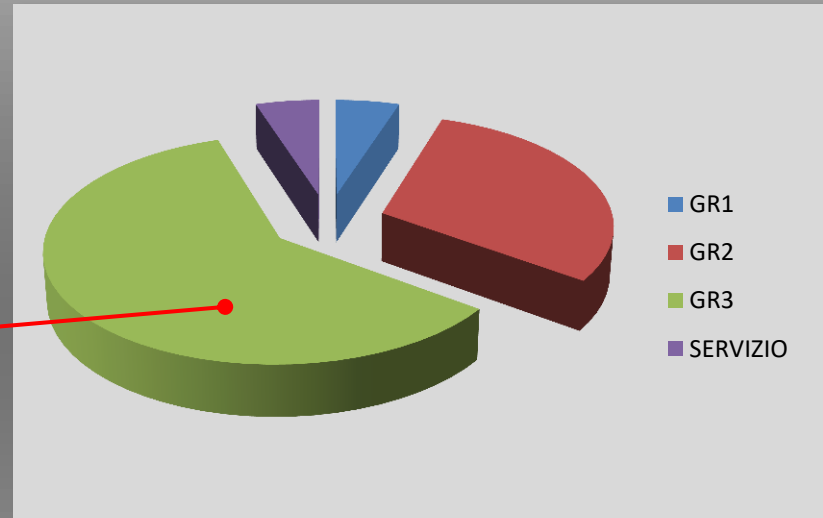
PROTOMAT 93s (1999) – doppia faccia con metallizzazione manuale in post produzione

3. **Oscilloscopi:**

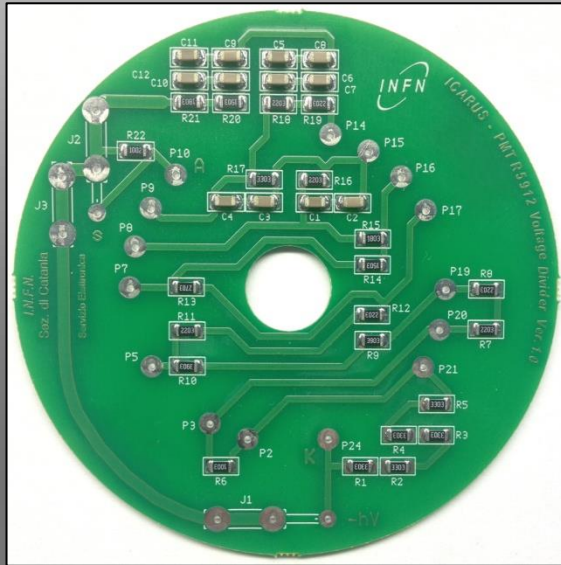
LeCroy ad alte prestazioni

➤ ATTIVITA'

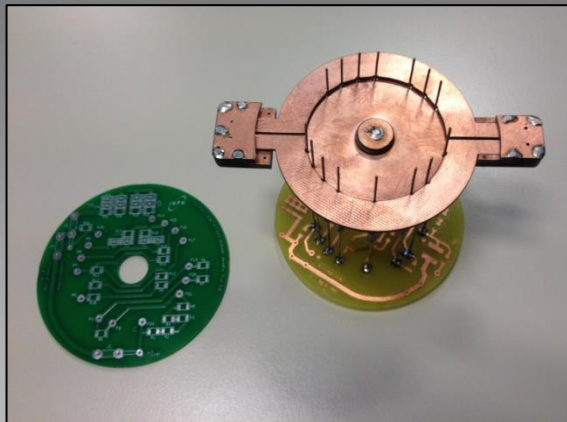
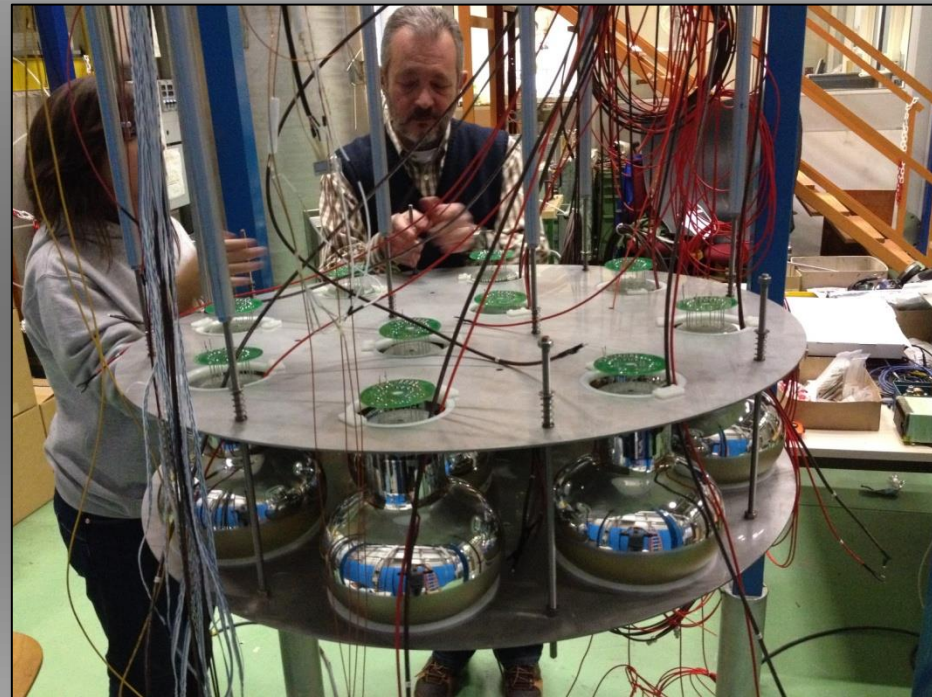
GR1	5%
GR2	30%:
GR3	60%
SERVIZIO	5%



➤ GR2 ICARUS



Base passiva del fototubo

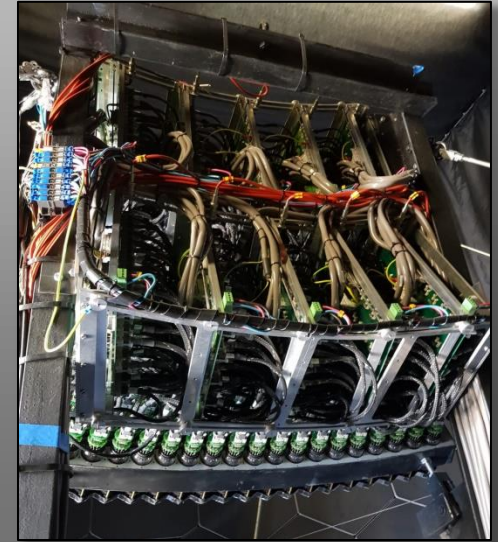
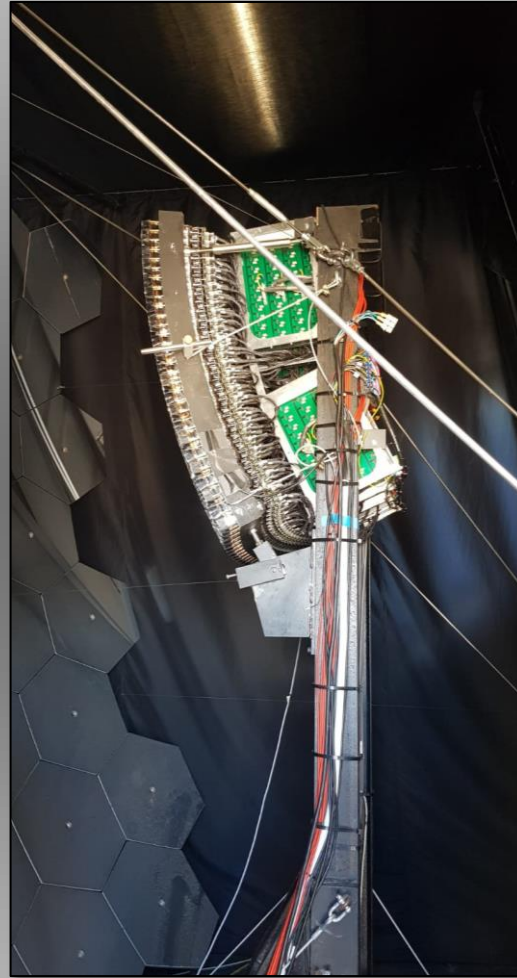
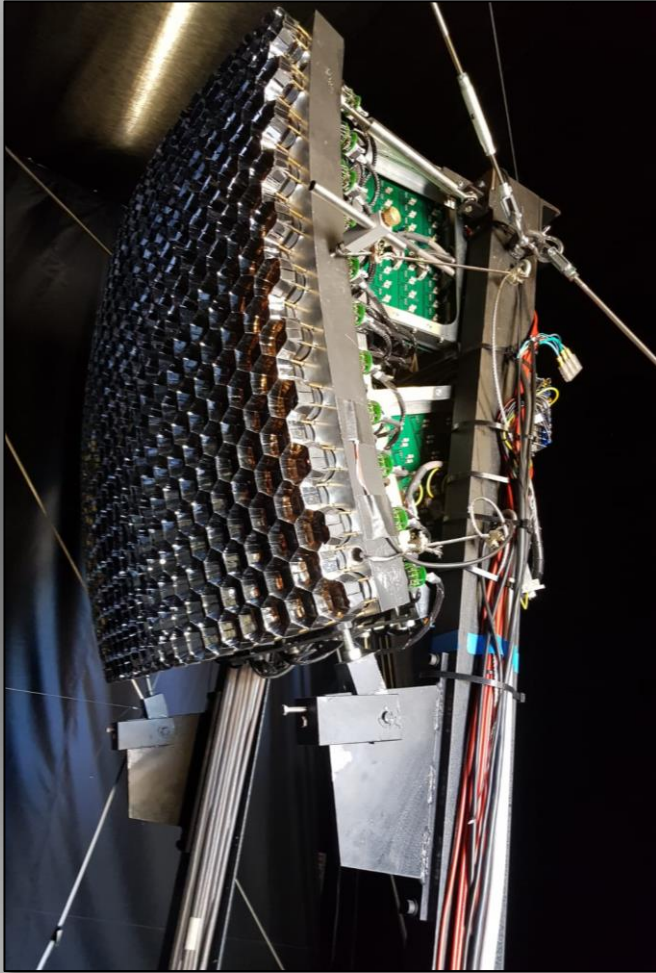


➤ GR2 AUGER

Installazione e manutenzione UPGRADE/UPDATE del sito Malargue

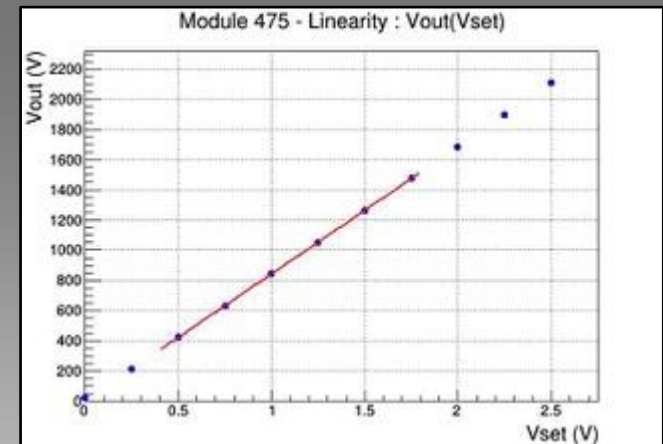
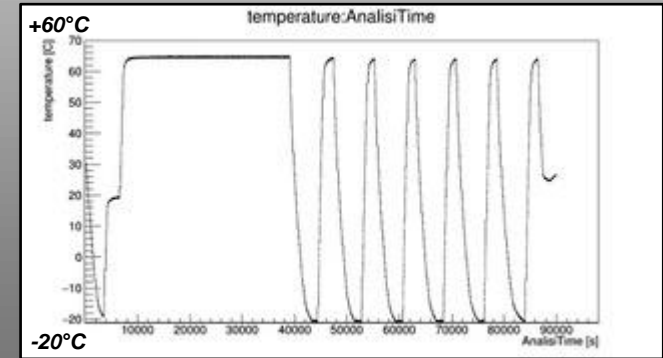
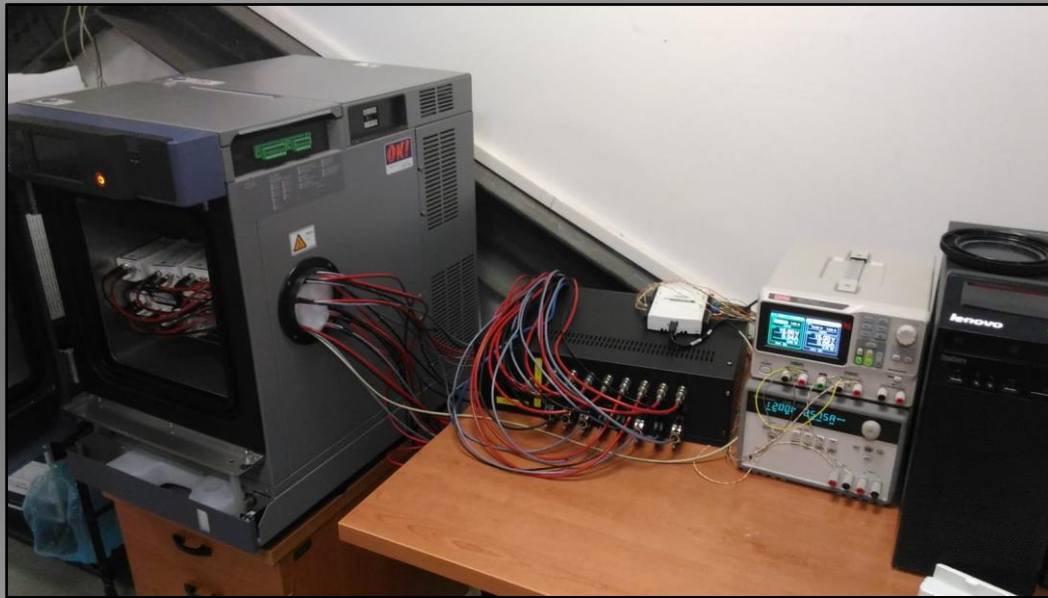


➤ GR2 AUGER



➤ GR2 AUGER

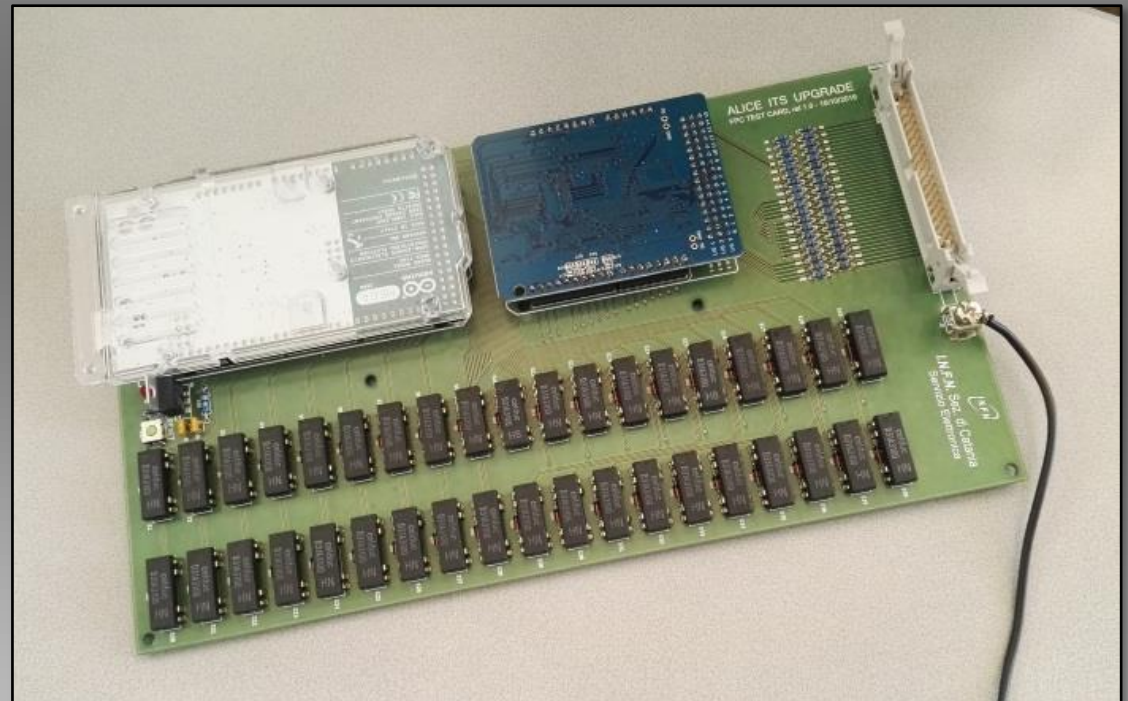
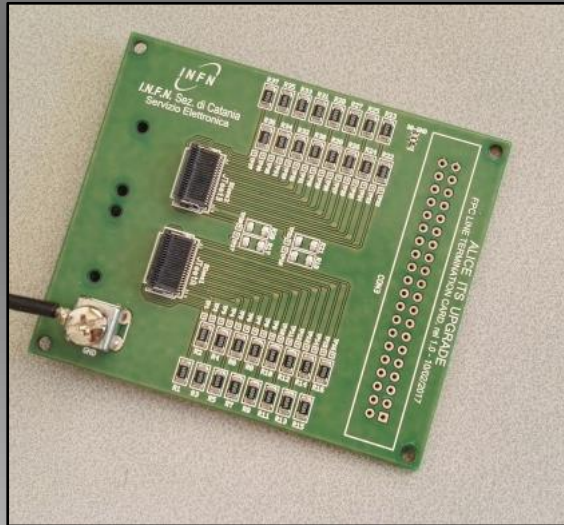
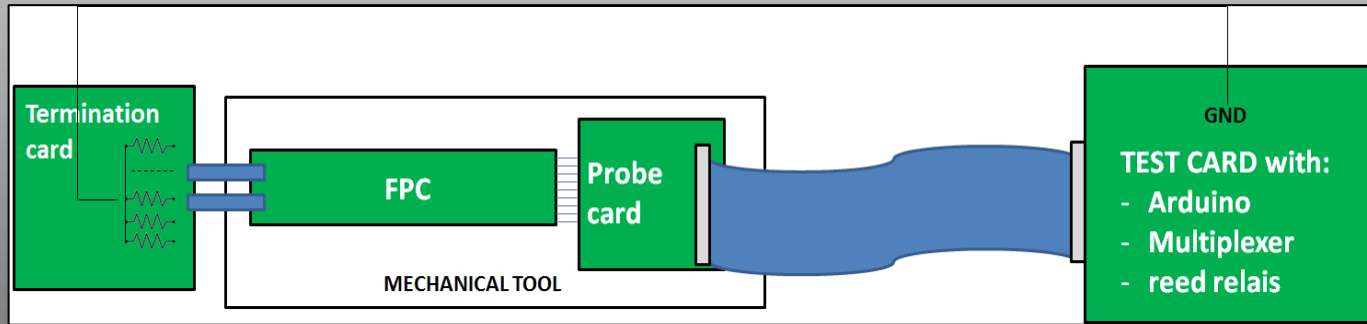
Banco di test per caratterizzazione ambientale



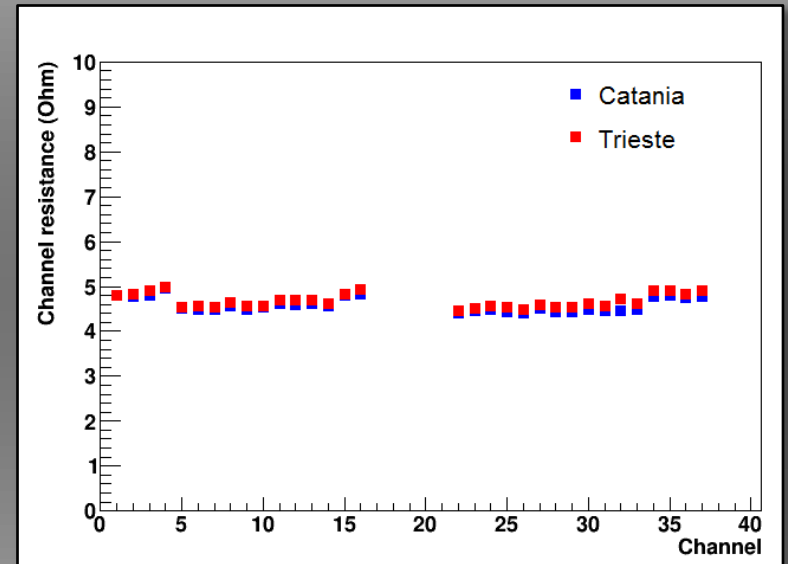
➤ GR3

ALICE

Electrical and visual characterization of FPCs



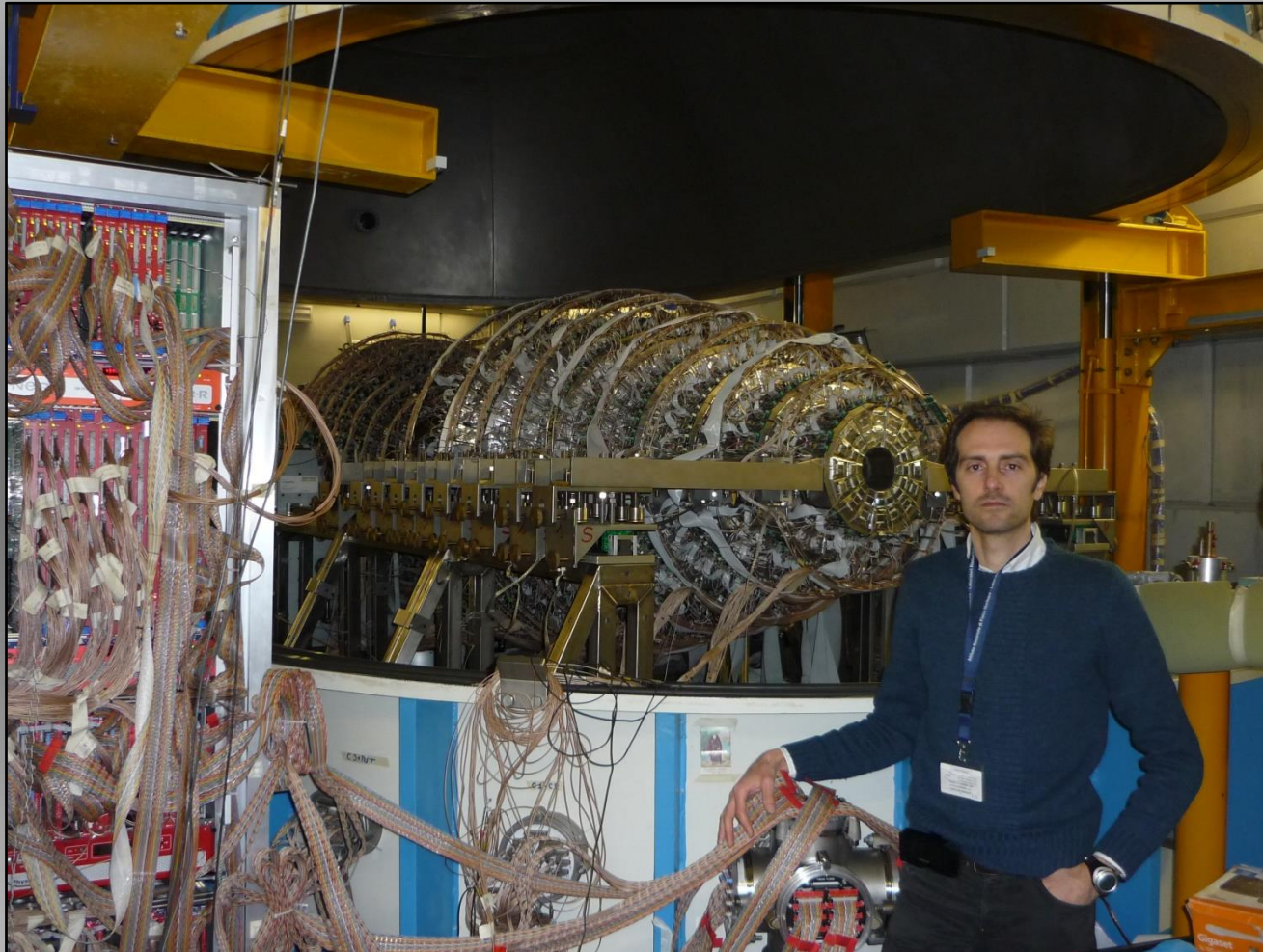
➤ GR3 ALICE



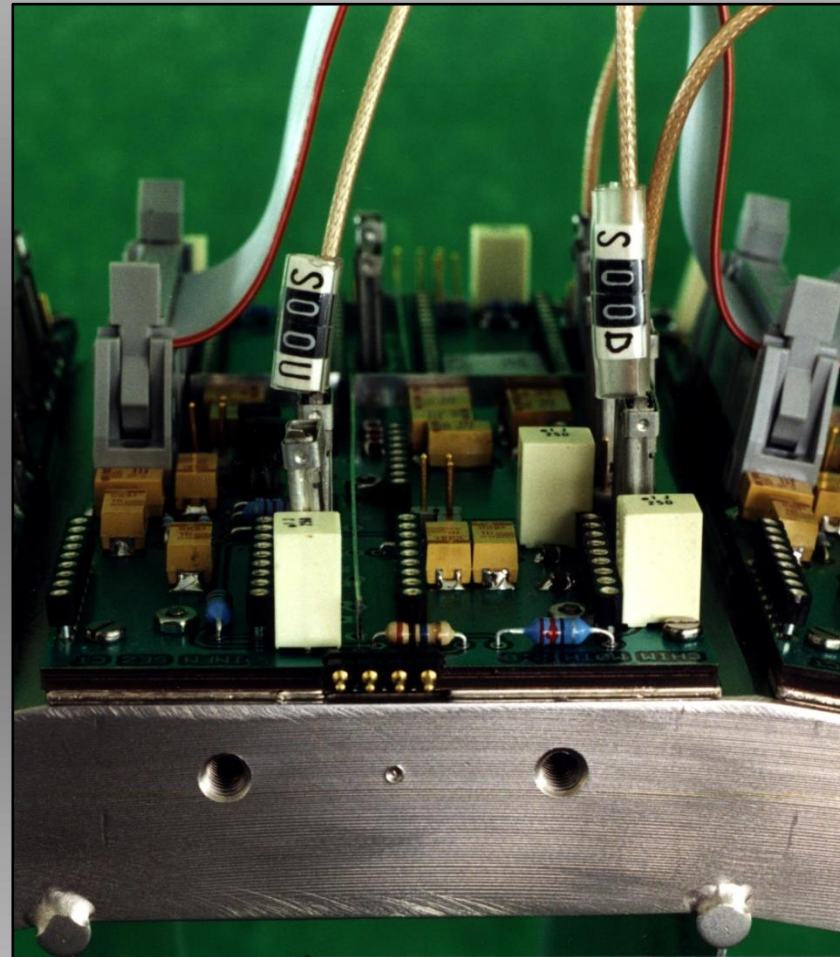
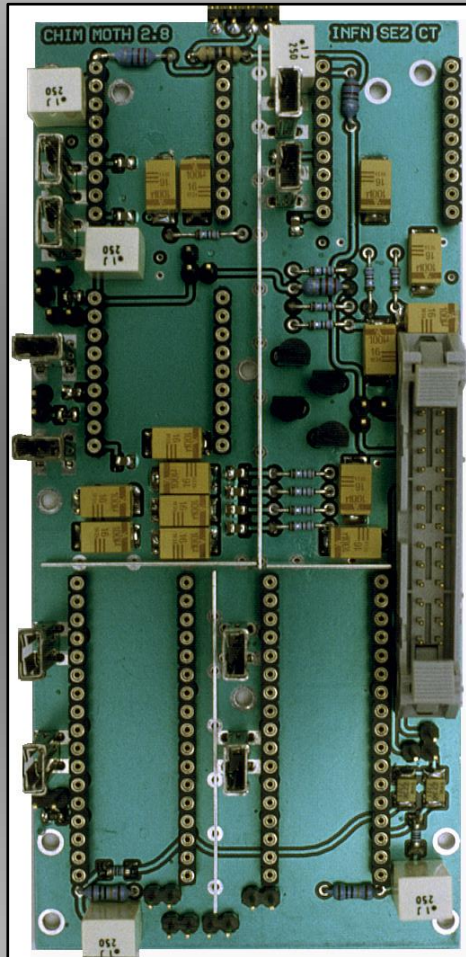
➤ GR3

CHIMERA (LNS)

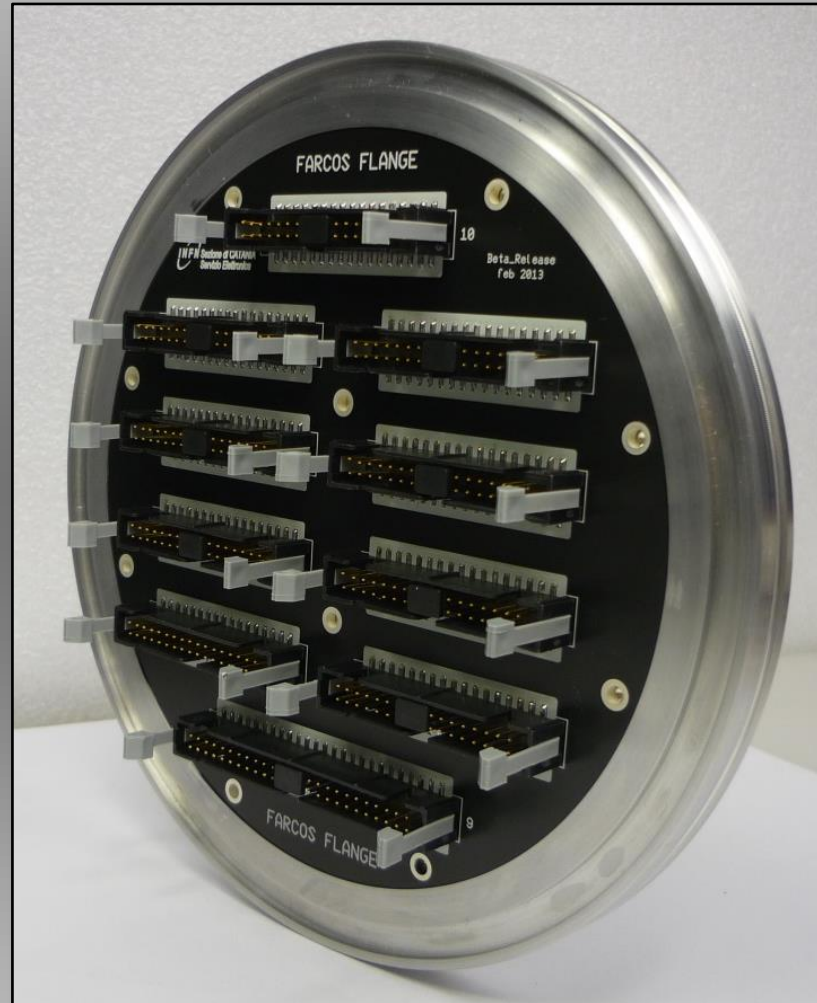
CHIMERA



➤ GR3 CHIMERA (LNS)

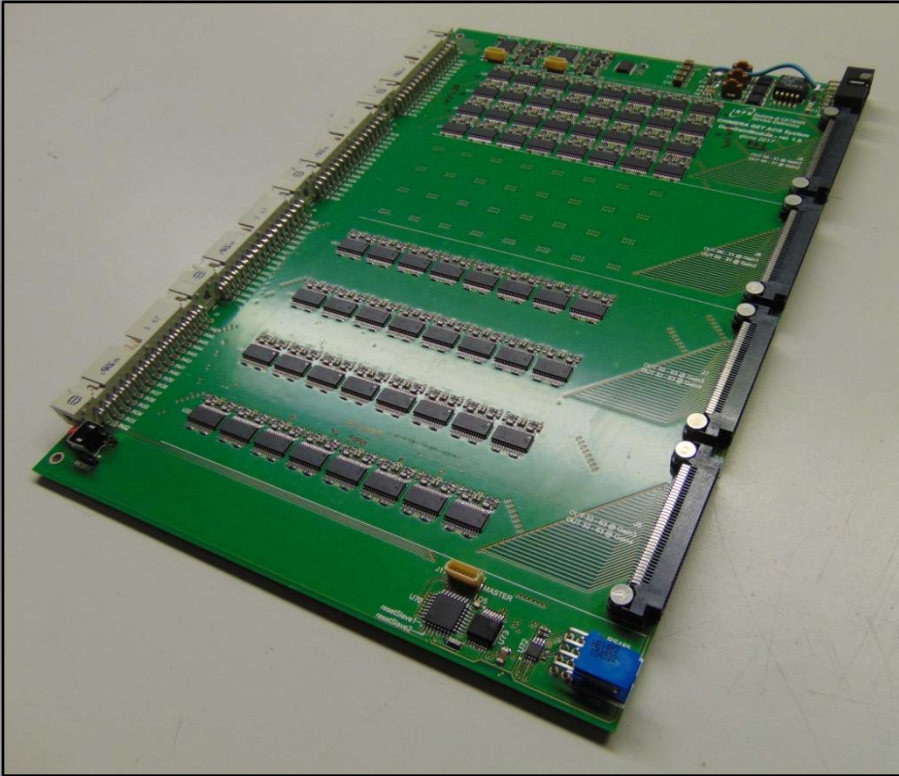


➤ GR3 CHIMERA (LNS)



➤ GR3 CHIMERA (LNS)

Dual Gain Module



6 Layers – 0603 SMD technology

64 + 64 canali

Gain

Programmabili da remoto
a gruppi di 32 ch

Offset

Clamping voltage

Affidata a ditta esterna realizzazione di 30 schede
con gara MEPA
trasformata poi in gara fuori MEPA